

TURMEC

WORLD LEADERS IN RECYCLING SOLUTIONS



GET IN TOUCH TODAY TO SEE HOW
WE CAN HELP YOU ACHIEVE YOUR
RECYCLING GOALS!

WWW.TURMEC.COM



TURMEC IS A WORLD LEADER IN RECYCLING SOLUTIONS, WITH OVER 45 YEARS OF EXPERIENCE IN THE ENGINEERING AND WASTE INDUSTRIES.

Turmec is constantly evolving to move with the change in the waste streams and continuously investing in developing new ways to process different materials and offering simple, cost-effective and innovative solutions, bespoke to our clients' needs.

We work with our clients to plan, design, manufacture, and install bespoke recycling facilities that are both, efficient and effective, produced to minimise labour input while extracting high-quality materials consistently, achieving maximum throughput with minimal maintenance.

Each facility features key, bespoke innovations as a result of years of experience dealing with different types of waste and that makes Turmec the plant supplier of choice to many some of the best recycling operators in Europe and Australia.



WORLD LEADERS IN RECYCLING SOLUTIONS



GET IN TOUCH TODAY TO SEE HOW WE CAN
HELP YOU ACHIEVE YOUR RECYCLING GOALS.



WWW.TURMEC.COM



CONSTRUCTION & DEMOLITION (C&D) CONSTRUCTION & INDUSTRIAL (C&I)

Sorting through the immense, mixed clutter of C&D and C&I waste requires an efficient process that maximises the recovery of these materials; with customer interaction throughout the design process, Turmec's plants are designed to meet their exact requirements, automating the sorting of one of the most challenging waste materials.



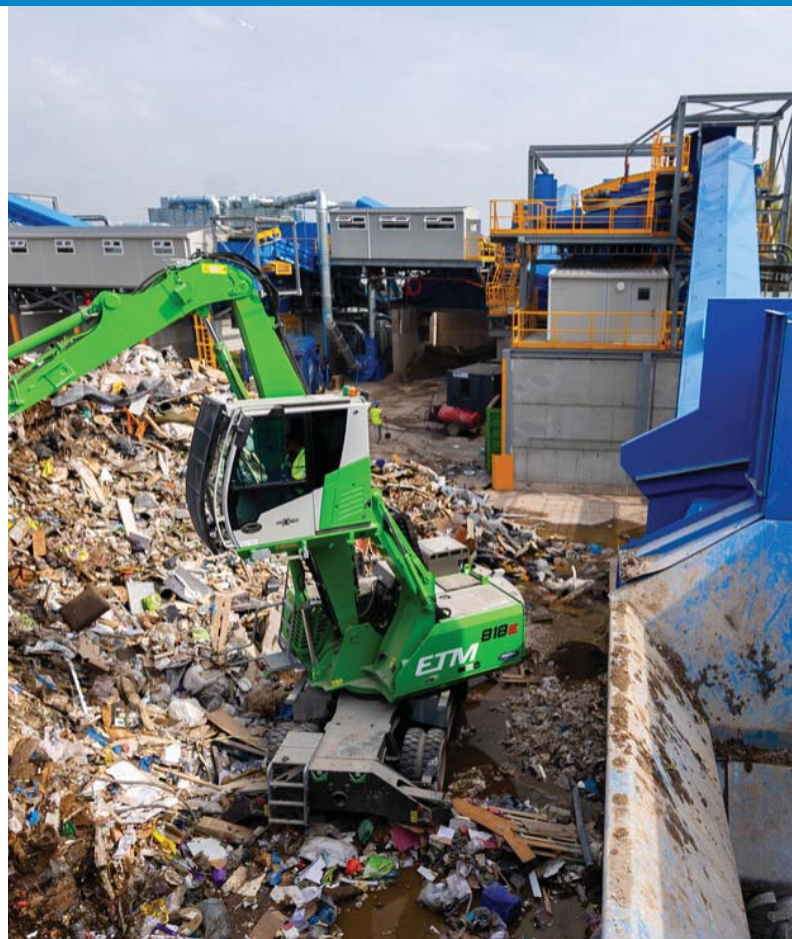
Our robust, custom-made C&D/C&I plants are designed to minimise labour input while extracting high-quality recyclables – metals, aggregates, timber, fines, etc. –, consistently achieving maximum throughput with minimal maintenance.

Each facility features key, bespoke innovations as a result of years of experience dealing with this abrasive material - and that makes Turmec the plant supplier of choice to many of the best recycling operators in Europe and Australia.

WORLD LEADERS IN RECYCLING SOLUTIONS



GET IN TOUCH TODAY TO SEE HOW WE CAN
HELP YOU ACHIEVE YOUR RECYCLING GOALS.



WWW.TURMEC.COM



MIXED DRY RECYCLABLES (MDR)

Mixed dry recyclables recovery has become increasingly popular over the last few years, with minimising landfill diversion as the main focus and Turmec leads the way with new and efficient solutions to process mixed dry recyclables at a maximum rate, with minimum cost.

Turmec is constantly evolving to move with the change in the waste streams and continuously investing in developing new ways to process waste, designing and manufacturing plants dealing with various tonnages of Mixed Dry Recyclables, and offering simple, cost-effective and innovative solutions, bespoke to our clients' needs.

Whether it is an upgrade to an existing line or a complete turnkey facility, we have the experience to accommodate all requirements and offer the most effective solution to each project. Turmec's innovative designs, integrating advanced sorting equipment from Europe's leading suppliers ensures a high-quality separation process with minimal labour input.



WORLD LEADERS IN RECYCLING SOLUTIONS



GET IN TOUCH TODAY TO SEE HOW WE CAN
HELP YOU ACHIEVE YOUR RECYCLING GOALS.



WWW.TURMEC.COM



MUNICIPAL SOLID WASTE (MSW) AND MECHANICAL BIOLOGICAL TREATMENT (MBT)

Turmec provide comprehensive Mechanical Biological Treatment (MBT) solutions, suitable for processing variable tonnages of Municipal Solid Waste (MSW).



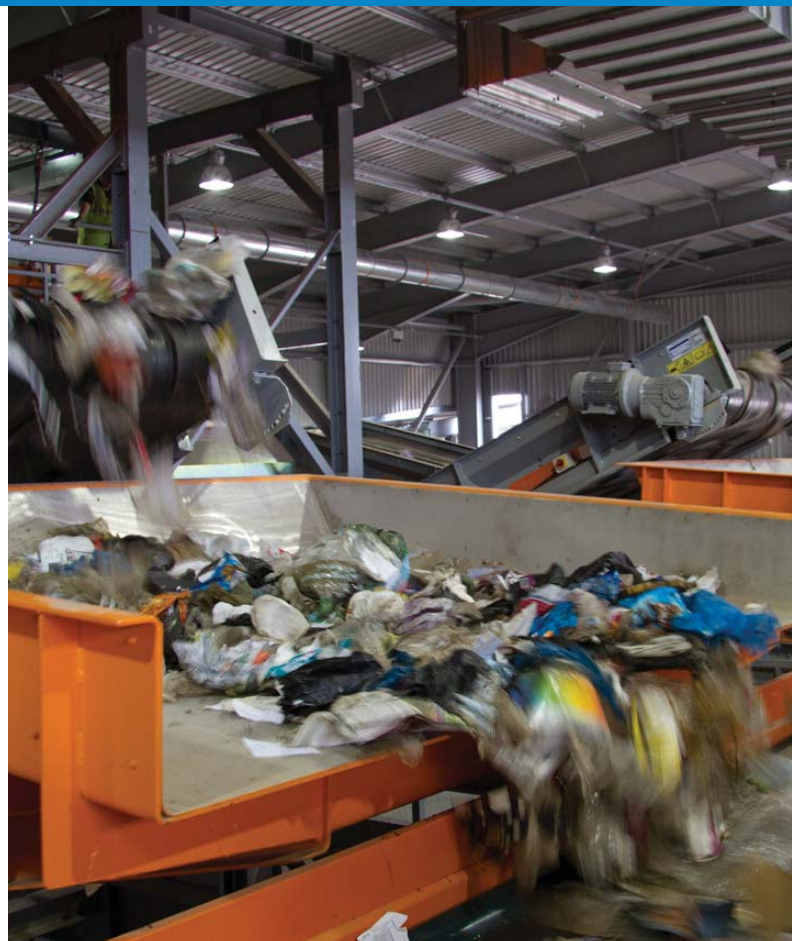
It's a challenging time for MSW where diversion targets are growing to unprecedented levels; Turmec offers bespoke engineering solutions to mechanically separate high value recyclables and biologically treat the organics fraction contained in MSW, to keep a maximum amount of waste out of the landfill.

Our systems place a high emphasis on an automated process incorporating multiple waste separation equipment from market leading suppliers throughout Europe. We offer biological treatments that can be a Dry Fermentation Anaerobic Digestion (AD), Composting, or the removal of the biomass fraction from within MSW to be dried for fuel. Turmec's bespoke designs aim to minimise plant footprint and maximise usable floorspace.

WORLD LEADERS IN RECYCLING SOLUTIONS



GET IN TOUCH TODAY TO SEE HOW WE CAN
HELP YOU ACHIEVE YOUR RECYCLING GOALS.



WWW.TURMEC.COM



FINES CLEANING (TROMMEL)

Over the past decade, Turmec has been perfecting the Trommel fines cleaning solutions offered to our clients.

These fines cleaning lines are targeting the typical fines produced from a C&D/C&I waste as the conventional fines product that was going to landfill was no longer suitable and we focused on these fines to see what we can produce from it.

After considerable R&D, we came up with a bespoke solution that gives our clients five usable products rather than one problem.

Products Recovered from Fines with Turmec's solution:

- Soil
- Ferrous metals
- Non-Ferrous metals
- Stone (Inert)
- Lights (RDF Ready)

Benefits to your plant:

- Reduce the landfill tax with your fines
- Increase your recycling rate



WORLD LEADERS IN RECYCLING SOLUTIONS



GET IN TOUCH TODAY TO SEE HOW WE CAN
HELP YOU ACHIEVE YOUR RECYCLING GOALS.

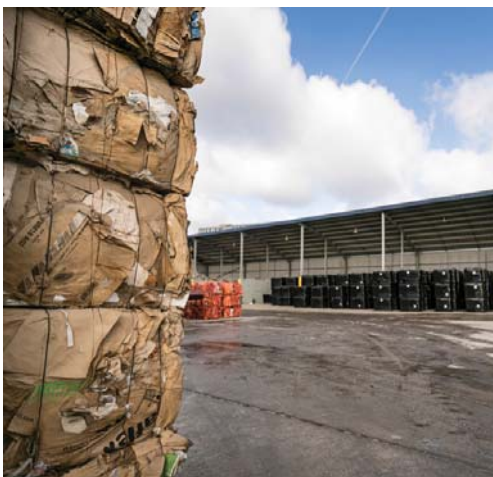


WWW.TURMEC.COM



SOLID RECOVERED FUEL (SRF) RESIDUAL DERIVED FUEL (RDF)

The processing of waste for use as a fuel such as Refuse Derived Fuel or Solid Recovered Fuel is achievable through an MSW or C&D/C&I waste stream.



Materials with high calorific value such as plastics, paper, cardboard and wood will be separated from the waste stream by means of automated separation equipment.

Not all plastics are suitable for use as a fuel source. Plastics with a high chlorine content such as PVC will be removed from the waste stream by means of optical technology.

All ferrous and non-ferrous content will be removed out of the raw product prior to a RDF/SRF being produced. The RDF/SRF can be produced to any size or specification including European Standard CEN/TC 343.

Upgrading a plant to include an RDF/SRF processing stream means further reductions in a landfill and having another source of valuable commodities. Turmec's recovery is up to 99% on the first pass which will save money, time and labour costs, as materials will only be processed once.

WORLD LEADERS IN RECYCLING SOLUTIONS



GET IN TOUCH TODAY TO SEE HOW WE CAN
HELP YOU ACHIEVE YOUR RECYCLING GOALS.



WWW.TURMEC.COM



BIOMASS

Biomass is a form of renewable energy generated from the use of organic material and the biggest single user of waste wood in the Europe.

Biomass fuel is used to produce carbon neutral electricity which is generated from the heat released when the wood chip or peat is burned. The use of biomass as a co-fuel commenced in 2008 and has increased steadily year-on-year; the amount of biomass manufactured from waste wood has doubled over recent years in the UK, to 2.1 million tonnes in 2018.

Turmec's years of experience have allowed us to design and manufacture bespoke systems for handling various biomass fuels, in a measured and controlled manner up to the point where it can be integrated into an existing fuel delivery system.

The material – such as peat and carbon neutral biomass – goes through a screening and metal removal process and can generate heat as well as electricity.

We provide feasible design solutions so that biomass plants can supply high quality fuel, which is consistent in quality, has year-round availability and can be tailored to meet the specific needs of the end consumer.



WORLD LEADERS IN RECYCLING SOLUTIONS



GET IN TOUCH TODAY TO SEE HOW WE CAN
HELP YOU ACHIEVE YOUR RECYCLING GOALS.



WWW.TURMEC.COM



RUBBER

Rubber (or tyre) recycling is the process of recycling waste tyres that are no longer suitable for use on vehicles due to wear or irreparable damage.

Because tyres are highly durable, produced in large volumes and non-biodegradable, they are a challenging source of waste, ecologically problematic and can consume valued space in landfills; but newer technologies have made tyres suitable targets for recycling despite their bulk and resilience.



The main raw materials in a tyre are rubber, steel and textile fibres, which can be recycled for either the material or the energy it contains. Rubber and steel are both recoverable and can be used in various ways - steel is removed from the tyre until there is only rubber left and Turmec specialises in recycling solutions that shred the remaining material of tyres of up to a diameter of 3 m, down to a particle size ranging from 80 to 150 mm.

We also offer shredding and processing solutions to further process the material to obtain a rubber granulate or rubber flour suitable for material recycling, which needs to be free of textile adhesion and dust fractions and 100% free of steel, to be used in products such as moulds, mats for playgrounds or horses, kerbs, bump stops or racetracks.

WORLD LEADERS IN RECYCLING SOLUTIONS



GET IN TOUCH TODAY TO SEE HOW WE CAN
HELP YOU ACHIEVE YOUR RECYCLING GOALS.



WWW.TURMEC.COM



ASH

Ash from incinerators is a product which can offer high value recoverables if processed correctly.

Turmec's solutions for Waste to Energy plants massively reduce the client's dependence on land-filling, whilst recovering value from waste in the form of electricity, recyclable metals and aggregate.

Ash from moving-grate incinerators can be processed further breaking up agglomerated materials, removing recoverables such as metals and inert materials such as stones, before being sold as clean ash to breeze-block manufacturers, cement factories and other various outlets.

Turmec have developed efficient and bespoke systems that ensure maximum efficiency for the collection and transportation of the ash underneath the bottom of the incinerator, as well as IBA treatment plants that the ash would pass through after.

Our custom-made systems have been successfully designed and built, and can include tailored shuttling conveyor belt systems - which can discharge the ash in any section of the drying bays, where it will be stored until dried -, as well as conveyors, scalping and trommel screens, magnets, eddy current and multiple bay storage conveyor systems that feed the ash through the treatment plant.



WORLD LEADERS IN RECYCLING SOLUTIONS



GET IN TOUCH TODAY TO SEE HOW WE CAN
HELP YOU ACHIEVE YOUR RECYCLING GOALS.



WWW.TURMEC.COM



GLASS

Glass has many uses as a recyclable material, from shot-blasting to filtration media.



There are significant requirements for processing waste glass in order to achieve the highest percentage of the desired target granulation, to control wear costs and preserve the purity of the material; at Turmec, we have been creating turnkey solutions for glass recoverables of different sizes and for different applications, as a stand-alone solution or integrated into an existing plant, depending on our clients' needs.

If the glass is predicted to be included in the waste flow, it can be extracted from various streams and processed to provide grades of a recyclable glass product which is ready to be taken off-site.

Both course and fine glass waste can be processed with Turmec's bespoke solutions as we design, manufacture and maintain complete systems for glass processing, that easily scale to our clients' growing needs.

WORLD LEADERS IN RECYCLING SOLUTIONS



GET IN TOUCH TODAY TO SEE HOW WE CAN
HELP YOU ACHIEVE YOUR RECYCLING GOALS.



WWW.TURMEC.COM



COMPOST

Extracting value from the organics stream has been a core focus for Turmec over the past 10 years and we are now pioneering with our compost solutions.

The EU is one of the major producers of municipal solid waste and has a common policy based on circular economy to reuse the waste.

MSW can be composted and recycled as a source of plant nutrients and improves soil properties but the origin of the waste and the compost-like output (CLO) derived is important to determine the expectation of nutrient availability and other possible risks.

Compost-like Output is derived from biological material which has been matured and broken down by bacteria for a 14 days period and has gone through a final cleaning process to remove plastic or glass that hasn't been removed previously. It can be further processed to remove such recoverables and the Turmec CLO process can recuperate unrecovered plastic and glass in biological material by up to 50%.



The Compost-like Output can be used for many purposes, such as landfill remediation or as engineered soil for golf courses.

WORLD LEADERS IN RECYCLING SOLUTIONS



GET IN TOUCH TODAY TO SEE HOW WE CAN
HELP YOU ACHIEVE YOUR RECYCLING GOALS.



WWW.TURMEC.COM



CONSULTANCY

As world leaders in recycling solutions, Turmec offers a wide range of services to the waste industry.

Our international experience and strong tradition in the Recycling and Engineering Sectors has been maintained since the establishment of the company in 1972 and demonstrates our comprehensive knowledge base and we pride ourselves on being able to offer a full range of services to our clients, including:

DESIGN

Our in-house design department can offer solutions to all our clients' needs, from plant upgrades to complete turnkey design process, from the initial conceptual designs through to a full 3D model and virtual reality stage.

OPERATIONAL EFFICIENCY STUDY

Our experienced management team can offer Operational Efficiency Studies of both Material Recovery Facilities (MRF) and yard operations; we can provide comprehensive reports on how to improve the efficiency of an existing plant, or a Cost Benefit Analysis (CBA) of potential upgrades, to ensure the best possible return on any investment made.

ELECTRICAL SURVEYS

Our dedicated team of qualified electrical engineers can carry out an electrical survey of a site to advise on power usage and how it can be refined to offer a more efficient and cost-effective solution to each client.

PROJECT MANAGEMENT

We offer project management services for any plant installation, from the construction phase to the plant fit out, supervising all aspects of the project – coordinating civils, groundwork, electrical work, management of existing buildings, etc –, making as easy as possible for our clients, so they don't have to work with multiple contractors, just Turmec.

MAINTENANCE

Our skilled team of engineers provide 24/7 response to any issues or breakdowns on a plant and we also offer different Service Contracts to suit individual needs, so that preventative maintenance can be undertaken throughout the year, to ensure maximum uptime for the operator.

WORLD LEADERS IN RECYCLING SOLUTIONS



GET IN TOUCH TODAY TO SEE HOW WE CAN
HELP YOU ACHIEVE YOUR RECYCLING GOALS.



WWW.TURMEC.COM



SPARES & SERVICE

You can rely on Turmec's total commitment in minimising your downtime - whatever equipment you have and WhICHever service you need, our qualified team can support you.

SPARE PARTS

If you need a part for your installation, we can offer you a wide range of parts, at competitive prices, Turmec carry a complete range of spare parts for all recycling plants and most screening plants. We can also make to order conveyors and Trommel drums.

Spare parts can be stored on-site at your facility to ensure quickest repair time if required with additional spare parts available within 24 hours through our depot network throughout the UK and Ireland.

ONSITE SERVICES – AFTER SALES

Turmec maintains close contact with its clients in the area of service and maintenance; and because of our organisational structure we are **on call 24/7**, reacting fast and flexibly, offering emergency breakdown services to any plant, any make, at any time.

We can also carry out preventive and planned maintenance to your installation, including registration of the measurements, inspections and a report on the state of the installation. On request we can advise on a partial or complete modernisation of your installation.

USED EQUIPMENT

We also carry a large range of used equipment - see our used equipment page and subscribe to our newsletter for more.

WORLD LEADERS IN RECYCLING SOLUTIONS



GET IN TOUCH TODAY TO SEE HOW WE CAN
HELP YOU MINIMISE YOUR DOWNTIME.



WWW.TURMEC.COM

TURMEC

WORLD LEADERS IN RECYCLING SOLUTIONS

PROVIDING BESPOKE SOLUTIONS FOR THE RECYCLING
INDUSTRY

C&D / C&I
MDR
MSW & MBT
Fines Cleaning (Trommel)
SRF / RDF
Biomass Fuel
Rubber
Ash
Glass
Compost
Mobile Eddy Current
Consultancy
Spares & Service



GET IN TOUCH TODAY TO SEE HOW WE CAN
HELP YOU ACHIEVE YOUR RECYCLING GOALS

WWW.TURMEC.COM | INFO@TURMEC.COM