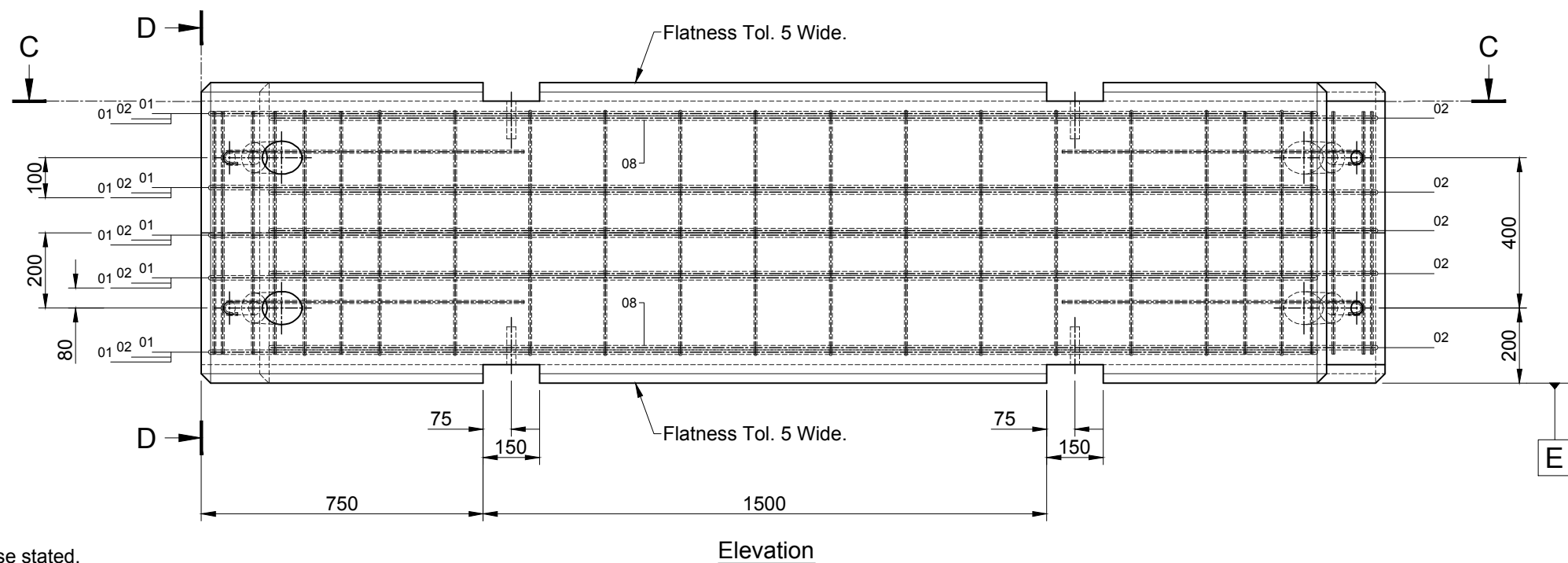
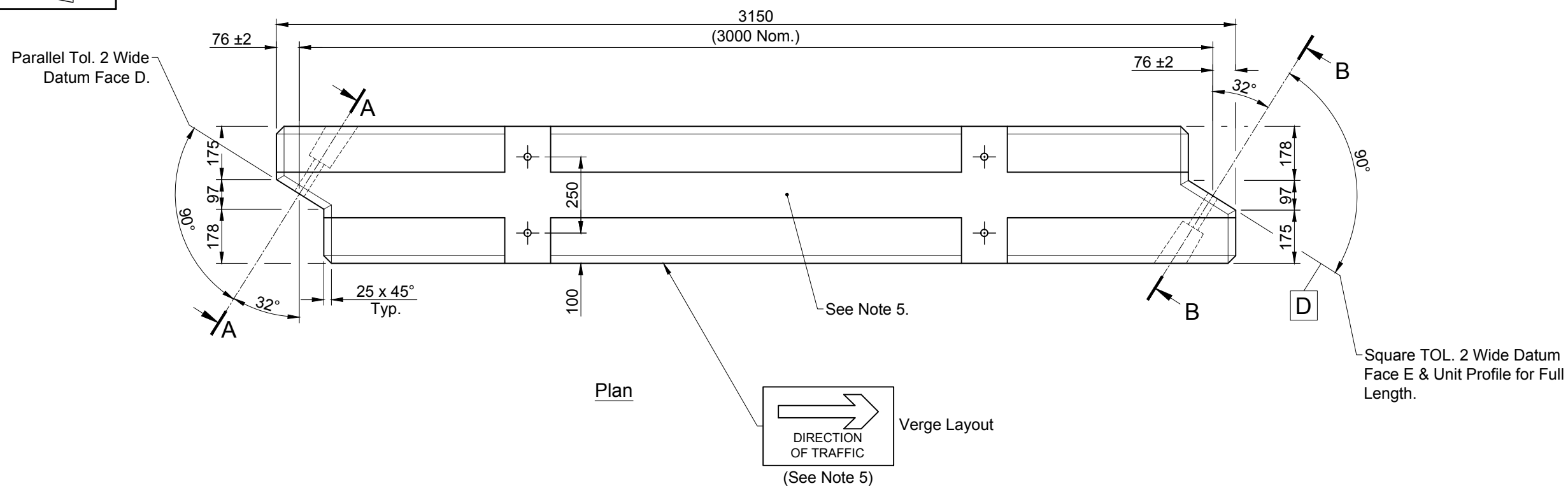
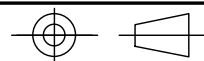


PROJECTION

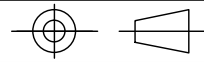


Notes

1. Dimensions in millimetres
2. Tolerance to be $\pm 0.5\%$ unless otherwise stated.
3. Concrete to be grade 50 or grade 40 with air entrainment & in accordance with the department of transport specification.
4. Cover to reinforcement to be min. 25mm. Reinforcement to be in accordance with BS4485: 1989 For bar schedule see drawing 152. Bar to be fitted in opposite directions as shown in section C - C (typ. 5 positions).
5. The casting to be permanently marked at top surface as follows:
Manufacturers name, trade mark or other means of identification & date of manufacture (month & year e.g. 5/ 91) & also direction of traffic & indication arrows to be marked as indicated.
6. The overlap of the scarf joint must always be in the direction of traffic flow.

REV	DATE	REASON FOR ISSUE	DRN	APP	REV	DATE	REASON FOR ISSUE	DRN	APP
					O	12.02.14	For Information	CTC	RD
TITLE :					ELITE PRECAST CONCRETE LIMITED				
Temporary Vertical Concrete Barrier (TVCB)					HALESFIELD 9, TELFORD				
Intermediate Unit - Sheet 1 of 2					SHROPSHIRE TF7 4QW				
Elite Product Code : -									
DRN :	CTC	CHKD :	RD	DATE :					
					DRG	150	REV	O	

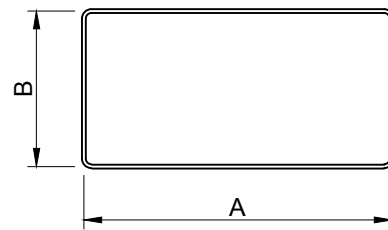
PROJECTION



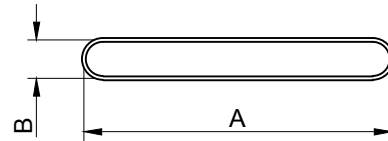
Bar Mark	Type	O/All Length	No. Off	Shape Code	Shape
01	T12	6425	10	99	

02	T10	875	10	39	
----	-----	-----	----	----	--

					A	B
03	T8	2080	12	61	645	325
04	T8	1835	2	61	645	215



					A	B
05	T8	1660	2	82	645	90
06	T8	1635	4	82	645	80



07	T12	875	8	39	
08	T8	2790	2	20	Straight
09	T8	645	16	20	Straight

Notes

1. Dimensions in millimetres
2. Tolerance to be in accordance with table 4, BS4466: 1989
3. Reinforcement to be in accordance with BS4466: 1989
Reinforcement detail abbreviations :
T8 - High Yield Bar Ø8mm to BS4449 or BS4461 Type & Grade T.

REV	DATE	REASON FOR ISSUE	DRN	APP	REV	DATE	REASON FOR ISSUE	DRN	APP
					O	12.02.14	For Information		
								CTC	RD

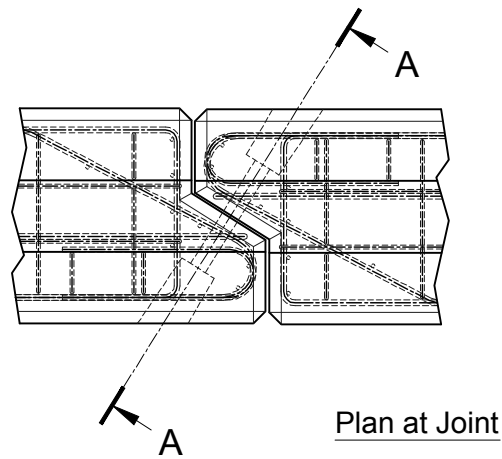
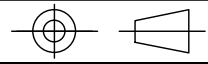
TITLE :
Temporary Vertical Concrete Barrier (TVCB)
Intermediate Unit - Reinforcement Sch.
 Elite Product Code : -

ELITE PRECAST CONCRETE LIMITED
 HALESFIELD 9, TELFORD
 SHROPSHIRE TF7 4QW

DRN : CTC CHKD : RD DATE : 12-02-14 DRG SIZE : A3 SCALE : 1:15 DRG 152 REV O

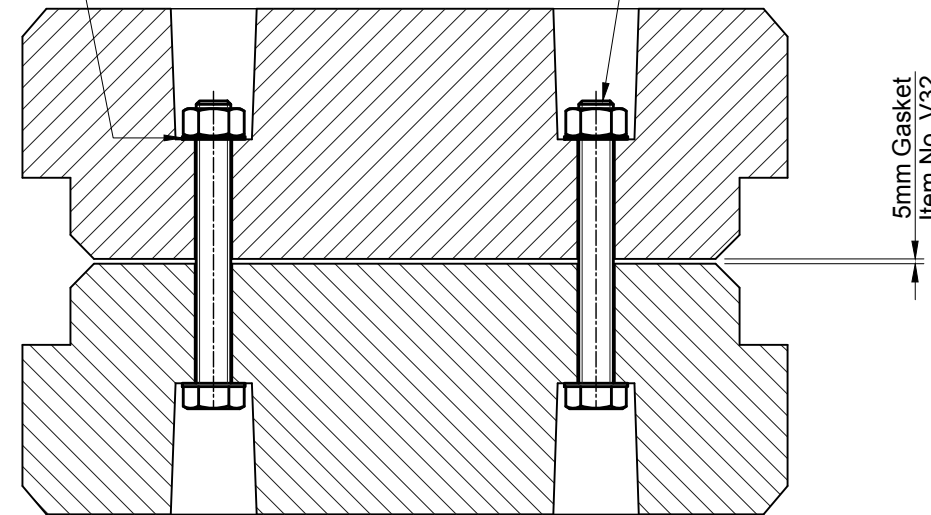


PROJECTION



Item No. V17
(4 per Joint).

Item No. F21
(2 per Joint).



Enlarged Section A - A
Detail Identical Both Ends

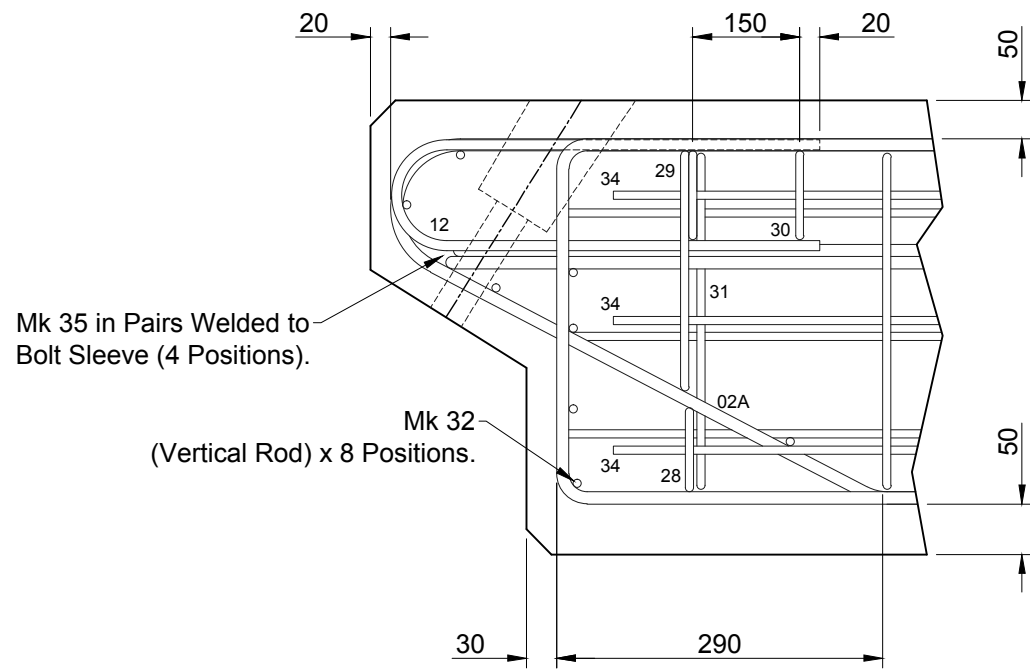
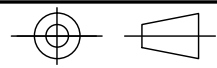
- Item No. V17 - Type G Washer 24 / 72 / 6
- Item No. F21 - M24 / 320 / Black 8.8 Grade Nut & Bolt.

Notes

1. This drawing to be read in conjunction with drawings 149, 150, 151 & 152.
2. Item F21 to be tightened to a torque of 60Nm Min, 70Nm Max.

					O	12.02.14	For Information		CTC RD	
REV	DATE	REASON FOR ISSUE	DRN	APP	REV	DATE	REASON FOR ISSUE	DRN	APP	
TITLE :					ELITE PRECAST CONCRETE LIMITED					
Temporary Vertical Concrete Barrier (TVCB)					HALESFIELD 9, TELFORD					
Intermediate Unit - Joint Details					SHROPSHIRE TF7 4QW					
Elite Product Code : -					ELITE PRECAST CONCRETE					
DRN :	CTC	CHKD :	RD	DATE :	12-02-14	DRG SIZE :	A3	SCALE :	1:15	
							DRG	153	REV	O

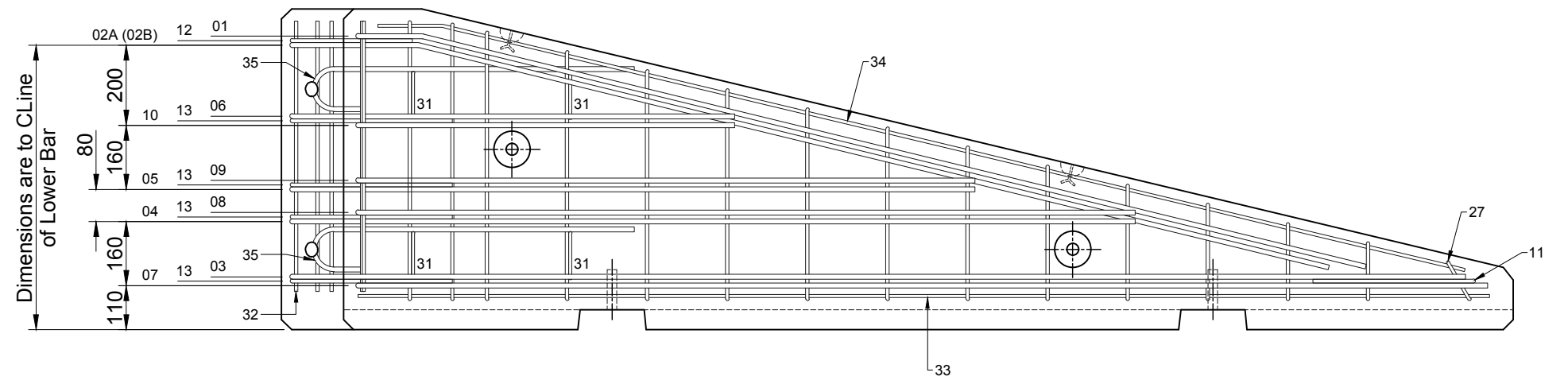
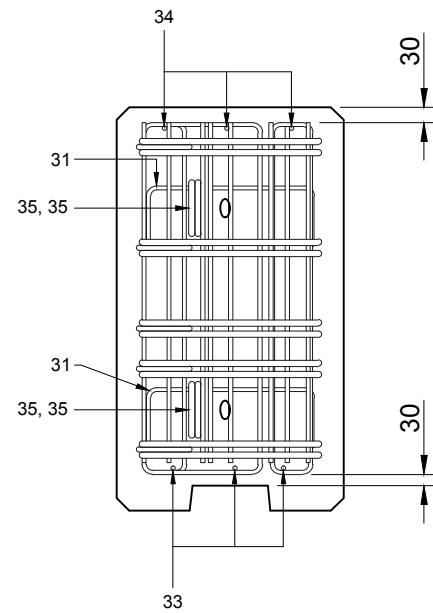
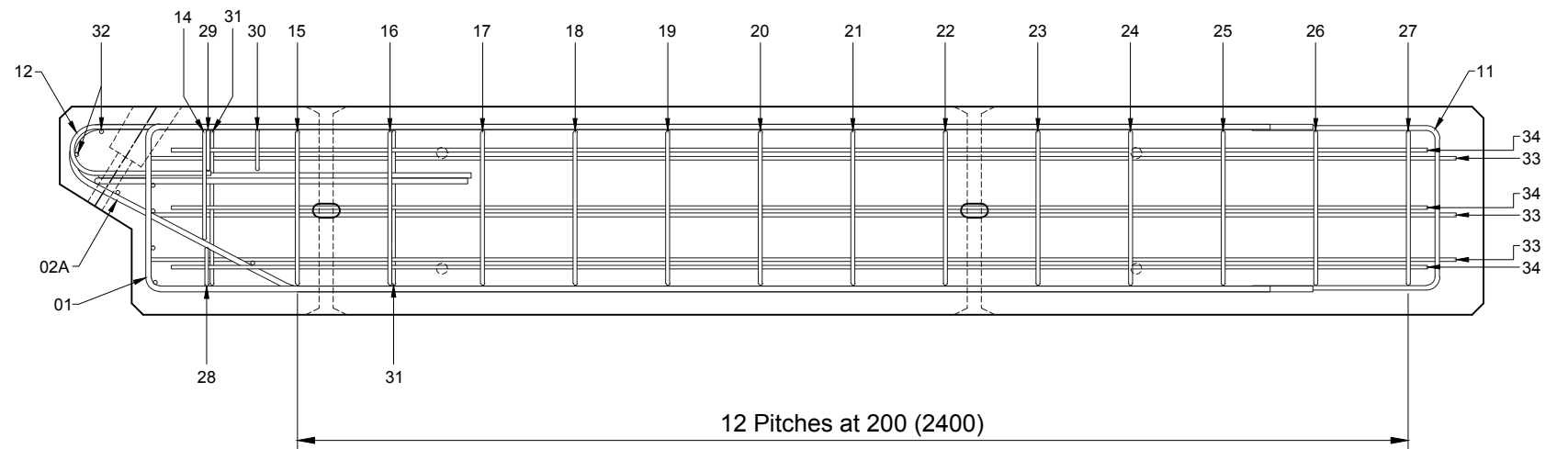
PROJECTION



Mk 35 in Pairs Welded to Bolt Sleeve (4 Positions).

Mk 32 (Vertical Rod) x 8 Positions.

Enlarged Detail



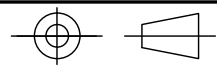
Item No.	Orientation	Remarks
V1	As Drawn	Verge (use bar mark 02A)
V2	Opp. Hand	Central Reserve (use bar mark 02B)

Notes

- Dimensions in millimetres
- This drawing to be read in conjunction with drawing 158.
- For bar schedule refer to drawing 160.
- Normal cover to reinforcement to be 50mm unless otherwise stated.

REV	DATE	REASON FOR ISSUE	DRN	APP	REV	DATE	REASON FOR ISSUE	DRN	APP
					O	26.03.14	For Information	CTC	RD
TITLE :					ELITE PRECAST CONCRETE LIMITED				
Temporary Vertical Concrete Barrier (TVCB)					HALESFIELD 9, TELFORD				
Terminal Unit - Reinforcement Details					SHROPSHIRE TF7 4QW				
Elite Product Code : -					ELITE PRECAST CONCRETE				
DRN :	CTC	CHKD :	RD	DATE :	26-03-14	DRG SIZE :	A3	SCALE :	1:15
						DRG	159	REV	O

PROJECTION



Bar Mark	Type	O/All Length	No. Off	Shape Code	A	B	Shape
01	T12	5475	1	99			
02A	T12	5425	1	99			
02B	T12	5425	1	99			
03	T12	5975	1	99	2930	350	
04	T12	4325	1	99	2105	350	
05	T12	3525	1	99	1705	350	
06	T12	2325	1	99	1105	350	
07	T12	5950	1	21	2820	350	
08	T12	4175	1	21	1940	350	
09	T12	3375	1	21	1540	350	
10	T12	2175	1	21	940	350	
11	T10	1100	1	21	400	345	

Note
Use bar mark 02A for Item V1.
Use bar mark 02B for Item V2.

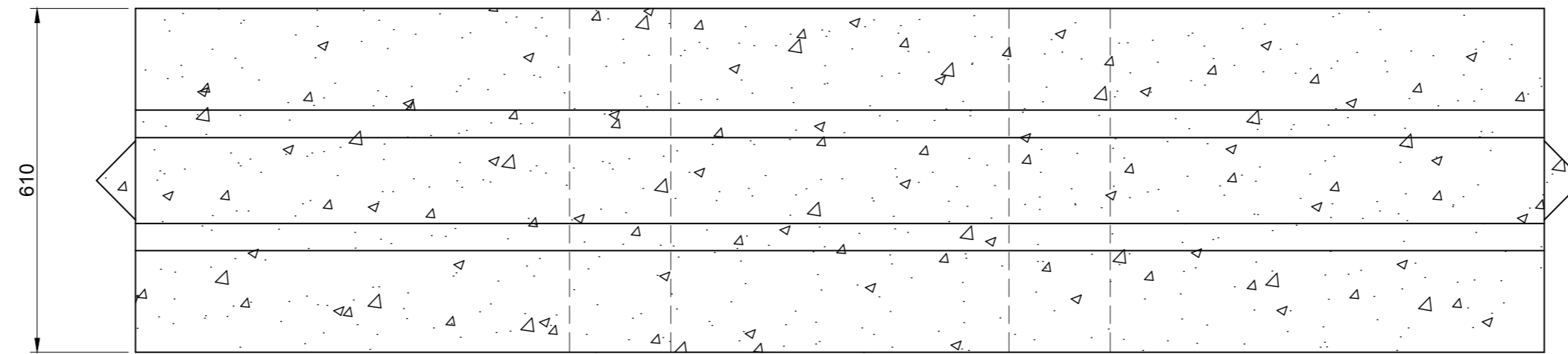
Bar Mark	Type	O/All Length	No. Off	Shape Code	A	B	C	Shape
12	T10	650	1	13	300	100		
13	T10	850	4	13	400	100		
14	T8	1975	1	51	690	230		
15	T8	2100	1	51	660	325		
16	T8	2000	1	51	610	325		
17	T8	1925	1	51	565	325		
18	T8	1825	1	51	515	325		
19	T8	1725	1	51	470	325		
20	T8	1625	1	51	420	325		
21	T8	1525	1	51	370	325		
22	T8	1450	1	51	325	325		
23	T8	1350	1	51	280	325		
24	T8	1250	1	51	230	325		
25	T8	1150	1	51	180	325		
26	T8	1050	1	51	135	325		
27	T8	1000	1	51	100	325		
28	T8	1750	1	99	690	75	115	
29	T8	1775	1	99	690	80	115	
30	T8	1775	1	99	675	80	115	
31	T8	525	4	21				
32	T8	675	8	00				Straight
33	T8	2825	3	00				
34	T8	2800	3	15				
35	T12	975	4	13				

Notes

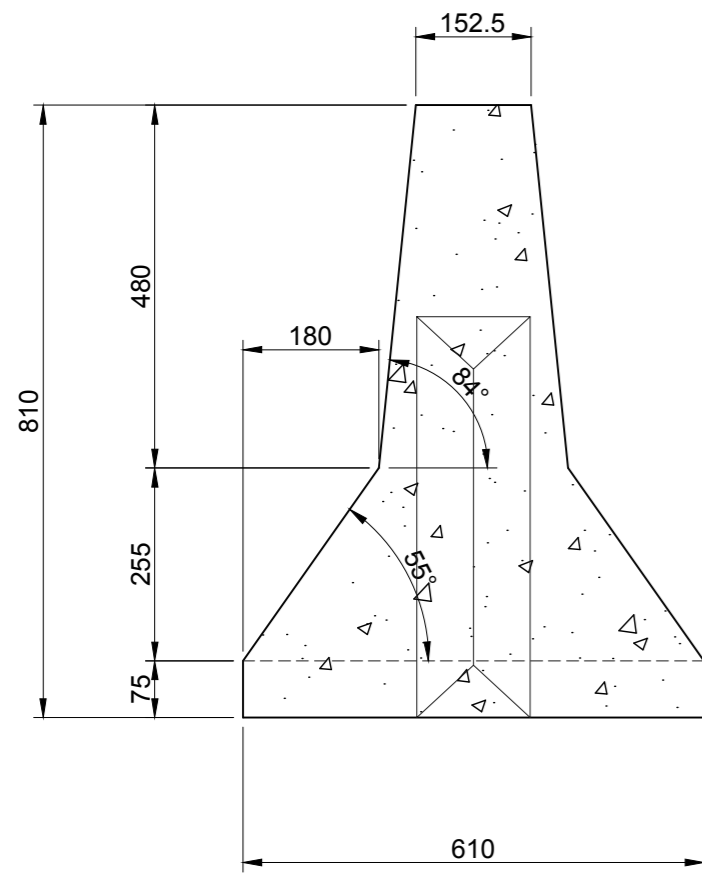
- Dimensions in millimetres
- Reinforcement to be in accordance with BS8666.
- Reinforcement to be grade 460 A or B deformed type 2 conforming to BS 4449.

REV	DATE	REASON FOR ISSUE	DRN	APP	REV	DATE	REASON FOR ISSUE	DRN	APP
					O	26.03.14	For Information		
TITLE :					ELITE PRECAST CONCRETE LIMITED				
Temporary Vertical Concrete Barrier (TVCB)					HALESFIELD 9, TELFORD				
Terminal Unit - Bar Schedule					SHROPSHIRE TF7 4QW				
Elite Product Code : -									
DRN :	CTC	CHKD :	RD	DATE :	26-03-14	DRG SIZE :	A3	SCALE :	1:15
				DRG :	160	REV :	O		

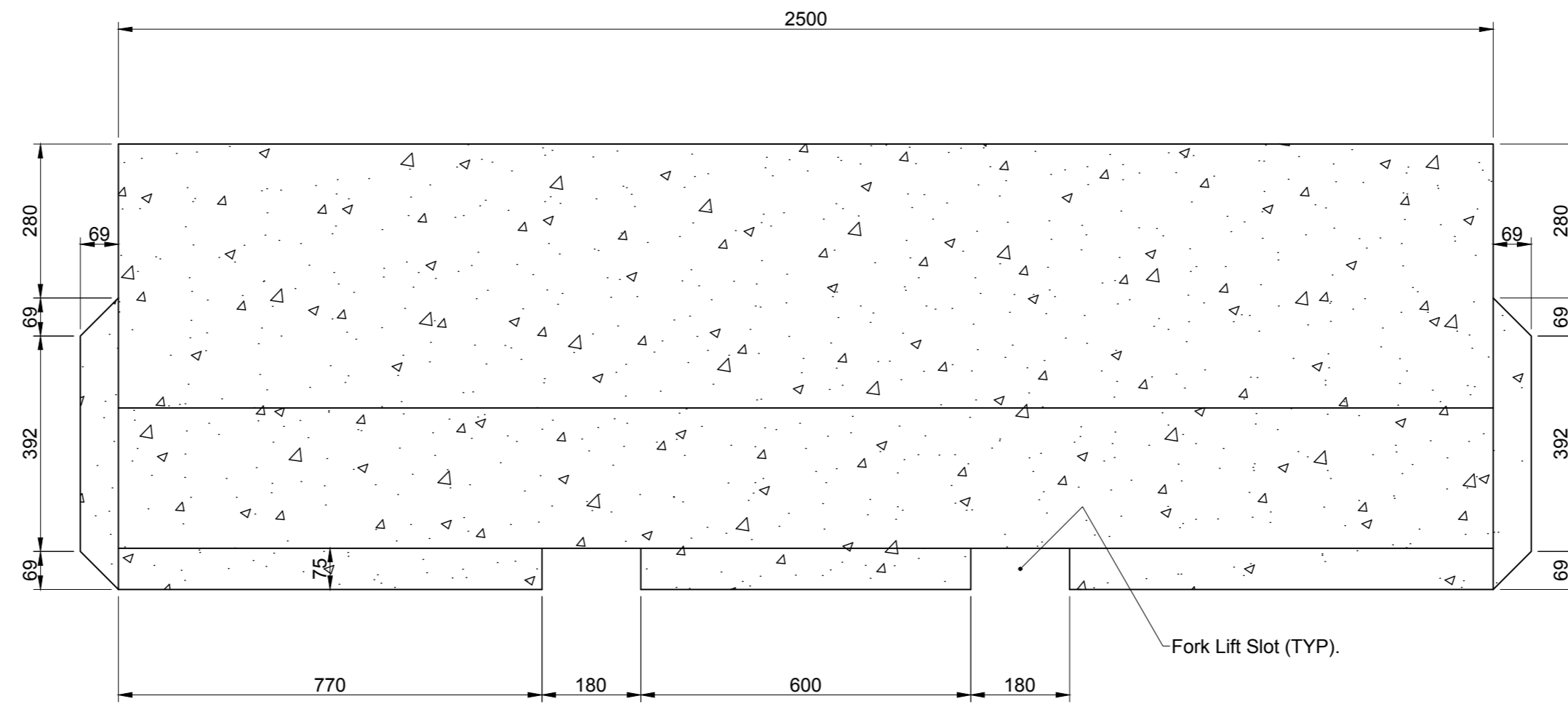
DOUBLE MALE



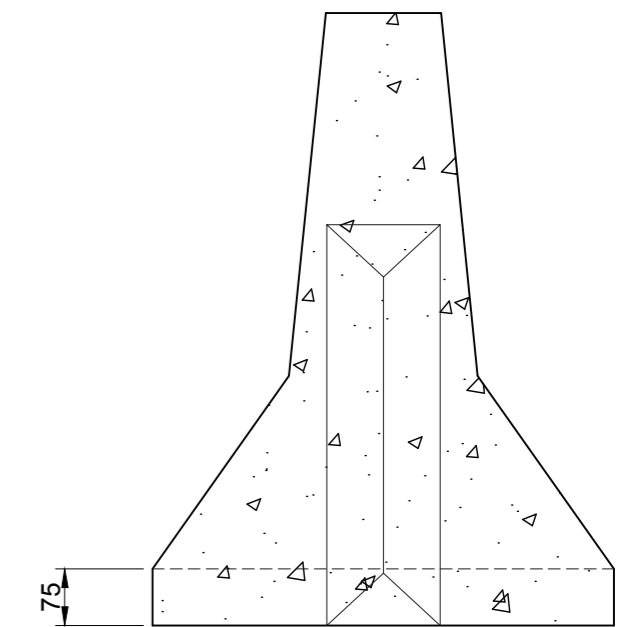
PLAN



END



ELEVATION



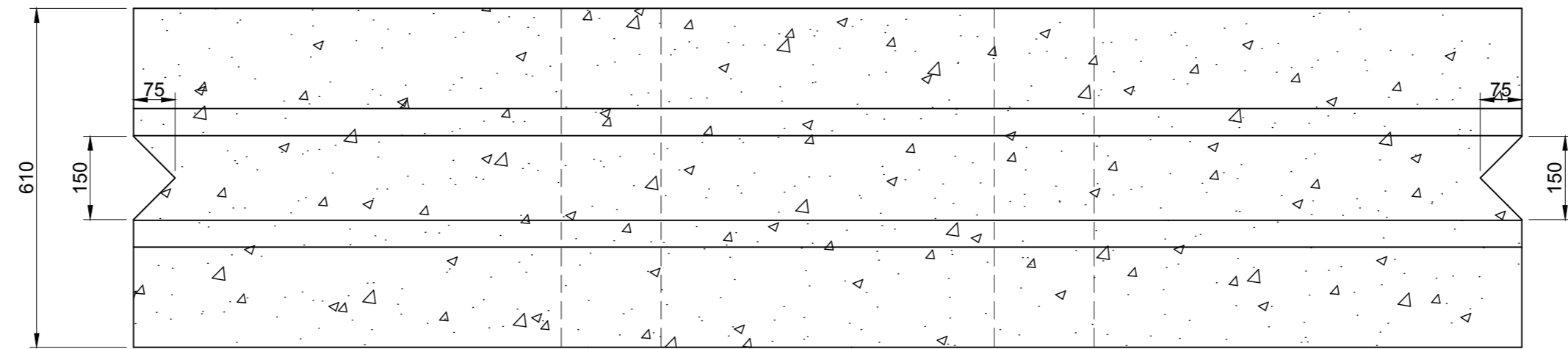
END

ELITE PRECAST CONCRETE LIMITED
HALESFIELD 9, TELFORD
SHROPSHIRE TF7 4QW

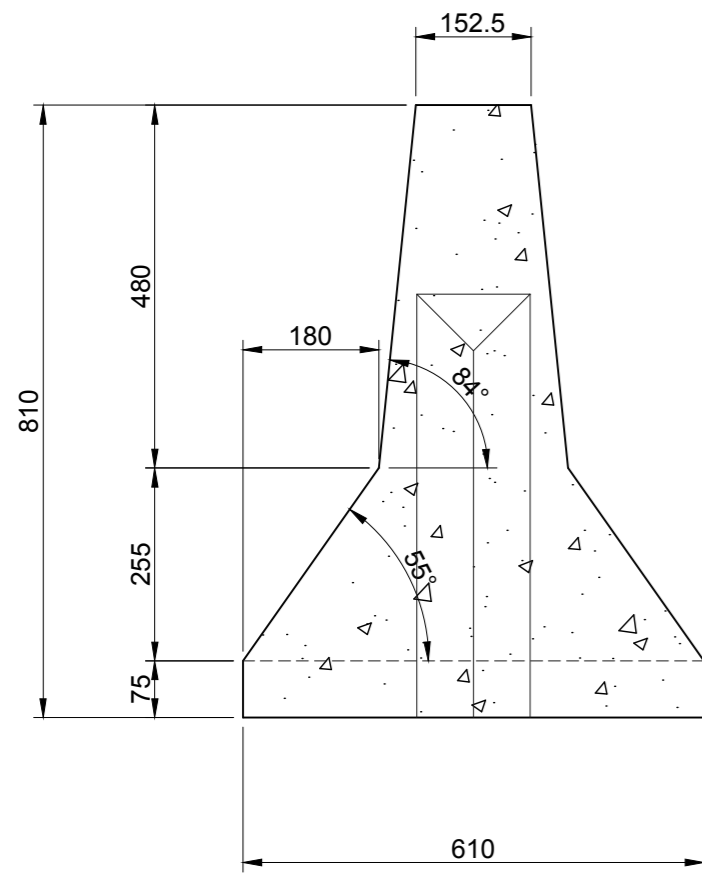


DRN	CTC	DATE	03-10-13	TITLE	New Jersey Type Road Barrier & V-Interlock 610 x 810 x 2500mm DOUBLE MALE
CHKD		DRG SIZE	A2		
		SCALE	1:10 AND AS NOTED	DRG	
				REV	0

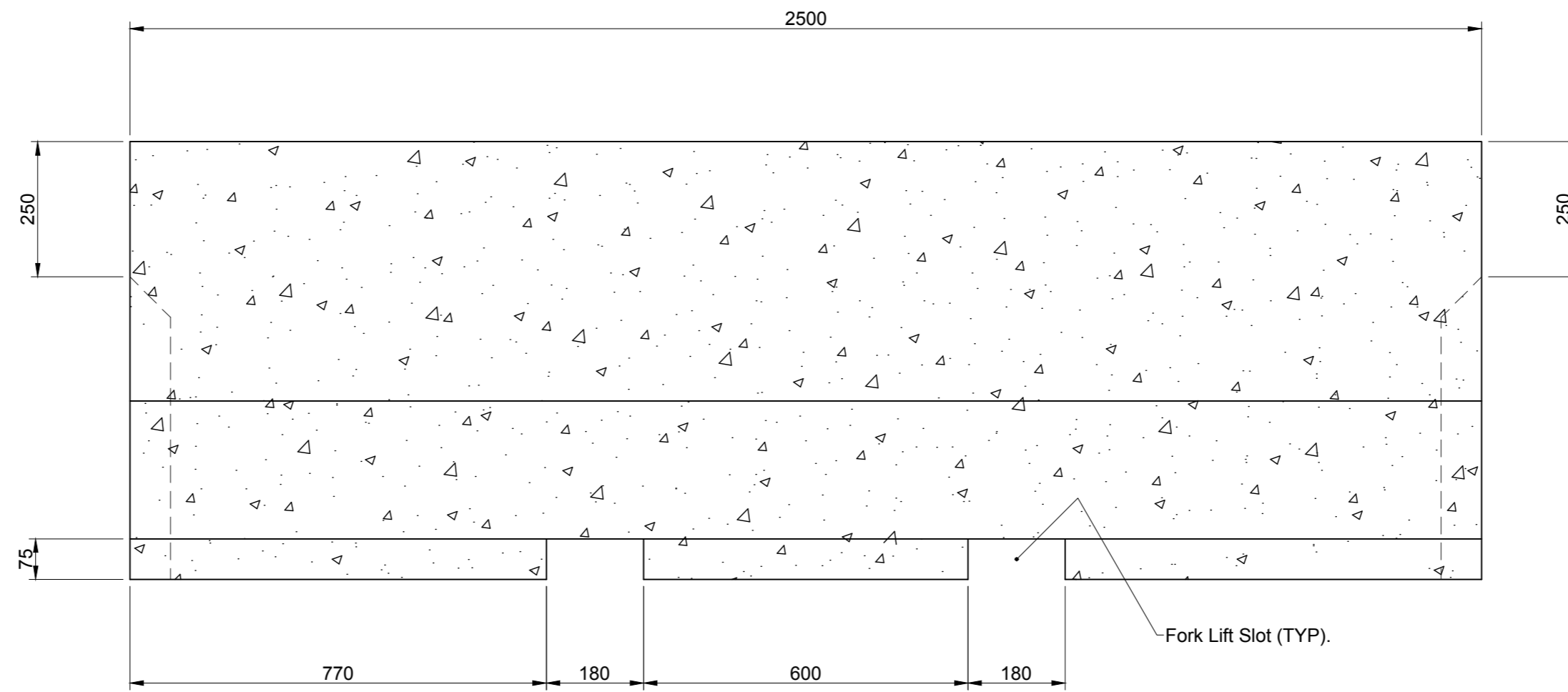
DOUBLE FEMALE



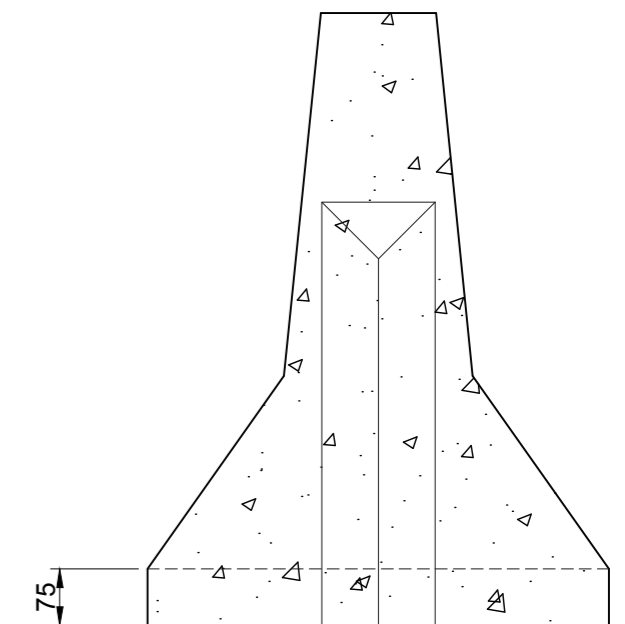
PLAN



END



ELEVATION



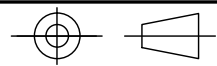
END

ELITE PRECAST CONCRETE LIMITED
HALESFIELD 9, TELFORD
SHROPSHIRE TF7 4QW

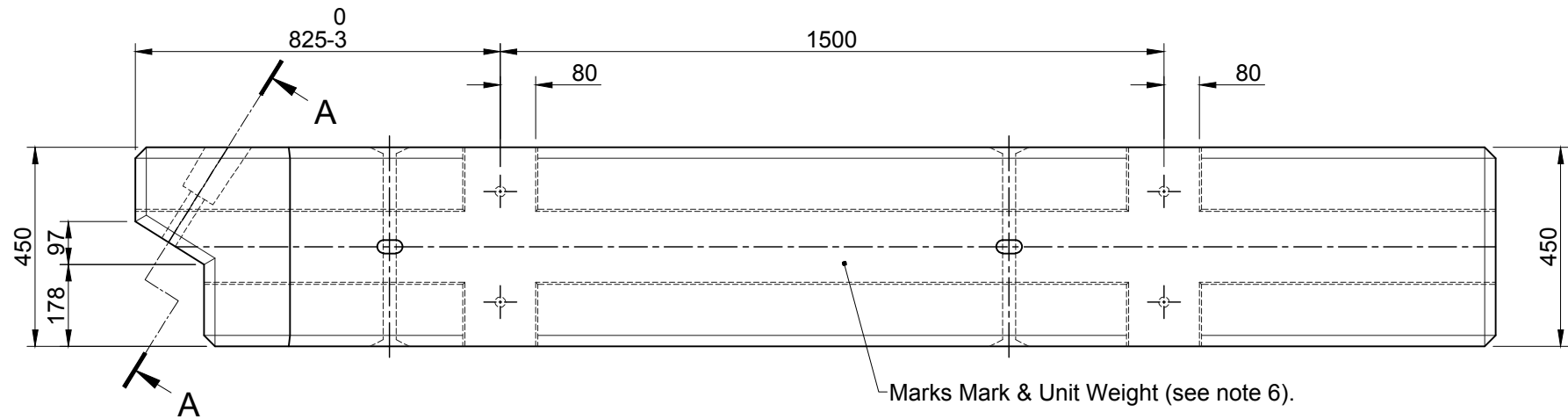


DRN	CTC	DATE	03-10-13	TITLE	New Jersey Type Road Barrier & V-Interlock 610 x 810 x 2500mm DOUBLE FEMALE	
CHKD		DRG SIZE	A2	DRG	105	REV
		SCALE	1:10 AND AS NOTED			0

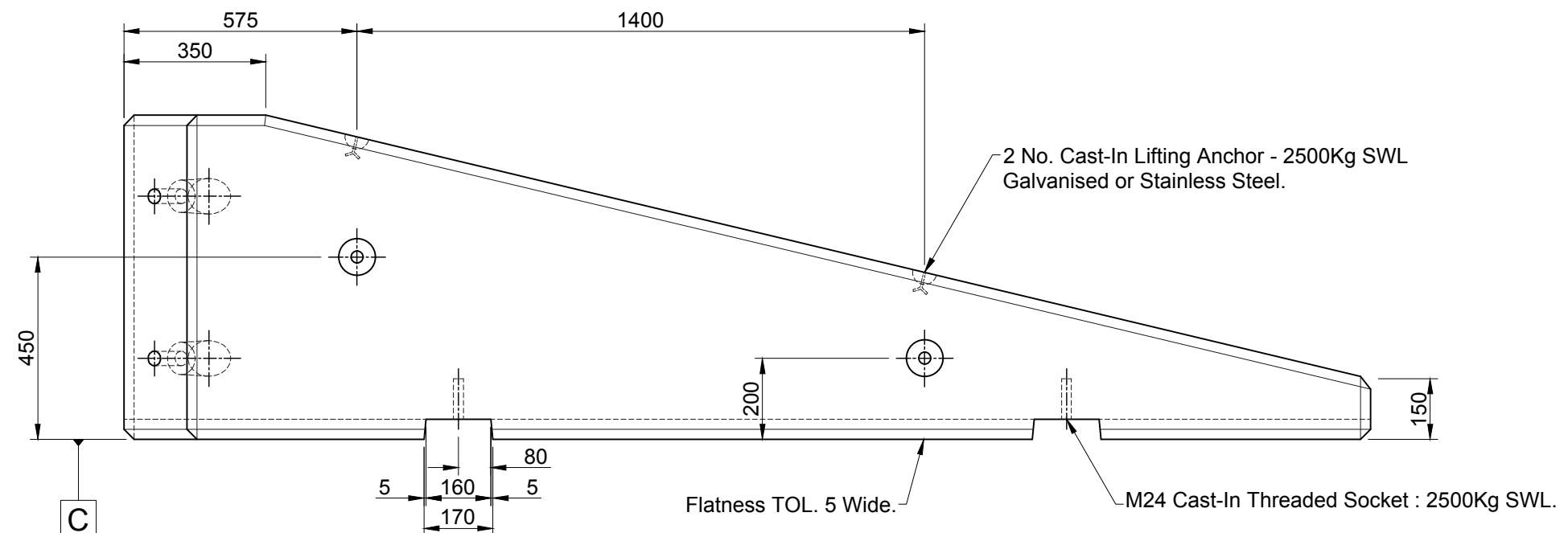
PROJECTION



Item No.	Orientation	Remarks
V1	As Drawn	Verge
V2	Opp. Hand	Central Reserve



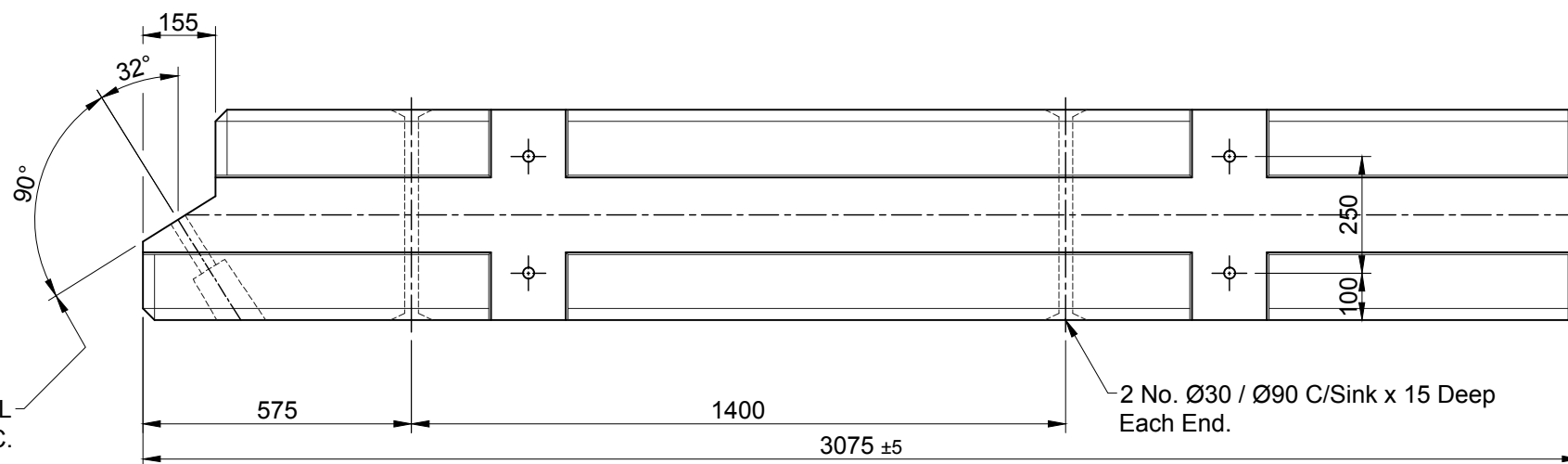
Marks Mark & Unit Weight (see note 6).



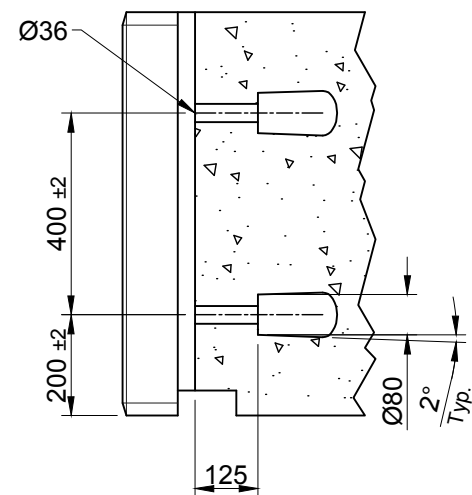
2 No. Cast-In Lifting Anchor - 2500Kg SWL Galvanised or Stainless Steel.

Flatness TOL. 5 Wide.

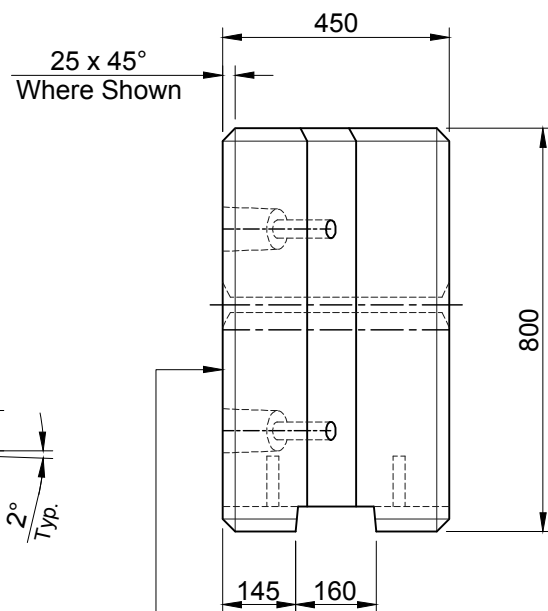
M24 Cast-In Threaded Socket : 2500Kg SWL.



Square TOL 2 Wide Datum Face C.



Part Section Arrow A - A



Profile TOL. ±2 for Full Length of Unit.

Notes

- Dimensions in millimetres
- Tolerance to be ±0.5% unless otherwise stated.
- For reinforcement details see drawing 159, & 160.
- Concrete mix C50 or C40 with air entrapment.
- The overlap of the scarf joint must always be in the direction of traffic.
- Manufacturer to establish weight from a sample unit, estimated weight of unit 1700Kg.

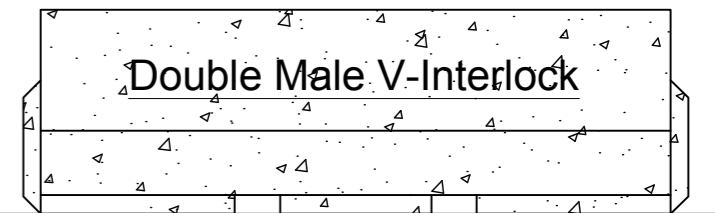
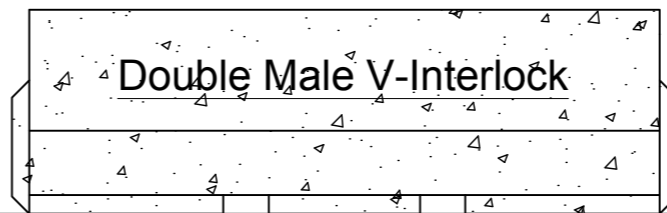
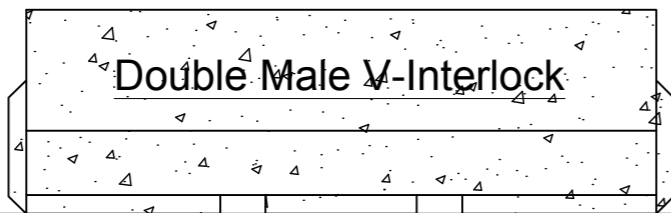
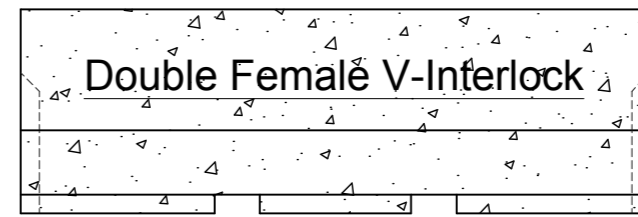
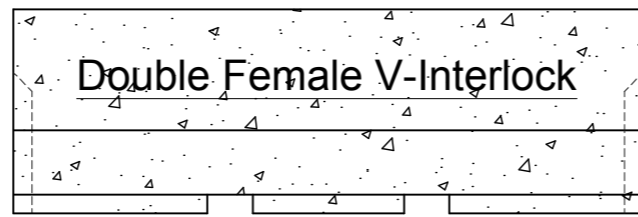
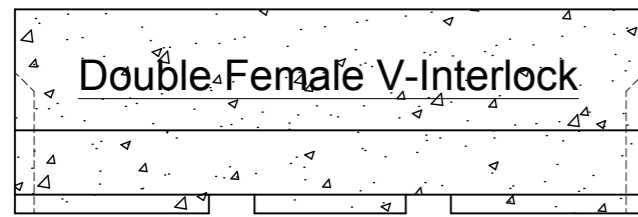
REV	DATE	REASON FOR ISSUE	DRN	APP	REV	DATE	REASON FOR ISSUE	DRN	APP
					O	20.03.13	For Information		
								CTC	RD

TITLE :
Temporary Vertical Concrete Barrier (TVCB)
Terminal Unit
 Elite Product Code : -

ELITE PRECAST CONCRETE LIMITED
 HALESFIELD 9, TELFORD
 SHROPSHIRE TF7 4QW

DRN : CTC CHKD : RD DATE : 20-03-14 DRG SIZE : A3 SCALE: 1:15 DRG 158 REV O





Ground Level

ELITE PRECAST CONCRETE LIMITED
HALESFIELD 9, TELFORD
SHROPSHIRE TF7 4QW



DRN	CTC	DATE	03-10-13	TITLE	New Jersey Type Road Barrier & V-Interlock 610 x 810 x 2500mm Typical Arrangement (Double Male / Double Female)
CHKD		DRG SIZE	A2		
	SCALE	NTS	AND AS NOTED	DRG	106
				REV	0