



DOWNLOAD THE **FREE** HUB APP TODAY

Global News &
Information
on the Quarrying,
Recycling & Bulk
Materials Handling
Industries



Check out the very latest industry news at www.hub-4.com



QUARRYING

RECYCLING

BULK MATERIALS HANDLING

Shred COSTS



Crush DOWNTIME

Raise PROFITS



blue
GROUP

Here to keep your operation moving

WORLD LEADING **MATERIALS PROCESSING EQUIPMENT, SERVICE & SUPPORT**

Call: 0345 217 8755 | Email: sales@bluegroup.co.uk | Visit: www.blue-group.com



FUCHS
A TEREX BRAND



GIANTS OF BELTING



In this issue

FEATURE STORY 4

NEWS 7

RWM PREVIEW 19

STEINEXPO PREVIEW 26

QUARRYING 45

RECYCLING 63

MRF'S 75

BULK HANDLING 77

CLASSIFIED 90



Hub Digital Media Limited
27 OLD GLOUCESTER STREET, LONDON WC1N 3AX

Issue 45 - July 2017

Sales & Advertising Enquiries:
+44 (0) 20 3637 0385

Global Sales Manager
David Roberts
+ 44 (0)7857 152184
david@hub-4.com

Editor
John Edwards
+ 44 (0)7710 653424
john@hub-4.com

Advertising Accounts Manager
Sophie Morgan
+44 (0) 7532 767 805
sophie.morgan@hub-4.com

Welcome to issue 45...

Welcome to our July edition which includes the preview of the ninth edition of the steinexpo 17. Held in Germany in the MHI Nieder-Ofleiden basalt quarry the show attracts the leading manufacturers of construction machinery, suppliers of mineral processing equipment, suppliers of add-on equipment and industry service providers. The last edition of the show attracted 48,130 visitors and included 254 exhibitors and this year's show which will be held over four days from the 30th August (Wednesday to Saturday) looks set to be a bigger success!

In the UK, the annual RWM (Resource Waste Management) will be held at the NEC from the 12-14 September, this event is also host to the Energy, Renewables and Water Show.

The RWM show is the UK's premier event for resource efficiency and waste management solutions. It is the only event of its kind, covering all aspects of the waste hierarchy. In partnership with the CIWM the event spans each element of the industry and is shaped around the demands of this rapidly growing sector.

With this our 45th issue we have five more to go before we reach our 50th milestone and a very special edition, enjoy your exhibitions and good hunting!

John Edwards
Editor



Magazine Subscriptions - the HUB magazine is available free of charge within the UK, please send an email to admin@hub-4.com stating your name, title, company, full postal address and email address. We will then review your application. The HUB Magazine is also available in Europe, Ireland, the USA and Worldwide on a paid subscription basis at £115 (+ VAT per year where applicable) for six issues, please email admin@hub-4.com for more details or call +44 (0)20 3637 0385.

Westminster Waste vote BlueMAC Plant a big success



Blue London have recently supplied a BlueMAC plant to Westminster Waste for their new site in South East London. Westminster Waste was set up in December 2010 by Managing Director Dominic Moule, and has grown swiftly over the last 6 years, now employing over 70 staff. Originally the business began processing waste at a compact site in Bermondsey, and while this site is still utilised by the business today, their main operation is now at a new 3 acre site in Charlton.

Processing C&D waste is the core function of the business which is brought in by a fleet of 30 Westminster Waste vehicles and also third party 'drops'. Current volumes stand at around 1,500 tonnes per week, with the waste coming from across South East London and Kent.

In terms of the plant, which was designed built and commissioned by BlueMAC, the process is:

- C&D Material loaded into the hopper which takes the material via conveyor to a 1025 trommel
- -50mm are extracted via the trommel
- Long pieces within the -50mm are recirculated via a long piece separator back to the +50mm line
- The -50mm is taken under an overband magnet to extract the ferrous metal and then to a SPALECK flip flow when extracts the -10mm fines.
- The remaining 10-50mm moves into the BlueMAC Air Separation Unit to split the light and heavy fraction
- The +50mm from the trommel is taken to a 7 double back picking line with 1200mm belt.
- All recyclable materials are extracted by the manual sorters into the bays below
- The remaining material moves under and overband magnet before going into a Westeria 1000 Airstar which separates the remaining light and heavy fraction into two bays below.

blueMAC
MANUFACTURING



The new plant has allowed the business to recycle a much higher percentage of material. The wood waste is shredded and screened via a Doppstadt AK510K shredder and Powerscreen Warrior 1400X screen on site, to create a biomass material, while others materials are sent out for further processing and baling. The small amount of material that can't be recycled is sent for recovery as RDF and the process is much more automated and significantly less labour intensive than previously, meaning overall costs have been reduced.

Commenting on the new BlueMAC waste recycling plant, Dominic Moule said "The new plant has allowed us to process and recover a lot more material from the C&D waste stream." When asked what is impressive about the plant so far, Dominic also said, "It's the simplicity and the fact that should we have any issues, we know Matt Scott (Salesman), and Albert (Service Manager), will be there to keep our equipment running. This is especially critical for us as we work 24 hour shifts."

Matt Scott – "I would like to thank Dominic and his team for their continued support and loyalty to Blue London. It is a pleasure working with such a progressive thinking company and to be part of such a successful growth of the business. I look forward to working with Westminster Waste on their next project."



www.hub-4.com/directory/2260



BlueMAC Manufacturing
108 Trewmount Road, Killyman,
Dungannon, Co. Tyrone
Northern Ireland
BT71 7EF

TIME FOR A CHANGE... OF COLOUR?



 **HYUNDAI**

SENNEBOGEN

 **TEREX.**
Environmental Equipment

 **Keestrack**

NPK

- \\ WHEELED EXCAVATORS
- \\ WHEEL LOADERS
- \\ MATERIAL HANDLERS
- \\ RECYCLING
- \\ WOOD HANDLING

- \\ TROMMEL SCREENS
- \\ SHREDDERS
- \\ GRINDERS
- \\ SCREENERS
- \\ JAW CRUSHERS

- \\ IMPACT CRUSHERS
- \\ ATTACHMENTS
- \\ MATERIAL HANDLERS
- \\ DEMOLITION GRABS
- \\ WIND-SHIFTERS

AUTHORISED DEALER

 **MOLSON**
GREEN

BRISTOL OFFICE:
MOLSON, SMOKE LANE,
AVONMOUTH,
BRISTOL BS11 0YA

www.molsongroup.co.uk
E: info@molsongroup.co.uk

TEL: +44 (0) 1179 820 123 FAX: +44 (0) 8450 179516

WARRINGTON OFFICE:
MOLSON, ATHLONE ROAD,
WARRINGTON
WA2 8JJ

New strategic partnership

CMS Cepcor® Limited, based in Coalville, Leicestershire and Requip Supplies Limited, based in Newark, Nottinghamshire have agreed a new strategic supply partnership to better serve the growing global aftermarket demand for premium quality jaw, cone and impact crusher spare parts along with replacement screen and asphalt plant spares.



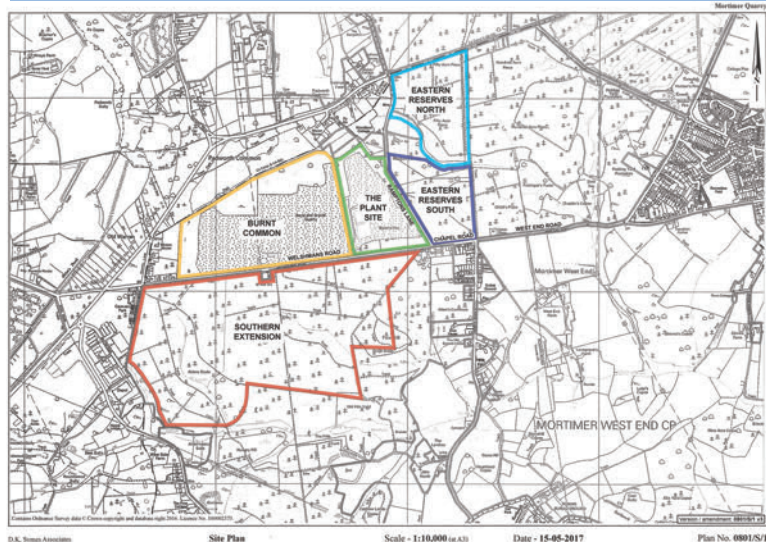
Requip has for many years been accepted as the leading UK supplier of impact crusher spare parts, whereas, CMS Cepcor® are the leading and largest supplier of cone and jaw crusher spares and service, combined our joint experience and product range provides crusher operators with a genuine alternative for most popular crusher brands and models.

As part of the supply partnership CMS Cepcor® will manage and distribute the entire Requip stock inventory from our global headquarters based in Coalville, utilising our modern warehousing and distribution networks. Requip will continue to focus on product support and development of their impact crusher ranges.

With a combined sales turnover approaching £30 million GBP and stock inventory of over £10 million GBP the alliance strengthens the position of both CMS Cepcor® and Requip as the genuine alternatives to the OEM.

Requip sales team can be contacted at + 44 (0) 1636 671520 | sales@requip.co.uk

CMS Cepcor® sales and service teams can be contacted at + 44 (0) 1530 817000 | sales@cmscepcor.com



Hills Quarry Products secures contract for mineral reserve at Mortimer Quarry, Berkshire

Hills Quarry Products, a Wiltshire based family owned company, has been selected by The Englefield Estate to undertake mineral extraction at Mortimer Quarry (Southern Extension) near Basingstoke on the Berkshire/Hampshire border.

Edward Crookes, Estates Director, said: "Hills has been awarded the contract following a rigorous selection process during which they impressed the Estate with their track record in the industry, particularly their attention to detail in restoring sites once work is complete."

The quarry, which was granted planning permission in May 2015, is expected to yield an estimated 2,000,000 tonnes of sand and gravel over a period of ten years and is of strategic importance as a source of minerals for infrastructure and construction in the region. Extraction is scheduled to commence in early 2018.

Peter Andrew, Group director Hills Quarry Products, said: "We are proud to have been chosen by the Englefield Estate to be their mineral partner and look forward to working with both the Estate and the local community to achieve the high-quality restoration the site deserves."

Extracted material will be sent by ground level conveyor across the Southern Extension area to a fully enclosed gantry that crosses Welshman's Road to deliver the material to the existing plant site.

Progressive working will ensure that areas left open for extraction are kept to a minimum. Once worked, these areas will be restored to a combination of woodland and biodiverse habitat attractive to wildlife. No imported materials will be used in the restoration process and on completion of the final restoration work, the site will be subject to a further 10-year aftercare programme.



CDE

EvoWash

The EvoWash™ sand washing plant offers unrivalled control of silt cut points, eliminating loss of quality fines to your settling ponds or water treatment phase.



Maximum dewatering

Maximum wear resistance

In-specification sands

Ease of maintenance

cdeglobal.com

 CDE Global

 @cdeglobal

CMS Cepcor invest in the future



CMS Cepcor® have further increased their CNC manufacturing capacity with the installation of a new Correeanayak Norma 25 CNC bed type milling machine.

The Correeanayak Norma 25 can be used for heavy duty roughing operations and for highly accurate finish machining of complex components proving them to be incredibly versatile for CMS Cepcor® (the new machine bed also incorporates a rotary table for added flexibility).

This machine adds to their existing Correeanayak Norma 25 and Norma 45 bed mills and the recent installation of a Doosan Puma VT1100 at their Coalville technical centre. With all machines now installed this represents a huge increase in the capacity and the company's commitment to re-investment and UK manufacturing, which will play a part in meeting the growing global demand for high quality UK manufactured crusher spare parts.

CMS Cepcor® operate an extensive and modern UK manufacturing facility in Coalville, Leicestershire, which includes CNC, milling, turning, boring, slotting, grinding, drilling, welding, co-ordinate measuring and material testing.

CMS Cepcor® Limited is Europe's largest aftermarket manufacturer and supplier of premium quality crusher, screen and asphalt plant spare parts and service supplying



worldwide to the mining, quarrying, demolition and recycling industries.

Based in Coalville, Leicestershire the company is located close to the motorway network and within easy reach of international airports.

Exporting to 120+ countries CMS Cepcor® operate ISO9001:2008 quality management, ISO18001:2007 safety management and ISO14001:2004 environmental management systems certified by Lloyd's Register QA, UKAS 001.



www.hub-4.com/directory/1761



Rob Symons
Director CRJ Services

“Together we have a market-leading portfolio of machines which are multi-purpose and suited to handle any type of material. However, it’s not just about the machines. We pride ourselves in providing an honest, transparent and efficient service that adds value to our customers.”



Ben McQuaid
Director Matpro Machinery

“Our new partnership will mean both Matpro Machinery and CRJ Services are equipped to offer more enhanced purchase and hire services. With a parts stock holding valuing over £1 million and 17 trained engineers, we have exceptional aftersales capabilities to help satisfy increasing customer demands.”





Weighing operations to benefit from 97-99% uptime with unique service cover offering from Avery Weigh-Tronix

Testing a weighbridge in the factory

Smethwick, UK: Avery Weigh-Tronix today unveils Uptime Select – a brand new range of service cover packages for weighing equipment. In an industry first, Uptime Select offers 99% operational uptime and all-inclusive service cover.

From airline check-in desks and warehouses, to food production lines and landfill sites, accurate weighing is crucial for most industries to satisfy legal compliance, ensure safety and to protect revenue.

Designed to safeguard operational weighing performance, Uptime Select™ spans routine preventative maintenance, recalibration, reverification, emergency call out and product repair or replacement.

Three discrete Uptime Select product groups meet the different service cover needs for major categories of weighing equipment: weighbridges (with BridgeCare Total™ and

BridgeCare™); heavy-capacity integrated scales (with Weighcare Total™ and WeighCare™); and standalone, light capacity scales (with ProCare Total™ and ProCare™).

For business-critical equipment, Care Total agreements give the assurance of up to 99% uptime through fully-inclusive service and maintenance cover – a promise backed by a proportional refund of the annual premium if the agreed service level is not met. For other equipment, Care agreements offer 8-hour/next-day response and market-leading comprehensive cover. All customers are assigned a named team of engineers, ensuring detailed operational familiarity and service continuity.

Deploying 150 engineers, a 24-hour National Response Centre will co-ordinate field service calls. Any UK postcode sits within 26 minutes' travelling time of a qualified engineer, whilst the UK's largest fleet of ten strategically-placed weighbridge test units ensures reverification equipment is typically less than an hour away. >



Paul Hines, Innovation Director shows us the key features of a weighbridge

Paul Hines, Innovation Director at Avery Weigh-Tronix, said: "Our new Uptime Select offer is a radical shift for the industry. We spoke to our customers and designed a solution which reflects what they really want and need from service agreements. Avery Weigh-Tronix has swept away the complexity and confusion associated with traditional service contracts. Our new products are completely transparent: customers can see instantly what is and is not included, and what (if anything) may be chargeable.

"Most importantly, since engineering teams become familiar with their customers' sites, we can ensure even faster call-to-fix times to keep downtime to an absolute minimum."

Service contracts, operational availability and Uptime Select

Avery Weigh-Tronix is committed to maximising customers' productivity and operating efficiency. Company research has shown customers want to ensure the availability and accuracy of both critical and non-critical weighing equipment.

The market also wants to minimise environmental pressures should equipment fail or need replacement. Uptime Select introduces an all-new approach to service contracts that guarantees uptime whilst reducing complexity and associated waste. Highlights include:

- Fully-inclusive cover guaranteeing up to 99% uptime
- Service agreements for weighbridges
- Rebates for below-SLA uptime or no call-outs
- A 24-hour response centre
- An engineer within 26 minutes' travel of any UK postcode
- 10 weighbridge test units UK-wide
- 150 specialist engineers nationwide
- Named engineers, familiar with each site
- On-site repair, equipment swap-out or recycling
- Cover levels recognising critical or non-critical equipment

Service cover for weighbridges

For many industrial operations, including waste and recycling, mining, aggregates and construction, operation of heavy-duty weighbridges is business-critical. Service

needs extend beyond simply catering for breakdown or failure. With an uptime guarantee of at least 97% per weighing system (tracked through an online asset portal) BridgeCare Total provides rapid, fully-inclusive cover to ensure equipment is maintained, diagnosed, repaired and reverified quickly.

Where weighbridges aren't part of a revenue system, preventative maintenance ensures uptime and availability. Competitive BridgeCare provides a generous level of cover to keep weighbridges properly serviced. The agreement includes



The Avery Weigh-Tronix management team at the launch

calibration by one of Avery Weigh-Tronix's fleet of ten test units and preventative maintenance. Customers enjoy an 8-hour response and discounts on parts and repairs.

Service cover for heavy-capacity integrated scales

Many production, formulation and distribution environments rely on within-tolerance weighing to support continuous operation. WeighCare Total minimises the risk of weighing equipment failure and guarantees the fastest possible time-to-fix should a breakdown occur. The agreement guarantees at least 97% availability for integrated, in-situ scales. All call outs, parts (including load cells) and repairs are included. Cover can include a stock of on-site spares to further minimise call-to-fix times.

Where other weighing equipment is available in the event of failure, WeighCare offers a more cost-effective alternative, combining generous preventative maintenance with access to reduced-cost repairs. The service includes dedicated Avery Weigh-Tronix engineers, with an 8-hour response UK-wide.

Service cover for stand-alone, light-capacity scales

Logistics companies and production lines often use multiple, lighter-capacity, stand-alone scales. When a failure occurs, it's faster and more convenient to simply replace the unit. ProCare and ProCare Total service agreements provide the ability to swap out faulty equipment such as balances, checkweighers, bench scales and counting scales affordably and sustainably.

ProCare Total offers a contingency stock of boxed, tested scales on site allowing staff to make an instant replacement in the event of a fault, guaranteeing 99% availability.

It includes fully inclusive calibration visits and return-to-base collection. Where immediate replacement is not needed – for instance, where several bench scales are available – ProCare offers a next-day replacement by an engineer, removing the need to hold stocks. Basic diagnostic review and labour is also included.



Lance Read, Vice President and General Manager. Now in his eleventh year with the company, Lance is responsible for the company's UK and international business. Previously Lance held senior roles within the automotive and heavy industrial sectors.

About Avery Weigh-Tronix

We are one of the world's leading suppliers of weighing solutions and service. With more than 250 years of combined experience, we draw on the latest research and technology from around the globe to design, manufacture, install and service a range of high quality, industry-leading weighing systems.

Avery Weigh-Tronix is owned by Illinois Tool Works Inc., a globally diversified industrial manufacturer with 100 years of history. The company trades under the New York Stock Exchange as ITW and is a Fortune 500 company.



New branding for AVTX

Avery heritage and the Soho Foundry: timeline

- 1731 James Ford establishes a business making "stilliards" (portable scales) in Digbeth, near Birmingham. Subsequently, the business is transferred to William Avery, soon joined by his brother Thomas, to become W&T Avery
- 1876 W&T Avery make their first weighbridge
- 1887 First service and maintenance contracts launched
- 1895 W&T Avery acquires James Watt & Co and moves to the 25-acre Soho Foundry site in Smethwick
- 1971 US-based Weigh-Tronix incorporated and launches unique Weigh Bar solution
- 2000 Avery and Weigh-Tronix merge and rebrand as Avery Weigh-Tronix
- 2008 Avery Weigh-Tronix is acquired by Illinois Tool Works (ITW)
- 2012 ITW celebrates its 100 year anniversary
- 2018 The Avery brand is 200 years old

www.hub-4.com/directory/8298

Lincoln Quicklub P203 pump from SKF

The market-leading lubrication pump for small and mid-size machinery

- Delivers grease up to NLGI 2 and oil
- Provides up to 250 lubrication points
- Four reservoir sizes: 2, 4, 8 and 15 litre
- Numerous pump versions available
- Suitable for stationary or mobile equipment
- Drives up to 3 pump elements



T: 01295 256611
www.skf.co.uk/P203

LINCOLN
An SKF Group Brand

SKF

trakmix

TRACK MOUNTED / TOTALLY MOBILE /
SELF CONTAINED / FULLY WEIGHED /
HIGH VOLUME MIXING PLANT.



rapid

www.rapidinternational.com



STEELWELD

ENVIRO PRODUCTS LTD

CREATIVE RECYCLING SOLUTIONS

Steelweld Strobe ECS 1500



Steelweld Enviro Products Ltd design and manufacture a world class range of innovative solutions to the waste recycling sector.

As a subsidiary of Steelweld Fabrications Ltd, we have over 30 years' experience partnering with world renowned brands manufacturing equipment in our 60,000 sq ft site based in Cookstown Co.Tyrone.

We offer both a **Tracked and Static Recycling Machinery Range** featuring innovative designs which give high performance and are low maintenance. Compared to other similar products in the market, Steelweld Enviro Products offer exceptional value for money.

CALL US TODAY TO FIND OUT MORE!



Steelweld Rotary AST 1500



Steelweld Strobe ECS 1500 – Eddy Current Separator

STEELWELD ENVIRO PRODUCTS LTD

3 Ballyreagh Business Park

Sandholes Road

Cookstown, BT80 9AR

T: 028 867 66495 E: sales@steelweld-enviro.com



www.steelweld-enviro.com



Made in the UK

EDGE Innovate, a County Tyrone based heavy equipment manufacturer that serves the quarrying and recycling industries has been named as "Exporter of the year" at the recent Insider Media's "Made in the UK" awards. EDGE Innovate made the shortlist of companies after picking up the "Made in NI" Exporter award at a ceremony held at the iconic Europa Hotel, Belfast on the 12th May 2017. The Exporter award is awarded to manufacturing companies based in United Kingdom that are deemed by the judges to be the best exporter, in terms of both international presence and percentage of total sales of products in the region. The judging panel were impressed with the scale of ambition that EDGE Innovate has shown in its exporting strategies and its ability to take its products into challenging markets through a network of global distributors. The judges described the company as agile with a clear vision, and said exporting was in its DNA.

Established in 2009, EDGE Innovate design, manufacture and export world leading; material handling and recycling equipment throughout the world. Operating from their 150,000ft², state of the art, manufacturing facility, EDGE Innovate have quickly gained a competitive foothold into the material handling and recycling sector by offering an extensive product range. With innovation being a core ethos of the business, EDGE Innovate are frequently bringing new products to the market to meet the ever-changing demands of their customer base. EDGE Innovate currently offer a total of 24 innovative products from their material handling and recycling ranges.

Exceptional growth in exports for EDGE has been facilitated mainly by the introduction of their diverse recycling range launched in 2014. Currently exporting to 49 countries throughout the world, EDGE Innovate have unlocked a number



of new markets over the past 12 months. In addition to this success, an increase demand for EDGE products in already established markets such as Australia, USA and Europe and see export figures rising. Turnover figures for the family run engineering firm have increased by 57% over the past 12 months.

To meet these growing demands on the business, EDGE Innovate has launched an ambitious 2020 strategic business strategy. Plans are in place for the upgrading and expansion of their existing assembly production facilities along with a new Customer Welcome Centre to house their ever expanding sales, marketing and aftersales departments, new staff welfare facilities, a Research and Development unit along with a new Quality Control Centre at their Dungannon headquarters. The new, improved, larger manufacturing facilities and office space will enable EDGE Innovate to increase its production capacity and allow for the introduction of new production lines for the latest product innovations in an efficient manner. To support the rising demand for the EDGE brand of equipment and to minimise lead time; EDGE Innovate have expanded their workforce within their Dungannon headquarters by 15% with further plans for future expansion of their workforce in 2017.



www.hub-4.com/directory/11401



Innovative solutions
for level measurement detection

NivoRadar® 3000
Modern radar sensor

- ✓ 78 GHz technology
- ✓ 4° beam angle
- ✓ Optimum reflection
- ✓ Aiming flange up to 10°
- ✓ Corrosion resistance



Housing

- Lid with viewing window:
Display of level measurement & diagnostic data
- Stainless steel 316L with protection class IP 68

Air-purging connection

- Integrated lens cleaner
- Functional reliability even if the material is prone to caking or used in areas with high condensation

Program module

- Plug-in-Display for programming and diagnostics
- Quickstart-Assistant



UWT (UK) Ltd • sales@uwtuk.com • 01743 718883 • www.uwtuk.com

www.uwtuk.com/nivoradar

TEREX|FINLAY rock Edinburgh, Scotland, with spectacular model launches at customer open days event

Terex|Finlay, hosted an international open day in Edinburgh, Scotland, on Thursday 15th and Friday 16th June, 2017. The event had a very international feel with dealers and end-user customers in attendance from North and South America, Europe, Russia, Japan and South Africa.

The full machine line and demonstrations were structured as follows:

Demonstration area 1

The headline act featured the NEW J-1160 jaw crusher, C-1540 cone crusher and NEW 684 3-deck prototype working in a train.

Demonstration area 2

Featured the NEW J-1170 (direct drive) jaw crusher working alongside our recently launched TC-80 tracked conveyor.

Demonstration area 3

Featured the Terex|Finlay 883+ Spaleck recycling screen working in a contaminated and sticky soil application.

Demonstration area 4

Featured the recently launched Terex|Finlay I-140 impact crusher working in a C&D recycling application.

Demonstration area 5

Featured the NEW I-120RS impact crusher with recently launched 674 inclined screen working in a C&D recycling application.

In addition to the working machine displays the following machines were also on static display: 863 & 883+ heavy duty scalpers, 595 heavy duty grid, 693+ inclined screen, J-960 Jaw Crusher, J-1170 Jaw Crusher and C-1545 Cone Crusher.

Nigel Irvine, Sales Director, commented on the event: "It was a huge pleasure to welcome so many international dealers and end-user customers to yet another successful Terex|Finlay open day. Innovation is at the heart of Terex|Finlay mission and vision. We've had yet another busy year of new product developments and its gratifying to receive such positive feedback on our efforts. We place a lot of emphasis on listening to what our customers' tell us

they want and need from their equipment day in day out and judging by the feedback that we have received on the new product launches we are definitely on the right track with our new product development initiatives. To our hosts, Alex and Scott Brewster, "We owe you a huge debt of gratitude! Working with you was a pleasure from start to finish, and we feel so honoured to have had access to such a great site. Thank you for making our open days, the success of the event was in large part due to you guys and your committed colleagues!"



The event and product demonstration were hosted by Alex Brewster & Sons, Craigpark Quarry, Edinburgh. At the event Terex|Finlay unveiled 3 brand new models; J-1160 & J-1170 (direct drive) jaw crushers and I-120RS impact crusher. In addition of the prototype model 684 3-deck inclined screener that will be launched in Q4, 2017, was also showcased.

The onsite demonstrations featured nine Terex|Finlay machines in five working demonstration zones as well as nine machines on static display.



The new machines launched or previewed at the Open Day...

Terex|Finlay J-1170 (direct drive) jaw crusher

The new Terex Finlay J-1170DD builds on the legacy created by the original J-1170 Jaw Crusher. We have taken all the great features from the original machine and added additional features. The direct drive arrangement between the powerunit and chamber enables operators to maximise fuel economy. On site comparisons have been completed with excellent results achieved so far. To further reduce fuel consumption we have installed an efficient load sensing Danfoss PVG hydraulic system. This ensures only the oil that is required is utilised.

Key features:

- Robust proven Terex 1100mm x 700mm jaw crusher for high capacity and large reduction ratios in quarrying, mining, demolition and recycling applications.
- Optional hydraulic release for demolition and recycling applications.
- Compact dimensions and quick set-up make the J-1170 the optimum solution for contract crushing as well as demanding input applications.
- Direct drive jaw chamber fitted with an unblock feature that maximizes uptime.
- Hydraulically assisted closed side setting adjustment minimizes downtime and offers quick adjustment.

Terex|Finlay J-1160 jaw crusher

The NEW Terex|Finlay J-1160 jaw crusher builds upon the success of its predecessor. We have integrated the proven and aggressive Terex 1000 x 600mm (40" x 24") jaw chamber onto the plant. The chamber is driven by a Bosch Rexroth hydrostatic system for variable speed and functionality of being able to crush in reverse in certain applications such as recycling 'black top' and C&D waste.

Key features:

- New model is more recycle application friendly with increasing clearances under the crusher and improved main conveyor design to reduce snagging of rebar.
- Machine transport is improved upon. The machine weight is sub 36,000kgs (80,000lbs) which requires either no or a lower class of permit in certain countries.
- High powered hydrostatic drive ensures precise chamber controls and reverse functionality for clearing blockages and assisting in demolition and recycling applications.
- Fully hydraulic adjustable closed side setting minimises downtime and offers quick adjustment.



Terex|Finlay I-120RS impact crusher

The NEW Terex|Finlay I-120RS impact crusher has been developed to replace our current I-110RS model. As a response to market led feedback we have integrated the enhanced material flow process through the plant that was initially proven in our recently introduced I-140 and I-140RS models. We have proven increased productivity from the plant through extensive field testing in a range of recycling and mineral processing applications.

Key features:

- The ease of material flow through the machine has greatly improved with each component of the machine increasing in width as the material moves through the machine.
- Fully hydraulic apron setting assist provides convenient and efficient adjustment of the aprons
- Heavy duty vibrating feeder (VGF) with integrated prescreen removes dirt fines and sizes bypass material for reprocessing.
- Quick on-board detachable recirculating system including large 3.66m x 1.53m (12' x 5') two deck screen.
- Recirculating conveyor can be rotated from closed loop configuration or utilized for stockpiling making an additional oversized product.

Terex|Finlay 684 inclined screen

The second generation new Terex Finlay 684 screener has been designed with the customer and operator in mind, there are a number of important design updates that set this machine apart from its predecessor. For ease of onsite movement and rapid setup and tear down times the overall machine and conveyor folding design has been simplified and reconfigured to give rapid on site deployment. We have retained the original screenbox that features three large 4.3 x 1.7m (14' x 5' 7") inclined screens giving a large screening area of 236 square ft to provide efficient screening and high capacity.

Key features:

- Triple deck 4.3m x 1.7m (14' x 5' 7") screen with full catwalk access.
- The fourth (oversize plus) conveyor provides variable tilt and slide slew capability to accurately discharge materials for recirculation to crushers or for stockpiling.
- Maximum utilisation of three 4.3m x 1.7m (14' x 5' 7") decks provides ultra-efficient screening capabilities even at small aggregate sizes.
- A combination of quick wedge tensioning, convenient access holes and hydraulic tensioning on the bottom deck ensure mesh set up and change out times are kept to an absolute minimum.



WASTE RECYCLING SOLUTIONS

EQUIPMENT SALES | HIRE | LEASING

SHREDDERS



Slow, Medium and High speed shredders available to suit most waste streams.

WASTE HANDLERS



A range of waste handling equipment is available, including material handlers and wheel loaders. All come with a variety of attachments. Long and short term hire.

WINDSHIFTERS



Remove contaminants with our range of hook loader or tracked density separators.

RECYCLING SCREENS



A variety of trommel, star & vibrating screens to size materials and separate fines.

EDDY CURRENTS



Eddy current separators for the recovery of valuable metal fractions.



Warwick Ward

01226 747260
warwick-ward.com

We are an award winning UK dealer for the following brands:



TEREX



ECOTEC

CASE
CONSTRUCTION



ECOHOG^{hd}
HUNGRY FOR WASTE



COME AND SEE US ON STAND 5T111

RWM

Building a resource
efficient future

IN PARTNERSHIP WITH CIWM

Opportunities for recyclers at



RWM

Building a resource efficient future



Bigger, better and more collaborative, the UK's premier event dedicated to Energy, Water, Recycling, Renewables and Waste Management is the 2017 knowledge-sharing hub for resource management professionals, with a wealth of

machinery and equipment innovations on show. RWM Event director Nicola Meadows previews the show.

Major innovators in the recycling machinery and equipment sectors will be showcasing their latest equipment at RWM 2017, running from 12-14 September, 2017, at Birmingham's NEC in partnership with the Chartered Institution of Wastes Management (CIWM). As well as the latest machinery for recycling and reprocessing materials, new technology and ideas will also be showcased in the fields of telematics, fuel efficiency, safety and training sectors among many others, with a myriad of networking opportunities to boot.

Decision-makers in the resource management sector negotiate with a wide range of overlapping industries, suppliers and government agencies, both local and central. As such, it is crucial to be up-to-date with the opportunities and commercial issues affecting resource management, recycling and bulk materials handling.

One Planet Living

The umbrella concept is RWM's One Planet Living mission, which champions the better management and supply of the world's resources in an increasingly interconnected world. Divided into six zones – Supply & Demand; Energy from Waste;

Recyclers & Reprocessors; Handling & Logistics; Data, Tech & Services; and Machinery & Equipment – the show will also feature an Innovation Hub, where exhibitors and start-up companies showcase the latest, most innovative ideas in the market.

The Machinery & Equipment zone will display the latest technology in the shredding, sorting and compacting of material, boasting new exhibitor A & C Weber, and returning exhibitors including Eriez, Bunting Magnetics, Durwen and Fairport Containers. The latest technology in lifting, sorting, shredding, baling and compacting will be showcased, and visitors to this zone typically come from a wide range of backgrounds, including skip yards, waste transfer stations, full MRF sites and waste management companies.

And the Recyclers & Reprocessors zone boasts a tight focus on companies that specialise in the innovative handling of waste with the goal of diverting it from landfill, and ensuring that as much value as possible is extracted. New exhibitors for 2017 include Tomra Sorting, and returning exhibitors include AMCS. The RWM Connects service, which allows both visitors and exhibitors to network and do business, and the CIWM Clinic are also based in this zone.

In the Handling & Logistics zone, innovations in the transportation of commercial or construction waste will be highlighted, with new exhibitors including E Power Trucks, and returning exhibitors including Dennis Eagle, Iveco, Scarab Sweepers and Smartlift. This zone will also host a new theatre seminar for Municipal & Material recovery. Visitors will have the opportunity to inspect the latest refuse vehicles, sweepers and skip loaders. They can also test them out first hand in the Ride & Drive area.

The 2017 Floorplan



Map not to scale and accurate at time of design.

Meanwhile, the Energy from Waste zone will showcase one of the fastest-growing and most dynamic sectors in waste management. New exhibitors for this zone include China Tianying, while returning exhibitors include Babcock & Wilcox Vølund.

Two new zones for 2017 are Supply & Demand – which is the home for networking, learning and business opportunities in the UK energy and water markets – and Data, Tech & Services – which covers smart, practical software solutions to modern and future logistical challenges, with a focus on quality data and supporting services.

New exhibitors already signed up for the Data, Tech & Services zone include BeNomad, while Increase Computers is returning to the 2017 event. New exhibitors for the Supply & Demand zone include Phoenix Contact, with returning exhibitors from the Energy Show including Source for Business.

The Innovation Hub, meanwhile, will be a pavilion where exhibitors and start-up companies showcase the latest, most innovative ideas in the market. The Innovation Hub will be managed in association with InnovateUK to bring the energy, waste, recycling, water and renewables industries latest and best innovations to RWM 2017. Innovate UK is an executive non-departmental public body, sponsored by the Department for Business, Energy & Industrial Strategy.

Visitor trails

The new-look RWM 2017 will also offer four visitor discovery

trails identifying key exhibitors for audiences looking for a specific service, or a more organised experience. For instance, visitors can navigate the exhibition by exploring the Energy Solutions trail, designed for visitors looking for energy suppliers, energy efficiency, and energy technology; or the Water Marketplace trail, which guides visitors looking for water suppliers and management services.

The Local Authority Solutions trail has been designed to highlight all exhibitors and content relevant to those responsible for waste management and resource, legislative issues and fleet management; while the Exhibitor Discovery trail will allow visitors to discover the latest exhibitors and suppliers that have joined the RWM community.

Event features

As well as a return of the outside area at the 2017 show, key features at the event include RWM Connects, a complimentary matchmaking service hosted in the Recyclers & Reprocessors zone allowing exhibitors and visitors to use our database to arrange meetings prior to the show. Meetings can be on exhibitor stands or at the RWM Connects Lounge, and the RWM Connects team can also help facilitate introductions with new business partners if desired.

Meanwhile, the CIWM Resource and Waste Clinic will see industry experts on-hand over the course of the show offering advice and insight. Visitors can book to have a one-to-one chat with one or more experts, who collectively offer wide and in-depth knowledge on a range of resource and waste

management subjects, and are mainly CIWM Fellows. Booking isn't essential, and CIWM staff will be on-hand to direct ad-hoc meeting requests at the show to the most suitable experts.

And the UK's Department for International Trade (DIT) is returning to RWM 2017 to offer visitors and exhibitors the opportunity to gain insight and advice about exporting products and internationalising their business. On-site advice will be available at the show from the DIT's expert team of international trade advisers, who specialise in the energy and waste sectors, in Hall 4, stand A120-B120.

There will also be the opportunity to have some fun at RWM 2017 by making use of the four-hole Pitch & Put crazy golf course and bar at the back of Hall Five, sponsored by Adtrak. It's a great way to network in a relaxed setting away from the hubbub of the main show.

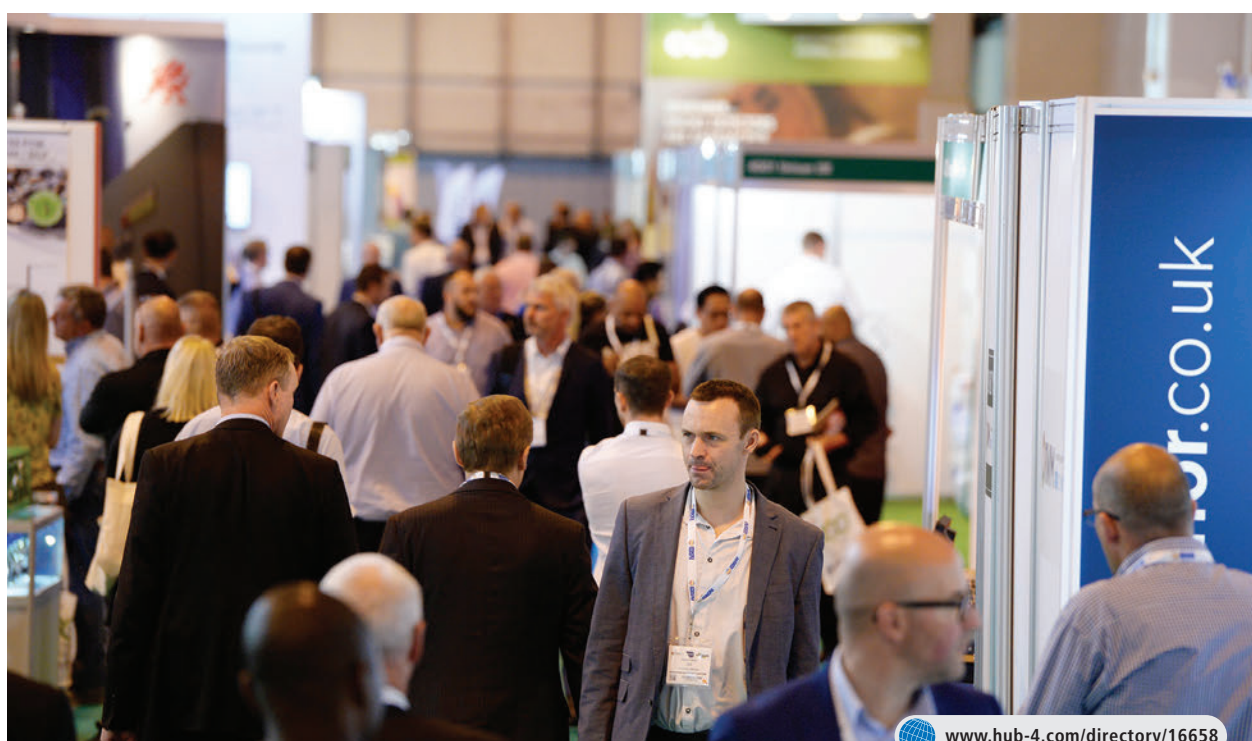
For more information about RWM 2017, including registration, please visit: www.rwmexhibition.com

Theatre seminar sessions

A wealth of knowledge sharing and networking opportunities will also be present during the daily seminar theatre sessions running in each event zone throughout the show:

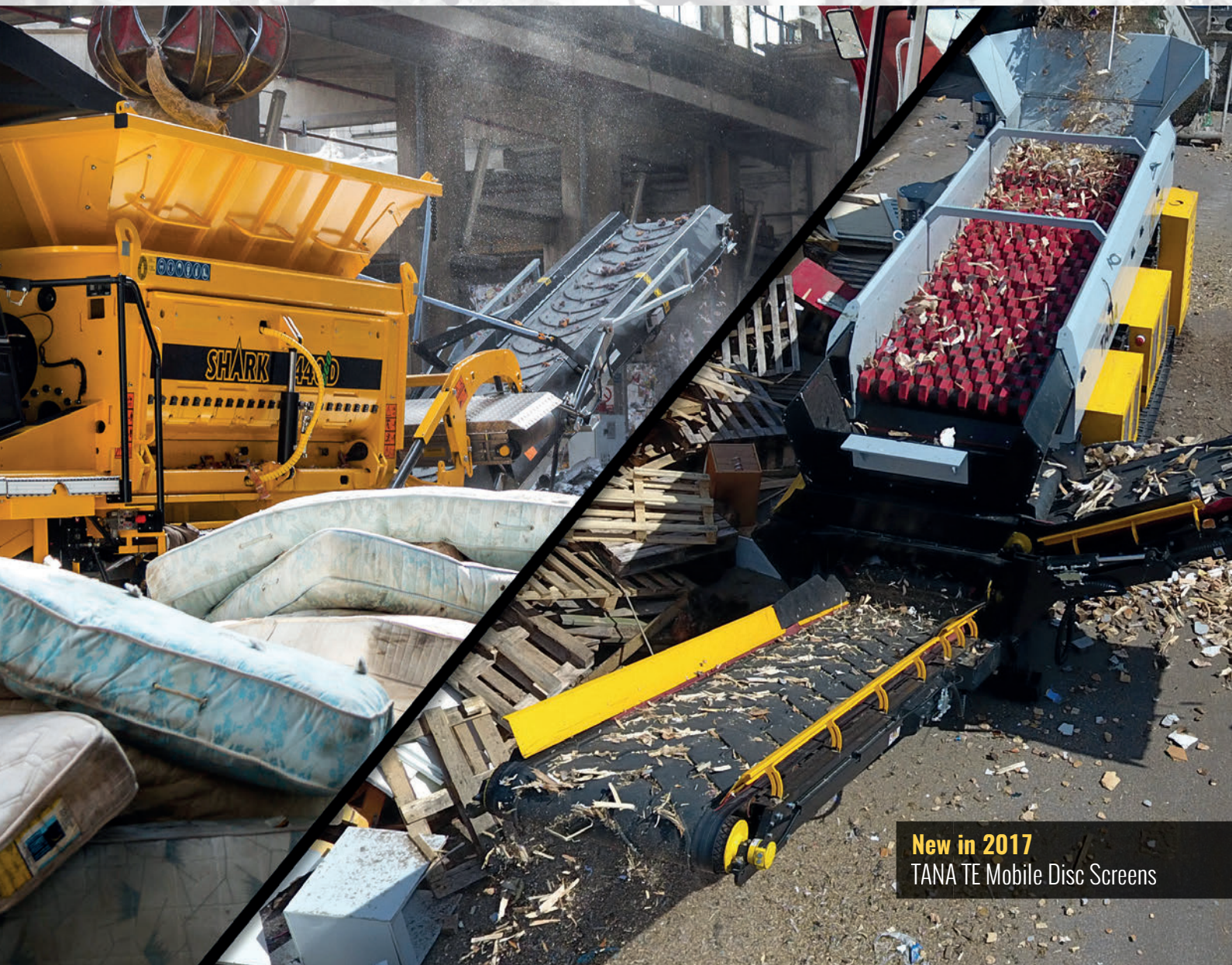
- Utilities Keynote Theatre: The platform for UK energy and water leaders to share their insights into the latest industry developments. Topics to be debated across the three-day event include energy supply, pricing, energy storage, renewable innovations, water deregulation and future visions. These resources are about far more than just a cost, and correct management can be a source of value, resilience and real competitive advantage.
- Utilities in Practice Theatre: This case study-led seminar programme seeks to support visitors with practical, peer-led insight into how to drive efficiency, create value and deliver compliant water, energy and renewables services. Find out what best practice looks like, and where new commercial opportunities lie that your company could stand to benefit from.
- Circular Economy Theatre: Focusing on how the principles of circular economy can be applied to maximise value and the sustainable use of resources. The world's cities generate 1.3 billion tonnes of waste per year and this is expected to rise to 2.2 billion tonnes by 2025. These wastes pose a growing risk to human health, air and water quality, and are an increasing source of greenhouse gas emissions. But effective waste and resources management is an opportunity for economies to re-invent themselves, to mine society's wastes and close materials and utilities loops on all fronts.
- Energy from Waste Theatre: Sharing best practice, technological advances, and changes to the global political and economic landscapes which impact this evolving sector, which has not always had favourable perceptions in the media and public eye. New commercial prospects for EfW will be assessed, together with what could constitute barriers to the growth of the industry within the UK and wider global market. Other prospects such as the opportunities in a decarbonising economy, and what impact an increase in recycling rates will have on future EfW feedstocks, will also come under the spotlight.
- Municipal and Materials Recovery Theatre: The platform for resource and waste industry experts from both the public and private sector to come together and discuss creative techniques to drive recycling rates. From the effective management and commercialisation of food waste to tackling waste crime, and rethinking revenue streams from recycling, seminar sessions in this theatre are set to see exciting debates over the three-day show.

For more information about the theatre seminars including specific session and speaker details, please visit: www.rwmexhibition.com



www.hub-4.com/directory/16658

UNRIVALED VERSATILITY. FROM WASTE TO VALUE.



New in 2017
TANA TE Mobile Disc Screens

Tana will be exhibiting at

The RWM Expo 2017 @ NEC Birmingham, 12-14th September 2017.

Exhibition hall 5 stand 12, Next to the visitor Entrance.

Come by to find out more about TANA's latest line up of mobile recycling technology!

TANA
TANA RECYCLING MACHINERY (UK) LTD

RWM
Building a resource
efficient future
IN PARTNERSHIP WITH CIWM

www.tanauk.com | www.tanarecycling.com | www.rwmexhibition.com

Tana provides business opportunities for waste management professionals

TANA RECYCLING MACHINERY (UK) Ltd are celebrating our first-year trading as the TANA representative here in the UK and would like to thank all our existing and new customers for choosing TANA.

During this first-year we have been able to introduce many new customers to the TANA brand; whilst still offering our existing customer the servicing, parts, specialist knowledge and back-up support you would expect from one of the leading names in waste machinery. The TANA Machines can bring a wealth of benefits to the end users and provide the customer with a solid platform for their waste processing.



Whether this be our unique Landfill Compactor with two full width drums which still plays a key role in the product portfolio or recycling machinery including TANA SHARK slow speed shredder, TANA 6Deco Drumscreen and the NEW TE DISC-SCREEN which are becoming more and more important. This is a natural reflection of the ongoing development and trends of solid waste treatment. Tana is a pioneer of using electrical control systems and applying IT applications in its products. In fact, it is the first manufacturer equipping its shredders with an onboard scaling system.

TANA SHARK waste shredder is the most versatile shredder on the market. Versatility in Tana's case does not only mean the ability to shred a wide variety of different waste streams. Tana is especially strong in shredding materials that are typically seen as difficult, abrasive or impossible even, e.g. mattresses,



tyres, shingles (roofing materials), ragger wire. Versatility also means the ability to produce the wanted particle size with the one and same machine. Pre-shredder producing big volumes can easily be tuned to producing RDF, i.e. 80 mm particle size by putting a rotor screen underneath the rotor.

In addition to the TANA SHARK shredder there is the 6Deco Drumscreen in the offering. It is like any other drum screen, except for the state-of-the-art control system with remote access and the scaling system on the conveyors showing the output of the oversize and fines.

2017 addition to the product family is the TANA TE mobile disc screen manufactured by Ecostar for Tana.

Tana's headquarter is based in Finland and the products are sold all over the world through a network of independent distributors. Tana holds a 20% share of the landfill compactor markets, being a market leader in several countries. Tana launched its TANA Shark product line of slow-speed waste shredders in 2006 and has managed to reach an impressive position in such a brief period of time. Over 90 % of the company's turnover comes from export.

For more information please visit www.tana.fi or contact Shaun Walker:

TANA RECYCLING MACHINERY UK shaun.walker@tanauk.com
01302 872431 / 07564525391



www.hub-4.com/directory/17664



Premium crusher parts

by the leading crusher service provider



The Genuine Alternative



www.cmscepcor.com



Brexit and the Irish Sea help to increase turnover at Ulster Shredders



Amongst other factors, the weak pound and the need to maximise commodity transportation efficiency have helped boost sales at Ulster Shredders.

Exports have increased with recent machinery sales to the Irish Republic, South Africa, Finland, Switzerland and Sweden. Many of these sales are to new clients and markets who have come to recognise the commercial advantage in purchasing from the UK at the current exchange rate. The vast majority of Ulster Shredders' sales are still going into the confidential destruction and volume reduction sectors both locally and overseas.

Locally USEL, a Belfast based supported employment and learning enterprise providing paid employment for people with disabilities and health related conditions, realised that

shipping clean mattress springs whole was not the best way of getting the maximum value from this important steel commodity as a full truck load only weighed a few tonnes. By Shredding the springs down in their new U-45 Ulster Shredder they are now able to gain full potential from their costly freight expenditure.

Just one example of how Ulster Shredders' range of machines can be used to increase efficiency and profit margins in this current competitive trading climate.

Contact: info@ulstershredders.com www.ulstershredders.com
+44 (0) 28 7965 0050

Local manufacturers of slow speed, high torque Shredding machines.



www.hub-4.com/directory/8792

Everything ready for the 10th

steinexpo 2017

10th International Demonstration Show
for the Construction Materials Industry



This 10th anniversary steinExpo is entering its hectic phase with a growth rate of more than 10 per cent in exhibitors and brand presence compared to the previous event. 275 exhibitors with 416 trademarks had registered at the end of June. Apart from a few isolated areas, this largest demonstration exhibition of the raw and building materials industry on the European mainland is fully booked. The interest of international exhibitors, whose participation grew to 72 and which corresponds to a significant increase, is particularly surprising. Taking all the participants into account, the international exhibitors thus account for more than 25 per cent of participation in the trade fair.

Trade fair director Dr. Friedhelm Rese and trade fair business unit manager Andrea Friedrich are especially pleased about the increased participation by international exhibitors. This again shows how committed professional partners, including the European Aggregates Association (UEPG), are in their involvement in the development of the steinexpo. The participation of companies from New Zealand or China is also due to the fact that trade visitors to the previous events have spread the reputation of the "live" trade fair across continental borders.

With regard to the success in the participation of national exhibitors, the creators of the exhibition also expressly acknowledge the positive aspects resulting from the tried and tested cooperation with organisations and multipliers such as the German Association of Mineral Resources, MIRO, the relevant trade associations at the Association of German Machinery and Plant Manufacturing, VDMA, and the German Association for Construction Industry Engineers and Professionals, VDBUM.

All in all, the demonstration exhibition enjoys a very positive development, which is associated with high expectations. To not disappoint these expectations, the organisers have committed themselves to steinexpo 2017 in late summer.

More action and better insights

The trade fair (date: 30 August to 2 September) again has 180,000 m² of total surface area to its disposal in the MHI stone quarry in Nieder-Ofleiden, which provides more than 15 per cent additional net exhibition space compared to 2014 with some skilful planning.

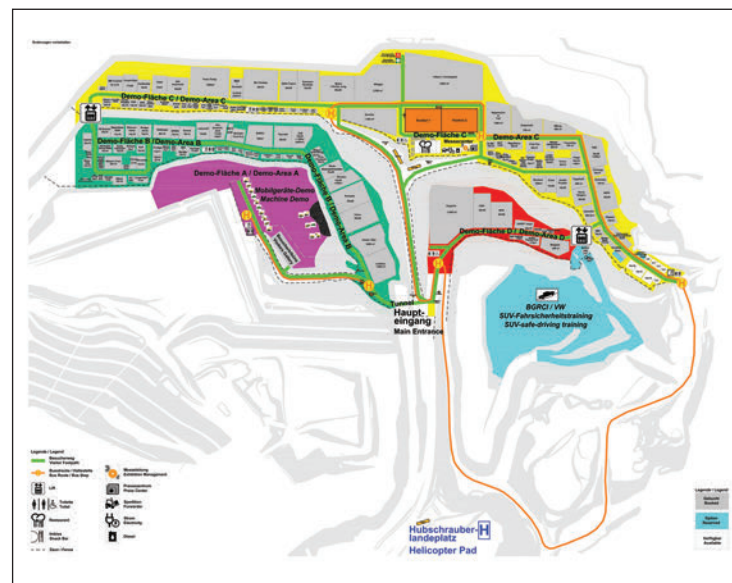
Together with the technical planning team of the TU Clausthal, the organisers will once again provide new stimuli for a lively trade fair experience. In the joint demo on area A, visitors can observe 23 large machines with a weight of up to 130 tons at "work" from a 250-seat spectators' stand. Over the course of the trade fair, the mobile equipment used here will demonstrate perfectly combined charging and transport processes in a total of 101 real-life demonstrations. There will be a caterpillar presentation for the first time and the use of other special equipment is also fitted into the tight schedule.

In addition to the moderated demo area that includes trademarks across the spectrum, which can be viewed from the spectators' stand, a special non-moderated area is also prepared on level A. Here, various exhibitors will host individual demonstrations of their equipment in the excavated material after prior announcement. If you are interested in a particular brand, you can use this new service as a visitor in consultation with the participating exhibitors.

In addition, the individual demonstrations of mobile equipment, treatment plants and accessory equipment, which

are typical to steinexpo, are demonstrated at various other stands in all exhibition areas. Everything around construction machinery is shown on demo area B, while the processing technology is grouped together on area C. The demonstrations follow a user-friendly interrelated schedule. To be in the right place at the right time and to actually see the more than 500 large-scale machines in operation, it is worth taking a look at the demo information in the trade fair catalogue. Two lifts contribute to "doing the rounds" in a more relaxed manner.

Pavilion exhibitors once again benefit from the "open concept" of the large tent halls, which have proven themselves for the first time in 2014, improving the integration of the rather "static" range of products from accessory suppliers and service providers into the vibrant demo environment.



European and world premieres announced

The technical planning team, chaired by Prof. Hossein Tudeszki and Thomas Hardebusch from the TU Clausthal, will as usual continue the work and provide the necessary support for exhibitor requests for the setting up and demonstration of machinery. As usual, the trade fair has received a lot of support from the MHI as the quarry operator.

For their part, the exhibitors are planning excellent demonstrations and are announcing a growing number of relaunches, as well as European and even world premieres in their exhibits. The mostly standard machine sizes in Germany are joined by some construction machine giants that few people have the opportunity to experience every day.



Thinking together into the future

Using the fascination of the steinexpo to target young people is an absolute must. For this reason, the trade fair team has strongly promoted the success of the campaign for technically interested pupils under the heading "ThinkBig", already known from the bauma, in close co-operation with the VDMA and supported by the Federal Association of German Engineers (MIRO) – and this with success. More than 600 students from grades 8 to 12 had already registered by the end of June.

In addition, visits by whole vocational school classes have been announced. And how enthusiastic especially young people are about the steinexpo is reflected in the increasing frequency of visits to the steinexpo Facebook page by this group. The common goal of all steinexpo network partners is to present the whole industry as attractive to young people as it is. The shovel-and-hammer image of a quarry is noticeably replaced by the much more correct image of a team-led, interesting and modern working environment.

The creators of the steinexpo are also looking to the future in terms of their own development. This is reflected, for example, in the new online ticket system for the trade fair, the increased social media activities, and also in the new helicopter shuttle service to Frankfurt Airport, especially to provide international trade fair visitors with a comfortable transfer service after long travel time.

www.steinexpo.de



The new dimension in payload management

Exhibiting for the first time this year at Steinexpo is Kiwi based company Loadscan, showcasing the newest technology in payload management.

The Loadscan Load Volume Scanner (LVS) system is based on laser scanning technology combined with software that creates 3D model images of trucks to measure the exact volume of the material loaded in a truck or trailer bin.

range of power options, plus the ability to transmit truck measurement load reports via Wi-Fi, Cellular Modem or Network cable. Loadscan is the inventor and first to launch the mobile truck measurement unit into the global market place which has made it possible to measure and monitor loads in temporary locations that were previously going unmeasured.



Loadscan will be exhibiting its LVS-3TMM with extended outrigger for measuring up to 50T articulated dumpers and underground mining trucks and the LoadTrak in-cab console for automated load data logging.

The LVS by Loadscan was the first in the world to gain Trade Approval for volumetric measurement of material loaded into open bodied bins and now boasts Trade Approval in two countries (New Zealand and Australia).

Loadscan is rapidly gaining recognition in the civil construction, quarrying and bark products industries. Now, Loadscan has exports to Canada, USA, Australia, Mexico, Mongolia, the Democratic Republic of Congo, Russia, Senegal, Zambia, Switzerland, Germany, the Philippines and Indonesia.

Since initial development the LVS format has been extended to include portable, semi-portable and fixed gantry models. The range of measurable load materials and truck types has been extended. LVS devices are successfully operated on a full spectrum of truck and trailer designs including on-road truck and trailer units, semi-trailers and centre-dumpers, as well as off-road articulated dumpers and quarry trucks.

The range finder lasers used in the LVS system are of the highest quality on the market and are the only lasers available that pass the stringent metrological and accuracy testing required for Trade Approval.

Cutting edge volume scanning solutions

The LVS-3TMM is a fully self-contained mobile truck measurement unit that can be driven to a site and be fully setup and operational in as little as 45 minutes. There are a

Some of the key aspects and functionality of the LVS include:

- Proven accuracy of +/- 1% on all truck types and configurations.
- Smart LVS software with a range of checks and balances written into the LVS software so that the scanner does not report inaccurate reading if it cannot obtain one from the collected scan data.
- Automated scanning and RFID for truck recognition so the trucks do not need to stop.
- Fast computations of the measurement records.
- Non-contact for low maintenance.
- Load data collection by manual input or auto fill.
- Convert volume, cubic meters/cubic yards, to weight.
- Portable, simple to set up and easy to use.

A custom solution tailored to your site requirements

Tracking truck-loads of valuable material around your mine site can be a nightmare of paperwork or complicated and expensive dispatch systems. LoadTrak, rugged in-cab consoles, are a customisable, value-



adding, remote data entry and feedback option for your LoadScan LVS that can replace paper (Plods) load records without over-complicating things.

Rugged mining-proof touchscreen consoles with built-in wireless (WiFi) connectivity allow truck drivers to enter load details such as load source, load type, destination and so on at the time of loading. When loaded trucks come within WiFi range of the LVS system the load details are automatically uploaded and recorded along with the load measurements. All load details are available for analysis and reporting with Loadscan's Overview load management software and can be easily integrated into in-house management software. The measurement result is also displayed immediately on the LoadTrak console for the drivers information. 3D images of every load can be viewed and analysed on the Overview reporting software allowing for loader operator training to ensure maximum load opportunity with the minimum of haul cycles.

SEE US AT

steinexpo
STAND 59 2017



www.hub-4.com/directory/17810



Accurate Measurements

Loadscan recently supplied a Load Volume Scanner (LVS) to Rodney Aggregates Supplies Limited – Whangaripo Quarry, in Whangaripo, New Zealand.

The LVS was used to assist them to accurately measure the removal of 150,000m³ of overburden.

Edward's Plant Hire was contracted to remove the overburden from the quarry and relocate this off site using 40T Articulated Dumpers.

It was past discrepancies between surveyed quantities and actual payload volumes that sparked both parties' interest and agreement to use the LVS technology.

RFID for Automatic Truck Identification

With the LVS system being a totally automated measurement system using laser range finders and Tagmaster RFID tags for automatic truck identification, the trucks simply drive under the LVS scan head to obtain an accurate load measurement complete with a time and date stamp for each load.

The trucks were measured out with full loads and measured again on return to account for the haul back material that was stuck in the trays.

The haul back quantity was removed from the outbound load total and equated to 9987m³, 5.7% of the total volume measured.

Now the LVS system is their primary payload measurement solution and both parties recommend it, stating that it is "easy to set up, easy to use and it's accurate and honest!" "Alleviating any disagreements around payload volumes". A big plus for both businesses.

"The truck drivers are also on board, it tells them exactly what they need to do and when or if there are any issues".

Improved Efficiency

Not only has the LVS system improved efficiency of the whole operation, removing any necessity for interim surveys and allowing the project to flow more smoothly but it has also been beneficial for management's reporting requirements. The LVS provides up to the minute load details at the touch of a button and monthly reports of m³ moved can be used to reconcile payments to the contractor. The Load Volume Scanner also assists with complying with health and safety requirements, providing the ability to track truck start times and hours on site, all of which has led to the saving of a lot of valuable time and money.



FLEXIBILITY MEETS PRECISION.

THE NEW EVO SCREENING PLANTS



**MOBISCREEN
EVO**

MOBILE SCREENING PLANTS

MOBISCREEN EVO MS 702 | MS 703 | MS 952 | MS 953

HIGH FLEXIBILITY AND FIRST CLASS SCREENING RESULTS. The new MOBISCREEN MS EVO screening plants are characterised by high application versatility, excellent transport characteristics and fast set-up times. Precise results with a very wide variety of feed materials and low consumption are guaranteed – where flexibility meets precision. The efficient MS EVOs thus impress with top performance values across the board.

 www.kleemann.info

Smiley Monroe return to Steinexpo 2017



Following unprecedented success at ConExpo/Con-Agg (Las Vegas), Smiley Monroe is excited to be returning to Germany for SteinExpo 2017. Since our last German show, Bauma (2016), the company has continued to grow in the region. To satisfy customer demand, Smiley Monroe has just invested in building a new production centre in Northern Ireland, to provide 1000sqm of additional manufacturing space, dedicated to Custom Rubber Parts. A new, state-of-the-art waterjet cutter has been installed allowing us to cut with breath-taking precision, thicker and harder materials.

At SteinExpo, we'll be announcing our European expansion plans by rolling out our successful 'Just-In-Time' delivery model in the region to be closer to our customers.

Experience the Giants of Belting

As well as an introduction to Smiley Monroe's core products – Endless Conveyor Belts and Custom Rubber Parts - visitors can expect to meet the legendary 'Giant of Belting' sculpture, inspired by the Irish legend of Finn McCool and the Giant's Causeway coastal rock formation. As always, our applications

experts and experienced problem-solving engineers will be on hand to discuss how Smiley Monroe's products can make a difference in the German market, using not only physical, but virtual displays such as 3D product animations and a virtual reality (VR) experience. We encourage all our visitors to slip on the VR headset, immerse themselves in our world, where they'll learn more about our full range of products for mobile equipment including our new 'Special' Hot Moulded Belts, Zip Clip™, King Roller™ Glide Tracker™ and Wear Liners.

What's New?

Smiley Monroe will be launching Cold Bond™ at SteinExpo – a new type of cold vulcanising adhesive with a safer organic compound, suitable for use in mining and underground applications. The two-part vulcanising adhesive with activator is designed for conveyor belt splicing, bonding rubber to rubber & bonding rubber to metal.

Smiley Monroe is the global market leader in the production of Endless Conveyor Belts and Custom Rubber Parts for the mobile equipment manufacturing sector, serving OEMs in seven segments: crushing, screening, recycling, washing, bulk material handling, environmental and road construction.



www.hub-4.com/directory/5684

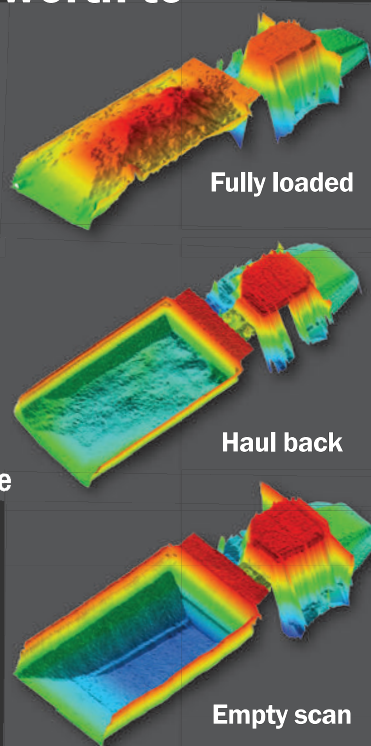
The NEW dimension in payload management

The only payload management system that delivers critical load measurement data in a single drive through scan.



What is a 15% increase in trucking factors worth to your company?

- 🎯 Drive-through volumetric measurement of every load (accurate to +/- 1%).
- 🎯 RFID automation identifies every truck & trailer scanned.
- 🎯 Load management software reports every detail of every load.
- 🎯 Use 3D load profiles to train loader operators and optimise trucking factors



LOADSCAN[®]
LOAD VOLUME SCANNERS

Loadscan™ Load Volume Scanners generate a remarkable return on investment. Visit our website for examples www.loadscan.com

To learn more about the Loadscan™ Load Management Solution and how it can streamline your operation, freephone 0800-184 4812 or email sales@loadscan.com



Loadscan.com //////////////////////////////////////

Arjes exhibits their new 'Impaktor 250' Stone Crusher at Steinexpo



ARJES focusses on primary slow-speed shredders, screens, sorting equipment, secondary hammer mill shredders to process materials such as waste wood, green waste, biomass, plastic, paper, domestic and industrial waste, metal scrap, car bodies, engines and more. The unique new machine, the ARJES Impaktor, launched 2016. A small, versatile crusher for concrete, concrete with reinforcement, tarmac, construction debris, that can additionally shred wood, roots, stems and even a car body. The machine is on tracks and weighs not more than 14.5 tons with throughputs of 70 – 110 tons per hour on the construction material side. Creating a product of approx. 2.4". ARJES innovative engineering ensures easy transport, commissioning and maintenance. Further information on this subject can be obtained at the Steinexpo, Stand C9, Open Air Area.

SEE US AT

steinexpo
Open Air Area
2017



www.hub-4.com/directory/15859



**30/8 to
2/9/2017**
(Wed to Sat)



Tickets online:
www.steinexpo.de/registrierung



**35315 Homberg/
Nieder-Ofleiden,
Germany**

Further information by:
Phone +49 7229 606-30, info@geoplanmbh.de



www.steinexpo.de

**GEOPLAN
GMBH**



Telestack to exhibit popular LF520 Revolution at forthcoming STEINEXPO

Global leader in the design and manufacture of mobile material handling equipment Telestack, look forward with great anticipation to exhibiting at the forthcoming SteinExpo which takes place from 30 August to 2 September in Homberg/ Neider-Ofleiden, Germany. Held in one of Europe's largest basalt quarries, Telestack will exhibit the LF520 Revolution - a highly popular unit across the globe. Co-exhibiting with their highly respected German dealers, C. Christophel GmbH and Jurgen Kolsch GmbH, visitors will be able to view the LF520 Revolution on Stand C27, Demo Area C.

Commenting on the forthcoming SteinExpo, Malachy Gribben Commercial Director stated, "Telestack look forward to exhibiting at SteinExpo in its tenth year. Germany is a key market for us and our products are well known, widely distributed and trusted. We have LF units across the globe that are used in a variety of applications from stockpiling crushed glass in Germany, bargeloading on an airport construction project in Japan, to a coal ash clean-up project in USA. The addition of the Revolution feature which allows the unit to turn 360°, has added to the flexibility and functionality of the unit. We continue to invest in our hopper feeder range and our portfolio of LF applications is by far the most varied and comprehensive among manufacturers of this type of

product and our units in the field are supported by experienced and reliable partners who understand their customer's business."

LF520 Revolution Hopper Feeder

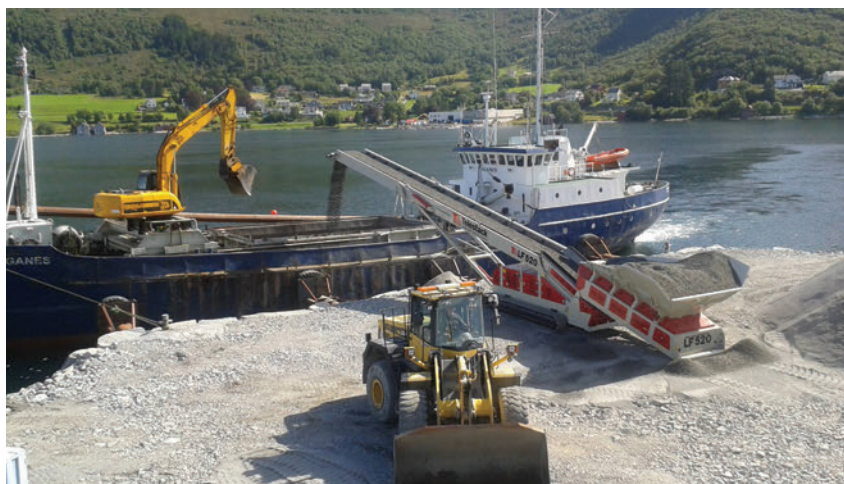
The LF520 Revolution Hopper Feeder is a track mounted fully mobile conveyor designed to work at production rates of up to 500tph (550 Ton per hr). Telestack's low feed, hopper feeder range is designed to be loaded directly from wheel loaders, grab cranes, excavators etc. feed auxiliary equipment, reclaim to other conveyors, directly load ships, trucks, rail wagons etc. Since the hopper feeder is track

mounted the unit has excellent mobility on site and will eliminate double handling of material, which reduces overall costs for operator.

The LF model also has a significantly lower feed in height compared to standard hopper feeders which allows for rear feeding which can be beneficial when operating in constrained areas. The range of standard machine types is available with boom lengths up to 24 metres or fully customised to suit the Client's specific application, feeding equipment and site conditions. The LF range has a generous hopper width and the heavy duty feeder has a full impact bed for aggressive application/large lump sizes which makes it the ideal design for being fed by loader and excavator.



LF514 displayed at Bauma 2016 which was sold to Zurcher in Germany – a large German rail infrastructure company who used the LF to load rail cars with railway ballast.



The LF520 in Norway used to stockpile in a quarry and then tracked to quayside to be used to load barges.

Padraig McDermott, one of Telestack's International Sales Manager for Germany continues "We had an LF514 at the Bauma exhibition in Munich last year which was sold to the large German rail infrastructure company Zurcher to load rail



3d Image of LF
Revolution loading
aggregates to rail
wagons from wheel
loader

cars with railway ballast and it generated great interest on the stand among people from a range of applications. Our ability to demonstrate the versatility of the LF has quickly given it a solid reputation. We have a customer in Norway who uses his LF520 to stockpile in his quarry and then tracks the LF520 to the quayside and uses the same unit to load barges. We have many who use it in warehouse applications simply because it is easier to feed as the loader is able to drive straight in and tip. The addition of the Revolution feature has only added to the flexibility of the unit and its improved manoeuvrability is already having positive impact with operators insisting on the revolution feature."

The additional Revolution feature comprises of the hopper feeder range with centre mounted slew bearing that enables 360° rotation and movement of the hopper to enhance the mobility and flexibility on site. The mobility feature makes it ideal for barge loading and unloading, rail loading / unloading and stockpiling. The ability to move parallel enables the operator to manoeuvre the unit parallel to the vessel, minimising repositioning thus enhancing loading rates and efficiency.

Renowned for their innovative approach, Telestack are considered one of the key pacesetters within the bulk handling industry. As specialists in the complete design, manufacture and commissioning of mobile bulk material handling systems, the Telestack products can handle all free flowing bulk materials including ores, coal, aggregates, fertilizers, grains, woodchips, pellets and many more bulk materials. With one of the most comprehensive product offerings in the industry, Telestack can offer personalised solutions from an extensive range of Ship Loaders and Unloaders, Hopper Feeders, Truck Unloaders, Bulk Reception Feeders, Stockpiling Conveyors, Link Conveyors and Telescopic Stackers.

To arrange a meeting with any one of the Telestack experienced personnel at the SteinExpo 2017 exhibition, please email sales@telestack.com

For more information on Telestack please go to www.telestack.com

www.hub-4.com/directory/814

2 WORLD CLASS BRANDS .. ONE WORLD CLASS DEALER

www.agg-pro.com



McCloskey
THE ORIGINAL

AGG-PRO.com

Aggregate Processing & Recycling Ltd Hedging Lane, Wilnecote, Tamworth B77 5EX T. 44 (0)1827 280139 E. sales@agg-pro.com



Telestack[®]
Mobile Bulk Material Handling



Radial telescopic stockpiling aggregates



LF 520 stockpiling in stockyard

COME SEE US AT STEINEXPO / STAND NO C27 / DEMO AREA C



TCL 1031 stockpiling aggregate from a primary jaw crusher

#WeHaveTonnesToTellYouAbout

+44 (0) 28 8225 1100
sales@telestack.com
<http://www.telestack.com/events/Steinexpo2017>



**THE
POWER
TO MOVE
MATERIALS**

Terex|Finlay to showcase exciting new models at Steinexpo, 2017

Terex|Finlay will be presenting an impressive line of new models and showcasing its innovative T-Link telematics system at the SteinExpo Exhibition taking place in Homberg/Ohm, Niederoelfeiden, Germany, from 30th August - 2nd September, 2017.

At Steinexpo, Terex|Finlay will introduce the NEW J-960 jaw crusher. Two recently introduced crushers in the form of the I-120RS impact crusher and J-1170 (direct drive) jaw crusher will also be on display for the first time at an equipment show. The full line up of Terex|Finlay machines is confirmed as:

- NEW J-960 jaw crusher
- NEW J-1170 (direct drive) jaw crusher
- NEW I-120RS impact crusher
- 674 inclined screen (introduced @ Hillhead, 2016)
- TC-80 tracked conveyor (introduced @ Hillhead, 2016)
- 883+ heavy duty screener

It's not just the 'iron' that is being displayed at the show. In the hospitality booth operators will also be able to get live demonstrations of the Terex|Finlay T-Link telematics system. This innovative telemetry system enables operators to stay



the market place. SteinExpo offers our European customers the unique opportunity to see these new machines being put through their paces working in a quarry application," said Nigel Irvine, Sales Director.

Terex|Finlay representatives from sales and marketing, new product development and after-market customer support will be supported on the booth by representatives from our European dealer network.

 www.hub-4.com/directory/305



connected to and keep track of their equipment, monitor work progress, manage logistics, access machine critical information, analyse and optimize machine performance and perform remote operator support.

The machines will be demonstrated on stand C13 in the outdoor demonstration area.

"We look forward to returning to the SteinExpo exhibition. The timing has been perfect for Terex|Finlay as we bring three exciting new mobile crushers to

Wirtgen Group at Steinexpo 2017 with world premiere from Kleemann

The Wirtgen Group will be showcasing tailored solutions for recycled material processing and quarry applications when it exhibits products from Kleemann and Benninghoven at the industry trade fair in Homberg/Nieder-Ofleiden, Germany, from August 30 to September 2. The world premiere of the Kleemann MC 120 PRO jaw crusher will be center stage. Both the jaw crusher - operating as part of an interlinked machine combination additionally comprising the MCO 11 PRO cone crusher and MS 953 EVO screening plant - and the MBRG 2000 granulator will show off their high productivity at a live demonstration.

Heavy-duty MC 120 PRO jaw crusher for quarry applications

Industry professionals will get their first glimpse of the new MOBICAT MC 120 PRO mobile jaw crusher from Kleemann. Developed for use in quarries, the plant is extremely durable and engineered for a high throughput of up to 650 t/h. The heart of the system is the jaw crusher itself, which has been specially designed for processing hard rock. The Continuous Feed System helps to achieve the best-possible crusher capacity utilization. It regulates the feed of material as a function of its flow. To ensure the effective prescreening of fines, the MC 120 PRO is equipped with an integrated, double-deck prescreen with an extra-large screening surface.

The PRO series of crushers are operated using the intuitive SPECTIVE control concept. All plant functions and components are controlled via a touch panel.

MC120PRO
The new MOBICAT MC 120 Z PRO mobile jaw crusher is of highly durable design for use in quarrying operations and delivers high productivity.



MCO 11 PRO cone crusher is the perfect match



MCO11PRO
The MOBICON MCO 11 PRO combines impressive output with high maintenance friendliness in natural stone applications.

Granulator A2
The MBGR 2000 mobile granulator from Benninghoven breaks asphalt into its constituent parts without destroying the original grain structure, handling blocks with an edge length of up to 1.8 m.



Kleemann is exhibiting another representative of the PRO series: the MOBICONE MCO 11 PRO. Like the MC 120 PRO jaw crusher, this cone crusher is likewise equipped with a powerful diesel-electric drive that supports external power supply. The cone crusher also achieves a high hourly output of up to 470 tons and is the perfect match for the MC 120 PRO in the secondary crushing stage. Because the drive unit is installed in the bottom part of the plant, the MCO 11 PRO has a low center of gravity and therefore greater stability, a combination that minimizes noise and vibration. All plant components are easily accessible from the ground or from generously dimensioned platforms for maintenance and fueling.

Flexible MS 953 EVO classifying screen

The MOBISCREEN MS 953 EVO mobile triple-deck classifying screen rounds out the Kleemann machine combination. The three interlinked machines will be demonstrating their performance live at Steinexpo. The MS 953 EVO is suitable for natural stone and recycling applications at changing locations. It can easily be transported and quickly set up for operation. At the same time, the plant achieves a very high output, processing up to 500 tons of material per hour with its 9.5 m² screening surface on the top deck.

Benninghoven: Resource-saving MBRG 2000 granulator

The MBRG 2000 mobile granulator from Benninghoven breaks reclaimed asphalt into its constituent parts without destroying the original grain structure, handling blocks with an edge length of up to 1.8 m. This gentle crushing technology creates

MS953EVO
The MOBISCREEN MS 953 EVO triple-deck classifying screen can be put to highly flexible use in natural stone and recycling applications.



the ideal conditions for almost complete recycling of RAP in an asphalt mixing plant. Another significant advantage of this crushing technology is the much lower quantity of fines it produces – a key advantage that almost completely prevents blockages of transport paths and the parallel drum inside the asphalt mixing plant. The granulator is ideal when it comes to creating new traffic arteries from more than 90% "reclaimed" roads.

Wirtgen Group experts on hand

Experts from Kleemann and Benninghoven will also be on hand at Steinexpo 2017 to offer professional advice and answer questions about the product range, special applications, technologies and service.

SEE US AT

steinexpo
2017



www.hub-4.com/directory/481



f-e.de

5 COMPETENCES

- General Contractor
- Mechanical Treatment
- Biological Treatment
- Recycling Machines
- Service and Optimizing

5



RWM

12-14 SEPTEMBER 2017
NEC BIRMINGHAM

Building a resource
efficient future

**OUTDOOR
AREA 141**

Eggersmann UK Ltd. First Floor, Sitka House, Sitka Drive | Shrewsbury Business Park | Shrewsbury, SY2 6LG | United Kingdom | Fon +44 1743 3434-00 | anlagenbau@f-e.de

IMPAKTOR 250



THE NEW GENERATION OF
MOBILE STONE CRUSHERS



price/performance ratio
unbeatable in this business



track system guarantees
high maneuverability



universal application
in many materials



ARJES

Recycling Innovation



VISIT US AT THE BOOTH – OUTDOOR AREA!

steinexpo
2017

C9

www.arjes.de

HARDOX Wearparts – What is it?

The background.

The beginnings of Hardox go back to the seventies when the Oxelösund plate mill needed to find alternative customers, after the collapse of the Swedish shipbuilding industry. A quenching line had already been installed, and it was decided to further develop the products from this process. The first products were very basic compared to today, and much development has taken place over the years to develop different grades and thicknesses. Workshop properties have also been developed to enable cutting, welding, machining etc. by conventional means.

The pioneers of quenched and tempered steels at SSAB soon realised, that the only true way to develop the market for these new steels, was to have direct contact with the people who use them. This is still valid today, as it was during the seventies and eighties.

And of course it was important to have a brand to identify with. After some creative thinking, Hardox was born.

Over the years SSAB built up a competence in supplying a complete package to the users of Hardox and other high strength steels:

- Technical support
- Dedicated sales force
- Stocks
- Product development

Technical support is seen as key in terms of customer and market development and takes a number of forms:

- Workshop recommendations are key in ensuring proper use of the different steels, resulting in the best quality products from our customers
- Dedicated engineers working with customers to select the best materials and procedures, and to deal with those sometimes tricky questions. They are also at hand to guide customers through development projects whenever required.
- Customer education programmes covering a variety of topics and aimed at different market segments.
- Technical experts looking in detail at such things as material flows, wear rates from different materials, software for wear calculations et al.

A dedicated sales force, who have a high awareness of the industries they operate in, and well educated in the offering from SSAB, with a focus on the end user.

Stocks and availability is an important part of the offering, especially when operating in a market that demands quick turnaround in areas such as repair and maintenance. Hardox is available from stocks around the world.

Product development is there for pushing the limits; harder, tougher, thicker, thinner steels. New grades, improvements to existing grades, production methods, the dimension programme, are all under constant development. >





Where does Hardox Wearparts fit in?

SSAB has a complete offering for Hardox as a flat product. The Hardox Wearparts network is made up of customers who have developed an expertise in the processing and uses of Hardox. They convert the offering from SSAB into parts, used in a variety of industries, where wear is a critical factor.

Hardox Wearparts members play a critical role in developing the markets for Hardox; new industries, applications and customers.

- Working in close proximity to their customers
- Developing expertise in different segments
- Investment in capabilities to process the highest Hardox grades
- Quick turnaround for service and reliability
- Working to increase customers' productivity
- A complete offering with complementary products.

What is the relationship with SSAB?

The vast majority of Hardox Wearparts members are independently owned. A few members are fully owned by SSAB and SSAB has part ownership in some.



SSAB expects members to reach and maintain high standards regards equipment, capability and approach to the market, and loyalty to the Hardox brand. Access to the network is based on these criteria. Hardox is a significant part of any member's business.

This is not a franchise arrangement, and there are no fees involved in becoming a member. It is a business to business relationship based on being mutually beneficial with regards the development of Hardox to a range of industries.



All centres have access to specific marketing information and support, and to the full range of support services that SSAB has to offer. There is a dedicated team within SSAB who work specifically with the Hardox Wearparts network, whose task involves enhancing the SSAB offer, and to aid the business development of the network.

Is there a Hardox Wearparts near you?

The first members were appointed in 2001, with a steady growth until around 2012 to around 100 members. The number of members is now at 300 with many more in the pipeline.

The main growth areas are in the Americas and Asia, although some growth is also planned for Western Europe where a mature network exists.

The Hardox Wearparts network is seen as one of the most effective ways to demonstrate the benefits that Hardox can bring to the end-user, and members are able to benefit from the business that this brings.

The ambition is to cover all significant industrial and agricultural areas where wear is a factor, and where service and availability can benefit the productivity of the local industry.



Hardox Wearparts in Germany

There are currently 17 members in Germany. The members offer a wide range of capabilities across a range of segments. This has resulted in increasing cooperation between the centres to develop certain customers and segments.

Baumaschinen Hinz GmbH & Co. KG offers a specialist service to quarry and mining and also operate in other segments such as demolition. Particular pride is taken in their customer specific attachments including griddle buckets and rippers. <http://www.baumaschinen-hinz.de>

BleSta GmbH Blechbearbeitung produces a range of wearparts for different segments, but their expertise is in the manufacture of screens for an impressive range of applications. <http://www.blesta.de>

Bergauer Regenerierung GmbH is a pioneering user of Hardox and offers a full manufacturing and refurbishment service across many industries. <http://www.bergauer-regenerierung.de>

EBEV GmbH & Co.KG is a specialist supplier and manufacturer of spare parts for road paving finishers. A perfect complement to this is the Hardox Wearparts activity for a range of applications. <http://www.ebev.de>

Giebel GmbH Schweiß- und Verschleißtechnik specializing in refurbishment activities and producing to customers specific requirements; buckets, relines, screens with quality and service at the forefront. <http://www.giebel-schweisstechnik.de>

Gerhard Barten GmbH are specialists in the repair and maintenance of construction equipment, recycling machines and demolition shears priding itself on its service and reliability. <http://www.gerhard-barten.de>

HS-Schoch GmbH & Co. KG has two locations and offers a wide range of attachments, as well as refurbishment services. They also compete in the European truck trials with their Hardox sponsored truck. <http://www.hs-schoch.de>

HUP Schweißtechnik GmbH specializes in wear solutions for a range of diverse industries, working with pipes, Archimedes screws and other diverse products. <http://www.hup-pietz.de>

Karl Müller GmbH offers a wide range of products and services aimed primarily at the quarrying and mining sectors. <http://www.karlmuller-alpen.de/>

Karl Höchst GmbH & Co. KG specializes in profiling and material availability; quality combined with a quick and reliable service. <http://www.hoechst-gruppe.de>



L&K Land- und Kraftfahrzeugtechnik GmbH comes with a diverse range of attachments for loaders, excavators and other machinery. Spare parts and refurbishment activities are another major part of the business. <http://www.luk-stadtilm.de/>

Mörtlbauer Baumaschinen Vertriebs-GmbH comes with a full range of attachments for diverse segments complemented by wearparts available from stock. <http://moertlbauer-baumaschinen.com>

Prall-Tec GmbH is a specialist supplier to the crushing industry with extensive availability of spare parts and service. <http://www.prall-tec.de>

Schulte Maschinenbau Verschleißtechnik GmbH is a service orientated supplier with repair and maintenance services to quarrying, mining, demolition and recycling sectors. <http://www.schulte-maschinenbau.de>

VeRotool Technik GmbH offers extensive workshop capabilities for your specialist wearparts, as well refurbishment and maintenance of your equipment. <http://www.verotool.de>

Weber Stahl-Anarbeitungs-Service GmbH offers an extensive range of metalworking capabilities and also uses these to manufacture tipper bodies, attachments, and other products. <http://www.weber-stahl.de>



Want to learn more?

More information is available on www.hardoxwearparts.com. There will be a dedicated Hardox Wearparts stand at the Steinexpo show this year. Representatives from SSAB and the Hardox Wearparts network will be at hand to meet you.

It will be an ideal opportunity to the members of our network as well as technical experts from SSAB to answer any queries you may have.

We look forward to welcoming you onto our stand at Steinexpo from 30th August - 2nd September.

Kies- und Quetschwerk Oberbrunn GmbH doubles sand production thanks to CDE wet processing plant

Located in Gauting, near Munich in Germany, sand and aggregates producer Kies- und Quetschwerk Oberbrunn GmbH is reaping the benefits of their new CDE EvoWash wet processing plant after doubling their concrete sand production.



Prior to switching to a CDE solution, Kies- und Quetschwerk Oberbrunn GmbH was using a bucket wheel and fines recovery cyclone. However, the company was dealing with issues that prevented it from maximising its operations. These included the need for continuous maintenance for the - too numerous - moving parts of its existing installation as well as the latter's limited capacity which restricted production to a maximum of 35 tonnes per hour if quality and consistency of the final product were to be ensured.

Already interested in the modular concept offered by CDE, Kies- und Quetschwerk Oberbrunn GmbH's Managing Director Manfred Kirschler started a discussion with the CDE team based in Germany. Mr Kirschler recalls: "When we initially met with CDE, we were ready for a radical upgrade of our operations. We needed a wet processing plant that could easily adapt to the existing plant and that would be efficient, reliable and economical.

"Crucially, we were aware that we were not realising the maximum performance of the entire processing plant. We wanted a plant that was able to process a lot more sand than the current 40,000 tonnes per year."

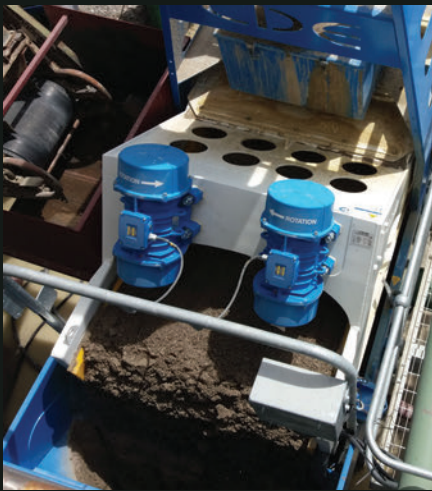
Kies- und Quetschwerk Oberbrunn GmbH's objective was to double its concrete sand production to be delivered in its totality to a concrete batching plant located next to the sand washing plant.

Manfred Kirschler continues: "For a consistent production of up to 80,000 tonnes per year, the CDE EvoWash wet processing plant was an ideal solution. Compact, economical and powerful, the plant is now producing 60 tonnes per hour of sand – equivalent to 68,000 tonnes per year – and can process up to 80,000 tonnes per year if the company's production requirements increase.



Christoph Aibel, Business Development Executive for CDE in Germany, adds: "From the first conversation with Mr Kirschler and the visit to the site, it was obvious that a lot could be done to improve the site's operations as well as its levels of production."

"To satisfy the requirement for a plant that would adapt to the constraints of the site's geography, the modular concept as well as the tailor-made design of the CDE equipment meant that an ideal solution for the client could be found without having to make compromises.



"Hard wearing and conceived for ease of maintenance, with the EvoWash there are no moving parts to deal with any more. The new EvoWash at Kies processes 200 tonnes of limestone raw feed per hour with 35% of 0-4mm sand. Concrete fractions of 4-8mm, 8-16mm, 16-32mm and 32/X are processed with the rest of the plant."

Manfred Kirschler says: "We are delighted with our new CDE modular sand washing system. It is economical, requires a minimal amount of civils and provides consistent high-quality sand in any quantities. Sand quality stays extremely high and consistent throughout the process, with a sand ready to be processed by the concrete batching plant straight from the belt."

As is the case for every plant CDE designs and deploys anywhere in the world, the ProMan system kicked in as soon as the order was placed. ProMan entails the allocation of a Project Manager as the single point of contact for the client. Supported by a Project Team that covers all aspects of the work, the Project Manager accompanies the client from the conception of their bespoke washing installation to its commissioning, with responsibility to deliver the highest level of quality within agreed timeframes and costs. With the added bonus of fully transparent and straight-forward communications, the development, building and commissioning process becomes seamless.

Christoph Aubel concludes: "It has been a pleasure to work on the improvement of Kies- und Quetschwerk Oberbrunn GmbH's concrete sand operations. Thanks to the introduction of a CDE EvoWash sand washing plant, concrete sand production at the Kies site has now become highly efficient in terms of quality, quantity and consistency."

Visit CDE at Steinexpo from 30 August to 2 September at stand P235.



www.hub-4.com/directory/163

Baioni supply complete dewatering centrifuge system for APS Ltd

Situated near Slough, in Berkshire, Aggregate Processing Solutions (APS) is operating a washing plant where Baioni has recently supplied a centrifuge system to complement the whole existing plant. Baioni has boosted the capacity of its decanter centrifuges range to pave the way for further improvements in waste water and sludge treatment for a wide range of feed solids and flows. The Italian company has invested in a new application for centrifuge systems, that of a compact dewatering unit fully equipped mounted on a skid and delivered inside a ISO 40' OT standard container.

This is the new BaiPod Container, delivered to the UK early in 2017 and now successfully operating in a recycling aggregate processing plant; APS Ltd is pleased with the ROI achieved as the system offers also a reliable, completely pre-piped and wired to minimize installation time and cost. This provides instant solution as it is totally portable and require only an appropriate space outside; commissioning time is minimal and can be operational in within approximately 1 day.



The heart of the BaiPod Container range is represented by the BaiDec 65Lv high performance centrifuge decanter with all necessary ancillaries such polymer preparation

station, control panel with PLC logic completely automated operation, feed pump, polymer dosing pump, flow meters, screw conveyor, interior lighting with 6 double 58WWx2 ceiling lights, doors for hydraulic and electric connections and auger output. The entire system is made available on a standard 40' container for customer's benefits, developed with a focus on cost-efficiency and easy operation.

The client base for the innovative BaiDec range of decanter centrifuges benefited from the placement of orders for 16 permanent units across the last few years in the UK plus a brand-new system to be released soon in July 2017 that Baioni engineers are currently completing.

Compared with even high performance conventional equipment, the innovative design and construction of BaiPod Container provides a very dry cake at a low cost. The many technical breakthroughs keep life cycle costs to be absolute maximum. BaiPod range decanters are designed for effective protection against the effects of abrasion; special wear-resistant materials are used for all critical parts, resulting in low maintenance costs. This helps the new BaiPod Container unit to be a solid long-term investment.



www.hub-4.com/directory/2889

FOR YOUR UPTIME CHALLENGES IN MINING

When it's related to productivity and maintenance, we know there is room for improvements. That's why uptime reviews are part of our services. A review can shed new light on your wear challenges. Hardox Wearparts specializes in wear solutions for your toughest environments, from extraction to loading, moving, crushing and screening the minerals. With more than 250 service centers in more than 70 countries, there is probably one close to you. Visit the website for more details on reviews and other uptime services.

**ASK ABOUT
AN UPTIME
REVIEW**
hardoxwearparts.com



Only the best will do for Earthline

Earthline Ltd of Ogbourne St. George, near Marlborough, Wiltshire, has taken delivery of five more Volvo EC220E excavators thanks to the reliability, performance and after-market support it has experienced running Volvo equipment over the last six years according to Managing Director, Philip Coplestone.

The five new twenty-two tonne Volvo models join an ever increasing fleet of Volvo branded excavators and dumptrucks and while Philip takes an objective view of the marketplace when it's time to replace or add equipment, the main reason for choosing Volvo is down to the reliability, performance and robustness of the product as well as first class after-market support, in his opinion. "This time around when we looked at the twenty-tonne excavator market, it was our view that there was a massive difference in the build quality of the Volvo EC220E compared to the competition and, as we've experienced with our existing D models, the output is far superior to other makes as well," says Philip. "But that's only part of the equation. In our line of business, it's crucial we get the best back-up and after sales service wherever our equipment is working and Volvo Construction Equipment has not been found wanting in this regard," he says.

"Ever since we purchased our original second-hand EC700C and subsequent EC480, EC380's and EC220's, we've found Volvo's support to be solid and most importantly - consistent," continues Philip. However Earthline Ltd has opted to take out Volvo's Blue Service Agreements on the new models for total peace of mind.

Powered by a six-cylinder Volvo engine developing 174 nett hp, the EC220E offers the latest in engine technology and operating sophistication. For example, pump flow is controlled for combined digging and swinging operations to reduce the flow loss through the overload relief valves, whilst maintaining digging power and maximum swing torque. When Eco-mode is selected, the machine provides better fuel efficiency without loss of performance in most operating conditions.

The Volvo Care Cab offers a large roomy interior with plenty of leg room and foot space. The excellent all-round visibility is enhanced by pressurized and filtered cab air supplied by a 14-vent, climate control system. An adjustable easy to read LCD colour monitor provides real-time data on machine functions, important diagnostic information and a wide variety of work tool settings. The monitor also doubles as a rear-view camera.



The new machines have been deployed across the company's quarries, recycling sites, and inert landfill sites. They join a mixed fleet of excavators, dozers, loading shovels and articulated hauler. However, it is Earthline's haulage and road transport business that is at the heart of the twenty-three year-old family run firm - in the hands of the second generation with brothers Philip and Matt Coplestone.

Earthline Ltd, the largest haulage company covering an area from Banbury in Oxfordshire to Farnham in Surrey, currently operates 80 tippers of its own with another 20 on permanent hire besides articulated rigs, sweepers and other miscellaneous transport. "In essence, the equipment, quarries, and recycling sites are there to feed our haulage fleet delivering virgin and recycled product across the region," says Philip.



www.hub-4.com/directory/876





PORTAFILL

THE NEW

KING OF THE NORTH

with



SUPPLIES Ltd

Northern UK Dealers



0845 257 6500 • +44 (0) 1698 828683

E sales@scgsupplies.co.uk W www.scgsupplies.co.uk

Staying Safe this Summer when Working at Height



When working outdoors in the summer, it is important to minimise your operator's risk to health by accounting for a number of seasonal hazards that could potentially arise.

With an increased exposure to direct sunlight within the summer months, the number of injuries and illnesses can dramatically rise when working at height on equipment such as mobile booms and scissor lifts.

There are several factors to consider to help reduce these risks which include the following:

Direct Sunlight Control

Heat exhaustion is a common sun-related illness that can be caused from prolonged exposure to the sun, especially when combined with strenuous activity. It is important to remember that when operators are working on equipment at a high level, they have no shelter from the sun and their exposure is much greater than when working at ground level so better precautions must be taken in to consideration.

During the peak sun hours of the day, it is advised that operators working at height outside keep hydrated by drinking plenty of water, wear sun cream and keep it topped up throughout the day and wear appropriate equipment such as hard hats, glasses and protection clothing to minimise direct exposure. It is advised that during break and lunch times, operators should rest in a shaded area that is away from any direct sunlight to allow them to cool down.

Equipment Use

A vital part of ensuring all possible risks have been assessed, is making sure your operators understand how to use the equipment correctly. Anyone using the equipment should be sufficiently trained and competent to do so in all conditions. In the summer, remind your operators to keep in mind the following:

- Always check ground and weather conditions before operating and ensure setup is safe – in the summer the ground may be hot, dry, cracked or dusty. And just because it's hot, don't underestimate the breeze; check the wind speed
- Make sure that your access equipment has been stored away from any direct sunlight prior to being used and is not too hot to work with
- If equipment has been hired, it is important that you get detailed instructions on how to deal with issues or faults which may occur in extreme weather conditions

Businesses can significantly reduce the risk to health of their employees in the summer months by having the correct safety requirements in place and ensuring that all employees are equipped with the relevant skills and knowledge.

For information on the training that we offer and for guidance on working safely at height this summer, please call Mentor Training Solutions on 01246 386900 or visit our website at www.mentortrainingsolutions.co.uk



MDS International develop the M412

MDS International believes in putting its customers at the forefront of its Design and Product Development process. Therefore, MDS Trommels are evolving all the time and are a key strength in our business that we take immense pride in. Our products are innovative and cutting edge; equipped with features to drive out maximum productivity and efficiency.

We have a range of Trommels that can screen rocks and output products from as small as 50mm (2 inches) to as big as 1.25m (50 inches). The customers can select the output sizes as per their needs using our large variety of screens. Our Trommels are very versatile and have diverse applications. They can be used to clean a wide array of materials which include armour and blasted rocks, demolition waste, sticky and hard limestone, overburden, demolition waste and wood waste. Our bestselling M515 Mobile Trommel is famous and

very successful because it comes packed with features that make it the perfect solution for screening all these materials in different sizes up to 32". We also have M615, M820 and M825 and Apron Feeders and details of these can be found on our website. Our Apron feeders are designed to be robust so that they can handle rocks up to 50".

We are always developing and are proud to announce that we are in the process of launching a new Model: The M412 Trommel. This Trommel has been developed after getting feedback from our customers. This is a lighter yet effective Trommel that is smaller than its big brother the M515. Customers will be able to transport it easily and cost effectively from site to site as it is designed to fit on standard trucks.

 www.hub-4.com/directory/17497



UK & EUROPE SALES MANAGER POSITION AVAILABLE

MDS International prides itself in being the manufacturer of one of the largest and technically advanced trommels in the world. Our most notable models of M515, M615 and M820 are being used globally to screen materials. The company serves to provide solutions in the Quarrying, Mining, Sea Defence and Recycling sectors. We are growing as the demand for our machines increases and therefore need an enthusiastic, dedicated and committed team to deliver to our customers.

An opportunity has risen for a UK & EU Sales Manager that will be the lead for our sales within the region. The role is an exciting opportunity for the suitable person to take on a challenging role of driving forward sales and growing our market share in the region.

The position comes with a competitive salary and is accompanied by commission and benefits. Suitable applicants with sales experience in heavy machinery should forward their CV along with a covering letter to liam.murray@mds-int.net.

 liam.murray@mds-int.net
 +353 42 966 7899
 www.mds-int.net

 /mdsinternational
 /MDSInternational
 /company/mdsinternational
 /mds.international

<http://www.mds-int.net/>



RUD Chains Ltd

Tyre Protection

Chains Reduce Operating Costs & Increase Productivity

- Maximum Traction, Resistance & Protection
- High Resistance on Hot & Burning Surfaces
- Innovative Three Wear Levels on The Chain
- Reduce Operating Costs & Increase Productivity
- 24 Hour Service & Support Available

www.rud.co.uk 01227 276611

RUD Chains Ltd, Units 10-14, John Wilson Business Park, Thanet Way, Whitstable, Kent, CT5 3QT



"Equipment built to work as hard as you do"



**SHRED
SCREEN
SEPARATE
STOCKPILE**

The EDGE brand is intrinsically linked to the material handling, mining and recycling industries. With an extensive product range, EDGE offers high quality, robust products from stockpiles, slow speed shredders, trommels to fines recovery plants. All of which have been designed to improve productivity and minimising operator costs.

MAKE AN ENQUIRY TODAY...

+44 (0)28 8774 0525

www.edgeinnovate.com

info@edgeinnovate.com



DUO supply new Wash Plant for Brice Aggregates



Based in Witham, Essex, Brice Aggregates is the latest company to take delivery of a new Terex Washing Systems (TWS) wash plant supplied by DUO (Europe) who are the TWS dealer for England and Wales. Owned and operated by Simon Brice the plant will process sand and gravel for a single supply contract within the area.

A greenfield site:

With a reserve of approximately 2.5 million tonnes of sand and gravel, development started one year ago on a 34.6 hectares green field site within the Colemans Farm Estate. When the haul roads were established, these were followed by the concrete pads for the plant and the weighbridge and the development of water lagoons. With all the infrastructure complete the company then researched the market and following a successful tender DUO Equipment were then selected to supply a new wash plant based on the TEREX® Washing Systems Aggresand™.

Danny Shelley – QM, commented, "Based on experience with Powerscreen equipment and the solid reputation that DUO have it was decided to invest in a 200tph TWS modular wash plant based around the Aggresand™ and AggreScrub™ combination."

This investment in a TWS wash plant will provide cohesive solutions for all of Brice Aggregates material and mineral washing needs and ensures reliable, high quality and very productive equipment that meets individual materials and mineral washing requirements within today's stringent specifications of clean material.

The sand & gravel plant:

The main elements of the plant at Colemans Farm are from the impressive TWS portfolio; the TEREX® AggreSand™ 165, 3-deck modular wash plant and a AggreScrub™ 150. The AggreSand™ is pre-wired and pre-plumbed and is an easily installed modular concept that facilitates quick installation; a combination that is very appealing in terms of access, serviceability and modularity.

Danny, further commented, "It's a very neat compact plant incorporating an in-line system with 'as raised' ballast being fed by loading shovel into the feed hopper. With pumps



installed we are responsible for the wash water going in and the dirty slurry water coming out of the plant in to the lagoons, so it's a very simple and effective set-up."

Installed and commissioned in January 2017 the plant is currently processing material well within its capabilities. The Aggresand 165 uses the H12 (12M3) feed system which is fed by wheel loader via a heavy duty 4m static grid which are both powered by an integral 37Kw electric hydraulic powerpack. Material is then delivered onto the main inclined feed conveyor which is driven by an 11Kw Weg Electric motor and Bonfiglioli® gearbox mounted on the drive drum. The 19m long main conveyor has a 1000mm wide belt and has an integral heavy-duty rubber lined wash box which soaks the material before it is delivered to the rinsing screen.

The AggreSand 165:

The innovative AggreSand™ 165 at Colemans Farm features a 3-deck 16'x5' rinsing screen working at 18° angle which utilizes individually controlled spray bars on each deck. The 2-bearing screen is fitted with polyurethane modular media on



all decks with the top deck acting as a protection deck removing any material above +40mm which is then fed via an on-board conveyor to stockpile. A middle and bottom deck overflows feed the 5-40mm onto an extended inclined conveyor that feeds the AggreScrub™ 150 for scrubbing and removal of clay conglomerates. The split bottom deck, 2mm and 5mm provides the feed to produce the required two sands. All chute-work on the AggreSand™ 165 employs the now well tested dead-box system which results in rock on rock set-up which is proving to give excellent wear properties.

The Brice AggreSand™ 165 was supplied with the high capacity 200tph sand plant consisting of one a 30Kw 200/150 pump for coarse sand and a 22Kw 200/150 pump for soft sand. A G4-660mm cyclone for coarse sand and one G4-500mm cyclone for soft sand produce two clean in-specification sands. A specially designed rubber-lined underflow box allows blending to take place so that an acceptable coarse and fine sand ratio can be achieved. These sands are then delivered to separate radial conveyors and stockpiled.

The AggreScrub 150:

The AggreScrub™ 150 consists of a 6.5m hull fitted with twin rotating shafts fitted with 30mm abrasion resistant blades. The blades convey the material from the feed end of the scrub to the 12x5 two deck aggregate rinsing/sizing screen. As the material travels through the hull the abrasive action of the aggregate, as it collides with other aggregate (stone on stone) scrubs it clean and breaks up any clay conglomerates which are then floated off through the back of the AggreScrub™. Any organics such as roots or plastics are also floated off to be dewatered over the AggreScrub™ 6x2 trash screen. Underflow from the trash screen is received in a catch box under the screen and then gravity fed to the sump tank under the hull.

Scrubbed aggregate exits the main discharge of the AggreScrub™150 onto the 12x5 two deck part-rinsing screen. The initial section of this screen is fitted with spray bars to rinse off any sand or grit residues produced during scrubbing. The rinsed grit is captured in a partial catch box under the screen and is piped to the sump tank below the hull to join the trash screen underflows. This sump tank is fitted with a 100/100 centrifugal pump which pumps this dirty water back to the AggreSand™ 165 sand plant to recover any sand and make maximum use of internal water.

The two deck 12x5 sizing screen is fitted with polyurethane modular media to produce 5-10mm, 10-20mm, and 20-40mm clean aggregate, which is stockpiled using three TC6532 conveyors.

Cutting Edge Control System:

The control system for this specific AggreSand™ wash plant is from a panel which is mounted onto the machine and is pre-wired. This option exemplifies the flexibility of TWS and DUO and the AggreSand™ concept to suit individual customer needs or preferences.

A total success:

John Bracken – DUO Group Operations Director, commented, "The TWS © AggreSand™ is an ideal plant for the Brice Aggregates operation at Colemans Farm, offering a fully modular, pre-wired and pre-plumbed electric powered wash plant. With a heavy-duty robust build, it is ideal for rugged operating environments and with a quick set-up time it offers an environmentally friendly operation with zero exhaust emissions."

Since the plant was commissioned it has been very successful and consistently provided Brice Aggregates with complete control and flexibility over their production enabling them to satisfy their contract.

Danny, commented, "There are a number of other S&G operations in the area and demand is high for 20mm stone. Although this is in short supply, we have been able to offer more availability, as we have a more favourable 60% stone, 40% sand split. Since the plant was commissioned it has consistently produced very clean, high specification saleable material, we are very pleased and have the confidence in the support from DUO.

Garry Stewart - TWS Regional Sales Manager, commented, "It's great to have another successful installation in the UK. TWS & DUO have had major success in this market where the TWS modular concept has been well received. Customers are demanding rapid deployment, higher production rates combined with minimal downtime the AggreSand™ & AggreScrub™ modular concept delivers on all these fronts. The market for Aggregates is good throughout England, but particularly in the South East, where we have many of these machines performing well, and exceeding customer expectations."

 www.hub-4.com/directory/928

QMS AGGREGATE PROCESSING EQUIPMENT



Designed & Manufactured in the United Kingdom



- Crushers
- Screens
- Feeders
- Conveyors
- Complete Modular Plants



CONTACT US: T. +44 (0) 1530 811 081 | F. +44 (0) 1530 510 960 | E. sales@qmsupplies.co.uk

Quarry Manufacturing & Supplies Ltd Grange Road, Bardon Hill, Coalville, Leicestershire, LE67 1TH



VISIT US: www.qmsupplies.com

NEW RUD B-ABA Lifting Point for Bolting Shows Damage & Wear via Wear Marking Indicator

RUD Chains is a leading manufacturer of lifting and lashing equipment that helps guarantee ultimate safety when lifting and handling heavy loads. Their diverse product range offers over 600 lifting and lashing points for bolting and welding covering a working load capacity range from 0.6-250 tonnes.



The importance of safety when lifting and handling heavy loads is vital to the operator and to the goods being lifted. RUD have introduced the NEW B-ABA lifting point for bolting to their wide range of lifting equipment.

The RUD B-ABA lifting point for bolting offers a safety factor of 4:1, a full working load limit in all directions and is operational to temperatures as low as -40°. It comes with RUD's RFID chip embedded into the product making it easy to manage and organise inspections of the equipment quickly and efficiently.

The lifting point comes with RUD's innovative NEW ICE-Bolt which is made from their revolutionary patented fine grain steel which offers an increased working load limit.

The B-ABA provides the ability to check the load ring for damage and wear, via their impressive patented wear marking indicator on both the inside and outside of the body of the lifting point. It allows the user to know if there is more than 10% wear on the item, more than 10% wear on a lifting point means the item must be removed from service. Therefore, offering an ultimate safety feature.

The B-ABA is a robust, top quality lifting point which can be supplied from 1.6 to 31.5 tonnes. It can be used across a wide range of working environments from heavy duty lifting, engineering, construction, rail, offshore, and military applications to name a few.

RUD provide standard and tailored solutions to meet even the most demanding environments. Top quality products combined with technological innovations and experience make RUD a top choice for all your lifting requirements.



www.hub-4.com/directory/743

Riverside supply Aber Sand & Gravel with a new Portafill 3000ST Wash Plant

ABER Sand & Gravel have been supplied with a new Portafill 3000ST Wash Plant by UK dealer Riverside Machinery Ltd.

Based in the rolling hills of Aberystwyth, Aber Sand & Gravel have taken delivery of the 3000ST, which consists of a diesel driven fresh water pump, tracked rinsing screen, sand plant and sand stockpiling conveyor.



The Welsh company are strategically located within an area of outstanding natural beauty and the compact product is efficient and easy to transport, and most importantly complies with strict planning rules and regulations.

With a working height of 3.5 metres and a working area of 18 metres x 15 metres including stockpiles; the Portafill Wash Plant ticked all the boxes.

The 3000ST is currently set-up to produce 5mm washed concrete sand, and 5mm – 15mm washed gravel and washed oversize. The oversize will be crushed and recirculated through the system. The strategic location comes in handy because water for the plant is provided by an on-site lagoon, and the water waste is then sent to a separate lagoon.



www.hub-4.com/directory/12459

UK's First Bobcat TL38.70HF Telehandler for Quarry/Farm

The UK's first new Bobcat TL38.70HF Agri telehandler is acting out an unusual double role, working both in a quarry processing plant and on a farm at the foot of the Black Mountains in the county of Herefordshire in England. The new telehandler is owned by Black Mountain Quarries Ltd, based at Howton Court in Pontrilas in Herefordshire, and was supplied by Kellands (Plant Sales) Ltd, an Authorised Dealer for the Bobcat and Doosan ranges.



Black Mountain Quarries Ltd is a family-owned business with four working quarries providing the widest selection of walling stone in the UK, from block stone for building and walling; flagstones for internal flooring and external paving to split stone for traditional and modern roofing tiles.

The business was founded by owner, Adrian Phillips, in 2005 on the family farm in Tybubach in Herefordshire. Here the stone the company quarries – technically a red Devonian sandstone – is characterised by its green-grey colouring combined with russet brown tones. It was the first product from the company and is sold as BMQ Random Building stone. Having been used historically in the region, it was initially very popular for local projects. The quality and colouring of the stone quickly led to national demand and the business expanded from there.

In 2006, the company opened Llandraw Quarry a mile along the valley. The Llandraw stone is identical in colouring and quality to that at Tybubach, but its natural laminations gave the business the opportunity to cut flagstones and traditional stone roofing. In 2007, Adrian Phillips took on Callow Hill Quarry in Monmouthshire, which allowed the business to offer a different type and colour of building stone and blockstone. Finally, in 2011 when the De Lank Quarry came up for sale in Cornwall, Black Mountain Quarries jumped at the chance to include its beautiful Cornish granite in its portfolio.

Higher Power and Performance

Adrian Phillips commented: "Though we bought it through our Cornwall quarry, the new Bobcat TL38.70HF AGRI telehandler is now working at the central processing plant at Howton Court for the stone from the quarries in Herefordshire

and Monmouthshire. It has taken over from a Bobcat TL360 telehandler, which we have been very pleased with. We have switched the two machines so the TL360 is now working in the Cornwall quarry, where it continues to do good work.

"I bought the new Bobcat TL38.70HF telehandler to provide more lifting capacity and a greater lifting height. At the processing plant, it carries out a range of material handling duties from loading stone into conveyors and lifting pallets to unloading the trucks that come in with stone from the three quarries.

"The new telehandler also meets our requirement for having a relatively small footprint, being able to work and move within the confined spaces at the processing plant. As well as the extra boom extension, I have also been

impressed by the same high build quality we saw on the TL360 and the power and the speed of response coming from the new Bobcat D34 engine."

The Bobcat D34 Stage IV Engine

The Bobcat D34 Stage IV engine offers electronic fuel injection; High Pressure Common Rail technology; turbo-charged air management and Cooled Exhaust Gas Recirculation for lower emissions and does not require the use of Diesel Particulate Filter (DPF) technology. It has been developed and manufactured internally specifically for use in the company's new generation Stage IV telescopic loaders for highly regulated markets in Europe and elsewhere.

The D34 97 kW (130 HP)/500 Nm engine in the TL38.70HF AGRI model utilises DOC and SCR with DEF injection after-treatment technologies, for tough applications requiring more power. The compactness of the D34 engine and a new styled low profile engine hood have also enhanced visibility on the engine side of the TL38.70HF AGRI.

The HF/High Flow Technology in the TL38.70HF AGRI offers outstanding hydraulic capabilities and performance with a class-leading 190 l/min load sensing pump (150 l/min at the auxiliary line) and flow sharing distributor.



This allows the operator to work at significantly lower speeds, consume less fuel and benefit from remarkably shorter working cycles. To prevent unnecessary oil heating and power loss, the load sensing pump supplies oil only when hydraulic power is required. If required, the full oil volume is available immediately, thanks to the Quick start system.

An automatic fan inverter, a 40 km/h transmission and 24 inch tyres are among the many additional features incorporated in AGRI versions of Bobcat telehandlers. Other special features include a Sears high comfort air suspension seat and premium cab finish (deluxe steering wheel, armrest, aluminium panels); boom wiring harness and electric connectors; a lockable fuel cap; a trailer brake valve; a cyclonic air prefilter; a drawbar coupler tow hitch and rear electric socket; a support for the vehicle registration plate; back-up alarm; work light on the boom; rear mirror; a loudspeaker and radio ready configuration; a roof window wiper; sun visor and a rotating beacon.

Adrian Phillips added: "The new Bobcat TL38.70HF AGRI telehandler is fully road certified and set up for towing trailers along the farm roads. After a full day in the stone processing plant, I tend to bring the new telehandler back to the farm, where it is an excellent tool for farm work."

Backed by a three-year warranty as standard, the TL38.70HF AGRI is described as a Productivity and High Flow model and

is part of a new range of telescopic loaders launched by Bobcat for agriculture, that complements another new range of 11 rigid frame telehandlers with lifting capacities up to 4100 kg and lifting heights up to 17466 mm, aimed at the construction and rental industries.

Replacing the previous TL470HF model, there is an improved load chart in the TL38.70HF AGRI, providing a 300kg increase from 3.5 to 3.8 tonne in the maximum rated lifting capacity. The maximum lift height on the 24 inch tyres is 6975 mm and the maximum horizontal reach is 3915 mm.

Like all of the new generation models, the TL38.70HF AGRI offers several new features providing higher comfort and productivity, including Power Lift, an efficient lifting technology that optimises the use of hydraulic flows between telescopic boom cylinders to increase the lifting capacity; an automatic parking brake for enhanced safety and operator convenience and Boom Cushion Retract, that automatically slows down the boom speed when the boom is nearly fully retracted or at min/max angles, increasing safety and operator confidence.

There are also a number of tried and tested smart operating features still offered as standard on the TL38.70HF AGRI – the SMS (Speed Management System), which allows the travel speed to be adjusted independently of the engine speed; the SHS (Smart Handling System), which allows the speed of the boom movements (lifting, telescoping and tilting) to be adjusted, depending on the type of work being carried out; AFM (Auxiliary Flow Management), which allows the hydraulic output to be adjusted to match attachment requirements and to set a continuous flow and the FCS (Fast Connect System), which provides quick and easy interchange of hydraulic attachments via an integrated pressure-release system.

Another standard feature is the ECO mode, which maintains optimum hydraulic performance without using the engine's full power, adjusting the main machine features to produce a balance between top performance and providing the best performance/fuel consumption ratio.



www.hub-4.com/directory/6960



OPTIMIZED PRODUCTIVITY MAXIMUM RETURN ON INVESTMENT

The Volvo EC750E is purpose-built to perfectly combine power and stability. This 75 tonne crawler excavator features innovative electro-hydraulic technology that works in tandem with the advanced ECO mode to reduce internal losses in the hydraulic circuit with no loss of performance. Combine this with Volvo's Tier 4 Final/Stage IV compliant D16 engine that simultaneously delivers increased horsepower with industry-leading fuel efficiency and the EC750E is the smart choice for your business, providing you with greater profitability and increased productivity for years to come. **Building Tomorrow.**

Volvo Construction Equipment Division
Volvo Group UK Ltd
Duxford, Cambridge CB22 4QX
Telephone: 01223 836636 Fax: 01223 832357
sales.vcegb@volvo.com www.volvoce.co.uk

Volvo Construction Equipment



CMB improve efficiency with the supply of two new screens for Tarmac Meriden

Leading quarry plant manufacturer CMB International have recently replaced two screens for Tarmac Meriden.

Based near the village of Meriden, near Coventry the busy site has been in operation for 30 years and supplies sand and gravel to the local area.

Currently the plant is producing 20,000 tons per month and has been upgraded by CMB International who have replaced two aged screens.

Lea Woodward – Assistant Quarry Manager, commented, “We were having issues with both screens and after a successful quote we gave the project to CMB to replace both on a ‘like for like’ basis. One of the screens was cable suspended at the rear and it was important that both screens were bespoke, to fit onto the original mounting points.”

Having completed a thorough site inspection CMB designed two new bespoke screens which were fitted and commissioned in the agreed time frame by S.P Services.

Liam Holland – General Manager, commented, “We had to replace a Niagara triple deck which was cable suspended rather than being mounted on support spring mounts. Supplying bespoke screens to fit within an existing footprint is one of our specialities; our in-house design team produced new drawings and the screen was manufactured and assembled in our Ravenstone facility.”

CMB supplied a new replacement ‘Niagara style’ four bearing 1.2 x 3.1m screen which was cable suspended at the rear with only two decks as one of the decks on the existing screen was not being used. A new live frame, underpan and discharge chute completed the installation. This screen acts as the primary and removes the oversize and feeds washed material to the wash barrel.

The second screen, a 1.5 x 4.1m double deck wash screen splits the products into 10mm and 20mm and feeds material to conveyors where the material is stockpiled. This screen was replaced by a CMB low angle screen along with new underpans and chute work. Both screens were fitted the new Tema WS2.1 magnetic system.

Lea, commented, “We were very impressed with the installation team, all their procedures were spot-on and they were a very professional team and completed the replacement in the allocated time frame.”

CMB Horizontal Screens

Horizontal or low-angle screens are ideal where height is critical. With one, two, three or four decks possible the screens can be used for sizing or scalping applications. The CMB size range is 1220 x 2500 (4' x 8') to 1500 x 9600 (8' x 30').

Features:

- The straight-line vibrating motion is produced by two or more eccentric shafts geared together. By varying the timing of the gears, the vibrating motion can be fine-tuned to assist optimum screening of various aggregates.
- Oil lubricated vibrator unit. Counter-weighted shafts are geared together and mounted on spherical roller bearings.
- Coil springs efficiently isolate the screen from its supporting structure
- Decks are rigidly constructed from generously sized box section. Unlike I section, box section eliminates trapped material which causes wear to the cross member.

In addition, CMB screens offer the benefit of friction checks which are built into the screen supports and efficiently retard the screen during shut-down, thus reducing forces transmitted to surrounding structures.

The CMB design also incorporates a generous height between decks to allow for easier screening media changes. When spray-bars are required, these can be built into the screen side-plates eliminating spray-bar supports, thus improving maintenance access.

About:

CMB International provide the complete solution to your quarry plant requirements. We manufacture our own feeders, jaw crushers, cone crushers, screens and conveyors. In addition, we carry a comprehensive stock of spares and offer on-site maintenance and modifications for your existing plant. Our experience enables us to repair and refurbish plant produced by all the leading manufacturers including Terex-Pegson, Metso, Sandvick, Symonds, Nordberg, Parker, Niagara and Terex Finlay.



www.hub-4.com/directory/185

SCG relocate after 10 years of successful trading

Recently in Scotland the HUB team visited SCG Supplies; a company that has grown and grown from very small acorns...

Celebrating their 10th year of successful business SCG Supplies have re-located to new premises in Airdrie, Scotland.

Founded by Stephen Grieve the business initially operated from his garage, before moving to commercial premises after a brief period.

Stephen, commented, "I was selling spare parts for major brands like Powerscreen, Sandvik, Finlay and the business grew rapidly, so before long we rented premises to accommodate the stock. During the global economic crisis, the directors looked to broaden the scope of the business by attending The Scottish Enterprise Exporter Programme to help establish the export side of the business which has over time become very successful.



This latest move to Airdrie comes as a celebration of those ten years and a re-investment in the business and with a footprint of three quarters of an acre the new premises are ideal to accommodate further growth and the portfolio of brands they now represent.

Fellow Director Paul Thorne, commented, "We have had a lot of success with the excellent brands that we represent, which is mainly down to our diverse knowledge of crushing, screening and washing aggregates. Being a parts dealer initially has also provided us with the base knowledge of aggregate processing machines in the marketplace."

Paul continued, "We have recently been appointed the dealer for Tesab

in Scotland which stands well alongside our long-standing relationships with Portafill International, Bruce Engineering and Screenpod."

It is very rare to find a dealer that is involved in all areas of crushing and screening and washing equipment, however as Paul pointed out there has been a partnership on the development of the Bruce Washpod and the Recycling Waterbath product ranges which led to SCG representing Bruce in the whole of the UK. This 'washing' experience combined with years of knowledge of the crushing business has positioned SCG prominently as a dealer of four major OEM's in Scotland.



Paul, continued, "We have had immediate success with Portafill as demand has been very high and it will be some months before we have any stock machines available as up to now machines have had to go straight to customers. Portafill has been a very good match for our business and although we have been approached in the past from other companies, this was one brand we knew was right. We are literally the closest dealer to the factory in Dungannon where they manufacture a complete range of robust mobile screening equipment which has become synonymous with quality, reliability and durability."

Success has become a major part of their business and SCG have recently started to add more service staff to deal with the increase in machines in the field.

Confidence in SCG has certainly spread around as they have recently sold a Tesab machine to one of the largest companies in Scotland – W.H.Malcolm; for crushing duties at their Loanhead Quarry near Glasgow.

W.H.Malcolm have made considerable investment in crushing and screening equipment and this latest acquisition, a Tesab 800i Mobile Jaw Crusher has been sourced through the SCG dealership.

Replacing an older machine, the 800i will be operating as a primary crusher feeding a secondary cone in the quarry processing line.



Malcolm Construction operate a modern and versatile fleet of mobile crushing plants, screens and associated equipment capable of processing quarried material as well as construction and demolition waste. Loanhead produces a full range of aggregate products aimed at the construction industry in the West of Scotland.

Paul, further commented, "It's a first for them and we believe they will be very happy with the machine they have invested

in! W.H. Malcolm have a long-standing reputation for quality and service and the Tesab 800i will enhance their machine fleet. One of the main benefits of the 800i is the simplicity of operation; A Cat C13 Tier 3 engine driving a strong crusher through a KTPO trans fluid clutch".



Tesab 800i Jaw Crusher:

Based on the proven 10580, the New 800i delivered to W.H.Malcolm is designed specifically to crush as blasted rock at the quarry face.

Now featuring Tesab's new and improved step deck vibrating feeders which are designed to improve material separation on damp or wet material, it also boasts an additional 2-deck independent Pre-Screen for increased production making the 800i an exceptionally efficient rock crusher.

The 800i can be fed by excavator as a 'stand-alone' unit and can also integrate easily into the Tesab range of secondary crushers and screens.

The Tesab 800i Mobile Jaw Crusher has an enviable production rate of up to 400tph and clearly is a machine that is engineered for power, built to last and designed specifically for the quarry market.

The future:

With the investment made in new premises and a comprehensive OEM portfolio combined with a vibrant order book the next stage of growth for SCG beckons. Whether crushing, screening or washing aggregates, in terms of processing SCG have the machine you need.



RWM

Building a resource
efficient future

IN PARTNERSHIP WITH  CIWM

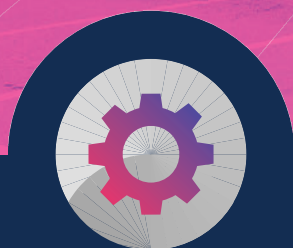


Turning Materials into Money.

Maximise recovery rates and minimise landfill reliance by sourcing the latest solutions from **Molson Group, Yilmaz, Capital Compactors, Stadler UK Ltd** and many more.

Join us in September and gain access to over 60 hours of content across five free-to-attend theatres, with experts from companies including **Coca Cola, John Lewis, Marks & Spencer, DELL, Adnams** and many more.

12-14 SEPTEMBER 2017 | NEC BIRMINGHAM



**MACHINERY
& EQUIPMENT**

SHOW SECTORS: ENERGY FROM WASTE | HANDLING & LOGISTICS |
RECYCLERS & REPROCESSORS | DATA, TECH & SERVICES | SUPPLY & DEMAND.

REGISTER FOR FREE ENTRY AT **rwmexhibition.com**

Matpro Machinery delivers two new Steelweld Strobe ECS 1500 machines to Brooke Energy after successful hire period with CRJ Services

Matpro Machinery has recently equipped leading UK wood biomass organisation Brooke Energy with two brand new Strobe, eddy current separators.

Manufactured by Steelweld Enviro Products Ltd, the Strobe ECS1500 is the latest mobile eddy current separator on the market, which separates ferrous and non-ferrous metals for a variety of applications.

Both Strobe machines are currently installed at Brooke Energy's two wood processing facilities situated in Exeter and Winchester, which both in turn, help feed its 5 biomass facilities located in Exeter (x2), Taunton, Winchester and Pontypool.

Brooke Energy presently burns up to 70,000 tons of waste wood per year and heavily relies on high quality, metal-free material to be presented to the furnace.

Glyn Brooke at Brooke Energy commented; "In the earlier years we experienced continuous problems with aluminium in the fuel, whereby it repeatedly melted in the heat of the furnace causing us complications. Operational difficulties at the furnace grate meant we needed a swift solution to remove all aluminium from the process".

As an immediate solution, Brooke Energy sought out to eradicate the problem through a hire-purchase from CRJ Services. CRJ initially supplied the company with a HOGMAG eddy current system, however after lengthy discussions between Glyn and CRJ Director Rob Symons, they mutually decided a more longer-term solution was required.

As the UK's exclusive dealer for Steelweld Enviro Products, CRJ's sister company Matpro Machinery was able to supply Brooke Energy with the new Strobe ECS1500 for an initial one week trial period. The trial proved successful and Brooke Energy decided to purchase two of the units for its wood processing facilities in the South of England.

Glyn Brooke at Brooke Energy further commented; "The two strobe machines are working tremendously well, as expected from something supplied through the CRJ organisation. Rob's continual support, honesty and level of customer service has been exceptional, and I have been truly impressed by the overall performance and reliability of the machines since their installation".

Rob Symons at CRJ Services commented; "Together with Matpro Machinery, we are happy to have provided Brooke Energy with both short and long-term solutions for their material processing requirements. The Strobe ECS 1500 is a fantastic machine, which we are proud to have assisted in the development. It has met and exceeded all expectations so far, with a significant advantage of having a low infeed height which means it can be directly fed from a screener, which is currently a major struggle with other separators operating in our marketplace".



www.hub-4.com/directory/8662

Experience the Progress.



Material handling equipment

- Maximum efficiency through progressive technology
- Sophisticated machine concept for maximum productivity
- Quality components manufactured by Liebherr
- Ergonomic workspace for consistent high performance

Liebherr-Great Britain Ltd.
Normandy Lane, Stratton Business Park
Biggleswade, SG18 8QB
Phone: +44 1767 60 21 00
E-mail: info.lgb@liebherr.com
www.facebook.com/LiebherrConstruction
www.liebherr.co.uk

LIEBHERR

Permanently moving forward at Eriez Europe

The permanent suspended overband magnet is a magnetic separator that is well-established within the Eriez portfolio. Uncomplicated in design and operation, it offers a straightforward solution for tramp iron removal from conveyor belts in a wide variety of applications. Magnets of this type offer a cost-effective solution for metal recovery, with selling prices from just a few thousand pounds.

Eriez Europe typically manufactures at least 30 of these separators per week, with a dedicated full-time team for this particular product line. Magnets are available to suit a wide range of belt widths and operating parameters, but the bulk of sales for these magnets are to the mobile crushing and screening sector. These are customers who have traditionally required a low-cost unit that achieves basic tramp iron removal, such as removing steel rebar from crushed concrete at typical operating gaps of 250mm-350mm. They are now also widely used across the whole recycling sector.

The mobile crushing market has seen difficult market conditions for their traditional mining customer base since the credit crunch of 2008/2009. In recent years, efforts have been made to diversify into other sectors, with particular emphasis on recycling. This means a more diverse range of feed materials being handled and a corresponding need for more diversity in magnet design and performance. The suspended magnets now need to work in more complex and wider ranging conditions whilst still meeting the low cost/high volume stipulations of these customers.

Acknowledging the change in market requirements Eriez Europe has focused recent developments on producing higher gradient multi-pole magnet blocks coupled with more compact, lighter weight and streamlined self-cleaning arrangements.

The twin and multi pole magnet configurations that have been developed generate much higher gradient magnetic fields than the basic single pole designs. They are therefore better able to remove smaller items such as nails and washers from feed materials. These magnets can also lift iron in a horizontal orientation, thereby drastically reducing belt wear. Iron is far less likely to embed in the self-cleaning belt than



with a standard vertical lift orientation, particularly in the case of small sharp items like nails.

In terms of mechanical structure Eriez has moved away from an external frame to an internal frame arrangement. This offers multiple benefits, including simplified belt change procedures, reduced overall size and less weight. Weight reduction is a critical factor for many of the lighter weight crushers and shredders that are commonplace in the recycling sector. The new units are also more aesthetically pleasing with a more streamlined and up-to-date look.

Sarah Grain, Sales Manager at Eriez Europe comments: "Feedback from our customers has been very positive. The new improved designs are opening up new sales opportunities for us throughout our European territories. We will not be assigning our old style units to the scrap heap just yet, but we are rolling out our improved designs with old and new customers alike."



www.hub-4.com/directory/280



COMPACTORS
statics SHREDDERS TIPPERS
SERVICE
portables CONVEYORS

CALL: 01536 765037



www.amberbale.co.uk

UNOTech
EXCLUSIVE UK AGENT

BALERS
Fully autos
Semi autos
Verticals



Fletchers Metals and Waste Recycling invest in a trio of TEREX® Ecotec machines

Founded by Richard Fletcher in 1982, Fletchers Metals and Waste Recycling (FMWR) has grown to become a one of the leading waste management and skip hire companies in South Yorkshire and Derbyshire regions.

Based in Sheffield, South Yorkshire the company originally processed scrap metal, but more recent times have seen a bigger focus on waste recycling, comprising mainly C&D, general dry waste and a small amount of hazardous material.

With local council contracts recent growth has been rapid and within a period of 2.1/2 years monthly tonnages have leapt from 3,500 to 8,000 tonnes per month.

Richard Fletcher – MD, takes up the story, “As a business we have always dedicated ourselves to improve practice and service within the waste management industry, fully complying with changes in legislation to offer more sustainable forms of recycling and waste disposal. FMWR has no direct interest in either landfill or incineration and consequently offer an eco-friendly way of disposing waste. This strong emphasis on eco-friendly waste solutions has also dictated our business relationships with similarly minded and trusted suppliers. Our recent investment in new TEREX® Ecotec equipment reflects our desire to maximise the efficiency and increase throughput in our very busy waste processing operation.”



Investing in increased efficiency:

After researching the market FMWR approached Warwick Ward and after consultation and demonstration an order was placed for a TEREX® Fuchs TWH 226 Waste Handler.

Warwick Ward are a UK distributor for the full TEREX® Ecotec Range. Founded in 1970 by Mr Warwick Ward the company has grown into the largest stockist and supplier of new & used wheel loaders, earthmoving equipment, waste recycling equipment and spare parts in Europe.

Ashley Ward – MD, Warwick Ward, commented, “Richard is operating a very busy operation and needed to increase production capacity and after demonstration and the offer of a very competitive package he was very happy to invest in a TEREX® Fuchs TWH 226 Waste Handler fitted with a 5-tine grab. This is a very rugged purpose-built machine with a reach of 10.7 metres and features an automatic central lubrication system on the upper carriage which ensures that the loading equipment and slewing ring are evenly supplied with a pre-defined quantity of lubricant at precisely determined intervals. This improves the productivity of the machine, reduces repair and





replacement part costs which occur because of lubrication related bearing failure, and most of all, reduce costly service downtime."

Now part of the FMWR machine team the TEREX® Fuchs TWH 226 Waste Handler is handling the increased material flow, proving its credentials as a smooth, rugged and manoeuvrable waste handling machine.

Increased throughput:

Following the purchase of the Waste Handler, FMWR made the decision to invest in further TEREX® Ecotec machines and Warwick Ward subsequently supplied a TDS 820 Tracked Slow Speed Shredder and a Wheeled TTS 620 Trommel for FMWR processing operation.



The TDS 820 is an aggressive slow speed shredder suitable for all types of material and is capable of processing very difficult material in one pass down to 150mm. Customisable shredding programmes allow operators to configure the machine to their specific requirements, reducing wrappage and maximising production.

Richard, further commented, "We looked at all the machines on the market and for us the TEREX® shredder was the best machine. It is very well designed and it does exactly what we wanted to achieve. With plenty of confidence in support from Warwick Ward when required, coupled with a very competitive price it made it a 'no brainer' and a very sound investment!"

Feed for the shredder originates from a pre-sort system, where incoming waste is tipped in the yard, and then processed through a big static trommel where the heavy material goes over onto a picking line. Here material is hand-picked with the remainder going to the new TEREX® TDS 820 Slow Speed Shredder where it is processed in one pass down to 150mm.

Purchased as an add-on to the existing processing line the TEREX® TDS 820 Slow Speed Shredder has brought more value to the operation by producing a saleable RDF product. Before its inclusion there were too many contaminants and dirt for the previous shredder to achieve what was needed. The old shredder could not provide an adequate desired reduction but with the new TDS 820 now installed in the line a constant 150mm is achieved.

A league of its own:

Warwick Ward supplied a third machine, in the shape of a TEREX® TTS 620 Wheeled Trommel which offers operators unrivalled application flexibility, production rates and serviceability. Easy to configure through a push button control panel the 6 metre long TTS 620 features an intelligent feeder control system, which continually adjusts the feeder speed to optimize screening rates. Double-sided unrestricted drum access makes changing the screening drum a simple process which is achievable in minutes, and with the design allowing many other manufacturers screening drums to be utilised the TTS 620 smoothly integrates into established fleets.

Ashley, commented further, "Generally trommels' are simple, but the TEREX® trommel has design features which allow easy maintenance through swing mechanisms, which for us bring it into a league of its own. From a maintenance perspective, access is easy to the engine via a swing out cradle and with the unrestricted drum access it's a very well designed and engineered machine from a worldwide recognised brand."

Richard, added, "It's a simple mechanism and there isn't much that can go wrong. But our fitters loved the maintenance design features, the easy and simple access just sold it to us – a big plus!"

This final addition to the processing line has further increased the capacity of the waste operation with an integral modular conveyor providing a stockpile of an RDF material.

With the FMWR operation now fully on-line the TEREX® Ecotec machines have taken things into their stride and seamlessly integrated into the busy processing line and provided the optimisation and development of the business needs of a leading waste processing company.



www.hub-4.com/directory/888



IT'S AS SIMPLE AS THIS
WE MAXIMISE WASTE RECOVERY & MINIMISE DOWNTIME



**ROBUST & RELIABLE WASTE
PROCESSING SOLUTIONS FOR
CUSTOMERS WHO KEEP COMING
BACK FOR MORE**

**UNPARALLELED
PERFORMANCE**

www.crsni.com
sales@crsni.com T: 028 80760 496



Tomra Sorting launches new technology at RWM 2017 (stand 4L20-M21)

Global sensor-based sorting specialist, **TOMRA Sorting Recycling**, will demonstrate the latest additions to its range of technologies available for the UK market at RWM in September this year. Coinciding with its 10th anniversary in the UK, **TOMRA** will launch its new **AUTOSORT LASER** for glass and introduce laser-induced breakdown spectroscopy (LIBS) and the newly updated **X-TRACT**, two new additions to **TOMRA's** metals sorting portfolio.



TOMRA will launch AUTOSORT LASER which can help to recover more than 95 per cent of glass from fresh municipal waste.

Another new introduction to the UK market is TOMRA's LIBS-based sensor sorting technology. TOMRA's new technology, for the first time, can sort and separate different aluminium wrought alloys and achieve high levels of separation efficiency. Sorting accuracies range above 99% purity with throughputs of between 3 and 7 tons per hour, depending on the input characteristics and bulk density of the material to be sorted.

In addition to its LIBS technology, TOMRA will showcase the newly updated X-TRACT at RWM. By combining X-ray transmission (XRT) and DUOLINE® technology, the X-TRACT separates a variety of metals with high precision, so that purities of 98-99% can be achieved, even from a most varied mix and with small grain sizes.

TOMRA is an international company with strong national support structures in the key markets. Brian Gist, global sales director, metals comments: "In 2007 we started with only three employees. Today, the company has a team of 17 UK-based specialists.

"Over the last ten years, more than 300 TOMRA sorting units have been installed in over 80 per cent of all MRFs of the UK. This is an achievement we are very proud of." Brian Gist and his team will be on hand at stand 4L20-M21 to explain TOMRA's sorting technology and its application in detail and answer visitors' questions.



www.hub-4.com/directory/17393

KIVERCO COMPACT AN ALTERNATIVE WAY TO PROCESS WASTE



- Easy set up within hours.
- Ideal for projects where space is at a premium.
- Rapid relocation in a compact & flexible layout.
- Select components to fit your application.
- Process up to 150m³/hr*

* Depending on material



Designed for the small to medium waste processing operator or mobile contractor. This plant gives all the benefits of a high performance static plant.

WATCH SET UP VIDEO



KIVERCO
RECYCLING PLANT

CALL: +44 (0) 28 8773 8811 - EMAIL: sales@kiverco.com

www.kiverco.com

**BUILT WITH
BACKBONE**



MOBILE EQUIPMENT FOR EVERY APPLICATION

TDS 820

SLOW SPEED SHREDDER



- Aggressive independent double shafts - 2m, 500tph
- User-friendly display with customisable shredding programs
- Excellent service access

TTS 520-3

THREE FRACTION TROMMEL SCREEN



- Disc screen for oversize separation
- Full length hopper for loader feeding
- Drum size 5.0m x 2.0m

www.terex.com/ecotec



Shredders you can trust.

+44 (0) 28 7965 0050
ulstershredders.com

Visit us at The RWM Exhibition
12-14 September 2017
NEC Birmingham, Stand 5P52



Molson Green supply Bryn Group with a Sennebogen 821E and improve efficiency



South Wales multi-disciplinary waste, quarrying and recycling company Bryn Group has revamped its fleet with the introduction of a new materials handler.

It has taken a Sennebogen 821E machine to help pick, sort and process material at the firm's base in Hengoed near Treharris in South Wales.

The company is a longstanding Molson Green customer and this latest machine replaces a modified Hyundai excavator that had been working in the waste shed.

In a departure from the norm the Sennebogen has been supplied with a tracked crawler undercarriage, a ploy specific to the Bryn Group team requirements according to area sales manager Luke Mercer.

"We had a look at what they wanted the machine to do. The company has extensive facilities which include a huge shed that covers its waste pile. In smaller operations, the waste pile is accessed using a wheeled machine but that can make it difficult to reach across the pile. The tracked machine can actually get on top of the pile and select material from all parts. It means the waste operation is much more efficient and is worked continually," says Luke.

Powered by a Cummins QSB 4.5 diesel engine the Sennebogen 821E offers exceptional fuel efficiency with up to 20% fuel savings when working in its ECO Mode with reduced engine speed. Its operating weight of approximately 24tonnes depending on carriage option and attachment the 821E has an extending cab that can elevate to almost 6m above ground level offering superb all-round visibility for the operator. It has a total transport length of around 10m – again depending on carriage and arm with a body transport width of approximately 2.5m.



The Bryn Group has taken its Sennebogen with a specialist attachment from another Molson Green partner company, manufacturer NPK.

It offers attachments to the demolition and waste handling sectors and the Bryn Group Sennebogen 821E has been coupled with an NPK DG20 Selector Grab which boasts an open jaw gape of 2.05m, depth of 1.28m and width of 950mm.

"The latest set up it has with the Sennebogen 821E and the NPK Selector Grab means Bryn Group now has a machine that specialises in materials handling for its waste operation but is also flexible enough to work on the firm's agriculture and wood recycling plant if required," says Luke.



www.hub-4.com/directory/17705

INTRODUCING THE PORTAFILL 3000 WASHPLANT

Produces 2 Grades Of Washed Gravel and 1 Grade Of Washed Sand / Extremely Small Footprint / Transportable On One Trailer



Riverside Machinery Ltd.
Email: sales@riverside-machinery.com Main: +44 (0) 800 689 9024
Web: www.riverside-machinery.com 24hr hotline: +44 (0)7766 405688

PORTAFILL
RIVERSIDE MACHINERY

Improve site efficiency, protect against fraud and increase profitability.

Avery Weigh-Tronix

Our new intelligent weighbridge software applications use our ZM510 multifunctional indicator at the core and provide:

- ✓ A complete weighbridge management system, including an anti-fraud option
- ✓ A flexible and simple solution designed to maximise your operational efficiency
- ✓ Programmable reminders for calibration maintenance and cleaning
- ✓ All-inclusive service cover option with BridgeCare Total

Call us today: 0845 307 0314

Our all-inclusive service cover offers a 97% uptime guarantee. See page 11

www.averyweigh-tronix.com

Screening and shredding technology from Eggersmann for processing wood and bio-waste

The Eggersmann Group has a wide-reaching product portfolio of high-performance shredders, screening machines and windsifters at its disposal to treat all kinds of materials. To process wood and bio-waste the company offers multiple solutions of well-known brands.



FORUS Pre-Shredder SE 250.



TEUTON Z 55 with Trommel Screen T 60.



TEUTON Z 55 with Terra Select Star Screen S 60.

An increase of waste wood and bio mass is expected in shredding and screening. For this reason, the demands in throughput and flexibility of the machines are high.

In the field of waste wood shredding, there is an increased demand for one end-product, in one operation – smaller than 150 mm and not contaminated. In addition, in the treatment of biomass the purity of variety as well as the ease of separation of the end product and adhesions is a deciding factor. It is also important to keep the operating costs of the machines at a low level. Compact, slow-speed shredders are the best option to meet these requirements.

FORUS concentrates its actions within the Eggersmann Group on the further development of slow-speed shredding. To create a broad application area, the FORUS shredders are offered with a classical synchronized shredding or the asynchronous shredding process. These machines consist mostly of universal dual shaft shredders at the market entry-level.

With the TEUTON Z 55, the Eggersmann Group offers a premium class single-shaft shredder that can be used in the most diverse applications. The machine is usable from pre-shredding to creating a clean end-product, and also offers high throughputs.

Terra Select, a company that also belongs to Eggersmann Group, is a specialist for screening and separation technology and has a wide array of machines for the processing of wood and biomass. The star screen S 60 is designed for high-volume streams and can refine the fine grain of <10 mm, including a coarse grain of 150 mm in one operation, producing a marketable product. Feeding the S 60 can be done by a wheel loader or the TEUTON shredder.

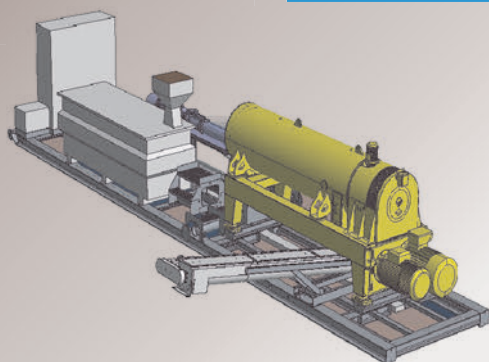
If three fractions in one operation are required, then the selection of a trommel instead of star screening; then the double-trommel devices of Terra Select are the correct choice. The double trommel screen DT 60 is perfectly suited for volumes up to 120 m³/h and refines fine and coarse grain in one step. In woodchips, a fine grain screening from < 4 mm, 4-25 mm and > 25 mm is possible.

The last step in processing waste wood or biomass as fuel is mostly the separation of impurities – especially stones. For this kind of task, the Terra Select windsifter W 80 is the best match.

BESPOKE DEHYDRATION SYSTEMS



skid-mounted unit



containerized unit



Design | Production | Sale | Spares | Assistance

- fast set up
- small footprint
- safe, clean and environmentally friendly

Baioni Crushing Plants SpA

UK: +44 7765035460

ITALY: +39 071.7950313

baioni@baioni.it

baioni.com - baionienvironment.com



Joining Forces for a Better Separation



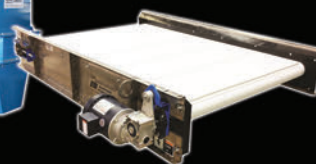
Drum Magnets



Overband Magnets



Eddy Current Separators



Stainless Steel Separators

See us at RWM - Stand 5P80

www.mastermagnets.com

www.buntingeurope.com

Kiverco's robust equipment stands the test of time

Kiverco have always been proud of their solid and robust recycling equipment. This renowned, long-lasting quality was evident during a recent recycling plant installation where the customer, Weir Waste, requested to incorporate their old Kiverco equipment with the new equipment being installed at their recycling plant at Oldbury.



Weir Waste, one of the UK's major waste recycling processors, recently commissioned Kiverco to design, build and install a new Construction & Demolition (C&D) recycling plant at their Oldbury site. Having experienced excellent service life from their original plant, they requested that the perfectly functioning 10-year-old Kiverco Pan Feeder and 830 Trommel, were to be incorporated into the new plant.

Like all Kiverco projects, a detailed project plan and installation programme were set in place, which enabled the new Weir Waste recycling plant to be erected, without the two key components. These were then removed from the existing plant, by Kiverco engineers, before being installed, on the same day, at the new location. It was vitally important that the original plant was operating until the last possible moment, which would minimise downtime and loss of production.

These two components were tested to ensure their compatibility and their capability to work with the new plant. Needless to say, they passed with flying colours!

Jason Shaw
Processing Manager at Weir Waste says, "When Weir Waste first located to the new site in Oldbury four years ago, we chose Kiverco to design, build and install a new semi-automated 25TPH Commercial and Industrial (C&I) Waste recycling facility. The plant has been instrumental to our growth and has contributed to the many contract wins we have enjoyed over the last 4 years. When it came for the need to install a new C & D line, there was only one choice."

John Lines, Sales and Marketing Director, Kiverco says "We were delighted to be chosen by Weir Waste to handle this project for them. We have long talked about our robust and solid equipment, so we knew that the Trommel and Pan Feeder would give them many more years of service, so it made perfect commercial sense to use them again. As always, our installation team were extremely capable of dealing with the different challenges of this project and we are proud of the result we achieved."



www.hub-4.com/directory/15003



RUD Chains Ltd Robust Conveyors For Bulk Materials Handling

- BULKOS Conveyors Include: Scraper, Screw, Drag Chain Conveyors & Apron feeders
- Horizontal, Vertical & Inclined Bulk Handling Capabilities
- Robust & Wear Resistant Round Link Steel Chain
- Standard & Bespoke Conveyors, Bucket Elevators & Spare Parts Available On Request
- Bulk Handling for Quarrying, Recycling, Construction, Cement, Power Stations, Mining & more

www.rud.co.uk 01227 276611

RUD Chains Ltd, Units 10-14, John Wilson Business Park, Thanet Way, Whitstable, Kent, CT5 3QT



PROVEN RELIABILITY

240,000+ products sold yearly
10,000+ active customers
50+ countries direct presence

18 OLI subsidiaries
ALL OVER THE WORLD



ELECTRIC MOTOVIBRATORS PNEUMATIC VIBRATORS AND FLOW AIDS

CONVEYING . FEEDING . SCREENING . EMPTYING . CLEANING



Olivibra UK Limited - Unit 8B , Wilford Industrial Estate - Nottingham - Nottinghamshire - NG11 7EP
TEL +44(0)115 982 5064 - FAX +44(0)115 982 7180 - www.olivibra.com - sales@olivibra.co.uk

Interlocking Concrete Blocks for retaining wall structures

For many years the options for engineers specifying retaining wall structures have been limited to time consuming and often expensive solutions such as gabion baskets or crib-wall systems. However, over the last few years more and more retaining wall projects are being completed in record times and below forecast costs by choosing interlocking blocks.

Interlocking concrete "lego" style blocks (provided they are cast in accordance with BS EN 15258:2008) have a number of advantages over more traditional systems –

Speed

Retaining wall projects are often time critical – not only for cost reasons but also for reasons of safety in that open excavations are relatively unstable and liable to collapse. Similarly retaining wall structures are often required to repair land slips and of course in these cases every day taken to complete the repair can cost huge sums of money. Interlocking blocks are incredibly quick to install (often over 100m² per day is achieved) and moreover, the method of installing the blocks means that personnel are not exposed to the risk of being trapped by embankment failure.

Cost

Quick installation (see above) is by its nature a relatively low cost approach. However the interlocking elements themselves are usually cheaper than alternative materials because they are mass produced in standard sizes. Direct cost comparisons have shown that interlocking block solutions are on average 75% of the cost of more traditional systems.

Availability

Modular block systems are mass produced in large numbers for a huge variety of project types. They are therefore always available directly off-the shelf enabling large projects to be completed extremely quickly – avoiding long lead time or waiting for a cast in-situ solution to cure.

Flexibility

Interlocking concrete blocks offer great flexibility in terms of the finish that can be achieved. Whilst many clients choose



the standard smooth concrete finish – the blocks can easily be clad in brick, natural block / stone or rendered, according to the requirements of the local planning or conservation officers.



www.hub-4.com/directory/13231

MAGNAPOWER

- Eddy Current Separation Plant
- Vibratory feeder and Rare Earth Drum Magnet
- Guaranteed Performance - full test facility
- 600-2000mm wide
- Outdoor/Indoor use
- Outfeed Conveyor

W: www.magnapower.co.uk
E: info@magnapower.co.uk
T: +44 01527 557092

Call Now
for best
prices

guaranteed



Made for Motion



Empowering Hydraulic Power

KTR manufacture a range of couplings and hydraulic components critical to hydraulic power. KTR designed the original jaw coupling in 1964 and since then ROTEX® has been the coupling of choice for connecting motors and pumps. KTR also offers a range of bellhousings, powerpack components, and ATEX approved oil/air blast coolers.



www.ktr.com

Bulk Handling Solutions...



Whatever the size of your engineering project **DUO Manufacturing** offer a complete package solution. We provide design, fabrication, assembly, and installation for the entire project including full support for the life of the plant.

Specialising in material handling systems, including aggregate and waste, **DUO Manufacturing** will accommodate even the more unusual requests. Some of our more diverse recent projects have included the construction of large filter presses and glass recycling systems.



DUO Manufacturing
Mendip Works, Leigh Road,
Chantry, Nr Frome, Somerset BA11 3LR
Tel: +44 (0)1373 836 451
Fax: +44 (0)1373 836 879
www.duopl.com



MHEA Excellence Awards are a 'significant endorsement.'



The entry deadline for the second MHEA Excellence Awards is just over five weeks away and the organisers are reminding all companies and individuals to enter.

Categories are: Innovation Award, Apprentice of the Year, Project of the Year and Supplier of the Year and entries can be made online or via a downloadable entry pack. Deadline for entries is 31st July 2017.

Last year's winner of Project of the Year was Midland Quarry Products Ltd (MQP), for uplifting and relocating the 1000 tonne Cliffe Hill Primary Crushing Station as a complete assembly.

On receiving the accolade, Bob Davies Engineering Manager, said: "We promoted the winning of this award internally among our staff and it was taken as a significant award by everyone. A project of this type and complexity hadn't been done before and our success in doing so became well-known within the industry.

"Being awarded Project of the Year by the MHEA puts Midland Quarry Products on the map with regards to the materials handling industry."

Michael Kaye, President of the MHEA, said: "MHEA Member companies and individual members can nominate themselves and non-members for one or more of the awards.

"Your contribution to the bulk materials handling industry is valued whether you work within bulk materials or an allied industry such as ports, steel, mining or cement.

"Entry is free and straightforward, so please do compile one or more. We want everyone to shout about their achievements over the last 12 months and offer them the opportunity to be recognised for their outstanding work."

To find out more, visit www.Bulkex.co.uk or contact the event team on 01787 226995.

KTR OAC "eco" - air blast coolers

KTR have extended its range of high-performance coolers by adding an energy-efficient series for 24 volt drives. The highlight of the recently developed eco coolers is a continuously variable speed control which adapts the demand for cooling power improving energy efficiently.

At the heart of the new eco series is a specifically developed control unit.

It measures the oil inlet temperature by means of a sensor and uses real time data to control the variable speed motor and achieve a more efficient cooling process.

The benefits of the continuously variable speed control are an optimized energy consumption which contributes significantly to savings in the life cycle costs of the machine.

In addition, it reduces the noise emission many times over, particularly at lower speeds. Subject to the specific usage demands on the motor and fan, the service life of the overall system is increased considerably.

Another special feature is the self-cleaning mode, which can be started at the touch of a button. Upon activation, the rotational direction of the fan is reversed for a 60 seconds period, creating a reversed airflow that cleans the cooling system from dust and dirt.

The electric motors used are specified according to protection class IP65. The maximum cooling power is 25 kW with a temperature difference of 40 °K. The application range of the new generation includes stationary hydraulics, as well as the high demands of marine hydraulics. The coolers are perfectly suited for those applications retrofitting existing machines with new cooling technology.

The coolers are available in KTR sizes 300, 400, 500 and 600 – sizes 700 and 800 available upon request. The electric motors used are specified according to protection class IP65. The maximum cooling power is 25 kW with a temperature difference of 40 °C.



 www.hub-4.com/directory/8290

ALL METALS RECOVERY

One complete solution for ferrous and non-ferrous separation



MAGNETIC DRUM
TO RECOVER
FERROUS METALS



WWW.ERIEZ.COM



VIBRATORY FEEDER TO
CONTROL MATERIAL FEED



ECS TO RECOVER
NON-FERROUS
METALS

ERIEZ MAGNETICS EUROPE LIMITED

Greenway, Bedwas House Industrial Estate,
Bedwas, Caerphilly, CF83 8YG, UK

T: +44 (0)29 2086 8501 | E: info@eriezeurope.co.uk



SEE US ON STAND 5P10-Q11

RGV Valve

advanced roller gate valve technology

- Self cleaning slide gate blade
- Fast and smooth blade action
- Able to support high product loads
- Bespoke square or rectangular valve outlets
- Available in a variety of materials and finishes
- All valve seals and guides can be replaced in-situ
- Sealed steel rollers as standard for extended service life
- Heavy duty construction ensures years of reliable operation



Visit us at BULKEX / 18 - 19 October 2017 - Stand 3

mucon.com
sales@mucon.com | +44 (0)1625 412000

New Rapidmix opens up a world of project opportunities for Andale Construction



In conjunction with its US sales partner, Rapid International USA, Inc, Rapid has recently supplied a Rapidmix 400CW mobile continuous concrete mixing plant to Andale Construction of Wichita, Kansas, USA. The Rapidmix 400CW has just completed the North Gate Improvement project, at the Port of Virginia's Norfolk International Terminals in Hampton, Virginia. Andale's Rapidmix is shortly due to commence a second infrastructure project for the NCDOT (North Carolina Department of Transportation).

Based in Wichita, Kansas, Andale Construction Inc. is a division of Andale Ready Mix Central, Inc and provides commercial and industrial construction services including roller compacted concrete, cement soil stabilization and dirt services.

Andale initially chose to rent the Rapidmix 400CW from Rapid International USA, Inc. for the purposes of production of RCC (roller compacted concrete) to complete the North Gate Improvement project at the Port of Virginia – a critical infrastructure project that aimed to improve throughput of trucks at NIT. The now successfully completed North Gate provides 26 lanes of ingress and egress to the terminal's North Berth – more than doubling the gate capacity at NIT. As a result of the great success Andale achieved with the Rapidmix on this project, the company made the decision to purchase the Rapidmix, as the machines high output capabilities and mobile ability would enable the company to target larger schemes and projects throughout the Wichita area and beyond.

Whilst discussing the Rapidmix's consistently high output capabilities, Matt Munsick, of Andale Construction, Inc, commented, "We were able to run the plant continuously at 400-425 tons per hour with our pig/silo. I have never been able to run that fast for a couple of hours, much less 8-9 hours without stopping! We averaged 1,800 cubic yards per

day with the Rapidmix 400CW and even hit 2,500 one day!"

Mr Munsick also proceeded to comment on the homogeneity of the concrete mix, stating that it was, "...very consistent out of our plant." Andale Construction were also greatly impressed with the machine's fast set up time, stating, "Everything set up in less than 2 hours, calibration took about that long excluding the wait time at the scales, and we were off and running."

Having recently successfully completed the North Gate project, Andale are set to move the Rapidmix on to its next assignment on an infrastructure related project for the NCDOT (North Carolina Department of Transportation).

The Rapidmix 400CW plant produces high quality controlled mixtures for utilisation in a range of applications – from airport runways and contaminated land treatment to dam construction and soil stabilisation. The mobile nature of the plant combined with the technically advanced design is most advantageous in meeting the supply and demand requirements on projects. The Rapidmix provides a cost effective solution on-site projects where high specification compliance coupled with a high volume fast throughput are essential.

Fully mobile and self-contained, the Rapidmix 400CW offers a complete plant powered by its own power source, with on-board compressor and generator. Fitted with a self-erecting system, using hydraulics, the plant can change from travel mode to fully operational within a few hours. Available with outputs of up to 600 tonnes per hour, the Rapidmix provides feed rates that are fully adjustable for the aggregate, cement and water systems.

The recently updated unit incorporates full weighing options for all materials - aggregates, cement and water - which means the new generation Rapidmix 400 CW offers record keeping that is automated, precise and detailed.



www.hub-4.com/directory/5066

SN ENGINEERING ENSURES DUST COMPLIANCE



Loading of bulk tankers, road or rail, can be a dusty experience, especially with fine particulate powders.

SN8000 *Outloader's* offer a dust free alternative.

The *big sister* to the ever popular SN7000 series, the SN8000 incorporates its own integral filter & extraction fan.

With captured dust being fully retained & returned to main product flow ensures updated systems can maintain a dust free loading environment and thus ensure clients compliance.

For further information &/or free site survey on dust free loading etc.. Contact : info@sneng.co.uk

RUD VABH-W & VCGH-S Excavator Hook For Welding



Ultimate Solution for attaching to spreader bars and beams:

RUD offer over 600 different tested and certified lifting and lashing points which cover a working load capacity range of 0.6 to 250 tonne. RUD's lifting equipment is used across a wide range of working environments from Heavy Lifting, Engineering, Materials Handling, Offshore, Construction, Rail, MOD and many more.

The RUD VABH-W & VCGH-S excavator hooks for welding offer the ultimate solution for attaching to spreader bars and beams, chain slings and for wire rope and round slings. They can also be used for lifting means with loop or oval suspension rings.

The RUD patented wear marking indicator helps highlight when the lifting equipment is no longer fit for service and needs to be replaced. Therefore, offering an ultimate safety factor to the user.

The VABH-W excavator hooks offer a safety factor of 4:1 and are operational from temperatures as low as -40° to plus 350°. The VCGH-S excavator hooks are operational to temperatures as low as -20° to plus 350°.

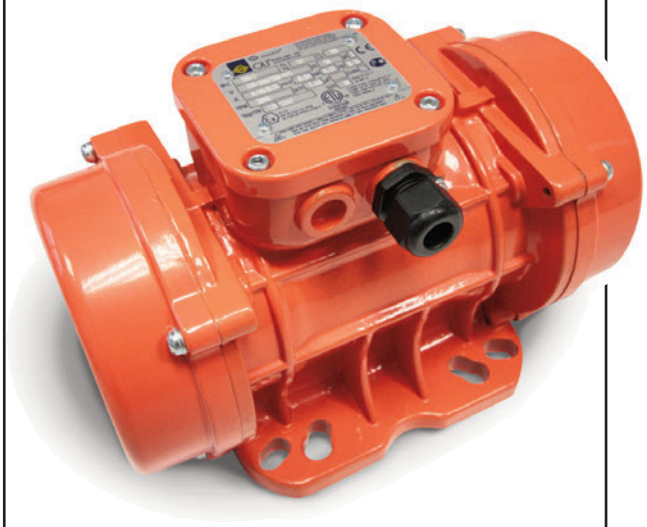
The RUD VABH-W & VCGH-S excavator hooks are typically attached to the buckets of wheel loaders in the quarrying industry, lifting of spreader beams in engineering, ship building and marine industries. They are also ideal for offering a quick connection to chain slings, wire rope and polyester slings.



www.hub-4.com/directory/16614

Vibration technology from a worldwide leader

OLIVIBRA UK part of OLIVIBRA S.p.A group and the Worldwide leader in vibration technology, founded in Italy in 1961. A wide range of products that satisfy the most demanding applications. Solutions for many sectors including quarrying is just one of OLI's focus.



OLI's vibrating motors comply with the latest INTERNATIONAL standards for use in Hazardous locations, such as Atex and UL normative. We match our competitor's footprint and allow easy retrofit of existing machines. OLI has been present in the UK market since 2013 and has now opened its latest official branch in Nottingham featuring local trained staff and a large warehouse, capable of matching the lead times requested from our customers. The key centre piece of OLI's business strategy is rapid stock delivery, any time, any place in the world.

For this purpose, three production sites were set up in the main regions of the world and subsidiaries were opened in 19 countries. In consequence of which the motto of our company "WHEN YOU NEED IT, WHERE YOU NEED IT" has a deeper meaning.

OLI's paramount objective is to establish a mutually beneficial relationship with our customers, who are a key influence in shaping the company's business model. Meeting the customers' needs is a priority, achieving a trustful partnership is the reward. By supplying competitive high-quality products for wide ranging applications, OLI combines performance and reliability by adapting to the ever-changing market. A strong believer in innovation, OLI is constantly striving to be ahead of the curve and new products are constantly being developed to complement our range.



www.hub-4.com/directory/17795

Ashcourt Group makes concrete investments with Liebherr

The Hull-based Ashcourt Group was established in 2009 and in 2015 purchased Robin Concrete and Waste Ltd. As well as enabling the Group to bring the supply and pumping of concrete in-house and to fulfil the need it identified for an efficient, reliable, independent concrete supplier. The Group has invested in a range of concrete mixers, pumps and a static batching plant from Liebherr in a programme of expansion, modernisation and standardisation.

The Hull-based Ashcourt Group consists of a diverse portfolio of companies covering a range of activities including property, construction, civil engineering, quarrying, plant hire, haulage and readymix concrete. The Group recognised that customers today are seeking a contractor that can deliver the complete package from pre-planning right through to completion. The fully integrated divisions of the Ashcourt Group enable it to offer a one-stop solution.

The Ashcourt Group has a wealth of experience in the construction industry and through this identified the need for an efficient, reliable, independent concrete supplier to focus on both the quality of products and the quality of customer service.

Investment in the former Robin Concrete and Waste Ltd business allowed the Group to bring the supply and pumping of concrete in-house and also provided it with a large tract of land to expand its operations further. The site at Foster Street, Hull is where the Group is now headquartered with all facets of the organisation under one roof.

The concrete side of the Ashcourt Group's business has been gradually modernising and expanding since the takeover in 2015. The company has invested heavily with Liebherr-Great Britain Ltd on the purchase of a range of mixers, concrete pumps and a static batching plant. "The area around Hull has traditionally been served by a number of small independent concrete suppliers with the majority of larger national companies staying away from the area," comments Ashcourt Group's Concrete Manager Steve Walsh. "Whilst the decision for the Group to enter the concrete market was to service our own requirements, we have a third of our annual concrete production going to outside contractors. We are looking to bring this closer to a 50-50 split as some of our larger

projects come online."

Having decided to standardise its mixer barrels by selecting a single manufacturer and following recommendations from other users, Liebherr was approached to supply the first of the company's fleet replacements and additions. "At the time of upgrading the fleet we were open to quotes from all manufacturers," explains Mr Walsh. "From my previous experience and industry comments, Liebherr was seen as the best manufacturer of mixer barrels available in the UK. The standardisation across our fleet makes it easier from a maintenance point of view, meaning we only have to have a single point of contact when it comes to sorting any issues out."



Favouring Volvo truck chassis throughout its other business arms, the Group purchased a number of chassis cabs from its local dealer before delivering them to Liebherr at Biggleswade for fitment of the HTM 704 and HTM 804 truckmixer bodies. Excellent build quality and reliability from the Liebherr mixer bodies over the three years they have been in use has seen the company return to Liebherr for a further 8 mixers to be mounted on Volvo FMX and FE chassis. "The operating system is straightforward and the drivers find them easy to use. Everything is well made and the installation on the chassis is first class. They are exactly what we want from a mixer," said Mr Walsh.

The mixer bodies are not the only purchase the company has made from Liebherr with Ashcourt Group recently taking delivery of a





37 Z4 XXT truck-mounted concrete pump on an 8 x 4 Mercedes chassis. Capable of a vertical reach of 38 m and horizontal reach of 32.8 m, the unit is fitted with Liebherr's XXT variable outrigger system that enables the machine to operate where conventional pumps cannot. The 37 Z4 XXT has the ability to deliver over 100 m³ per hour and can pump to a working range of 70% including over the operator's cab, a feature unique to Liebherr. The introduction of the pump into the fleet has benefitted the construction side of the company as it can now

provide the delivery of concrete and pumping services from a single source.

The company has recently commissioned its largest purchase from Liebherr in the shape of a Betomix 2.5 batching plant with a capability of over 100 m³ per hour. The plant was commissioned in January 2017 and allows the company to offer a more consistent and reliable service to its clients. The new batching plant will also offer savings on running costs as the efficient technology built into the installation means a lower cost per m³ produced while offering the flexibility of high volume capabilities.

According to Steve Walsh the high quality of the Liebherr products runs through the whole product line and that includes the back-up and service. "We have had very minor issues with the pump and batching plant but the way that Liebherr has attended to the faults reflects its high level of customer service," Mr Walsh concluded.



www.hub-4.com/directory/504

Promoflow

'shakes the contents - not the bin'

The answer to bridging, rat-holing and product segregation in bins, silos and hoppers

- Designed for any silo or hopper configuration
- Units can easily be fitted retrospectively
- Available with manual or automatic agitation controls
- Low energy consumption
- Easy to maintain
- Quiet Operation
- Available in Carbon or Stainless Steel



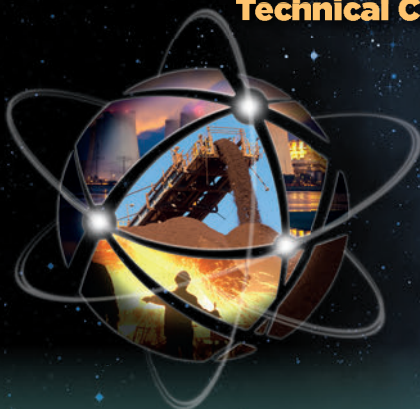
Visit us at BULKEX / 18 - 19 October 2017 - Stand 3

mucon.com
sales@mucon.com | +44 (0)1625 412000

BULKEX

NEW FOR 2017

Technical Conference • Awards Dinner • Exhibition
Nottingham 18-19 October



HIGH PROFILE SPEAKER PROGRAMME

- Hear presentations and insights with a technical focus by a line-up of eminent speakers on topical issues and key infrastructure projects.
- Join us to celebrate the achievements in materials handling at the evening awards ceremony and network with industry contacts.
- Get noticed! Take advantage of exhibition space and a range of sponsorship opportunities.

TO EXHIBIT AT OR SPONSOR THE EVENT

Contact the BULKEX events team on 01787 226995
or visit mhea.co.uk

REGISTER FOR YOUR TICKET AT MHEA.CO.UK



Additional Loading Facility to meet client's increased demand...



Another turnkey out loading installation nears completion. SN Engineering were commissioned to add a 2nd tanker out loading facility required due to the significant increase in demand.

Due, mainly to site constraints, the additional loading facility had to be fed from clients existing silos. The final design catered for an additional outlet from client's silo and via a flow control valve & large diameter screw the product is then fed back down the site via c 15m airslide to a new out loading structure. Loading is via SN Engineering's latest incarnation of its ever popular SN7000 series of loading bellows, the SN7001.

Dust free loading of the tankers is assured with the airslide & Outloader® being vented back to one of SNE's RJCompact series of high efficiency dust plants. Within the supply was a dedicated airslide blower & new, upsized, Aerzen silo aeration blower & associated pipework to ensure good & constant material flow. Tanker access is via a manual, lockable drop-down stair assembly c/w oversized perimeter safety hand railing to ensure operatives have a easy & safe access whilst working on the tanker top.

Our in house engineering department, utilizing the latest in 2 & 3D engineering software, ensure all projects are thoroughly evaluated and comply with best practice initiatives & full compliance with current UK safety & environmental standards.

The new tower was finished with contrasting cladding, including translucent sheets for natural light.



www.hub-4.com/directory/16525

HUB Features 2017-2018

Global News & Information on the Quarrying, Recycling & Bulk Materials Handling Industries'

The HUB magazine is posted out to 6,000+ individually named recipients, and it is delivered to place of work, not their home address. This means that we get to end users and sites, and our 'pass-on' rate is currently at around 3 meaning that our estimated readership is 18,000 each quarter. Plus, our reader-ship don't have to pay any subscription to receive the Magazine.



September 17

BULKEX Exhibition Preview



Quarrying - Turnkey bespoke static crushing and screening plant. Wear parts and wear protection.

Recycling - Material handlers, shredders and associated processes.

Bulk Handling - Storage & handling, level measurement & control.

Editorial copy deadline 5th September 2017

Advert copy deadline 15th September 2017

November 17

Quarrying - Bitumen, asphalt production plant, burners and other equipment. Concrete technology.

Recycling - Mobile equipment for the recycling industry.

Bulk Handling - Turnkey bulk materials handling systems and associated products.

Editorial copy deadline 5th November 2017

Advert copy deadline 15th November 2017

January/February 18



AGG1 / World of Asphalt Exhibition Preview

Quarrying - Washing and screening technologies, equipment and plant including sand plant, cyclones, barrels, scrubbing, rinsing, separation, drying, classifying and fines treatment.

Recycling - Excavator Attachments, Screening Buckets, Crushing Buckets, safety couplers.

Bulk Handling - Power transmission and motion control featuring fluid power systems, hydraulics, pneumatics, electronics and control.

Editorial copy deadline 5th January 2018

Advert copy deadline 15th January 2018



March/April 18

INTERMAT Exhibition Preview



ScotPlant Exhibition Preview



Quarrying - Mobile and static crushing and screening equipment. Crusher spare and wear parts. Screens and screen media.

Recycling - Waste sorting and separating equipment and solutions for the waste industry.

Bulk Handling - Weighing technology, weighbridges, and on-board weighing.

Editorial copy deadline 5th March 2018

Advert copy deadline 15th March 2018

May/June 18



HILLHEAD Exhibition Preview

CARS / Metals Exhibition Preview

Quarrying - Dump trucks, excavators & wheeled loaders. Tyres and tyre chains, wheel washing equipment.

Recycling - Aggregate recycling.

Bulk Handling - Conveyors and elevators, feeders, chutes, valves, hoppers and silos.

Editorial copy deadline 5th May 2018

Advert copy deadline 15th May 2018

July/August 18



RWM Exhibition Preview

Quarrying - Track mounted conveyors, stockpiling conveyors, mobile radial stockpilers, tracked feeder stackers. Dust Suppression and Control.

Recycling - MRF's / Recycling Plants including feeders, trommels, shredders, picking stations, robotic separation, air-separation, ballistic separation, magnets, flip-flow screens, balers, and fines clean-up.

Bulk Handling - Gantry cranes, lifting and lashing, chains, storage solutions.

Editorial copy deadline 5th July 2018

Advert copy deadline 15th July 2018

To reserve space or ask a question! +44 (0)20 3637 0385 | sales@hub-4.com

ELITE

PRECAST CONCRETE

Quality precast concrete manufacturers... for a great range and even greater value

Elite Precast Concrete are one of the UK's leading precast concrete manufacturers combining the highest levels of customer service with always being the best value option.

Our focus is on driving down the cost base and then passing these savings onto our customers. This enables us to provide constant and predictable price structures which in turn underpin our ethos of developing customer relationships over the long term.

Every product we make is cast from the same premium quality, high strength (50N/mm²) concrete.

We were also the first and by far the largest manufacturer of interlocking blocks for various temporary works; fire breaks; retaining, blast and push walls and also, by offering three block types, you can be certain that we have the solution you are looking for.

For more information on Elite quality concrete products phone 01952 588 885 or browse www.eliteprecast.co.uk



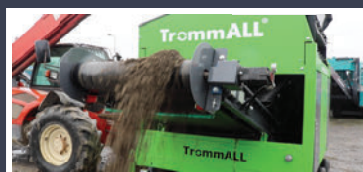
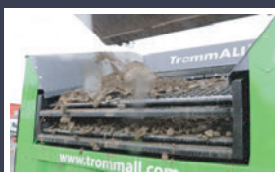
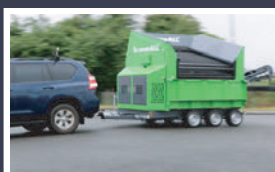
TrommALL®
OVERBUILT TO OUTPERFORM

POWERED BY
YANMAR

www.TrommALL.com
Sales@trommall.com
☎ +353 (0) 57 8679034
☎ +44 (0) 7584248923
f t y



www.TrommALL.com • Sales@trommall.com • f t YouTube



THIS IS WHAT YOU HAVE BEEN LOOKING FOR




TOMRA
SORTING SOLUTIONS

RECYCLING

+ 44 1509 23 22 39 // info-uk@tomrasorting.com


www.tomra.com/recycling





Valley Spring is a member of the Springmaster® Group

**SPECIALIST PRODUCER OF MEDIUM AND LARGE
DIAMETER COMPRESSION, EXPANSION
AND TORSION SPRINGS.**



Pottery Lane East, Chesterfield, Derbyshire S41 9BH
Tel: +44 (0)1246 451981 Fax: +44 (0)1246 454327
E-mail: sales@valleyspring.com www: http://www.valleyspring.com

PUNCTURES?

Our tyre sealants prevent up to 95% of all tread punctures.

No more costly downtime!



**AIR-SEAL®
PRODUCTS**

www.air-sealproducts.com
01823 674411
info@air-sealproducts.com

Advertisers Index

AGGPRO	35	OLIVIBRA	76
AIR SEAL	91	PROCESS COMPONENTS	80 & 86
AMBERBALE	63	QM&S	54
ARJES	40	RAPID	13
BAIONI	74	RIVERSIDE	72
BLUE	FRONT COVER	RUD	51 & 76
BULKEX	86	RWM	62
CDE	8	SCG SUPPLIES	48
CMS CEPCOR	24	SKF	13
CRJ/MATPRO	10	SMILEY MONROE	INSIDE FRONT COVER
CRS	68	SN ENGINEERING	82
DUO	78	SSAB	46
EDGE	51	STEELWELD	14
EGGERSMANN	40	STEINEXPO	33
ELITE	89	TANA	22
ERIEZ	80	TELESTACK	36
ITW AVERY	72	TEREX ECOTEC	70
KIVERCO	69	TEREX FINLAY	BACK COVER
KLEEMAN	30	TOMRA	90
KTR	78	TROMMALL	90
LIEBHERR	62	ULSTER SHREDDERS	70
LOADSCAN	32	UWT	15
MAGNAPOWER	77	VOLVO	58
MASTER MAGNETS	74	VALLEY SPRING	91
MDT ENGINEERING	50	WARWICK WARD	18
MOLSON	6		

Introducing the NEW Terex® Finlay J-1170 Jaw Crusher.



J-1170



The **NEW** Terex® Finlay J-1170 (direct drive) jaw crusher builds on the legacy of our original J-1170 model. The **NEW** model features an efficient direct drive arrangement and advanced electronic control system between the powerunit and crushing chamber to provide high capacity with large reduction ratios.

The machine incorporates the Terex® 1100mm X 700mm jaw crusher that can be configured with hydraulic assist for quarrying applications or hydraulic release for recycling applications. An innovative feature we have developed for the machine is the reversible unblock feature that maximizes machine uptime. All new build Terex® Finlay crushers are fitted as standard with our revolutionary T-Link Telematics system.



TEREX® | FINLAY



www.terexfinlay.com

Terex® Finlay, Drumquin Road, Omagh, Co. Tyrone, Northern Ireland. BT78 5PN T: +44 (0) 28 82 418 700 F: +44 (0) 28 82 244 294 E: sales@terexfinlay.com

All rights are reserved. Terex® is a registered trademark of Terex Corporation in the USA and many other countries. Copyright 2017 Terex GB Ltd.