

DOWNLOAD THE **FREE**
HUB APP TODAY



Issue 37

HUBTM4

Global News & Information
on the Bulk Materials Handling,
Recycling & Quarrying Industries

Check out the very latest industry news at www.hub-4.com

PREVIEW

bauma 2016

April 11-17 Munich

CELEBRATING 50 YEARS IN 2016 FROM THE OLD TO THE NEW

NEW MACHINE
LAUNCH AT
BAUMA 2016



POWERSCREEN
CELEBRATING 50 YEARS
OF POWER FOR

50

www.powerscreen.com

POWERSCREEN®
A TEREX
BRAND

Visit POWERSCREEN at bauma 2016 on Stand FM711

RULE THE GROUND



EXPERIENCE HYUNDAI AT BAUMA

Come and experience our newest excavators and wheeled loaders first-hand at BAUMA 2016, held April 11-17 in Munich. There's so much to discover at our booth; a merchandise shop, a high-tech photo booth and... a very special BAUMA offer! For more information, please find your nearest Hyundai dealer at www.hyundai.eu

BUILD A BETTER FUTURE

HHIE UK | Unit 15 Bilton Industrial Estate | Lovelace Road | RG128YT Berkshire | +44 (0) 1344 484 034 | info.uk@hyundai.eu

www.hyundai.eu

 **HYUNDAI** | CONSTRUCTION EQUIPMENT



Visit us!

Open-air gr.
FM.813A

THE SHOWCASE OF CONSTRUCTION
Bauma 2016
April 11-17, Munich

www.bauma.de

In this issue

COVER STORY	4
BAUMA PREVIEW	7
NEWS	25
QUARRYING	39
WHEELED LOADERS	55
DUMPTRUCKS	56
TYRE CHAINS	59
EXCAVATORS	60
WHEEL WASHING	64
RECYCLING	67
ATTACHMENTS	73
BULK HANDLING	79



Hub Digital Media Limited
27 OLD GLOUCESTER STREET, LONDON WC1N 3AX

Issue 37 - March 2016

Sales & Advertising Enquiries:
+44 (0) 20 3637 0385

Global Sales Manager
David Roberts
david@hub-4.com

Editor
John Edwards
john@hub-4.com

Advertising Accounts Manager
Sophie Morgan
sophie.morgan@hub-4.com

2016 is Exhibition Time

Welcome to our second edition of the HUB magazine in 2016. With the weather starting to improve all eyes are on the forthcoming exhibitions for the industry. bauma kicks off the ball in April as Munich opens the doors to the world's leading trade fair for construction machinery - 'The heartbeat of our industry'. So once again we expect attendance records to be broken - see our preview in this issue.

Shortly after bauma we have the Scotplant show which will be held at the Royal Highland Centre, Ingliston, Edinburgh. Many of the big names have confirmed they will be attending the biggest show of the year for Scotland's construction equipment industry.

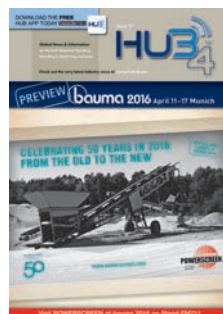
In the UK we have the biennial Hillhead quarry show held in June at Buxton, Derbyshire. This show has been a focal point for the quarry industry and has been a regular feature on the exhibition calendar since 1983. All the big players will once again be exhibiting with the show a sell out!

A one-day show in Manchester see's the cream of the waste industry come together to attend - Waste 16. This show is built by the waste industry for the waste industry and promises to be the biggest yet, attracting exhibitors from all over the UK and Europe.

In July the CARS exhibition which will be held at Donnington is Europe's premier event for auto recyclers and material processors. It is the only event of its kind, drawing over 1,200 attendees from 25 different countries. Alongside this show will be the Metals Recycling Event which is the only trade show dedicated to metals recycling. Whether you are a merchant, processor or involved in transportation, the metals recycling event brings the industry together under one roof creating new relationships and driving the industry forward.

September welcomes the opening of the RWM show which is Europe's premier event for resource efficiency and waste management solutions. It is the only event of its kind, asked for by the industry, covering all aspects of the waste hierarchy.

Finally, BULKEX16 follows in October which is the premier event aimed at professionals and organisations from across the bulk materials handling industry. BULKEX16 will be held once again at Harrogate International Centre on October 5 and 6.



Magazine Subscriptions - the HUB magazine is available free of charge within the UK, please send an email to admin@hub-4.com stating your name, title, company, full postal address and email address. We will then review your application. The HUB Magazine is also available in Europe, Ireland, the USA and Worldwide on a paid subscription basis at £115 (+ VAT per year where applicable) for six issues, please email admin@hub-4.com for more details or call +44 (0)20 3637 0385.



Powerscreen set to launch new electric screen at Bauma 2016

Powerscreen, one of the world's leading providers of mobile crushing and screening equipment, will host its global launch of the new electrically driven Warrior 1400XE mobile heavy duty screen at Bauma 2016. From 11th - 17th April 2016, Powerscreen will exhibit the mammoth Premiertrak 600 jaw crusher alongside the new screening model at the Terex booth FM711.

Commenting on the line-up, Colin Clements, Powerscreen Global Product Line Director said, "This is a very important year in Powerscreen's history. In 2016 we mark 50 years of power and success and what better way to start the celebrations than with a global machine launch at Bauma on the industry's largest stage. Our team of crushing and screening experts look forward to meeting new and existing customers at the show to share how our equipment and features can add real value to their businesses."

Product Manager for Powerscreen, Oliver Donnelly, explains some of the thinking behind the new model. "The electrically driven Warrior 1400XE shows our response to customer demand and our commitment to embracing a more environmentally aware approach to innovation. This latest development utilises a combination of highly efficient electrical components and clever design to deliver the lowest possible cost for every tonne of material processed through the machine. While we are excited about the low running costs, we are proud to have produced a machine where customers will also quickly see dramatic savings in the costs associated with maintenance and servicing. Versatility has definitely not been compromised."

Powerscreen® Warrior 1400XE Electrically Driven Screen

The Warrior 1400XE has been designed to meet the needs of customers for whom electricity is a preferred power source and opens up the possibility to run the machine indoors. It can be powered by electricity generated by other Powerscreen models eg. the Premiertrak 600. The Warrior 1400XE builds on the success of the standard Warrior 1400X model with its single shaft, high amplitude 3.6m x 1.25m (12' x 4.5') screenbox and the chassis riser option giving excellent stockpiling capacity. It also has several important service and maintenance features including the Powerscreen "Stay-Clean" system under the feeder and a jack-up screen system allowing easy access for screen media changes. Depending on feed material the output capacity for this machine is up to an impressive 500 tph (551 US tph.)



The main benefit of the Warrior 1400XE is the variety of power options available. It can be self-powered with its own 72kVA generator, or be connected to a mains electricity supply for even further reductions in cost of ownership. For customers who understand the advantages of a packaged solution, the Warrior 1400XE can also be powered from an electric drive crusher with a barely noticeable effect on the crusher fuel consumption. This has the added benefit of eliminating the engine maintenance on the Warrior. Similarly in regions of the world where we need to operate in high altitude or in high ambient temperatures, the Warrior 1400XE can be powered as part of a machine train from a single gen-set which can be oversized to handle any de-rating caused by the operating environment.

There are many other scenarios where this machine will be seen as the right solution. For example, the Warrior 1400XE is more suited to running indoors than a conventional diesel-hydraulic machine and the extremely low noise levels will also be advantageous in many circumstances.





Powerscreen® Premiertrak 600 Jaw Crusher

The ground-breaking Powerscreen® Premiertrak™ 600 is a high performance primary jaw crushing plant which is easy to set up, versatile and engineered for quarrying, demolition and mining applications that require high production capabilities. At the heart of the Premiertrak 600, is a 1200mm x 820mm (47" x 32") modern jaw chamber incorporating a robust construction with many user-friendly features, such as a fully hydraulic CSS range of 75mm - 200mm, (3" - 8") and a reversing system to clear blockages quickly for increased uptime. The aggressive stroke and high inertia flywheels ensure high production rates and excellent reduction ratios.

The machine can produce up to 600 tph (661 US tph) and has a proven track record of excellent performance by crushing some of the hardest rock in the world with ease in Finland, Sweden and Germany.

Underlining the ease of set-up Ed O'Donohue, an operator in Ireland said, "When the machine first arrived, we were hugely impressed with the modern design and robust construction. For a machine in that class range at more than 70 tonnes, we expected it to be quite complicated to set up and get operational, but in fact the opposite was true. The machine was crushing within minutes of being tracked off the transport truck!"

The diesel-hydraulic and diesel-electric variants of the Premiertrak 600 have been designed and constructed to deliver maximum production and performance with increased uptime and low running costs. The high capacity jaw is fed by a vibrating grizzly feeder with variable speed control and a large grizzly area to maximise removal of fine material

enabling maximum wear life of jaw plates within the crusher chamber. The bypass chute is also fitted with wear-resistant liners as standard, and incorporates an adjustable five-position deflector plate to divert material to either the product or side conveyors.

Powerscreen invites Bauma attendees to visit booth FM711 to receive first-hand information on Powerscreen® machines and to meet members of the Powerscreen sales and customer support teams and representatives from Powerscreen's Global Dealer Network.

For more information on Powerscreen® crushing or screening products or customer support please contact your local dealer. Details can be found at www.powerscreen.com.

Contact information

Dearbhaile Mulholland, Powerscreen Marketing Manager,
call +44 28 87 718 500 or email
Dearbhaile.mulholland@powerscreen.com

Network with Powerscreen:

Become a fan on Facebook by visiting
www.facebook.com/PowerscreenOfficial

Follow us on Twitter by visiting
www.twitter.com/Powerscreen

Check out our videos on YouTube by visiting
www.youtube.com/user/Powerscreen

Get Powerscreen® product information instantly with the Powerscreen App for your BlackBerry, Android or Apple Mobile Device.

About Terex

Terex Corporation is a lifting and material handling solutions company reporting in five business segments: Aerial Work Platforms, Construction, Cranes, Material Handling & Port Solutions and Materials Processing. Terex manufactures a broad range of equipment serving customers in various industries, including the construction, infrastructure, manufacturing, shipping, transportation, refining, energy, utility, quarrying and mining industries. Terex offers financial products and services to assist in the acquisition of Terex equipment through Terex Financial Services. Terex uses its website (www.terex.com) and Facebook page (www.facebook.com/TerexCorporation) to make information available to its investors and the market.



www.hub-4.com/directory/679



The world speaks bauma. Join the conversation!

Experience trends, innovations and enthusiasm up close at the industry's most important international exhibition.

This is where the world comes together, so you can't miss out! Prepare your business success and look forward to:

- ▶ 3,400 exhibitors
- ▶ More than half a million visitors
- ▶ 605,000 m² of space

Get your ticket now:
www.bauma.de/tickets/en



31st Edition of the World's Leading Trade Fair for Construction Machinery, Building Material Machines, Mining Machines, Construction Vehicles and Construction Equipment

www.bauma.de



THE HEARTBEAT OF OUR INDUSTRY
bauma 2016
April 11–17, Munich

THE HEARTBEAT OF OUR INDUSTRY

bauma 2016
April 11–17 Munich



Where should you be in April 2016? **At bauma in Munich!**

Following the March 2015 deadline for applications to exhibit at the next bauma, taking place from April 11 to 17, 2016, it was already clear that demand for exhibition space is again very high. The upcoming edition of the World's Leading Trade Fair for Construction Machinery, Building Material Machines, Mining Machines, Construction Vehicles and Construction Equipment will take up all the available space - a total of 605,000 square meters of space - at the Messe München exhibition center in Munich.

bauma 2016 - diverse and international

Again the event is set to be very diverse and international: More than 3,400 exhibitors from over 50 countries are expected to take part. Just how important bauma is to the international building and construction machinery sector is also reflected in the number of international country pavilions that are being organized. Nine countries in all are putting on dedicated presentations: Brazil, China, Czech Republic, France, Great Britain, Italy, Korea, Northern Ireland, and the US. The top ten countries of origin among the exhibitors are as follows (after Germany, as per current applications status): Italy, China, Turkey, the USA, UK, France, the Netherlands, Spain, Austria and Korea.

Klaus Dittrich, Chairman and CEO of Messe München, is very satisfied: "The response from the exhibitors and the high level of demand for space are truly amazing." But Dittrich is also very aware of just what problems this brings: "Of course we want to give as many companies as possible the chance to present at bauma. Yet because of this high level of demand, we will unfortunately not be able to meet all requests for space and participation."





bauma Innovation Award

At the upcoming bauma in 2016, the so called bauma Innovation Award will be presented for the eleventh time. The award is a joint initiative carried out under the auspices of the German Engineering Federation (VMDA), the German Construction Industry Association (HDB), the Central Association of the German Construction Industry (ZDB), the German Building Materials Association (BBS) and bauma.

The awards are presented for promising developments that are future-capable, cost-efficient and offer a high practical benefit that contribute towards energy and resource-efficiency and/or humanization of the workplace. In all categories, the innovations submitted must be relevant to the construction equipment, building material and mining equipment industry or to the construction industry and the building material industry. An international jury of representatives from research, industry and the trade press nominate three innovations in each category. The presentation of the awards to the winners takes place on April 10, 2016, as part of the opening ceremony to bauma in Munich.

bauma Open Innovation

Furthermore, in time for bauma 2016 Messe München is launching a new service for the sector: the "bauma Open Innovation" online platform. bauma participants and other professionals interested in the sector can use this platform to solve their innovation related challenges, by calling upon the expertise of Messe München's entire cross disciplinary network of contacts.

On this platform, companies can engage in applications or technology "scouting". For example, companies can seek out new industries or fields of application for their existing products and services, and/or find appropriate technological solutions to meet specific challenges they are facing.

The bauma Open Innovation Platform is not the first of its kind at Messe München. A similar concept has already been implemented for the trade fair ISPO. The benefits of such an interdisciplinary "Open Innovation" method are obvious: Via the platform project organizers have virtual access to the combined expertise of over two million visitors and more than 30,000 exhibitor contacts. If a company harnesses their





knowledge, wishes and requirements early on in its innovations development, then development times and costs can be lowered. In terms of application scouting in particular the interdisciplinarity of this cross-industry network can help to identify new fields of application for products and services.

bauma Charity Alliance

And there is more news... The construction and construction machinery industry has been one of the driving forces of the global economy for years. The new "bauma Charity Alliance" is intended to highlight the fact that the companies in this sector are actively engaged both in combating hunger and poverty and in promoting education and the environment in the Third World in addition to their day-to-day business. The launch will be at bauma 2016.

There is no doubt that the good fortune the industry has enjoyed in recent decades has been driven significantly by globalization. This being so, internationally orientated companies have become increasingly involved in developing and emerging countries. But many companies are interested not just in pure profit maximization and expansion but are actively involved worldwide in social projects of every description. Klaus Dittrich, Chairman and CEO of Messe München GmbH said: "Corporate societal and social commitment is no contradiction. On the contrary: long-term success requires both factors to go hand-in-hand. Many bauma exhibitors have long since taken this on board and are acting accordingly."

Inspired by the "Pilosio Building Peace Award", bauma has therefore set up the so-called bauma Charity Alliance to coincide with the forthcoming event. The intention is to create a strong network and presentation platform to draw attention to social commitment by companies within the construction machinery industry. The network intends to promote dialog between members on the implementation of social projects and to attract additional interested parties to become actively involved in the bauma Charity Alliance.

Applications are restricted to companies exhibiting at bauma 2016, who are carrying on projects in the fields of education, nutrition, health, social integration or the environment and which bring about a lasting improvement in the living conditions of people in need living in, or hailing from, crisis areas, emerging or developing countries. To date Atlas Copco, AUMUND Fördertechnik, MAN, Pilosio, Terex Latin America, Wirtgen, Volvo Construction Equipment, Zeppelin Baumaschinen and ZF Friedrichshafen have notified their projects to the bauma Charity Alliance.

bauma - THE place to be in April 2016

All these facts ensure that bauma 2016 will again be an unforgettable event. This show is without a doubt the most important trade fair worldwide for the construction machinery industry. The product ranges on show at bauma cover the full range applicable to the construction and mining industry. Visitors and customers can find the latest products and innovations, which are presented to the market the very first time. Moreover, the bauma atmosphere is unique: bauma is huge, it is overwhelming, enormously busy and international ... **it is simply the biggest show on earth and always a successful business.**

THE HEARTBEAT OF OUR INDUSTRY
bauma 2016
April 11-17 Munich

Increase your Marketplace Flexibility and Maximize Production



Minimise fine sand losses to the ponds thus maximising production of saleable product.

Wash Plants & Water Treatment, Crushing & Screening, Unit Cost Processing, Bulk Handling Systems, Spares & Service



Call us to discuss your specific Washing, Crushing and Screening, Aggregate Processing and Bulk Handling requirements.

DUO Equipment Limited, 4 Rye Hill Office Park, Birmingham Road, Allesley, Coventry, CV5 9AB, UK.

T +44 (0) 845 22 22 386 E enq.hub4.m@duopl.com W www.duopl.com



The Complete Quarry Solution

New and used static & mobile quarry plant, spares and on-site maintenance



CMB International Limited

LITTLE ALTON FARM, THE ALTONS, RAVENSTONE, LEICESTERSHIRE LE67 2AA UK T: +44 (0) 1530 563600

www.cmb.uk.com

CMS Cepercor will exhibit a range of replacement crusher spare parts at Bauma 2016

CMS Cepercor™ will again exhibit a range of replacement crusher spare parts and premium manganese crusher liners at the Bauma 2016 International Trade Fair held in Munich, Germany between the 11th-17th April 2016.

CMS Cepercor™ remain Europe's leading aftermarket manufacturer and supplier of compatible crusher parts, premium manganese crusher liners, re-manufactured crushers and crusher service to mining, quarrying, demolition and recycling industry worldwide.

Bauma 2016 is the International Trade Fair for construction machinery, building material machines, mining machines, construction vehicles and construction equipment, see www.bauma.de for further information.

The CMS Cepercor™ team look forward to meeting you in hall B2.326



www.hub-4.com/directory/1761

New Doosan Mid-Size Excavators & Loaders at Bauma



As always, the Doosan Construction Equipment stand at the Bauma Exhibition in 2016 will be a busy place and one of the highlights will be the first appearance at Bauma of the company's new Mid-Size '-5' Stage IV compliant excavators and wheel loaders.

Sharing the same DNA as the larger -5 models, the new Mid-Size models offer similar levels of productivity improvement, comfort enhancement and increased product versatility. At Bauma itself, Doosan has confirmed that it is showing the following Mid-Size machines:

DX140W-5 wheeled excavator

DX165W-5 wheeled excavator

DX190W-5 wheeled excavator

DL200-5 wheel loader

DL250-5 wheel loader

In addition, the following new models will be introduced in the second half of 2016:

DX225LC-5 crawler excavator

DX180LC-5 crawler excavator

DX160W-5 wheeled excavator

DL220-5 wheel loader

As well as meeting the latest Stage IV emission regulations, the -5 range goes much further and sets a new benchmark for excavator and wheel loader design globally and raises the performance standards already set by the previous '-3' Stage IIIB range. These changes are signified by a distinctive new machine styling scheme that is common to all new -5 machines.

As well as powerful Stage IV compliant diesel engines, new innovative and exclusive features have been introduced in the new Mid-Size -5 excavators and wheel loaders that reduce fuel consumption further compared to the -3 models. Already excelling in spaciousness and ergonomics, the new cabs on the Mid-Size models have also been further refined for outstanding operator comfort and ease of operation.

www.hub-4.com/directory/6960

Smiley Monroe all set to exhibit at Bauma 2016

Smiley Monroe will be launching a new mobile responsive website and showcasing a number of product innovations at bauma 2016, the world's leading trade fair for construction machinery.

Smiley Monroe's applications experts and experienced problem-solving engineers will be on hand all week with their German speaking colleagues to demonstrate the benefits of the company's latest offerings, including a new 3D demonstration video for Zip Clip™: the faster replacement belt system for the OEM Aftermarket; a new line of special conveyor belts, highly customised with hot moulded cleats and sidewalls; steel-backed wear liners and an all new neutral grey model of their energy-saving polymer King Roller™, designed specifically for the OEM market.



Bauma will also see the launch of Smiley Monroe's new MegaFlex™ screen media, produced from a highly flexible and resilient rubber membrane for removing dust and fines with minimal pegging and blinding - available in a range of apertures, sizes and fixings to suit most tensioned screen decks.



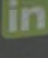
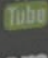
Tim Monroe, Smiley Monroe's Marketing Director said: "We've previously exhibited in Germany at Steinexpo and Recycling Aktiv, but this is our first time exhibiting independently at bauma and we're particularly excited about our location in the Open Air Area, surrounded by many of our worldclass customers, whose machines rely on Smiley Monroe conveyor belts and rubber parts systems for quality and forecasting."



**SMILEY
MONROE**
CONVEYOR BELT EXPERTS

**GIGANTEN
DER GURTE**



   
www.smileymonroe.com

Catch up with the Smiley Monroe team on Stand 1021/3 in the Open Air Area, close to the North East entrance, where visitors can expect a warm welcome and a cold drink.

Northern Ireland and India based Smiley Monroe is a friendly, value-driven business, with kaizen at its heart, producing customised conveyor belts and rubber parts for global materials processing equipment manufacturers in the crushing, screening, recycling, road construction and environmental sectors. With over 35 years under their belts, Smiley Monroe's reach is now global, with a new logistics Hub for faster loading of exports to more than 40 countries worldwide - from the West of Ireland to the West Indies, and now Asia.



www.hub-4.com/directory/5684



CONVEYOR BELT EXPERTS

VISIT US AT

BAUMA 2016
STAND 1021/3 OPEN AIR AREA

HILLHEAD 2016
STAND C27 OUTDOORS

GIANTS OF BELTING

Legend has it that the Giant's Causeway on Northern Ireland's Antrim coast was built a long, long time ago by a giant, as stepping stones across the sea.

In today's global supply chain, we're shipping more fully customized conveyor belts to more mobile crushing, screening & recycling OEMs than anyone else on the planet.

So take the next step and talk to us -
We're closer than you think.

T: +44 (0) 28 9267 3777

E: sales@smileymonroe.com



www.smileymonroe.com

Terex® Finlay introduces T-Link Telematic System

Terex|Finlay has introduced its T-Link remote monitoring and fleet management telematics system to its range of mobile crushers. All Terex|Finlay crushers manufactured and shipped from January 1st, 2016 are equipped and fitted as standard with the T-Link system complete a three data subscription.

About T-Link

T-Link enables owners remotely manage and stay connected to, keep track of their equipment, monitor work progress, manage logistics, access critical machine information, analyse and optimise machine performance and perform remote operator support.

T-Link combines Terex|Finlay machines' inbuilt CANbus control system with on-board sensors and electronics with satellite positioning and telematics software. Data collected via the system can be accessed securely over the internet via an online portal that has 24/7 365 days accessibility. Owners are issued with a login and password that gives them immediate accessibility to access their machine data via the portal from any internet-enabled computer or mobile device.

Key advantages of the Terex|Finlay T-Link system are:

Enhanced Machine Uptime

T-Link provides accurate diagnostics and working records in near real time of machine operational performance and assists in monitoring the health of equipment and schedule preventative maintenance. The information and reports that can be downloaded include:

- Engine work time
- Engine idle time

- Engine load levels
- Operation status
- Fuel consumption
- Cautions and alerts
- Working status maintenance replacement and notifications
- Cone liner wear updates
- Tonnage output (when aligned to a calibrated belt weigher)

Enhanced Security and Visibility

T-Link gives full visibility of the physical location of your machine in near real time and enables operators to define control parameters and measures of operational use of equipment. If there is any violation of these defined parameters the system connects immediately with authorized and nominated company representatives via email.

Geofences, or a virtual perimeter can be placed around the location where equipment is working. If the machine crosses the geo-fence the system triggers an alert notification. T-link also enables owners to place Time-Fence, time-based rules, of when machines should be operational.

If the machine is operated outside of defined work zones and time frames T-Link will not shut down the machine, but will trigger an alert notifying of any violations.

Enhanced Fleet Management and Performance

T-Link enables operators to accurately monitor and analyze plant fuel consumption (eg. fuel level and daily production costs) to enable operators to lower their operational energy costs.

The T-link system also provides access to service codes from a central location. This capability permits operators to implement performance enhancement

adjustments to their equipment or upskill operators to improve efficiency and productivity.

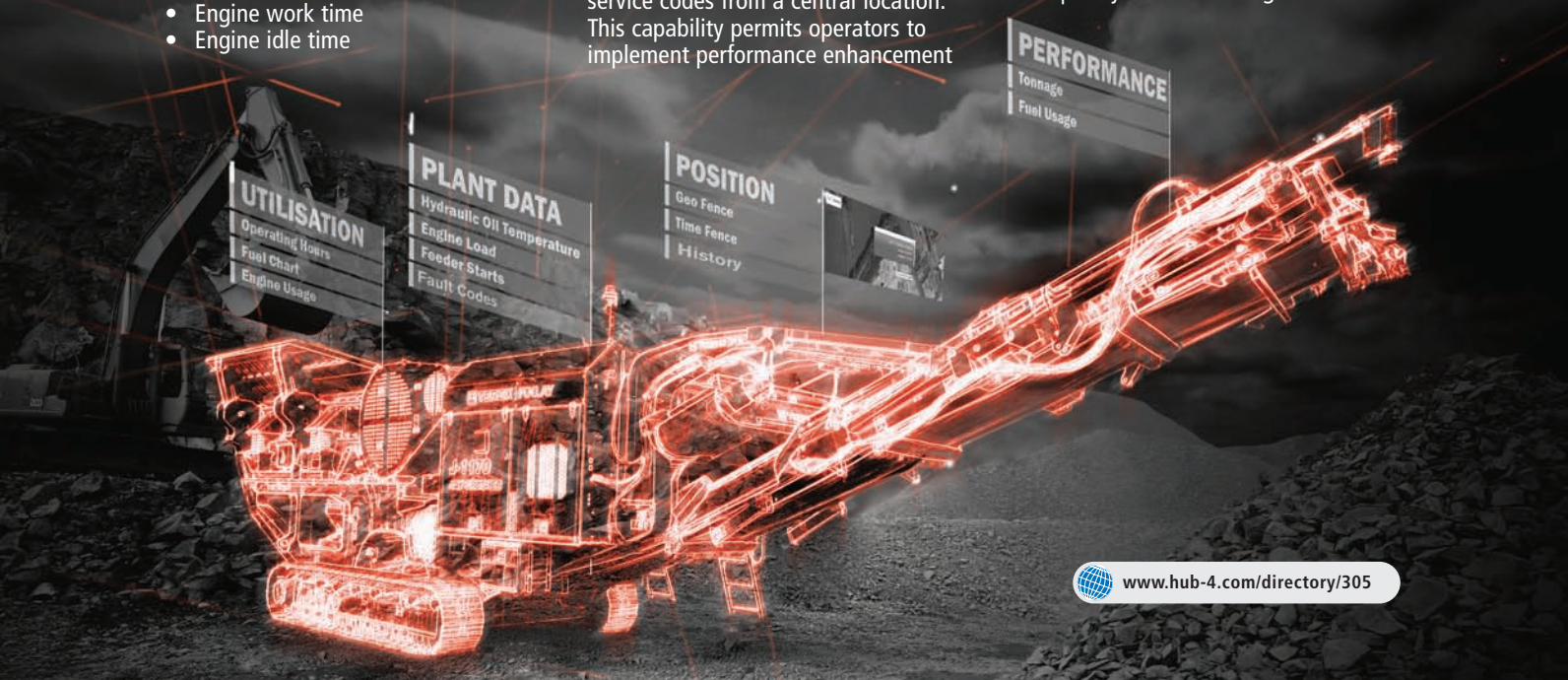
- Fuel economy reporting (cost per tonne if belt-weigh fitted)
- Idle / working time monitoring
- Engine load recording
- Fleet management reporting
- Utilisation reporting

How the T-Link Telematics system works?

- The system operates on dual-band networks that utilises both cellular and global positioning satellites (GPS) technologies to connect you with your machine in the field.
- The T-Link components and software on your machine collects machine data and transmits it to the satellite.
- The communication network transmits information to the T-Link data centre.
- The T-Link data centre stores harvested data for the life time of the equipment.
- Data can be accessed from the machine in near time via the internet from the T-Link data center on your computer, smart phone or tablet.

The Terex Finlay T-Link system enables owner operators to maximise their business efficiency and capacity by increasing plant utilisation, planning efficient routing and job allocation, timesheet reporting, accurately monitor equipment fuel burn, preventative and maintenance management, operator behaviour and reduce plant idling.

"T-Link takes the guesswork out of machine monitoring and performance optimisation" said Alan Witherow, Terex|Finlay Product Manager.



www.hub-4.com/directory/305



Be Part of Something **BIGGER**

"Be Part of Something Bigger": Liebherr at Bauma 2016

- The motto "Be Part of Something Bigger" invites visitors from all over the world to experience the trade fair at the Liebherr stand at Bauma 2016
- Stand 809-813 in the outdoor area exhibits over 60 construction machines, including numerous global premières
- Liebherr presents latest developments in drive and control technology in Hall A4, Stand 213

Munich (Germany), 19 January 2016 - At the 2016 Bauma trade fair from April 11 - 17, the Liebherr Group is showcasing many new and further developed products from every area of its extensive range of construction machines, mobile and crawler cranes, material handling technology, mining, as well as components, on a total display area of more than 14,000 m².

Liebherr is also presenting numerous global premières at Bauma 2016 with the over 60 outdoor exhibits (Stand 809-813). These include a new eight-axle mobile crane, a large crawler tractor with which Liebherr is represented for the first time in the 70 tonnes category, and a material handler for loads of up to 10 tonnes with a 20 m range. A special innovation is the high-strength fibre rope for hoisting applications, and the large mining machines are represented with a newly developed 200 tonne excavator. The 240 tonne large dumper truck, which was already showcased in 2013, will once again serve as an additional magnet at the Liebherr stand in front of the pavilion.

In Hall A4 at Stand 213, Liebherr presents the latest developments from the areas of mechanical, hydraulic and electric drive and control technology on an exhibition area of

280 m². This special stand for components also offers global premières - including the in-house developed energy storage system "Liduro" and the Liebherr SCRFILTER as an exhaust gas treatment system for stage V diesel engines.

Cranes

Liebherr has developed a new range of hydraulic fast-erecting cranes. The smallest self-erecting cranes bear the designation L1. With the new range Liebherr offers a functional crane which allows construction companies to operate efficiently. These hydraulic fast-erecting cranes combine power and compactness with the highest level of security and safety.

The Liebherr product line of mobile cranes exhibits three trade fair premières at Bauma 2016 with innovations which make crane applications particularly efficient. Two of the new cranes



were already displayed at the 2015 Customer Days in the Ehingen plant: The 5-axle 250 tonne mobile crane LTM 1250-5.1 and the crawler crane LR 1500 with a maximum load capacity of 500 tonnes. An 8-axle mobile crane with a very long telescopic boom will be a global première at Bauma 2016. High efficiency and simple setup on the construction site took top priority in the design.

At Bauma 2016 Liebherr presents an innovative crawler crane concept for the 100 tonnes category. The new LR 1100 will be available worldwide from summer 2016. Transport, assembly, load capacities, as well as user friendliness, are aimed at optimising the customer benefit.

Together with the Austrian rope manufacturer Teufelberger, Liebherr is developing a new type of high-strength fibre rope for hoisting operations. Liebherr is currently testing the rope at the test bench and in field tests with various cranes. In comparison to steel ropes, the newly developed rope is significantly lighter and is more durable. The load capacities can be increased thanks to the reduced weight of the rope, while the overall weight remains unchanged. The discarding state of the fibre rope is easy to identify.

Earthmoving and material handling

Liebherr presents the new large wheel loader generation XPower® at Bauma 2016. Liebherr-XPower is an integral and innovative machine concept which sets new standards in terms of fuel efficiency, performance, robustness and comfort. The operator of a Liebherr-XPower wheel loader is able to save up to 30 percent on fuel.

At Bauma 2016 Liebherr will showcase the PR 776 Litronic crawler tractor, which is designed for tough mining and quarry operations. With the PR 776, for the first time Liebherr is launching a crawler tractor in the 70 tonnes category on the market. It is the largest hydrostatically powered crawler tractor in the world.

Another innovation is the material handler LH 110 C High Rise Port Litronic. It has been designed especially for use in port handling and impresses in the handling of bulk and general cargo with its new, lighter equipment with load capacities of up to 10 t with a range of over 20 m. Liebherr is also showcasing another global première from its range of small material handlers.

Mining

At Bauma 2016, Liebherr will unveil its new entry into the 200 tonne excavator class: the R 9200, built to complement the broad Liebherr mining product range. The 12.5m³ bucket is the biggest in its class, and offers sustainable performance while delivering peak fuel burn efficiency, even in the most

challenging conditions. This world-class mining excavator is designed to match mining trucks with payloads of up to 140 tonnes.

Special deep foundation machines

Liebherr underlines its claim as a full-range supplier in special deep foundation machines with the début of the piling and drilling rig LRB 355, as well as the duty-cycle crawler crane HS 8130 HD, at a trade fair. Another exhibit at Bauma 2016 is the popular rotary drilling rig LB 36 with Kelly equipment. All aforementioned products have already successfully demonstrated their efficiency in construction site applications all over the world.

Concrete handling equipment

The Liebherr product line of concrete handling equipment is represented at Bauma 2016 with ten exhibits. As well as several truck mixers and concrete pumps, the exhibits also include the newly developed mobile mixing plant Mobilmix 2.5. With an output capacity of 110 m³/h and many new features, this plant is being unveiled to the public for the first time in Munich. Some new features have been added and improvements made to the truck mixers. The truck-mounted concrete pumps are presented at Bauma 2016 in the new Liebherr design.

Components

The components and systems on show at the Liebherr stand in Hall A4 include diesel and gas engines, injection systems, hydraulic cylinders, pumps and engines, large diameter bearings, as well as gearboxes and rope winches. Here Liebherr also presents innovative electronics and control technology exhibits and electric machines.

At Bauma 2016 Liebherr presents a solution for complying with the EU diesel engine emissions standards of the future stage V. The SCRFilter is an exhaust gas treatment system for diesel engines. It is already used in tunnelling machines and is certified for stage IV engines, as well as for use in Switzerland. The SCRFilter also conforms to the regulations planned for stage V diesel engines. The extremely compact system is part of the Liebherr engine building block and is characterised by long service intervals of over 4,500 hours.

At Bauma 2016 for the first time Liebherr presents the in-house developed energy storage system "Liduro", which is based on double-layer capacitors. It is powerful and can be used flexibly for electric drive systems and machines. The compact, liquid-cooled complete system comprises all of the individual systems and assemblies needed, thereby making integration in an application significantly easier.



Be Part
of Something
BIGGER

Visit us at Bauma 2016

Experience technology up close, exceptional innovations and impressive dimensions. "Be Part of Something Bigger" and join us to experience our unique presence at Bauma 2016.

April 11th to 17th 2016 - Open-air area, Stand 809-813

Liebherr Components in Hall A4, Stand 213

Find out more at www.liebherr-bauma.com

LIEBHERR

BAV Crushers exhibit at Bauma for the second time

Exhibiting at Bauma for the second time, the theme for BAV Crushers' stand is clear and simple; evolution, not revolution. The stand will feature example of attachments for the same weight range of carrier excavator, roughly based on 3 to 6 tonne operating weight, from each of the company's three, core products:



BAV Alligator jaw pulverisers, for ripping up of slabs, demolitions of walls, cutting of rebar and primary crushing.

BAV-CB crusher buckets, for reducing general, on site rubble - bricks, blocks, concrete and even rock - to a re-useable aggregate.

BAV-RS rotary screening buckets, for sorting material pre and post crushing and for cleaning topsoil.

Unlike some attachment producers, whose compact excavator offerings can seem a bit of an afterthought - second fiddle to the bigger, more prestigious and lucrative items - BAV Crushers has worked hard to ensure as much functionality as possible transfers down from the larger attachments in each range.

Testament to the firm's approach to smaller attachments, 2015 has been a hugely successful year for its smallest crusher bucket, the BAV-CB2, for machines in the 2.5 to 3.5 tonne class. The firm says "You know when you have a good product; it goes out of the door quickly and you never hear of any problems with it. A truly great product however, is one where every single customer goes out of their way to get in touch and offer positive feedback. This is what our engineers have achieved with the BAV-CB2".

 www.hub-4.com/directory/14500

MB Crusher: Demand the best, choose the original!

The most copied bucket crusher and no1 best seller is waiting for you at bauma from the 11th - 17th April 2016

2015 year ended with our participation in 68 fairs across the globe, 8 demo areas, 4000 metres of exhibition space and more than 2,000 new visitors accredited, MB now starts the new Year at bauma 2016.

Great news scheduled for this edition; without any doubt visitors will be tempted by commercial offers destined to leave their mark. "It will be hard to resist and not to purchase at the fair", promise the head of the company that, over the years, has accustomed his audience to incredible twists and incentives.

bauma preview.

BF90.3 and MB-S18 third generation

The best MB bucket crushers and screeners are exceeding themselves with a new more compact and more productive version. Check it out at the show!

MB-LS170 The range of screening buckets for backhoe loaders expands with a new unit!

New Range

Already considered the largest in the crushing industry world, MB range is still expanding!

MB Network

For the first time at the fair the official MB Crusher do Brasil delegation, the new South American branch.

Over 11 sq. metres of dedicated exhibition area. Two locations: Promotional point vA6-B6 and Info point Hall C4 - stand 146. Demo area **FN 832/3**.

MB power and tenacity in a live show, unabated in an area of over 600 sq.metres.

Do not get distracted by imitations, make the best use of your investment.



 www.hub-4.com/directory/7833

HYUNDAI completes new **Stage IV** product range at **Bauma 2016**

Bauma 2016, Munich: April 11-17 2016 - Open-air ground FM.813A

Hyundai Heavy Industries Europe (HHIE) will present an extensive range of equipment for both the construction and forklift world. The construction equipment range comprises the construction, utility, forestry, recycling & waste handling and mining & quarrying industries at Bauma 2016. Many of the machines will be making their world premiere at the show. The forklift range focuses on the logistics & warehousing industry, agriculture, construction, load & carry and ports applications - including some world premieres as well.

The line-up includes the release of the newest models of the Stage IV range compliant excavators wheel loaders and forklifts.

Hyundai is showing a grand total of 24 construction equipment machines and 9 forklift models on the company's 3,447 square metre stand located in the open air area FM.813A. The impressive machine list reads as follows:

For the construction equipment division: excavators & wheel loaders

1. R16-9, mini-excavator, utility
2. R17Z-9A, mini-excavator, utility
3. R25Z-9AK, mini-excavator, utility
4. R27Z-9, mini-excavator, utility
5. R35Z-9, mini-excavator, utility
6. R55-9A, mini-excavator, utility
7. R55W-9A, mini-excavator, utility
8. R60CR-9A, mini-excavator, utility
9. R80CR-9A, mini-excavator, utility

Stage IV machines include:

10. HX145 LCR, crawled excavator, construction (world premiere)
11. HX220 L, crawled excavator, recycling and waste handling
12. HX235 LCR, crawled excavator, forestry (world premiere)
13. HX260 NL, crawled excavator, construction (world premiere)
14. HX300 NL, crawled excavator, construction (world premiere)
15. HX330 NL, crawled excavator, recycling and waste handling (world premiere)
16. HX380 L, crawled excavator, quarry and mining
17. HX520 L, crawled excavator, quarry and mining
18. HW140, wheeled excavator, construction (world premiere)
19. HW210, wheeled excavator, recycling and waste handling (world premiere)
20. HL940 TM, wheel loader tool master, construction (world premiere)
21. HL955 TM, wheel loader tool master, forestry (world premiere)
22. HL960, wheel loader, recycling and waste handling
23. HL970, wheel loader, construction (world premiere)
24. HL980, wheel loader, quarry and mining (world premiere)



For the forklift division:

1. 18BT-9, battery forklift, logistics/warehouse
2. 35BH-9, battery forklift, agriculture/construction
3. 25D-9E, diesel forklift, general/rental market (world premiere)
4. 30D-9, diesel forklift, general/rental market (world premiere)
5. 35DA-9, diesel forklift, load & carry (world premiere)

Stage IV machines include:

6. 45D-9, diesel forklift, construction (world premiere)
7. 80D-9, diesel forklift, construction
8. 160D-9, heavy diesel forklift, general (world premiere)
9. 250D-9, heavy diesel forklift, port

The most significant change in this continued programme is the roll-out of Stage IV compliant diesel engines, with reduced exhaust emissions and improved fuel economy. Besides the engine change there are numerous other updates ranging from the cabin features including dashboard and instrument cluster to the hydraulic control and the exterior design.



Hyundai Booth at Bauma 2016

Visitors are welcome at the outdoor Hyundai pavilion FM.813A. Staff members from Hyundai Europe, Hyundai Headquarters, product specialists and the German Hyundai dealers look forward to welcoming visitors with an interest in Hyundai's products: an extensive line-up of new crawled and wheeled excavators, wheel loaders and forklifts. Discover our latest range and take place in a selection of machines to have a very close look at the renewed cabin interior and the latest new features.

There is something interesting to see for every visitor. Highlights include the new machine series, a merchandising & spare parts shop. Have your picture taken at our state-of-the-art photo booth, watch the visual entertainment and enjoy some refreshments and snacks in our operator's café. Hyundai customers are welcome in the hospitality areas.

About Bauma 2016

Commenting on the importance of Bauma, J.C. Jung, CEO of HHIE said, "Market conditions continue to be harsh in our industry. Our business slogan for this year is 'Change Together', which means we implement changes and innovations. That is why we are proud to present our latest new generation machines at Bauma to our customers and to our dealers."

Review 2015 and forecast 2016 Hyundai Heavy Industries Europe

2015 has been the most successful year ever for Hyundai Heavy Industries Europe. Sales numbers and turn-over reached an all-time high with more than 5,000 units sold and over 250 million in turn-over. Despite the unstable economic situation and the unfavourable exchange rate for the Euro, Hyundai dealers managed an excellent performance in key markets including the UK and France.

Hyundai also introduced a great deal of new models in both construction equipment and forklifts. These new models have better fuel efficiency (lower fuel consumption), enhanced operators' comfort and smarter machine controllability. The renewal of the entire product line-up will continue for the coming year; so the year 2016 is looking promising.

However some concerns remain with respect to Hyundai Heavy Industries as a global company. Orders for new ships and power plants are diminishing due to the economic situation in South America and Asia. The CEO of Hyundai Heavy Industries in South Korea, Mr O.G. Kwon has communicated his aspirations for 2016:

The business slogan for this year is "Change Together" and sets out the following main objectives:

"HHI set the full-year sales target at W21.6396 trillion and the new order target at \$19.5 billion. These may seem lofty, but nothing would be impossible if we put in our best efforts."

"We have different business lines, thereby a different set of competitors, but everything had been managed under a uniform approach. Each of our business divisions needs to foster its own competitiveness, and this starts with total responsibility management at division level."

"It is important to attain technological prowess. Without world-class technologies it is difficult to build a sustainable business. Although it may take some time; new thinking and a new spirit will result in path-breaking technology."

Hyundai's success in Europe will be evident at the forthcoming Bauma 2016 exhibition. The Hyundai stand will occupy an impressive 3,447 sqm and will play host to a number of machines - many of which will be making their world premiere at the event.

Mister J.C. Jung, CEO of HHIE adds, "Market conditions continue to be harsh in our industry. Our business slogan for this year is 'Change Together', which means we implement changes and innovations. That is why we are proud to present our latest new generation machines at Bauma to our customers and to our dealers."

Mr J.C. Jung added "In addition, we're very happy to begin the construction work of our 30 million investment project for our new headquarters in Tessenderlo, Belgium. Our solid investment in this region and to grow our facility will enable Hyundai to increase our success in Europe. The new facility is an excellent step forward for our European division. Our commitment to growth proves that HHIE is a dynamic and forward thinking company."

Visitors can visit Hyundai Heavy Industries at Bauma in the open air area FM.813A





EFFECTIVE & ENVIRONMENTALLY FRIENDLY

Wheelwash has the largest range of high performance wheel cleaning equipment available in the UK. Our high quality, energy efficient equipment prevents site vehicles tracking out dirt and debris onto public roads in a range of diverse industries world-wide. We have products available for sale and hire to suit any site conditions and budget.



Wheelwash Limited
Pym's Lane, Crewe,
Cheshire
CW1 3PJ

01270 214886

sales@wheelwash.com
wheelwash.com



WHEELWASH LIMITED



WHEELWASH LIMITED



@WHEELWASHHQ



WHEELWASH CREWE



Christine Ames, Managing Director and David Waine, Global Business Development Manager

A driving force in wear parts for earthmoving, mining, quarrying and recycling sectors looks to expand BladeMaster in both domestic and export markets

Con Mech Engineers has over 65 years of success in ground engagement tool production. Part of the Con Mech Group of companies, Con Mech designs and manufactures its own range of replacement edges under its unique brand, BLADEMASTER.

The heat treated boron Blademaster product range consists of over 14000 integrated wear parts that are available worldwide. Everything in the range is available in standard, heavy-duty and very heavy-duty versions to match the demands of the working environment. This enables operators of earth moving equipment to select the right ground engaging tool for specific applications to maximise wear life and improve the productivity of their machines.

Key factors in Blademaster's success are the in house heat treatment facilities and expertise in steel chemistry. This enables the company to reliably achieve the hardness and abrasion resistance required for optimum performance in different site conditions. Their flexible and responsive approach means that Con Mech Engineers' can deliver a tailored product to match client's exact specifications be that for OEM new build or aftermarket applications.

We spoke at length with Christine Ames, Managing Director and David Waine, Global Business Development Manager. David started by explaining the manufacturing process "We work with reputable Western European steel mills to develop an alloy steel chemistry which is tightly controlled during the production process. We drill and cut the material whilst it is still "soft" before heat treating to achieve the desired hardness. This gives us a distinct advantage over our competitors that use pre-hardened wear plate which is subsequently processed. It is a documented fact that induced heat from gas cutting the wear plate will result in a reduced hardness close to the cutting edge. This "soft zone" extends from the cutting edge a short distance in to the plate and can reduce the service life of the component. However as Blademaster products are heat treated after processing this problem does not occur and the customer benefits from a fully hardened structure throughout the full thickness of the product. With our new Blademaster Extreme range we can also offer our clients a fully bespoke product. For example we can supply whatever thickness is required for a particular application, providing them a part with more available wear material."

Talking with Christine, she was passionate about the new Extreme product range "The range includes the Extreme Heavy-Duty, Extreme Very Heavy-Duty, Extreme Sub-Zero, and



the Extreme Extra-Tough product lines. The sub-zero range is designed to operate in temperatures down to -50 degrees. The Extreme Tough product is designed for thicker wear edges above 50mm and exhibits higher strength and crack resistance to withstand high stress.

We understand that choosing the right ground engaging tools can make a big difference to an operation's productivity and profitability. That's why we've developed a wide array of integrated GET systems and our specialists are keen to work closely with customers help them make an informed choice of tools that are best for the application and site conditions. Also our bespoke service enables our customers to get the durability and wear life they require which can make a real difference to their productivity".

This professional and totally in-house wear parts production process means that the end product is very well respected within the industry and is a true alternative to better known wear plate solutions. For more information please visit www.conmecheng.com or call us on +44 (0)1207 230621, or Visit us at Bauma, Hall 5, stand 227/1



www.hub-4.com/directory/16958

Terex Environmental Equipment to showcase its global product offering at Bauma 2016



TEREX® | **Ecotec**
Environmental Equipment

Terex Environmental Equipment (TEE) has made significant developments over the past years with strategic business acquisitions and an aggressive new product development programme. The opportunity to exhibit at Bauma 2016 gives TEE the platform to display its truly global product offering to a truly global audience. A comprehensive range of fixed and swinging hammer high speed grinders, whole tree biomass chippers, slow speed shredders, medium speed shredder, trommel screens, waste recycling screens, windrow turner, material handlers and custom static solutions ensures TEE has the right equipment for every application.

TEE Business Line director, Tony Devlin, commented "Bauma is renowned for being the largest construction show in the world and TEE is delighted to be able to meet with customers from all over the world to discuss business opportunities. TEE's vast product and application knowledge allows us to react quickly to both changing Government legislation and global recycling mind sets, placing TEE at the forefront of this rapidly growing business segment."

Show attendees will have the chance to see first-hand the Terex® TDS V20 medium speed shredder. This truly unique machine, within the mobile shredder segment, is the result of a partnership with the German shredder manufacturer Vecoplan. The TDS V20 shredder, with its medium speed shafts, end product sizing screens and intelligent contamination protection system demonstrates to customers TEE's drive and commitment to shape the mobile recycling market for years to come.



www.hub-4.com/directory/17072

THE PORTAFILL 3000 TRACKED SCREENER NORTHERN IRISH ENGINEERING AT IT'S FINEST

10ft x 4ft Screenbox / Available with full washing system / Deutz Power / Transports in a standard shipping container

FROM
£68,000
+ VAT

Sole UK Distributor For:
PORTAFILL

Riverside Machinery
Email: sales@riverside-machinery.com
Web: www.riverside-machinery.com

Main: +44 (0) 800 689 9024
Mob: +44 (0) 7766 405688 - John (Southern UK)
Mob: +44 (0) 7500 048985 - Ciaran (Northern UK)

**RIVERSIDE
MACHINERY**



EDGE Innovate Slayer XL UK Demo Tour

The EDGE Slayer XL, launched in 2013 has made considerable inroads into the UK market with its robust, durable and versatile design. The Slayer XL combines high performance with low operating costs and can be seen processing domestic household waste, green waste, RDF and tyres to name a few applications throughout the UK. To build on this success, EDGE has decided to take to the road to show just what our Slayer XL is capable of. Starting in Southern England we plan to travel the UK making stops at recycling yards across the country to showcase the Slayer XL's potential. This will give companies considering using our shredder a chance to "try before they buy."

Our slow speed, high torque, twin-shaft shredder is capable of handling a vast array of materials including; all types of wood, construction and demolition waste, green waste, domestic and household waste, commercial and industrial waste, white household goods, paper and cardboard, mattresses and all plastics.

Whether you need to deploy it as a primary or secondary shredder, the Slayer XL is more than capable with its robust design and superior resistance to difficult to shred materials. Indeed, the 350hp slow speed shredder with an average fuel consumption of just 7-8 gallons per hour can be supplied with up to 12 different chamber configurations; making the machine suitable for a wide range of applications. With ever changing legislation, stringent requirements and varying commodity prices; adaptability is key to a recycling industry's success. Whether it is processing construction or demolition waste, organic waste or domestic household waste the EDGE Slayer XL offers that all-round capability and versatility. The entire range of EDGE shredders can be customised to provide the right tonnage at the desired piece size.



Let the EDGE team demonstrate in your surroundings how the Slayer XL can optimise your production whilst improving your operation's efficiency and ultimately maximising your profits. Book your demo date quickly as only limited dates are available! If you have any questions or to enquire about hosting the EDGE Slayer XL in your yard or business contact info@edgeinnovate.com.

As with all offers, Terms and Conditions apply.



TESAB

Engineered for Power. Built to Last.

Phone: +44(0)2882 252781

Email: sales@tesab.co.uk

Web: www.tesab.com

Tesab Announce New UK Partnership!

Crushers/Screens/Conveyors
Hire/Lease/Buy Options Available
National Sales & Service Support

BE BANNER EQUIPMENT

Contact Banner Equipment:

Email Enquiries: sales@bannerequipment.co.uk

Keith Humphreys: 01325 377593 / 07793617382

10580 Crushing Primary Rock



8042TSL Stockpiling Basalt



Tesab Engineering Unit 9 Gortrush Industrial Estate, Omagh, Co Tyrone, Northern Ireland, BT78 5EJ



CLEARER SOLUTION TO WASHING

FOR OVER 55 YEARS

Bruce Engineering Services (NI) Ltd.
33 Lindsaville Road
Cookstown, Co. Tyrone BT80 8UH

tel: +44 (0) 28 8676 3684
email: sales@bruce-eng.co.uk
web: www.bruce-eng.co.uk
www.hardoxireland.com

UK Distributor
SCG Supplies Ltd

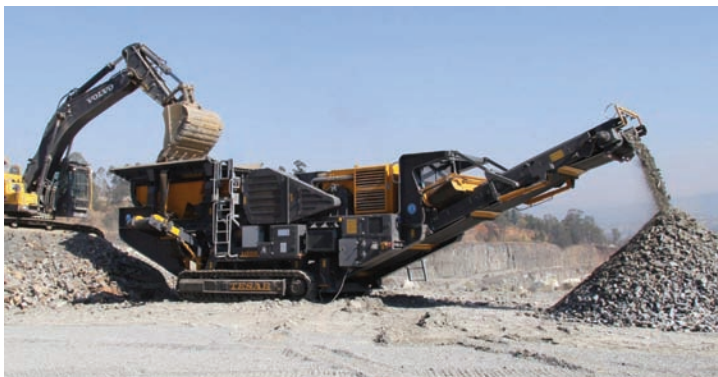
Paul Thorne

mobile: 07711 224181
tel: 01698 828683
email: sales@scgsupplies.co.uk

BRUCE

MATERIALS PROCESSING SOLUTIONS

> FEEDING/SCREENING/WASHING/RECYCLING/ENGINEERING/WEAR PARTS



Tesab appoint Banner Contracts as new Tesab-Trackstack dealer



Banner Contracts (Halnaby) Ltd have recently been appointed as new Tesab / Trackstack dealers, covering a geographical area from the Scottish Borders down to Aberystwyth / Kings Lynn. Banner Contracts is a family run business based in the North East of England with over 35 years' experience in the construction and quarrying industries.

Banner Contracts have seen strong growth in recent years as they have increased activities in their core areas and looked for new business opportunities within the industry. Their recent inclusion - for the 2nd consecutive year - in the London Stock Exchange's '1000 Companies to Inspire Britain' is testament to their success.

Andrew Banner, Director of Banner Contracts (Halnaby) Ltd, said; "Our new partnership with Tesab represents an exciting opportunity for both parties. Tesab have an excellent and well-deserved reputation within the Quarrying industry. They are a household name which we are proud to be associated with.

"We have been highly impressed with the entire Tesab / Trackstack range of Crushers, Screens and Stockpilers - They are clearly built to last! At a time when most other manufacturers seem to be attempting to save costs by thinning down and reducing the weight of their Crushers (the problems of which we have experienced first-hand in the past), it makes a refreshing change to see such well-engineered machines."

Banner Contracts have over a dozen service engineers operating out of their new purpose built, state of the art workshop facility. Andrew Banner continues;

"The service and back-up we will be able to offer our customers will be second to none. We can also supply the entire range of Tesab spare parts at highly competitive prices. We are only too aware of how costly down-time can be. When breakdowns happen, response time is critical. Our ability to respond quickly will be invaluable to our customers."

In addition to new plant sales, Banner Contracts will also be taking the Tesab / Trackstack Range into their hire fleet with Plant also available on a 'Hire to Buy' basis.

If you wish to contact Banner Contracts (Halnaby) Ltd regarding what they can offer you from the Tesab / Trackstack Range contact Andrew Banner, Jo Banner, Mike Banner or Keith Humphreys on 01325 377593.



www.hub-4.com/directory/819

Electromagnet Sales boosted by Indonesian Coal Industry



A long standing Master Magnets customer from Indonesia recently expanded their coal processing operations, a project that would require several new Electromagnets for the purification of their valuable product stream.

The company has grown rapidly since its early operations of the 1970s and now operates the largest single-site coal mine in the southern hemisphere.



It was back in 2005 when Master Magnets supplied the first Electromagnets to the customer, with an order for four 1450CW45 models in February, then a further four of the same units in May.

Over the years that have followed, the business partnership between the two companies has grown stronger, with the most recent order for five more 1450CW45 units taking the total number of Electromagnets supplied by Master Magnets to over 20.

Procurement Manager, Lisa writes: "Magnetic separation is one of the key processes carried out at our site. As we continue to strive towards producing the cleanest possible end product, Master Magnets have been great to work with, supplying equipment that is only ever of the highest quality."



www.hub-4.com/directory/541



SANDVIK GENUINE SPARES AND WEARS OPTIMISE, DON'T COMPROMISE

We understand your business and know you want to get the most out of your equipment. Through the use of Sandvik genuine spare and wear parts you can be assured of optimising the performance and maximising the productivity of your equipment. Not only do we have great stock availability but also reduced pricing on all Sandvik and OEM manufactured parts, such as Fintec, Extec, Svedala and Allis-Chalmers. Combined with our high level of customer support, you can rely on our extensive knowledge and experience to help keep your uptime to an absolute maximum.

Find out more:

UK: +44 (0) 1283 818400

info.smcuk@sandvik.com

CONSTRUCTION.SANDVIK.COM



Hill Engineering show the new Hill TEFRA Tilt Hitch at Scotplant 2016

Since its launch in 1998 Scotplant has been promoted as 'the exhibition where deals are done' and the 2016 event is on track to successfully showcase quality equipment to the right buyers once again. Hill Engineering, a



leading attachment manufacturer based in Newry Northern Ireland, has signed on the dotted line to exhibit and will be at the show with its new TEFRA Tilt Hitch, the award winning TEFRA Coupler and its Hill Titan Buckets.

The Hill TEFRA Tilt hitch was born from the innovation of the TEFRA originally brought to market in 2011. This tilt system allows operators greater flexibility in the way they use their machines and turns each and every attachment into one that can be used at up to 180 degrees. Hill engineering have used the award winning TEFRA system as the core of the product and introduced the hugely reliable tilt motor from HKS of Germany to achieve the 180-degree tilt function.

Oliver Phelan, Hill Engineering's sales & marketing manager said, "We see this market growing significantly in the coming months and years as operators' demand more from their machines potentially enter into new markets." The quality associated with the Hill and TEFRA brands, coupled with the unrivalled back up services for our clients, means the TEFRA tilt should be an essential tool in any operators' kit bag."

About the TEFRA Tilt Hitch.

The award winning TEFRA coupler and the HKS Extra Tilt Power Actuator have been united to provide users with two market leading technologies that, according to Hill Engineering, will transform the productivity of the users excavator. With a tilt angle of 180 degrees on all models, this ground breaking product will enable users to increase the versatility of their attachments in multiple applications.

Robust & Simple Design - is at the Heart of the TEFRA Tilt.

Hill Engineering say that the simple and robust design of the TEFRA Tilt sets this product apart from other suppliers. The TEFRA comes with just three moving parts and has been proven to be the most reliable quick coupler on the market today. Additional to this, the HKS XtraTilt Power Actuator is self-lubricating and essentially maintenance free, so that users are



able to concentrate on the important tasks. There can be no damage to tilt cylinders and failure of their connecting parts, such as fastening bolts and bushes, because the Power Actuator has none of these.

Key Features of the TEFRA Tilt Hitch.

1. Award winning TEFRA coupler
2. Simple & robust design
3. Tilt angle of 180 degrees
4. Single cylinder operation, removing complexity
5. HKS Extra Tilt - essentially maintenance and wear free
6. Exceeds current and expected global safety standards
7. Available for excavators 3T-20T

The Hill Engineering TEFRA Quick Coupler.

The award winning fully automatic coupler TEFRA will also be on display at Scotplant. The TEFRA has transformed health and safety on construction sites around the world - and has been significant in Hill's financial growth and increase in market share. TEFRA has proved itself to be the safest coupler on the market today - with only three moving parts - it has proven to reduce downtime extensively and make customers more productive in their operations.

The safety systems in the TEFRA eliminate one of the most dangerous aspects of handling attachments, which is the risk of attachments coming away completely. Hill Engineering solved this by using a positive locking system rather than a gravity locking system, making the crucial safety feature 'active' and not 'passive' in the way it works.

Completely manufactured in the UK, the TEFRA components are cast, which means its lower in weight and higher in strength.

You'll find Hill Engineering on Stand number 8 Avenue B at Scotplant 2016 on 22nd & 23rd April at the Royal Highland Centre, Ingliston, Edinburgh.



www.hub-4.com/directory/1890



**Strong Reliable Machines
Strong Reliable Support**

Q.

What does the lowest cost per tonne in the market look like?

A.



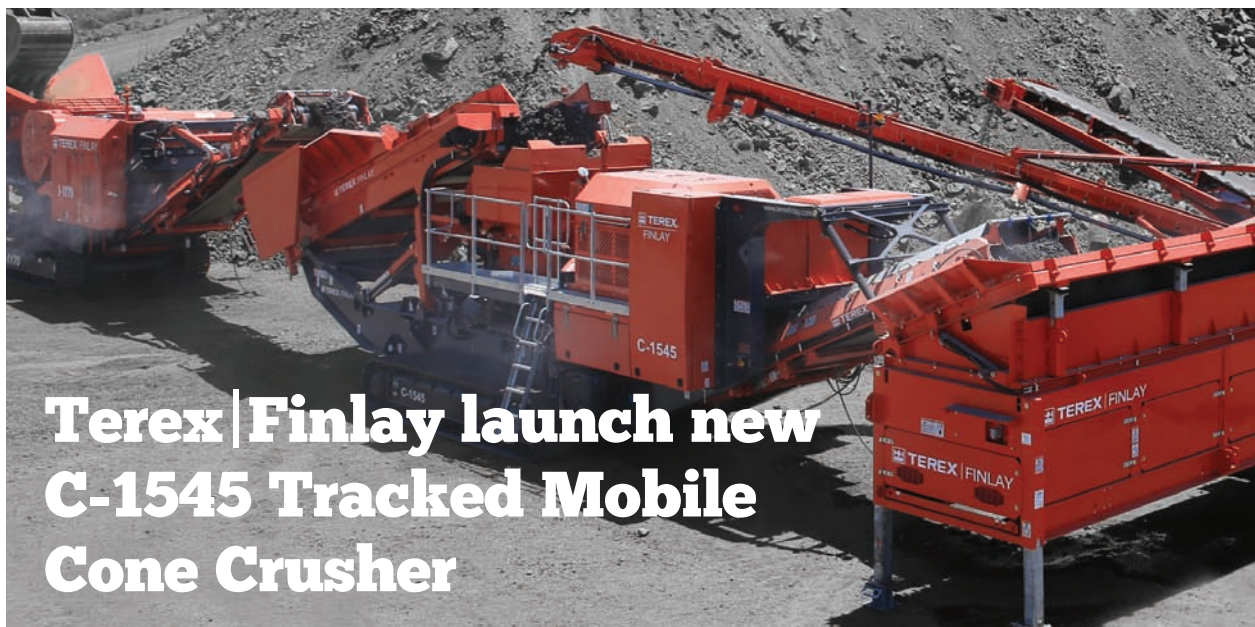
The evolutionary E-Series from Bell Equipment. The B25E and B30E build on the class leading D-Series range and offer the very lowest cost per tonne.

Talk to us about our advanced E-Series – setting new benchmarks in truck management.

- **Class** leading fuel economy
- **AD** heritage spanning over 60 years
- **4 Tier** with no DPF required
- **Load** weighing as standard

☎ 0800 915 7700

www.bellequipment.co.uk



Terex|Finlay launch new C-1545 Tracked Mobile Cone Crusher

The NEW C-1545 cone crusher is the latest addition to the Terex|Finlay range of tracked mobile cone crushers. The mid-range Terex® Finlay C-1545 offers operators a high capacity and aggressive cone crusher for the surface ore mining and aggregate industries.

This efficient and highly productive machine incorporates the NEW Terex® TC1150 cone crusher with direct variable speed clutch drive, automatic tramp relief and 'on-the-fly' hydraulic adjustable closed side setting (CSS) adjustment.

The large hopper/feeder has an automated metal detection and a purge system to protect the cone and reduce downtime by removing metal contaminants via the purge chute.

The large hopper/feeder has an automatic metal detection and purge system to protect the cone and reduce downtime by removing metal contaminants from feed belt at the touch of a button.

Additional benefits include, rapid set up time, ease of maintenance, high reduction ratio, advanced electronic control system, high output capacity and gives excellent product cubicity.

Key Features:

- NEW Terex TC1150 cone crusher provides high reduction and productivity ratios and gives excellent product cubicity.
- Fully Hydraulic CSS adjustment with electronic monitoring system ensures ease of operation.
- Fuel efficient direct drive transmission through wet clutch.
- Hydraulic Tramp Relief System with automatic reset protects the chamber and minimizes downtime.
- Metal detection system on feed belt with 'auto-stop' protects the cone from tramp metal and the purge system removes contaminants from the machine.

For further details on the Terex Finlay product portfolio and services please visit our website www.terexfinlay.com



www.hub-4.com/directory/305

New paint shop for Hewitt Robins

Measham based bulk handling equipment specialist - Hewitt Robins International has recently expanded their operation with the addition of a new on-site paint shop.

The new 110m² facility which incorporates standard two layer and multi-layer paint systems will guarantee a better paint finish and improve machine quality in a controlled environment.

With 5-6 machines currently going through the shop each month this new facility has underpinned the production at their Measham headquarters.



www.hub-4.com/directory/1901

Showcasing the latest models at Scotplant

Sandvik Construction UK will be taking the opportunity of this year's Scotplant to highlight a selection of best-selling models from our mobile crushing and screening range. At the show, which is held in Edinburgh from the 22nd - 23rd April 2016, we will look forward to welcoming visitors to our stand at what has become Scotland's leading construction equipment exhibition.

During Scotplant 2016 we will be exhibiting examples from our mobile crushing and screening range which has been developed with customers' requirements in mind. This ensures Sandvik produces the right equipment, for the right application, with features that ensure maximum levels of productivity, with the lowest levels of cost and environmental impact. In order to highlight the flexibility and productivity of the range we will be displaying some of the best-selling models. **These consist of:**

- QH331 Hydrocone crusher
- QJ341 Jaw Crusher
- QJ241 Jaw Crusher
- QE341 Scalper

One of the products to be highlighted at this year's Scotplant is the QH331 Cone Crusher. Featuring the renowned CH430 Hydrocone Crusher from Sandvik, this model possesses a direct drive system in order to increase product performance. This is a more efficient and robust, featuring a variable crusher speed to manipulate product gradation. Some of the QH331's key features include:

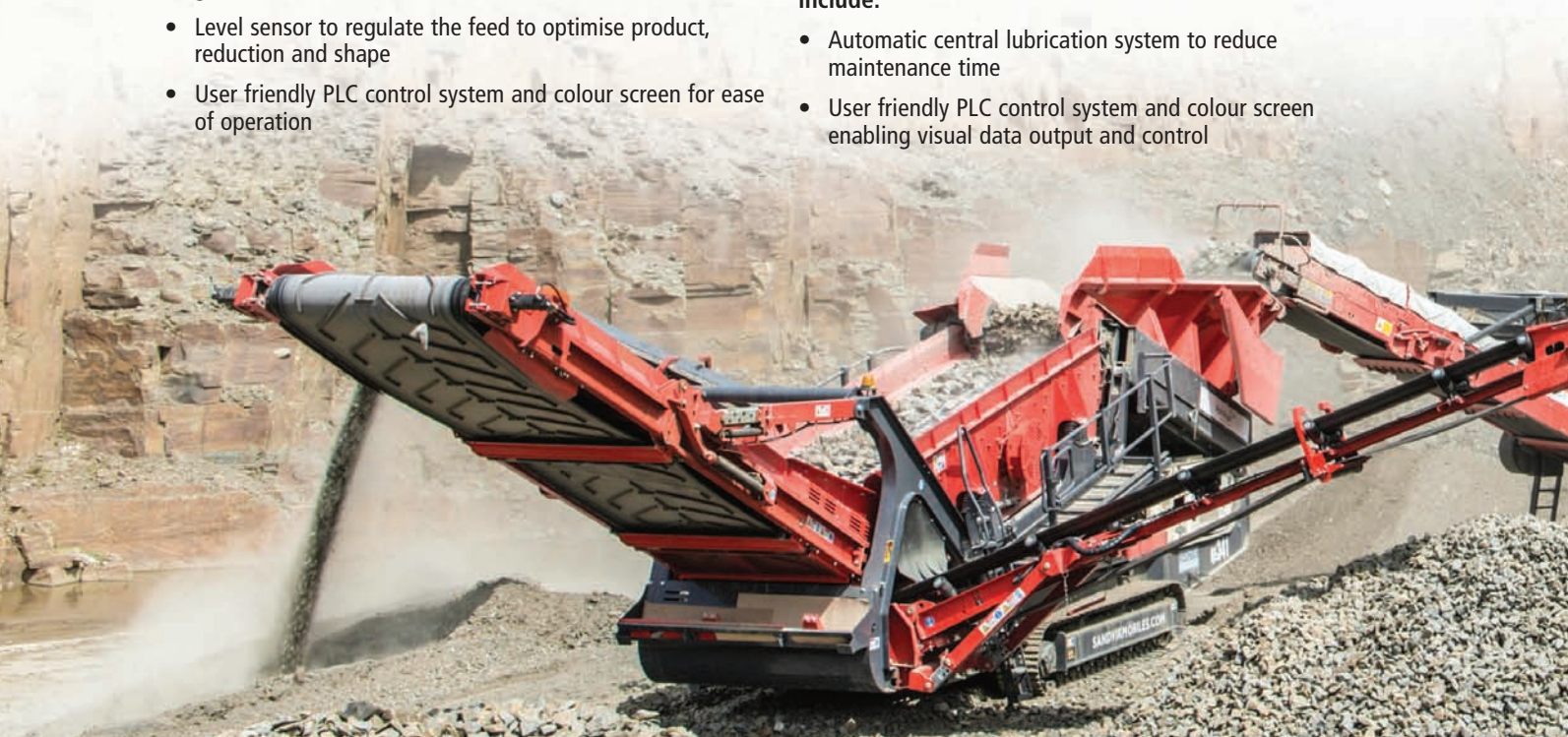
- Renowned Sandvik Hydrocone crusher for ultimate performance and reliability
- Remote camera for visibility of the crushing chamber from ground level
- Level sensor to regulate the feed to optimise product, reduction and shape
- User friendly PLC control system and colour screen for ease of operation



Two of the best-selling jaw crushers from the Premium range will also be on display. The larger model, the QJ341, possesses a class leading 1200 x 750 mm jaw size that has been designed for larger operations. Whereas the QJ241 is the most compact member in the range, but still boasts an impressive 1000 x 650 mm feed opening.

Both models feature a hydraulically adjustable CSS setting and are hydraulically driven which enables the machine to restart with a full crushing chamber. Both have proved to be ideal for recycling applications being fitted with a reverse crushing capability to relieve blockages and crush problematic sticky materials. The extended main conveyor may also be hydraulically raised or lowered, making it the ideal solution for rebar clearance in recycling applications. **Other features include:**

- Automatic central lubrication system to reduce maintenance time
- User friendly PLC control system and colour screen enabling visual data output and control





- Steel pipe work, for a maintenance free sealing solution and better heat dissipation
- Speed wheel on the main conveyor and an improved load control system for optimum feed regulation providing a continuous and uninterrupted crushing process

Also being showcased at this year's Scotplant is the QE341 tracked scalper, which has been developed with easier setup, operation and maintenance to the fore. It features an easy to operate electrical control system, which incorporates a number of features to improve both the operational effectiveness and machine safety.

The control simple system has colour-coded numerical push buttons and a visual display unit. This enables the operator to view engine and plant status. Prestart warnings on all plant functions and an auto start/stop facility together with a three mode selector function - setup, operation and tracking facility - all ensure that safety, as well as ease of operation, are paramount at all times.

With full radio controlled as standard, the QE341 is the ideal piece of equipment for contractors requiring the need to travel quickly from site-to-site. Its possesses hydraulically folding tail and side conveyors, and now has a rigid one-piece hopper designed for quicker set-up times and revised tail drum ground clearance for onsite tracking.

Other key customer focused benefits include:

- Wear resistant steel apron feeder as standard for maximum durability and performance
- Heavy duty screenbox with unique high throw and aggressive action
- Hydraulically folding maintenance platforms for ease of service and maintenance
- Massive stockpiling capability with over-wide conveyors to maximise delivery
- Can be configured for 3-way or 2-way split operation

These and other features are aimed at ensuring the QE341 is as user and environmentally focused as it is productive, efficient and versatile.

We look forward to seeing you at Scotplant 2016, which is a show that will allow us to focus on the local requirements of customers. The Sandvik Construction stand will be located at: **Avenue B, Stands 2 / 4**

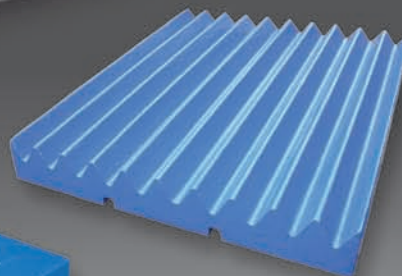
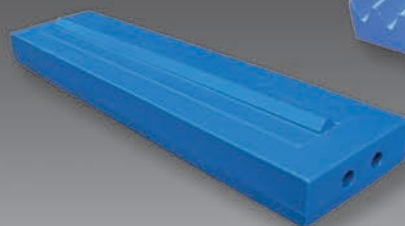
 www.hub-4.com/directory/296



crusher spares ...



Europe's leading aftermarket manufacturer and supplier of precision crusher spare parts and premium manganese wear parts for the Quarrying, Demolition and Recycling Industries.



Ccms
Cscepco[™]

Crusher Manganese Steels Limited

Vulcan Way, Hermitage Industrial Estate, Coalville,
Leicestershire, LE67 3AP, United Kingdom.

T. +44 (0) 1530 817 000

F. +44 (0) 1530 817 111

E. sales@cmscepco.com



The Genuine Alternative

www.cmscepco.com



National construction industry training specialist DTL wins major contract with Hanson UK

DTL (Develop Training Limited) - which has five training centres in England and Scotland - will provide electrical equipment training for more than 1,000 employees of the company, which is a leading supplier of heavy building materials to the construction industry, including aggregates and cement, and employs around 3,500 people in the UK.

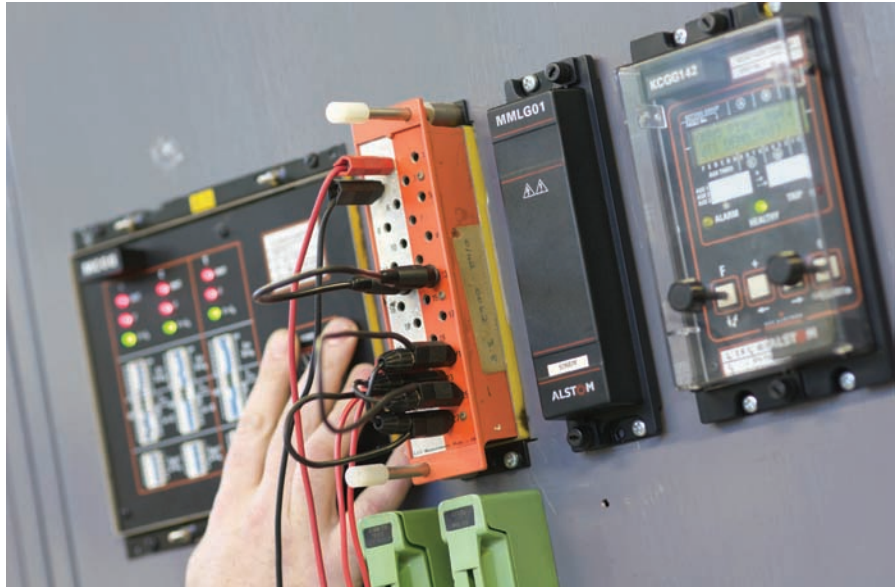
DTL was approached to run the training through its partnership with Mentor - the UK's leading provider of training in workplace transport, materials handling and mobile plant equipment - which has an existing relationship with Hanson UK.

The new contract comes after Hanson identified the need to enhance safe working practices on the repair, maintenance and management of high and low voltage electrical equipment. Around 1,100 people will take part in training from DTL, who will provide bespoke courses both at Hanson sites and its own sites, which include Derby, Swindon, Linlithgow, Bolton and York.

The rolling programme will run over 12 months with 19 courses varying from entry level - including circuit breakers, electrical re-setting, safe system function testing, light fitting, lamp training and safe isolation - to formal C&G qualifications including 17th edition wiring regulations, inspection and testing, explosive atmospheres (hazardous areas) and authorised person high voltage.

After its partner Mentor Training approached DTL to support the development of this major training programme, the company has worked in partnership with Mentor and Hanson to ensure the programme reflects industry best practice and that training is based on the kind of equipment typically used by Hanson. The training also covers the relevant compliance processes in operation at Hanson.

As part of the service, DTL is providing Mentor with its electronic training recording system, which automatically



delivers recall reminders when refresher courses are required and allows Mentor to manage Hanson's training needs accurately. It also provides site managers the visibility to monitor the levels of qualifications of individuals and identify those employees who need top up training. DTL has tailored the system to meet the specific requirements of Mentor and Hanson.

With DTL's online platform, Profiler Live, the training provider manages assessments electronically with an e-portfolio system that removes the need for trainees to carry heavy paper portfolios, and enables trainers and management to track each trainee's progress.

KOMATSU

Call the experts® for free energy.



KOMATSU
CARE

HB215LC-2 Hybrid: It makes a difference

Komatsu's latest Hybrid excavator is a product of in house technology and of 90 years' experience in construction manufacturing. The patented hybrid components harness free kinetic energy, convert it to electricity for a powerful and quiet performance to help reduce your carbon footprint and fuel consumption by up to 40%. Unrivalled on the market, the thousands of Komatsu Hybrid excavators working around the world have logged millions of fuel-saving hours for our customers. With the HB215LC-2 Hybrid excavator, you will enjoy a new experience, and the most reliable and advanced technology in the industry today.

Komatsu. For the people and the planet.



Marubeni

KOMATSU

Marubeni-Komatsu Ltd, Padgets Lane, Redditch, Worcestershire B98 0RT
Tel: 01527 512512 · Fax: 01527 502310 · www.marubeni-komatsu.co.uk

Terex® Materials Processing open global parts facility in Dungannon, Northern Ireland

Terex Materials Processing invest over \$7.2 million in a global parts facility.

With an investment of over \$7.2 million, this further supports their Parts and Service hubs and dealer networks globally.

The state of the art facility consist of a main office block of 10,300 sq ft, where a dedicated and knowledge team of parts experts are on hand to answer all parts technical and sales enquiries.

The facility has extensive warehouse capacity of 58,800 sq ft, with the addition of an external canopy of 7,000 sqft (providing additional overhead storage for larger product types).

Three dock levellers provide easy access for deliveries and container shipments of the large scale parts inventory. With over 86,000 live inventory parts, the facility is supported by a fully automated Oracle Warehouse Management System.

In addition, to the 168 bays of high bay racking, Terex has installed leading edge technology with three Hanel Lean lifts; an automated storage and retrieval system each with 60 trays (2 with max load per tray of 250kg & 1 with 470kg per tray.

Supporting this technology are Linde electric material handling equipment, including an order picker and aisle masters capable of working at 9 metres high. All this equipment ensures that Terex has the ability to expedite all orders efficiently as you would expect from a world class facility.

Why choose Terex Genuine Parts?

Terex® Corporation is a global company designing and supplying a complete range of genuine spare parts that are competitively priced, of the highest quality and designed specifically for use in Powerscreen®, Terex® Finlay, Terex® Minerals Processing Systems and Terex® Washing Systems equipment and Terex® Environmental Equipment.

Understanding that any loss in productivity directly impacts on the customers' bottom line, Terex place much importance on making their parts support world class and have a specialist team of product parts experts available to address all technical requests. Terex use only the highest quality suppliers ensuring that equipment is optimized for maximum productivity and efficiency.



Aiming to keep customers moving 24 hours a day, 7 days a week, 365 days a year; whether jaw liners, meshes or replacement components are required, only genuine Terex® parts guarantee the Safety, Functionality, Reliability and residual value for your equipment in the Recycling, Aggregates, Mining and Washing Industries.

Terex Material Processing - supporting your equipment with industry leading facilities, engineering support and technical expertise coupled with a vast stock of genuine Terex Parts.



www.hub-4.com/directory/8597



RUD Chains Ltd

Conveyor Round Link Steel Chain & Attachment Spares for Bulk Handling

- Robust, wear resistant round link steel chain for conveying
- Bulk materials handling
- Horizontal, vertical & inclined conveying capabilities
- Transportation of fertiliser, potash, salt, cement, sand, gravel, gypsum
- Spare parts available on request

www.rud.co.uk **01227 276611**

RUD Chains Ltd, Units 10-14, John Wilson Business Park, Thanet Way, Whitstable, Kent, CT5 3QT



MIXING SOLUTIONS FOR EVERY PROJECT



rapid
www.rapidinternational.com

bauma 2016
11.-17. April, München
Stand C1. 343



Rapidmix Enables Reuse of Waste Fines for Gallagher Group

Rapid International Ltd (County Armagh) has recently supplied Kent based Gallagher Group with a new Rapidmix 400CW mobile continuous mixing plant. The Rapidmix machine is operated primarily at the group's Hermitage Quarry site and is also utilised on location if haulage presents an issue.

Established in 1973, privately owned Gallagher Group is one of Kent's leading Building, Civil Engineering, Aggregates and Property Development companies. Having previously purchased a 3m³ Rapid pan mixer for installation in a concrete batching plant system, the company was already confident in Rapid's mixing technology capabilities.

Gallagher's Rapidmix plant is employed in the production of the company's 'Gallapave' range of HBM (Hydraulically Bound Material) and RCC (Roller

Compacted Concrete). HBM is used as sub-base and base course to replace traditional capping layer, type 1 sub-base and tarmacadam base course in road construction. The benefit of HBM is the reduction in road digging. This in turn leads to reduced costs as less soil requires excavation and transportation to landfill. In addition, Geotextile membrane isn't required. RCC is a semi dry concrete product that is a wearing surface used where strong pavement is required to stand up to massive loads and specialised equipment. Airport runways and aprons are particularly suited to RCC. RCC is also typically used for parking, storage and warehouse floors, container storage & handling, port pavements. RCC offers high flexural strength, doesn't require forms or finishing and is fast and economical to produce.

Commenting on their purchase, Gallagher Group said, "With the Rapidmix 400CW we are using the waste fines from our fixed primary crushing plant for our HBM products, saving dump trucks moving fines and space in our landfill. The Rapidmix 400CW is a well-built piece of equipment but as with every piece of new equipment there is always minor initial teething problems. The customer service that Rapid International gave was second to none, most queries were resolved over the phone with the remote login access from head office in Northern Ireland."


Victor Pickering, Rapid Sales - UK Mainland, remarked, "Rapid is delighted to have partnered with Gallagher Group on the purchase of the Rapidmix 400CW. The new Rapidmix has afforded Gallagher Group the opportunity to profit from its previously redundant waste fines and in turn broaden their supply of new materials, opening new market channels."

Semi dry mixes, such as HBM and RCC, are typically less economical to produce in a conventional static batch plant. The Rapidmix mobile continuous mixing plant solves this problem as it is specifically designed for semi dry mixes, ensuring a high output of high quality homogenous material at all times. The on board high speed Rapid Twin Shaft mixer contains chill cast steel mixing paddles which are intermeshed in a specially phased relationship to optimise mixing action, whilst maximising throughput.

The new Rapidmix 400CW plant produces high quality controlled mixtures for utilisation in a range of Civil Engineering applications - from airport runways and contaminated land treatment to dam construction and soil stabilisation. The mobile nature of the plant combined with the technically advanced design is most advantageous in meeting the supply and demand requirements on projects. The Rapidmix 400CW provides a cost effective solution for projects where high specification compliance coupled with a high volume fast throughput are critical.

Fully mobile and self-contained, the Rapidmix 400CW from Rapid International offers a complete plant powered by its own power source, with on-board compressor and generator. Fitted with a self-erecting system, using hydraulics, the plant can change from travel mode to fully operational within a few hours. Available with outputs of up to 600 tonnes per hour, the Rapidmix provides feed rates that are fully adjustable for the aggregate, cement and water systems.


The recently updated unit incorporates full weighing options for all materials - aggregates, cement and water - which means the new generation Rapidmix 400 CW offers record keeping that is automated, precise and detailed.



Valley Spring[®]

Valley Spring is a member of the Springmaster Group

**SPECIALIST PRODUCER OF MEDIUM AND LARGE
DIAMETER COMPRESSION, EXPANSION
AND TORSION SPRINGS.**



Pottery Lane East, Chesterfield, Derbyshire S41 9BH
Tel: +44 (0)1246 451981 Fax: +44 (0)1246 454327
E-mail: sales@valleyspring.com www: http://www.valleyspring.com



HARDOX®
WEAR PLATE



THERE IS ONLY ONE HARDOX®

Genuine Hardox only comes from the Nordic steel company SSAB. Hardox has for more than 40 years set the standard for extreme wear resistance and extreme toughness.

You can always tell it's an original Hardox wear plate from the marking printed over every plate's surface.

The marking will also tell which steel batch it comes from, the serial number, its length, width and thickness. It's like each Hardox wear plate having its own passport. Just by looking, you know you are getting the real thing.

Learn more about the world's only Hardox wear plate at hardox.com

SSAB Swedish Steel Ltd
Suite 6, Cranmore Place
Cranmore Business Park, Solihull
West Midlands, B90 4RZ, Great Britain
T +44 (0) 121 704 7300
E sales.uk@ssab.com

SSAB



Terex® Minerals processing systems launch new modular MC380X Cone Plant



One of the world leaders of material processing technology for modular, portable and static crushing and screening equipment is pleased to announce the launch of the Terex Minerals Processing MC380X Modular cone plant.

As part of its continuing product development strategy for the modular product line, Terex® Minerals Processing Systems is pleased to launch the MC380X Modular Cone Plant for utilization by aggregate and mining customers worldwide.

The NEW MC380X cone module features the Terex® Cedarapids high performance MVP380X cone crusher. The MC380X boasts numerous features that increase the machine's productivity and ease of use.

Major new enhancements include high speed clearing of jammed material; quick crusher separation capability for faster manganese changes; and user friendly computer controls enclosed in a robust weather-protected control panel. Other key features of the MC380X include an extra-heavy duty I-beam frame, galvanized steel structure including walkways, stairs and guard rails as standard. The module structure and all its components are CE Compliant.

Modular Structure

The modular structure bolts together on-site boasting quick set up times using basic tools. Pre-wired with a plug and play design the Terex MPS modules require minimum on-site

wiring. The flexible design of the module enable permits for two locations for the discharge conveyor for easy transport and site set up.

About the MVP380 Cone

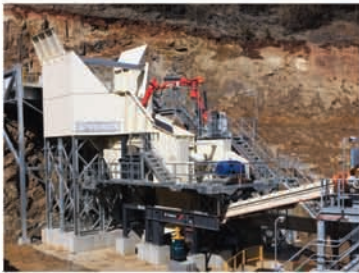
Terex® Cedarapids renowned MVP380X cone with patented Rollercone® design provides high efficiency crushing from a single drive electric motor 300 hp (225kW). The cone also have an adjustable motor mount slide-base tensioning system with V-belt drive, drive guard, V-belt motor sheave, hub and key. Unique to Terex MPS modular plants are the fact that the hydraulic and lube skids are both positioned in the modular structure to protect them and are part of the pre-wired set up.

Optional Equipment

Optional equipment includes a motor starter kit to run off-plant cone feed conveyor, product discharge conveyor and feeder, easy upgrade overflow chute and full length skid base.

Global Modular Product Manager, Terex MPS, Mark Crooks said, "We are very proud to add the high performance MC380X cone module to our expanding CR modular product line, further increasing our plant building stations, improving our application capabilities between 150 - 450 mtpd and in particular, showcasing the innovative design and modular plant controls created by our experienced engineering team".

READY TO WORK



MJ42 and MJ47 Jaw Modules



MC1000, MC1300, MC380X & MC450X Cone Modules



MV2000 VSI Modules



MHS6203 & MHS8203 Horizontal Screen Modules

Modular Electric Crushing & Screening Solutions

Pick and choose modules to fit your specific needs or we can tailor a system for you.

- ▶ Up to 450 tph
- ▶ Premium quality crushers and screens
- ▶ Pre-engineered, pre-wired, pre-built, pre-tested

Jaques® | Cedarapids® | Canica® | Simplicity®

Visit www.terexmps.com to learn how we can work for you.

Victoria: Tel 03 8794 4100 | New South Wales: Tel 02 9604 6524

Queensland: Tel 07 3630 0866 | Western Australia: Tel 08 6254 4100



TEREX®

Minerals Processing Systems

Strong Heritage, Strong Future.

Terex, the Terex Crown design, Jaques, Cedarapids, Canica, and Simplicity are trademarks of Terex Corporation or its subsidiaries. Copyright 2016 Terex Corporation.

Reliable level measurement can improve screen-house productivity and reduce downtime

Introduction

Reliable level control is essential in the harsh environment of the quarry screen-house, where freshly-mined and crushed stone is sorted by size. However there are many challenges that this vital monitoring equipment will have to withstand, both in terms of the environment of the screen-house and the characteristics of the product being monitored. In this white paper level measurement experts Hycontrol examine the issues surrounding level monitoring in screen-houses and outline the optimum measurement solutions for this challenging environment.

Screen-houses are a standard fixture in the quarry industry. Designs and sizes of screen-houses will vary from site to site, but they all fulfil the same basic function. Usually, belt conveyors are used to drop in processed, crushed stone from the quarry site at the top of the screen-house. The rock is then passed over a series of different-sized vibrating grilles which initially allows the smallest pieces of dust and stone to fall through into a bin below.

As the remaining unsorted rocks descend a 'staircase' of slightly angled, vibrating screens, progressively larger pieces of rock up to a size of 60mm are allowed to pass through into the appropriate bins. After screening, the sorted stone can be released from one of the discharge points at the bottom or the side of the bin for use in a wide range of potential applications including aggregate, the production of concrete, roadstone and general construction.

The challenges of screen-house level monitoring

Screen-houses are large, difficult, noisy environments full of potential hazards for workers, including high levels of dust, limited visibility and large oscillating plant. As such, appropriate goggles, filter masks and ear defenders must be worn at all times by staff working in the buildings. Clearly this abrasive environment will have a detrimental effect on any equipment that is used, including the vital level measurement instrumentation used to monitor the sorted stone in the bins. Reliable level control is essential not only for inventory purposes when the stone is removed, but more importantly for preventing overfilling of the bins. Product overflow will inevitably lead to equipment damage, plant down-time and a costly clean-up, not to mention the potential for Health & Safety issues. The worst-case scenario is if excess product lifts the screens off their vibrating mountings. Bearing in mind that they can be mounted up to 30 metres above ground level, this is nothing short of a catastrophic event. It will likely cause extensive damage to the screen-house, creating a hazardous working environment and leading to significant down-time whilst the very difficult and potentially dangerous task of repairing the screens is carried out. The cost of such an event is horrendous with lost production and repair charges.

The nature of the screen-house environment also restricts the level measurement options available. >





Strain-gauge load-cell and force-based systems, which work by fitting special strain sensors to key parts of the load-bearing structure of a vessel, are highly sensitive devices unable to cope with the constant vibration of the screen-house structure.

Contact-based level measurement technologies such as TDR (Time Domain Reflectometry, sometimes erroneously called 'radar on a rope') and out-dated plumb-bob meters are both unsuitable for the screen house environment. Whilst both technologies have many other successful applications in the quarry environment, in the screen-house they are far too likely to be damaged by the falling stone and so would be limited to use on the dust bins only.

Therefore we are left with a choice of two technologies that are suitable for screen-house level measurement, namely ultrasonics and radar.

Ultrasonics

Ultrasonic technology provides a highly cost-effective, easy-to-install, non-contact solution for a wide range of solids level measurement applications. The transducer, mounted at the top of the vessel, emits sound waves that are reflected back from the surface of the material. The instrument measures the time-of-flight of these waves in order to calculate distance, from which is discerned the level of product in the vessel.

Frequencies as low as 5 kHz are used on long range solids materials and higher frequencies at 40 kHz or above are used on shorter ranges. The latest low frequency ultrasonics can be used for ranges of up to 60 metres, although a number of environmental and operational factors within the silo can reduce this range. Traditional ultrasonic devices struggled with the effects of false echoes and temperature changes. However, the latest corrective software can compensate for a number of adverse operational factors relating to weak and false echoes caused by dust, internal silo structures (for example ladders or cross braces) and temperature changes affecting time-of-flight.

It should be noted that when using ultrasonics, consideration has to be given to the so-called dead band, a range directly below the transducer face where measurement is not possible. This area can vary from 300mm to 1500mm depending on the frequency being transmitted. However this usually only presents a problem for applications with shorter measurement ranges, rarely affecting screen-house applications.

Radar

FMCW (Frequency Modulated Continuous Wave) Radar level measurement systems use high frequency microwave signals (24-26 GHz) that are unaffected by dust, pressure, temperature, viscosity, vacuum or foam. The measured level is proportional to the difference in frequency between the transmitted microwaves and those reflected back from the product surface.

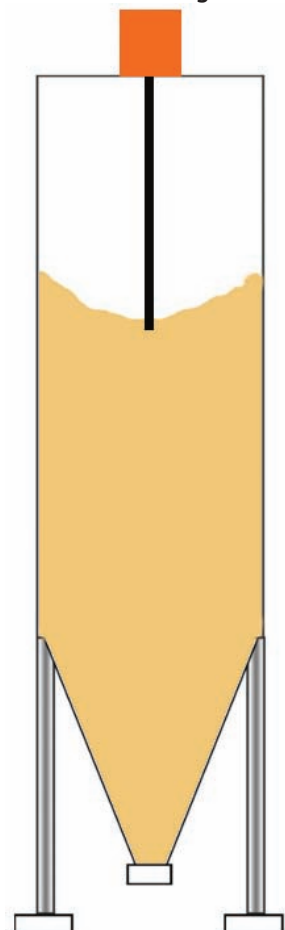
This technology is suitable for measurement ranges up to 80 metres and provides high levels of accuracy for certain applications. However the effectiveness of radar technology is dependent on the dielectric constant of the material in the vessel. Radar usually works better on products with a dielectric constant of greater than 2.0 and in the instance of rock in a screen-house this is not generally an issue. Radar equipment is more expensive than ultrasonics which may be a deciding factor for certain applications.

Effects of Filling and Emptying

It is important to understand the way in which vessels are filled and emptied when installing level measurement systems in order to optimise performance. This is especially important given the unusual shape and properties of a screen-house. In a normal silo with a width of less than 3 metres, with centrally-located single fill and draw-off points, the way in which material behaves is usually repeatable. A single level sensor, located away from the fill point, will usually provide reliable and consistent results (See figure 1). Please note that, depending on the size of the vessel and properties of the material, it may be necessary to locate the sensor an equal distance between the centre and outer edge of the vessel.

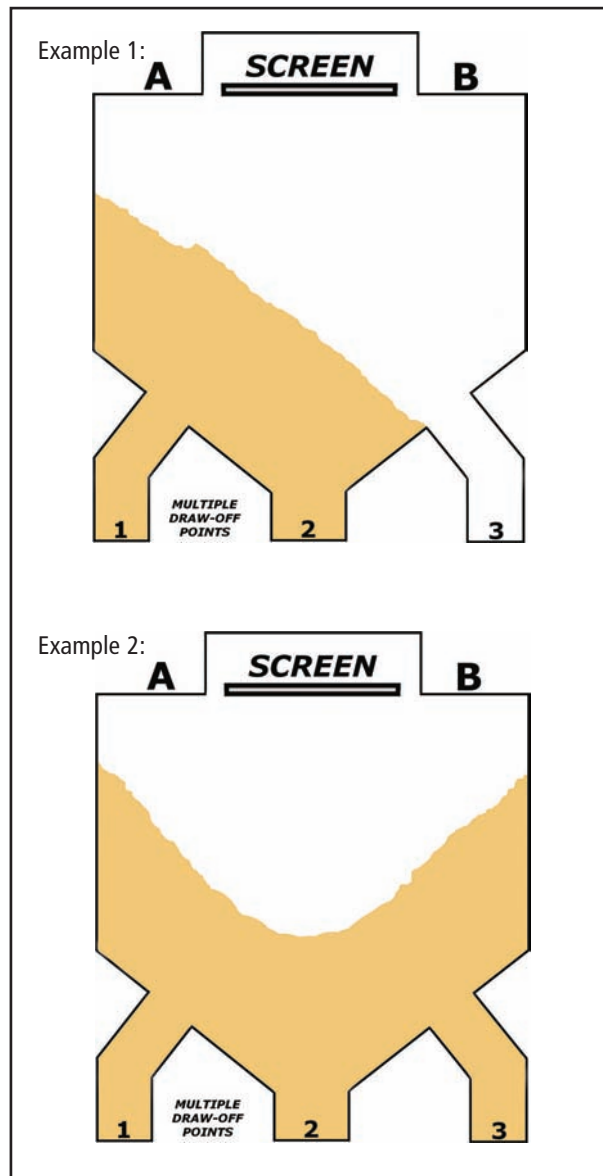
Complications can occur with vessels that have multiple fill and draw-off points, as in the case of quarry screen-houses (See figure 2). Typically bins have three discharge points and this will result in unpredictable product level behaviour. This means that a single sensor located on one side or the other of the vessel will not provide an accurate gauge of the contents - for example product may come to rest largely on one side of the bin, and a sensor located on the opposite side may erroneously show the tank to be empty or near-empty. Using the vessel shown in example 1, this would be the case for a sensor located at point (B). With the 'staircase' of screens that runs down the

Figure 1



centre of the building it is not possible to centrally-locate a sensor in a screen-house - the falling product would soon erode it away. Whilst covers could be fitted it would be totally impractical to gain access in order to service and conduct maintenance on the sensor.

Figure 2



The most effective solution is to mount two level sensors meters, each an equal distance from each side - in the examples above this would be at points (A) and (B). The readings from each sensor are then used to discern the average product height in the vessel. This is done simply by feeding the information from the two probes to a site PLC or locally-mounted display panel where the readings from (A) and (B) are added together then divided by two, giving an average contents level for the vessel. This also provides the user with separate levels for both sides of the screen, making it easier to decide which point to draw the product from - for instance, in example 2 above the product should be taken from draw-off points (1) and (3) to lower the product height at the sides of the bin.

Maintenance

As we have seen, level equipment in a screen-house is exposed to potentially damaging abrasive material, dust and vibration throughout its working life. Not surprisingly the



cleaning and maintenance of level equipment in this unpleasant environment is often neglected.

This is a fundamental error and one that will ultimately accelerate the failure of the equipment. For process-critical equipment, maintenance is essential to ensure ongoing functionality and should be regularly scheduled. This should include not only cleaning and visually checking that the equipment has not become damaged, but also a thorough check of the functionality and calibration of the sensors. This will ensure optimum output levels and eliminate the risk of signal drift. The best solution is for this to be carried out by experienced specialist engineers as part of a regularly scheduled maintenance programme.

Conclusion

The need for reliable level control in screen-houses is clear and well-understood by quarry staff. However achieving that reliability in such a harsh environment continues to be a challenge. It is now accepted that the use of a single sensor will not provide sufficient accuracy, but two sensors will give optimum performance. The chosen instrumentation must provide the precision and reliability required to monitor through a dusty atmosphere, whilst having the robustness and durability to cope with damaging environmental conditions. Ultrasonics and radar both meet these different challenges and, when correctly installed, provide reliable level measuring solutions for the screen house. In parallel, regular maintenance is essential for maintaining and prolonging the working life of this equipment. By ensuring all these factors are considered, better screen house performance and a lower overall cost of ownership can be achieved.

THIS YEAR AT SCOTPLANT 2016... VOLVO TRUCKS AND CONSTRUCTION EQUIPMENT ...PROUD TO POWER BETTER BUSINESS



**SCOT
Plant
2016**

This year at ScotPlant 2016 you will have the opportunity to witness the formidable force of Volvo Construction Equipment and Volvo Trucks 'working side by side' forming an unbeatable combination for better business.

Visit us on Avenue E stand 1 and Avenue F stand 1 and discover how our extensive range of products and legendary commitment to customer support can transform your business.

Volvo Construction Equipment Division
Volvo Group UK Ltd
Duxford, Cambridge CB22 4QX
Telephone: 01223 836636 Fax: 01223 832357
sales.vcegb@volvo.com
www.volvoco.co.uk

Volvo Truck and Bus Centre North & Scotland
9 Fifty Pitches Place, Cardonald Business Park,
Glasgow, G51 4GA
Telephone: 0141 810 2777 Fax: 0141 810 2788
garry.whitelock@volvo.com
www.volvonorthandscotland.co.uk

Volvo Construction Equipment



DUO Africa increases production for Tebere Concrete Co Ltd

Situated outside of Sagana, approximately 80km from Nairobi, Tebere Concrete Co Ltd is a family run business producing aggregates for the local markets.

The company was originally founded by Rajesh Shah & his brothers and from very basic beginnings they have successfully operated a 60tph plant supplying a local demand.

The original plant consisted of an Indian manufactured Marsman primary jaw, secondary impactor and a small 3 deck incline screen. Operating at 60tph the plant had constant production issues and efficiency had dropped.

A major increase in production:

With massive increase in demand the company contacted DUO Africa and after consultations, a factory visit and the realisation of the technology and aftermarket support available the company duly placed an order with DUO Africa for a new plant.

Rajesh commented, "We needed to increase our production and after on-site discussions and a visit to the factory I was very impressed with the technology and the back-up that DUO Africa could provide."

An order was subsequently placed and DUO Africa supplied a WJ1100-750 Primary Jaw, Terex Pegson 900 Autocone Secondary and a Terex MIS5184 - 4 deck screen. The new plant has increased production capacity to 125tph and doubled production of high quality aggregates with a flakiness of 21% which is well below market acceptability of 35%.

Further demand:

Since the new plant was installed and commissioned, demand has increased further from as far away as Nanyuki. The development of this new market, coupled with the difficulty of being able to stockpile aggregate has made the company realise that they must now increase production again and have tasked DUO Africa to supply a bigger plant to satisfy the market demands.



Rajesh further commented, "We have returned to DUO Africa because we are very pleased how they have supplied good equipment alongside the knowledge and back-up to help us as the market has developed. We have also had to increase our fleet of off-road dump trucks and earthmoving equipment and DUO Africa have sourced a 30 tonne articulated dump truck for us as well, so we are very pleased. These are exciting times for Tebere and DUO Africa are proving to be a perfect partner."

Luke Talbot - Director of DUO Africa commented, "It was obvious by the way things were going for Tebere that they would need to further increase production so we are supplying a new high quality plant which will be capable of 220tph. This new plant will also reduce the flakiness even lower than the current 21%.

We have our engineer's currently on-site working on the expansion and upgrading the plant."

A very successful partnership indeed!



www.hub-4.com/directory/928



UK Designed & Built

Dry Bulk Materials Handling Equipment

Design & Supply Specialists

Quarrying | Cement
Minerals Processing | Biomass
Water Treatment & much more

Unit 10 Brunel Court, Waterwells Business Park, Quedgeley, Gloucester, GL2 2AL United Kingdom
www.sneng.co.uk | sales@sneng.co.uk | +44 (0)1452 725210



DUST
FILTRATION



SCREW
CONVEYING



STORAGE
SILOS



LOADING
BELLOWS



MIXING &
BLENDING



PNEUMATIC
CONVEYING

Halmerend Minerals in love with their new Portafill 5000 Screener



Riverside Machinery Ltd have recently supplied a new Portafill 5000 screener to Staffordshire based company, Halmerend Minerals.

Halmerend Minerals, a family owned company specialise in producing an aggregate for use in ecohouses and ecobuildings. They also specialise in the drying of sands for industrial use.

Conversations between Riverside Machinery and Halmerend Minerals started after they realised that their existing mobile screener was just too big and cumbersome for their yard.

A Portafill 5000 screener was subsequently hired to Halmerend Minerals to screen the crushed material from the impact crusher down to a 17mm single sized aggregate.



John O'Neill comments: "from the moment the hire started it was clear to see that the machine would not be leaving. Due to the compact nature of the screener and the high energy efficiency of the screenbox the machine proved night and day between it and the older screener".

The Portafill 5000 is a very compact machine weighing only 14 Tonne. The heart of the machine is the 10ft x 4ft screenbox which is the most aggressive screenbox in the marketplace. Power is provided by a Deutz 2011 engine.



www.hub-4.com/directory/12459



More than 200 exhibitors expected for CQMS'17

With interest building every day, work is now well under way for CQMS'17. The all Ireland construction and quarry equipment show will take place at Molloy's Quarry, Tinnycross, Tullamore, Co Offaly on April 21st and 22nd 2017 and will be the ideal event for machinery users and buyers to view the widest range of the latest equipment working in authentic surroundings.

The organiser is expecting around 200 exhibitors at the event including equipment OEMs and national dealer as well as a major showing from local quarry equipment manufacturers.

As well as drawing the key industry movers and shakers from the Irish and Northern Ireland industry, the exhibition will be a showcase for industry professionals from Europe and around the world to visit Ireland and see what it has to offer in the crushing and screening equipment sector, much of which is based on the island of Ireland.

With many stands already booked the show is promising to be significantly bigger and better than the inaugural event which was held in 2015 with the organiser making more space available for an expanded line up of top brands and their dealers. To promote the event, CQMS will also be exhibiting at the Hillhead show in the UK in June.

CQMS was launched by Machinery Movers Magazine in 2015 to meet the Irish industry's requirement for a trade event where prospective buyers could check out construction and quarrying machinery in its natural environment. The response to the first event was overwhelmingly positive with a large number of exhibitors signing up for the 2017 event before the 2015 show closed.

To register interest or if you would like to exhibit contact brian@machinerymovers.ie, Tel: 00353 (0)83 4335968.

BORN TO RECYCLE



721F WASTE HANDLER

1. RECYCLING IS ITS JOB

Heavy Duty Cooling Cube
Heavy Duty Axles
Heavy Duty Guards (x 14)
Best-in-class payload

2. LESS FUEL AND WEAR

Fuel saving engine: SCR
Fuel saving transmission:
ProShift
Extended tyre life with open
diff with 100% diff lock

3. A SAFE CHOICE

SCR technology
arrests sparks*
Ground maintenance
from the rear

* Case 721F meets spark arrester criteria 5100-c of USDA Forest Service Standard

CASE Customer Assistance
00800-2273-7373

www.casece.com
EXPERTS FOR THE REAL WORLD
SINCE 1842

CASE
CONSTRUCTION

Anaconda will be using Hillhead as the launch pad for their new DF514 'Tracked Scalping Screen'



Anaconda Equipment International, the Northern Ireland based manufacturer of screening and conveying equipment, will launch the DF514 Tracked Screener at the Hillhead exhibition in Buxton, England (June '16). Anaconda will be exhibiting at Hillhead for the fourth time and will show the latest products from their range on STAND E9.

The New DF514 is certainly a move up the scale in terms of machine size. The DF514 has a 14' x 5' (4.27M x 1.52M) double deck screenbox, a CAT 4.4 water cooled engine

(100HP), belt or apron feeder option, three integral stockpiling conveyors and a crawler track chassis for ease of movement around/off site. The unit has hydraulic folding hopper sides as standard, hydraulic screen angle adjustable from 15-19°, hydraulic screenbox raise/lower for ease of mesh change and wired remote as standard (radio remote optional).

If you would like more information on the new DF514 or any of the mobile screens and conveyors offered by Anaconda Equipment then please get in touch with your local dealer representative. www.anacondaequipment.com



www.hub-4.com/directory/12687

CRUSHING & SCREENING EFFICIENCY

Gipo R170FDR, 1,000 tph
tracked impact crusher

www.AGG-PRO.com

J45 Tracked Jaw
Crusher + S190
Vibrating Tracked
Screener

McCloskey

Aggregate Processing & Recycling Ltd
Hedging Lane, Wilnecote, Tamworth B77 5EX

www.agg-pro.com
T. +44 (0)1827 280139 F. +44 (0)1827 287770 E. info@agg-pro.com

Super-sized and super-powered

Powering up for a new era in bulk materials handling



Andreas Klottka (Managing Director AUMUND), Malcolm Youll (Managing Director SAMSON Materials Handling), Franz-Walter Aumund (President of AUMUND Group) (photo AUMUND)

SAMSON Materials Handling - creators of the original SAMSON Material Feeder - has been at the forefront of the bulk materials industry for almost 50 years. From modest beginnings as an engineering partnership in rural Cambridgeshire (UK) the company launched the flagship product, the SAMSON Material Feeder. This product provided an effective bulk handling solution which quickly sparked interest worldwide. Becoming part of the AUMUND Group in 2002 enabled SAMSON to provide partners with the opportunity for synergies and increased international support networks. With a new Managing Director, Malcolm Youll appointed in 2015, the company is set for exciting times ahead.

We asked Malcolm Youll: Since your appointment in June 2015, have you noticed any trends in mobile bulk materials handling?

There are always pressures for increased efficiency and maximising ROI. Commodity price fluctuations have a strong influence on the prices that companies are prepared to pay for bulk handling equipment. The key issue for SAMSON is to

provide equipment that is reliable, easy to maintain and future proofed so that operating costs are kept to a minimum and our partners can do business with confidence.

We have seen a tendency in recent projects for "super-sizing", that is to say larger, longer or extreme strength machines. Projects such as:

Stormajor® Boom Feeder BF08

Baoshan Iron & Steel in China have recently taken delivery of our largest boom feeders ever - the BF08. These super-powered machines are designed for continuous operation with a capacity of 1200 tph of iron ore and 500 tph of coal. Using a 15 metre boom they create stockpiles of 8 metres high. This design can be expanded to a 30 metre boom with a stacking height of 15 metres. These machines are flexible in operation and with their diesel motor drive can operate fully autonomously requiring no fixed infrastructure or power supplies.

Stormajor® Boom Feeder BF08 with 20m boom

Two high reaching Stormajor® Boom Feeders BF04 have been commissioned for Prumo Logistica the private Brazilian company engaged in establishing the super port of Açú in Brazil. These have been developed for stockpiling coal, coke and bauxite with an extra-long boom length of 20 metres. This makes them ideal for high stockpiling as they discharge material to form a radial stockpile up to 12 metres high. They provide a luffing range of 0-27 degrees and a slewing range +/- 60 degrees. They are designed with output rates of 720 tph for coal and 1000 tph of bauxite.





Samson® Material Feeder MFD6 with heavy duty chain.

Two 85 ton material feeders have been recently delivered to Namdeb Diamond Corporation's Mine in Orangemund, Namibia. These were tailored specifically to Namdeb's requirements to efficiently handle bulk aggregates including desert sand, gravel and tailings direct from 40 ton trucks and provide a buffer holding capacity of 66.2 tons. These super strong machines, fitted with heavy duty chain, have a regulated output rate of 1000 tph, direct to an on-going conveyor.

What future developments do you envisage for SAMSON?

SAMSON has always been in the fortunate position of being able to provide equipment tailored to specific requirements so, for example, if a client has a smaller jetty, an unusual quay configuration or site access issues SAMSON engineers can tailor equipment to suit individual circumstances. We have experience in designing equipment to convey a huge variety of materials from free-flowing grains up to heavy aggregates.

The original SAMSON Feeders were conceived as a mobile solution to receive general bulk materials such as coal and aggregates direct from tipping trucks where fixed plant was not an option. They eliminated the need for truck ramps and



fixed civil works and were enthusiastically adopted by hundreds of users worldwide.

Our technology and knowhow in mobile equipment development has been incorporated into a range of products over the years including the Stormajor® (which combines the benefits of the SAMSON® Feeder with a radial and luffing outloading boom conveyor), ECO HOPPER (providing dust controlled grab unloading) and of course the Shiploader with the option of add-on conveyor components to make up a modular shiploading system.

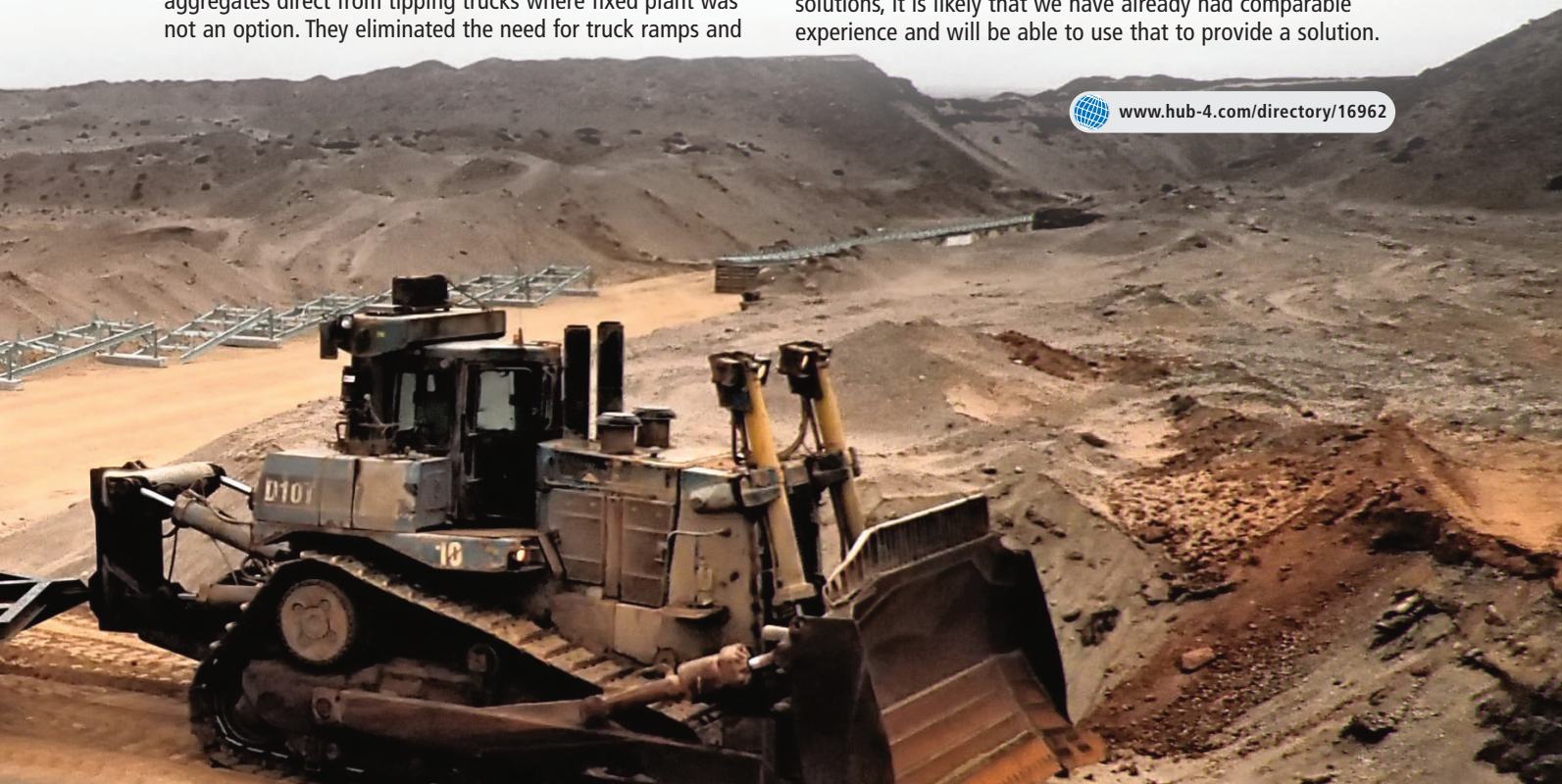
Our engineering flexibility has always been key to our strength and a major benefit for the development of our partners. SAMSON prides itself in providing solutions.

At SAMSON our aim for the future is to exceed expectations in bulk materials handling, both in concept design, execution and aftersales service. SAMSON equipment is built to last, as are our relationships with partners.

We would encourage all potential partners to approach us to see if there are solutions to their particular issues, even if they had previously dismissed the possibility of dedicated bulk handling equipment. SAMSON excels where standard product solutions are not viable. With almost 50 years of designing solutions, it is likely that we have already had comparable experience and will be able to use that to provide a solution.



www.hub-4.com/directory/16962



blademasterXtreme

THE CUTTING EDGE

Delivering
outstanding
results in the
most extreme
operating
conditions

- Dozer, loader, Grader edges
- Grader Overlays
- Dozer hot Cupped end bits
- Heel plates
- Segments

blademasterXtreme
SUB ZERO

Harelaw Industrial Estate, Annfield Plain, Stanley, Co. Durham DH9 8UR United Kingdom

CON MECH ENGINEERS



T: +44 (0)1207 230621
F: +44 (0)1207 290100
E: sales@conmecheng.com
www.conmecheng.com

THE HEARTBEAT OF OUR INDUSTRY
bauma 2016
April 11-17 Munich
Hall 5, stand 227/1

Made in the United Kingdom



Tunisia Quarry Loyal to Case Wheel Loaders for Over 25 Years



The quarry 'Les Carrières de L'Ariana', a family business in the Raoued-Ariana region of Tunisia, purchased the first Case 821 wheel loader in 1989. Founder Mohamed Djelassi was so delighted with its performance and the support he received from his Case dealer Sotradies, that the company remains loyal to the brand and dealer to this day - even after his son, Omar Djelassi took over the management of the company in 2011.

"Fast cycles, low fuel consumption, high reliability: that's why we like Case wheel loaders"

'Les Carrières de L'Ariana', which covers an area of 14 ha, produces aggregates for the building industry and for concrete mixes. In addition to the original 821, the quarry relies on four Case wheel loaders - a 921 and a 1288 purchased in 1995 and two 921C units - to load the trucks day, day out.

"When choosing a wheel loader we look first of all for a powerful and highly reliable machine," explains Omar Djelassi, who was the company's technical director until he took over as General Manager. "Case wheel loaders deliver in spades on both counts. They keep up consistently high levels of performance, with extremely fast cycles in loading the trucks and efficiency in transport applications. And they do all this with exceptionally low fuel consumption - great for our bottom line! As for their reliability, we know we can absolutely count on them to perform tirelessly, day after day in the tough conditions of the quarry. Just think that our first Case wheel loader, the 821 purchased by my father, is still going strong with over 67,000 hours on the job. It is a special machine to me; I take care of its maintenance and repairs personally, and it's a delight."

"The excellent relationship with our dealer is one of the key reasons for choosing Case"

Mr Djelassi is very satisfied with the support 'Les Carrières de L'Ariana' receives from Case dealer Sotradies: "The good relationship with our dealer is very important to us: this and the equipment's performance are the reasons we choose Case for our equipment. Sotradies give us a very high level of after-



sales support. Parts availability, which is critical to keeping our machines working, is very good. And, when necessary, Case steps in to support our dealer so that downtime is kept to an absolute minimum."

Sotradies, part of the UTIC group and Case dealer since 1996, serves construction businesses from their headquarters in Tunis and three sales points in Sousse, Sfax and Kébil. They support customers with their well equipped workshop and provide on-site technical service with their mobile workshop. "We know that, as Mr Djelassi pointed out, the way we support them plays a big role in their choice of equipment," explains Slim Tlili, Sales Manager. "At Sotradies we strive to provide all-round service that hinges on three key elements: advice, assistance and proximity. That's what keeps customers like 'Les Carrières de L'Ariana' coming back to us year after year when they need new equipment."

"That's true," adds Mr Djelassi. "In fact, we have been so happy with our wheel loaders that we also have four Case crawler excavators in our fleet - a Case Poclain 1033 and three B Series CX excavators, all of which have been performing flawlessly and reliably throughout the years."

Volvo articulated haulers: half a century of success

Volvo Construction Equipment is not just the leader in articulated haulers - it created the market in 1966. As the concept reaches its historic 50 year milestone, Volvo is still creating machines that go where others fear to tread

The 10 tonne payload DR631 heralded the birth of the articulated hauler

The articulated hauler concept is celebrating its 50th anniversary in 2016, marking five decades of transporting earth, gravel and a host of other materials over rough, muddy, slippery, steep or otherwise impassable terrain. And the company that commercially launched the concept in 1966 - Volvo Construction Equipment (Volvo CE) - is still the market leader. In 2016 Volvo CE continues to innovate with the launch of its H-Series range - which includes its biggest ever production articulated hauler - the 60 ton capacity A60H.

Swinging '60s sees genesis of the articulated hauler

1966 was the year that the Soviet's Luna 9 made the first rocket assisted landing on the moon, The Cultural Revolution began in China, England won the World Cup and the Rolling Stones were banned from 14 New York hotels. With so much going on it was easy to overlook the launch of the DR631, the birth of the articulated hauler. Essentially a development of an agricultural tractor (which Volvo then made) and a trailer, they were permanently joined via an articulating hitch, and the front axle of the tractor removed. Nicknamed 'Gravel Charlie', it may have had only a meagre 10 ton payload, but it set the stage for greater things to come. Surprisingly though, its popularity grew only slowly to start with, sales in the early years being confined to its home Swedish market.

One of the main reasons for the ongoing popularity of Volvo's haulers has been the consistent development of the concept. Only one year after its launch, in 1967, the company introduced the DR860, the first articulated hauler with a bogie, meaning that the material in the load body remains level and stable



(reducing spillage) while the wheels cope with very uneven road surfaces. The first hauler with a turbo-charged engine - the DR860T - arrived in 1970, and in 1979, things literally started to speed up, with the launch of the 5350. Capable of 50km/h, the 'Off-road Express' was able to maintain previously unheard of speeds, thanks to a suspended front axle and an automatic transmission. Traction was further increased with the addition of a six wheel drive system.

The A-Team arrives

The A20 was launched in 1986 with a 200 hp engine and a 20 ton payload. Things soon got a lot bigger in 1987 with the advent of the 35 ton abilities of the A35, which also featured a retarder built into the transmission to reduce wear on the service brakes.

A20 in 1986 had a 200 hp engine and a 20 ton payload

The range was given a major overhaul in 1993 with the introduction of the C-Series, which featured a low emission engine, fully automatic transmission and 100% differential locks. The 40 ton class hauler was launched in the mid-1990s, in the shape of the A40, pulled along by a mighty 400 hp engine and stopped by oil cooled wet disc brakes.

Bigger, stronger, tougher, more reliable, easier (and cheaper) to operate, safer for the environment and the operator - the D-Class of articulated haulers from Volvo CE were introduced in 2000 and continued to be far and away the best-selling hauler. Covering payload ranges of 24 to 37 tons, all D-series Volvo articulated haulers - models A25D, A25D 4x4, A30D, A35D and A40D - featured a comfortable cabin and no daily greasing. For the first time diagnostic electronics also alerted both operator and technician of problems before they became failures; thus increasing uptime.



D-Series featured modern design and Automatic Traction Control (ATC)

Developments such as Automatic Traction Control (ATC) once again set Volvo CE apart in the hauler market. ATC relieves the operator from manually operating differential locks and drive configurations (6X4 or 6X6) as driving conditions change. Multiple sensors constantly check the speed differences within the driveline and select the best drive combination for the conditions. This also reduces tyre wear, driveline stress and fuel consumption.

10 years ago the 50,000th hauler was commemorated with special 'Volvo blue' livery

Full suspension: another industry first

In 2007 Volvo CE decided to adopt a radical approach with the introduction of hydraulic suspension with automatic levelling and stability control on all wheels. This 'Full Suspension' variant provided excellent off road performance, allowing the hauler to travel at much higher speeds and increasing productivity. Even when fully loaded, the E Series haulers' ability to 'float' over rough ground without bouncing and rolling improved operator comfort and safety. These benefits increase with the length of haul road, effectively absorbing all rough spots and allowing operators to maintain considerably higher average speeds - with or without a load. A hauler traveling at 55 km/h over rough haul roads was now possible, with minimal bouncing rolling or shaking.

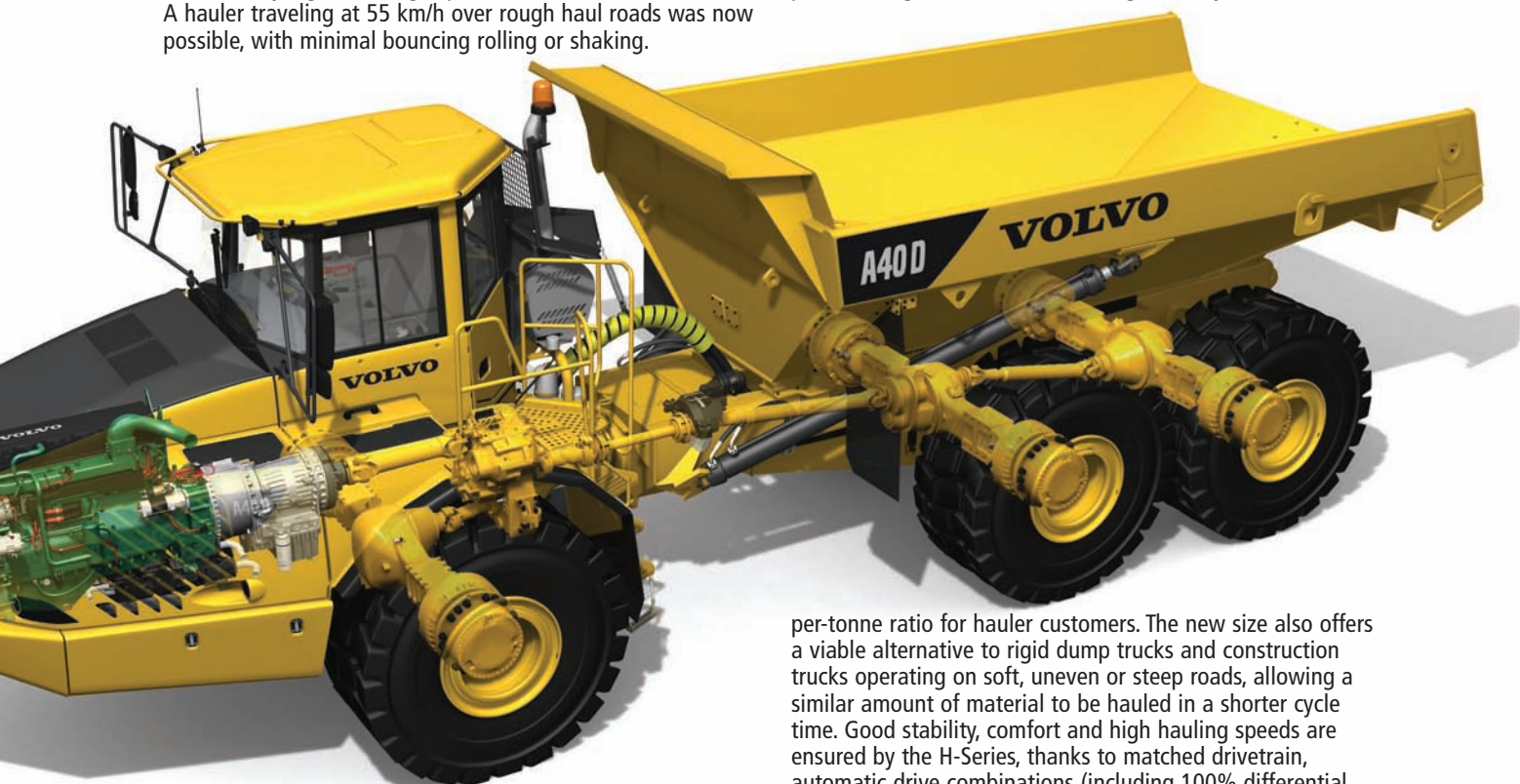
Final emissions regulations, but also offered new features designed to improve comfort and productivity. The proven concept of oil-cooled wet multiple-disc brakes on the A35 and A40 models was also introduced on the A25G and A30G, reducing maintenance costs and increasing uptime, even on muddy or dusty job sites.

The larger models in the range were also offered with Volvo's award-winning onboard weighing system, which allows for precise machine productivity monitoring, helping to optimize payload and minimize wear, tire damage and fuel consumption. The system monitors weight, relaying information to load software integrated into the machine's electronics. Indicator lights tell the hauler operator, as well as the operator of the loading unit, whether the hauler is at part or nominal load or whether it has been overloaded.

50 years young: the H-Series

The H Series, launched in 2016, is the culmination of 50 years of trusted Volvo engineering and innovation. Responding to a growing demand among customers for articulated haulers with larger payloads, the H-Series also welcomes the 60 ton (55-tonne) capacity Volvo A60H to the range - the largest articulated hauler of any brand to hit the market.

The Volvo A60H's higher payload - a 40% increase on Volvo's previous largest hauler the A40 - significantly lowers the cost-



F-Series: cleaner emissions, cleverer performance

2010 heralded the arrival of the F-Series, haulers that not only met the demanding standards set by the Tier 4i (US) and Stage IIIB (Europe) emissions legislation, but also featured a package of improvements in functionality, design, and maintenance.

The F-Series also saw the fitment of CareTrack as standard, Volvo's telematics system that enables remote monitoring of a wide range of machine functions (e.g. location, fuel consumption, service reminders etc.), optimizing customer operations.

Volvo Construction Equipment's articulated haulers took another confident step forward in 2014, with the launch of the G-Series, which not only met the stringent Stage IV/Tier 4

per-tonne ratio for hauler customers. The new size also offers a viable alternative to rigid dump trucks and construction trucks operating on soft, uneven or steep roads, allowing a similar amount of material to be hauled in a shorter cycle time. Good stability, comfort and high hauling speeds are ensured by the H-Series, thanks to matched drivetrain, automatic drive combinations (including 100% differential locks), all-terrain bogie, hydro-mechanical steering and active suspension.

Volvo remains the world's leading manufacturer of articulated haulers. It invented the concept in 1966 and has been developing and building these machines ever since. The story has come a long way since the original 10 tonne 'Gravel Charlie', but with proven success over the years, the H-Series continues the tradition of delivering innovative technology, reliability, comfort and quality - not to mention low cost of ownership.

The new Volvo A60H's higher payload of 60 tons significantly lowers the cost-per-tonne ratio for hauler customers.

The H-Series of articulated haulers from Volvo CE - life begins at 50.

For further information, visit www.volvce.com





RUD Chains Ltd Tyre Protection Chains Offer Maximum Traction & Resistance

- Reduce operating costs, decrease downtime & increase productivity
- Maximum traction & resistance due to robust chains three wear levels
- RUD chains help extend tyres life by a factor of ten
- Sideflex NEW Sidewall Protection device offers ultimate sidewall protection
- Wide range of TPC for Quarrying & bulk materials handling

www.rud.co.uk 01227 276611

RUD Chains Ltd, Units 10-14, John Wilson Business Park, Thanet Way, Whitstable, Kent, CT5 3QT

BULKEX



THE UK'S MATERIALS HANDLING EXHIBITION AND CONFERENCE



HARROGATE INTERNATIONAL CENTRE 5-6 OCTOBER 2016

COME AND EXHIBIT

Showcase your products and services to key decision makers across the bulk materials handling industry. New for 2016 is Speaker's Corner, bringing the programme of high profile speakers and presentations into the heart of the exhibition hall. Those wishing to make an extra impact can take advantage of a range of sponsorship opportunities to suit all budgets.

EXHIBITOR BENEFITS

Be a part of this high profile industry event:

- Company logo and profile in BULKEX16 exhibition brochure
- Promotion on a dedicated website
- Extensive media reach via online and offline marketing
- Targeted promotional campaign

To exhibit at the event or to find out more about sponsorship, contact the BULKEX events team on **01787 226995** or visit **www.mhea.co.uk/bulkex-16/**





Do you Value the Importance of Quality Tyre Protection Chains?

RUD's Tyre Protection Chains help extend a tyre's life by a factor of ten:

RUD have been producing and protecting tyres with their innovative Tyre Protection Chains for over 70 years, working alongside many heavy operators across industries such as quarrying, mining, and recycling.

Earthmovers working in harsh conditions in mines, quarries and other heavy industries constantly face damages to tyres, due to punctures and sidewall damage from haul road rock debris and accidental impact. Plant owners know the importance of

investing in top quality Tyre Protection Chains to reserve and maintain their valuable assets.

RUD's tyre protection chains use case hardened alloy chains linked in patented designs to provide a high level of tyre protection and traction qualities. The chains are typically used across fire and hot slag conditions, which can be very dangerous and lead to loss of equipment through burnt tyres.

RUD tyre protection chains offer three wear levels to provide a greater wear resistance on hot and burning surfaces. Sharp edges on the outer surface of the chain and multiple link designs help increase traction to suit a wide range of aggressive and low traction surfaces. The designs and benefits vary to each project and specific requirements.

One of RUD's latest innovation Sideflex: provides a cost effective solution to the problem of sidewall damage to expensive and valuable dumptruck tyres, for construction and mining equipment in particular earthmoving machines.

Sideflex is an easy to fit, lightweight shield which simply deflects rock and debris from the tyre wall. The device fits firmly within the wheel hub and almost brushes the ground preventing rock and debris from penetrating the tyre wall. Protective arms radiate from a central retaining ring and form a shield covering the sidewall.

RUD's Tyre Protection Chains are well known in the industry for their quality and reputation, by extending a tyre's life by a factor of ten. They help reduce operating costs; decrease downtime and most importantly increase overall productivity.

Reduce operating costs, decrease downtime & increase productivity with RUD Tyre Protection Chains.



www.hub-4.com/directory/743



Weir and Trio, the perfect fit.

Together, Weir and Trio complete the picture to form a portfolio of best-in-class sand and aggregate solutions. Already a leading manufacturer of crushing and separation equipment, Trio is now backed by Weir Minerals' commitment to superior material technologies to deliver better solutions – and lower your total ownership costs. Combine this with Weir Minerals' global service network, and it's just another reason why, whenever, wherever, we'll get the job done.

Find out more at weirandtrio.com

WARMAN®
LINATEX®

CAVEX®
ENDURON®

WEIR

TRIO

Minerals
weirminerals.com

**Bauma
2016**

Visit us at Bauma 2016
Hall B2, Stand 212

Copyright © 2015, Weir Minerals Europe Ltd. All rights reserved. TRIO and the TRIO logo are trademarks and/or registered trademarks of Trio Engineered Products, Inc. and Trio Engineered Products are trademarks and/or registered trademarks of Weir Minerals Australia Ltd and Weir Group African IP Ltd. CAVEX is a trademark and/or registered trademark of Weir Minerals Australia Ltd. LINATEX is a trademark and/or registered trademark of Linatex Ltd. ENDURON is a trademark and/or registered trademark of Weir Minerals Europe Ltd. The WEIR logo is a trademark and/or registered trademark of Weir Engineering Services Ltd.

GORDON MCLEOD PLANT HIRE

TAKE ON SIX NEW KOMATSU EXCAVATORS

Gordon McLeod Plant Hire take on 6 new Komatsu excavators with Miller PowerLatch Tilt couplers

Gordon McLeod Plant Hire and Marubeni Komatsu have been loyal to each other for 19 years. It's a relationship that stretches back to when Gordon McLeod Plant Hire took their first Komatsu PC210LC-6 from us, nearly 2 decades ago. Since then, the growth in their fleet has been exponential and they now have a huge number of Komatsu machines; ranging from an 8 tonne excavator to a 35 tonne tracked excavator. Not to mention the 22 tonne wheeled excavator they have in their ranks. They offer a premier service in operated plant hire and along with their excavators they have an array of HGV transport options in low loaders and 8 wheel fixed bed HIAB's.

Gordon McLeod Plant Hire have just purchased three new Komatsu PC210LCs and three new Komatsu PC138s as part of an ongoing machine refresh. They do this every 5 years in an effort to grow the company and continue their working relationships with a mixture of national and private clients. They've always been about consistency and reliability so it was important for Marubeni Komatsu to meet the criteria for selection in a way that was befitting a forward thinking company such as Gordon McLeod Plant Hire. Here's what they said:

"Our criteria was quite straight forward really; quality, reliability and the highest specification available. Marubeni Komatsu offered us the most advanced technology too."

We know how important it is to keep our Site Managers happy. So, not only does the criteria for selection have to be faultless, the features of the machine have to match up too. Both machines are built around the EU Stage IIIB compliant engine platform and Komatsu continues a long tradition of

uncompromising quality and total customer support, while renewing a commitment to safety and environmental protection. All their new machines come with a customer support package that helps keep them running and costs of ownership down. It's now standard on our EU Stage IIIB machines; you get your maintenance included and performed by Komatsu trained technicians with Komatsu genuine parts. Gordon McLeod Plant Hire had this to say:

"We preferred what Marubeni Komatsu had to offer over the competition because of the machines uptime, power, low fuel consumption, driver comfort and hydraulic controllability. There's also MKL Customer Support which we were impressed with!"

We look after our Operators too. Luckily, one of our favourite hitch suppliers Miller were on hand to attach their PowerLatch Tilt coupler; which builds on the proven Miller TwinLock design. Miller are able to give Operators peace of mind with their ABS mechanical backup system, which ensures safety in the unlikely event of loss of engagement forces. Operators will also get 180° tilt functionality, of which the benefits are plainly obvious; enhanced performance and improved productivity. When asked about the features that were most impressive to potential Operators, Gordon McLeod Plant Hire said this:

"The machines have great balance, power and controllability. There's also an air of smoothness and quietness when the machine is working. The regenerating simplicity is also a highlight!"

As far as relationships go, Marubeni Komatsu and Gordon McLeod Plant Hire's couldn't be stronger right now. We look forward to catching up with them soon.



www.hub-4.com/directory/537

Liebherr extends its crawler tractor generation 6 downwards - model premiere of the PR 726

- **Pushing performance at highest level due to proactive performance adaptation**
- **Cost Effective and efficient due to hydrostatic drive and selectable ECO mode**
- **Modern comfort cab with completely redeveloped operator station**
- **Designed for 2D and 3D machine controls of renowned manufacturers**

Liebherr extends its generation 6 crawler tractor series to include the PR 726 Litronic.

The series now totals four models with operating weights of approximately 16 tonnes to 41 tonnes, which comply with the emissions standards of Stage IV / Tier 4f.

The design of the new Liebherr PR 726 crawler tractor offers outstanding visibility from all sides.

The new Liebherr PR 726 crawler tractor will have its world debut in September at the NordBau building industry trade fair in Neumünster. The model is the successor to the successful PR 724. The official start of sales will be early 2016.

The new Liebherr PR 726 Litronic crawler tractor offers an operating weight of 16,000 kg to 19,800 kg and its Liebherr diesel engine returns 120 kW / 163 HP.

The PR 726 is powered by a 4-cylinder Liebherr diesel engine that complies with the Stage IV / Tier 4f emissions standard. In order for the requisite emissions and consumption targets to be achieved, the entire combustion process has been optimised to reduce the particulates, even within the engine, to a minimum.

To simplify the system and to optimise exhaust gas treatment, Liebherr relies on selective catalytic reduction (SCR) technology for the PR 726. This makes the use of a diesel particulate filter unnecessary and thereby simplifies maintenance for the customer. The highly efficient combustion process facilitates low fuel consumption.

The optimised adaptation of the engine parameters to changing operating conditions is supported in a number of ways including an in-house-developed common rail injection system incorporating an in-house-developed electronic engine management system.

The main components of the generation 6 crawler tractors come from Liebherr's own production line and are therefore optimally tailored to the machine. Among these components are the diesel engine and the common rail injection system as well as the electronic components and various hydraulic components. Here, Liebherr can draw on over 50 years of experience in the development of crawler tractors.

Highest performance and operating efficiency

As with all generation 6 tractors, the new PR 726 Litronic also features an electronically-controlled drive management system with integrated ECO function. This makes it possible for the operator to select between high performance and maximum economy. The ECO control system here enables even greater travel drive efficiency in light to medium-duty operations.



The proactive power control is another 6th generation innovation. This involves the detection of various machine parameters and if required results in an automatic increase of the engine output. As well as responding more rapidly, the machines offer a tangible increase in pushing performance and dynamic response.

This hydrostatic drive keeps the engine speed at a constant level. All drive train components and the intelligent Liebherr engine management are optimally adapted to this speed, which makes a significant contribution to reduced fuel consumption.

The combined inching brake pedal facilitates the transition from conventionally driven machines to Liebherr generation 6 crawler tractors. With this equipment option, both the travel speed and the brake can be controlled via the foot pedal. A key enhancement is the 3-stage joystick (which can be locked in forward, stop and reverse), which is also available as an option.

The PR 726 offers exceptional smooth running and perfect crawling properties. Long-running gear systems, an effective balance and optimal visibility are superior features for precise levelling, irrespective of whether this is done manually or using automatic grading systems.

The PR 726 offers exceptional smooth running and perfect fine grading properties. Long undercarriages, an effective balance and best visibility are prerequisites for precise finish grading, irrespective of whether this is done manually or using automatic grading systems.

Plug-and-play: easy installation of machine control units

For simple and trouble-free implementation of automatic machine control units, Liebherr also offers factory-fitted preparation kits for generation 6 crawler tractors, which are available for the systems of well-known manufacturers such as Trimble, Topcon or Leica.



Whether the machine operator opts for a 2D or 3D control system for the intended deployment, both laser and GPS systems or controls with total station can be used without problem on the same machine. This makes the installation easier and offers the owner the highest level of flexibility in the selection of their system.



If required by the project conditions, an individual machine control system can be used consecutively on different Liebherr crawler tractors that are factory prepared resulting in considerably lower investment costs for the operator.

Liebherr works intensively with the manufacturers of control systems both in the area of development and after sales and thereby ensures that the user always receives the best service from their chosen supplier.

Equipment for any application

The new PR 726 Litronic's performance is made complete through its comprehensive range of equipment. This starts at the front with a universal 6-way blade, with folding corners as an option for easy transport, extending through to a straight blade and semi-U blade for moving larger quantities of material. To further simplify machine transportation, a semi-U blade with an overall width of 3 metres for a track width of up to 610 mm is also available.

At the rear, 3-shank and 5-shank rippers can be chosen as well as, for example, a hydraulic rope winch, counterweight or drawbar.

Based on the extensive experience of material handling operations that Liebherr has gained with its large dozers, the new PR 726 Litronic can also be configured for industrial applications such as handling of coal or wood chippings.

The new PR 726 will also be offered in a special dozer version for landfill sites, adding to the extensive range of Liebherr machines for this target group. Special equipment features make this model the ideal system solution for this

challenging field of application and include, for example, a pressurized cab, special seals in the cab and engine area, protective devices and covers, optional reversible fans and special landfill blades with trash tracks or striker bars.

Modern design and comfortable new cab

The modern design of the new generation 6 crawler tractors, with sloping edges on all sides and panoramic windows, offers the operator an optimum all-round view of the terrain as well as the blade and rear ripper. The view over the engine hood is completely clear as the exhaust stack and lifting cylinders have been positioned behind the A-posts. A good all-round view enhances efficiency and improves safety.

Numerous innovations in the cab area of the larger generation 6 machines have now filtered down into the compact class. The travel and operation joysticks make ergonomically safe handling possible thanks to the new T-shape. The required travelling speed range can be preselected directly on the joystick enabling control of the tractor to be selected precisely, especially at low speed. Driver detection takes place automatically by means of the integrated seat contact switch without a safety lever having to be activated.

The touch-sensitive system display for Liebherr earthmoving machines is also featured on the new PR 726 Litronic. This enables important operating parameters, such as the ECO function or the travel drive response and steering, to be adjusted intuitively and with a clear overview.

For optimum illumination of the working area, halogen headlights or high-performance LEDs are used depending on the chosen equipment level.

Easy maintenance, low operating costs, optimum planning reliability

Centralised servicing points, wide opening access flaps and engine compartment doors, an operator cab that tilts as standard and fans that fold out for cleaning (optional) facilitate perfect service access and simplify the maintenance process.

Depending on the application, and provided that regular quality checks are performed, the hydraulic fluid change interval can be as long as 8,000 hours of operation. Compared with the previous model, the maintenance intervals of the diesel engine in the PR 726 have been doubled to 2,000

operating hours, which overall results in reduced operating costs.

The PR 726 Litronic's undercarriage is a completely new development. The segmented sprocket has a larger diameter with more teeth so that the operating life of the bushings and sprockets is extended. The Liebherr FTB undercarriage is also available as an option for the PR 726. This swivel undercarriage with rotating bushings, exclusively developed for Liebherr, is particularly well-suited for work on soft, abrasive ground and considerably extends the service life in sand, for example. If used in areas with impact loads, such as on stones and rocks, the trusted lubricated-for-life tracks are the ideal solution. Both undercarriage versions can be retro-fitted retroactively.

As with all previous generation 6 models, the PR 726 features a 3 year / 5,000 hr warranty on the whole drivetrain as standard and without charge. In addition, Liebherr offers special guarantees as well as tailored inspection and service programmes. This enables maintenance checks to be optimally scheduled giving customers reassurance across the whole service life of the machine.

Information about all machine data anywhere, at any time

LiDAT, the data transfer and positioning system from Liebherr, supplies information, for example, machine location, operating and utilisation times, fuel consumption as well as service interval information. This gives the fleet operator the ability to schedule service and maintenance more effectively.

Technicians can be sent out and spare parts planned more optimally. As such a significant cost saving can be achieved while, at the same time, improving machine availability. LiDAT data can also be used to calculate hire rates.

The LiDAT data can be accessed via GPRS or data carrier. As just a web browser is required to use LiDAT, information can be made readily available on a variety of end-user devices.

Additional security is offered by an automatic alarm function, which can be set up for particularly important information, for example, notification of critical operating conditions or a machine leaving a predetermined zone or being operated outside authorised hours.



www.hub-4.com/directory/504

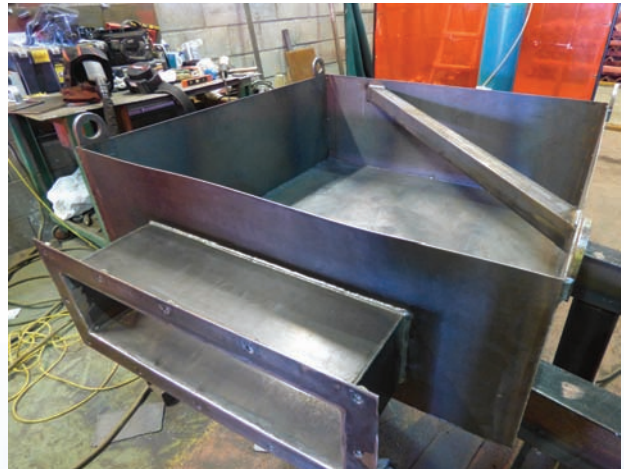
Wheelwash delivers a full solution to Thyssenkrupp steel production plant in Rio de Janeiro, Brazil

Wheelwash was approached by Thyssenkrupp to deliver a total wheel washing solution to their new steel making operation in Rio de Janeiro, Brazil. After completing the full tender process along with 10 other companies, Wheelwash were successfully chosen to fulfil the order. Wheelwash were then given a 42 day window to design, manufacture, test and ship the completed solution out to Brazil for final installation by the Wheelwash technical team. This process also involved an on-site factory acceptance test at the Wheelwash factory by members of the Thyssenkrupp team to check quality and certification, along with observing the electrical testing of the products using a specially configured generator.

We caught up with Carol Godfrey, UK General Manager for Wheelwash at their manufacturing facility in Crewe "This solution for Thyssenkrupp is made up of three standard Rhino Ecowash Excels and one larger Rhino Ecowash Extra system for washing heavier, over-sized vehicles. The three Rhino Ecowash Excel systems feature 3m entry and exit ramps with a 4m wash platform and a 5.8m water recycling tank. There is a main control panel, a powerful wash pump, one recovery pump, and a vehicle sensor. This sensor works on a timer, activating the timed wash when the vehicle passes it. Once the wash cycle is completed, the water is recovered and recycled through the settlement tank."

"The Ecowash Extra has a 6m wash platform, a recycling tank, a header tank, two sensors and a much larger inverter driven main wash pump. This enables the power of the wash spray to be adjustable which brings with it many benefits. One of the other interesting things about this project is that being a steelworks, the site can generate their own power. Consequently, we were challenged to ensure all the units run off their 440v/60 hz power supply, which is a big departure from our standard product offering. Our wheel washing systems are designed with ease of cleaning and maintenance in mind, so our recovery pumps are housed external to the wash platform. To make shipment easier, we manufacture the wash platforms in two halves and then assemble and seal them together on-site. Our team always go to the client's site to do the final install, testing and commissioning."

"The internal grids that the vehicles drive over are made from reinforced steel angle to aid muck removal. They are removable to assist with cleaning. We have galvanized these and other various parts of the units for some of our



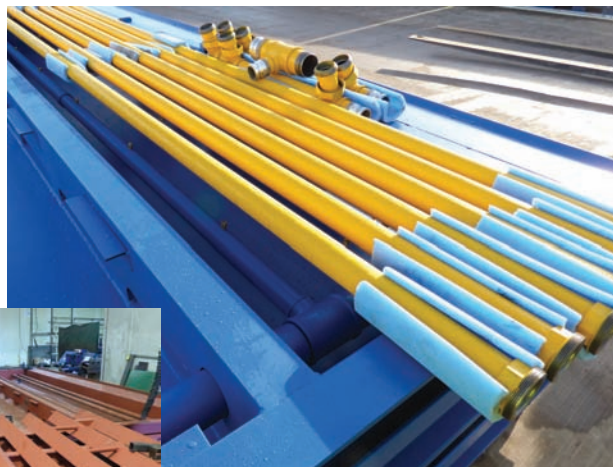
customers. The wash platform is supplied with internal pipework consisting of four spray bars which target the tyre treads and vehicle underbody. We have a dedicated wash down spray bar which flushes the base clear, moving all the water and dirt to the sump, keeping the unit as clean as possible. The recovery pump then takes all the dirt and used water away for recycling."

"We have our own on-site paint shop to keep the quality of finish consistently very high. It also means that we can paint any of our products in the clients' preferred choice of colours if required. We always send a spares pack of mechanical and electrical components as well as a very detailed operating manual for the client, making sure that they are fully supported."



wheelwash.co

Venda - Aluguel - Se



Alison Galley, UK Sales Manager also commented "Our Ecowash Extra system also has the inverter meaning that power consumption is kept to a minimum. It only draws the maximum operating current that the pump needs to work rather than spiking at start-up. This means that we are not wasting customers power or water. This inverter system also allows us to control the flow rate of the wash, so in harsh winter months it can be run at full capacity to get rid of all the dirt and debris, but in the less demanding spring and summer periods, the flow rate can be reduced to save power and water. This can equate to a massive cost saving through the year."

The Rhino Ecowash® Extra is an automatically activated drive through spray wash system designed to prevent the spread of site dirt and debris on to public highways. Like many systems in the Rhino Ecowash® range, it is powered by inverter-driven pumps to provide up to 50% operational cost savings, unrivalled reliability and total flexibility of wash pressure. This closed loop system also effectively recycles the water it uses. The Rhino Ecowash® Extra comprises a robust 6m wash platform, optional 3m ramps and water recycling tanks totalling 36,000 litres capacity. All items are made from heavy duty steel. The system is supplied with quality pumps and controls housed in a lockable kiosk.

The newly-improved wash platform benefits from 10 strategically positioned water delivery pipes that deliver

narrow fans of spray up to 4.2 bar to a targeted location on each tyre. The staggered positioning of the nozzles ensures the whole tyre is cleaned without the occurrence of striping. The standard spray pattern is

configured to minimise overspray and high side screens come as standard to ensure wash water is deflected back into the wash platform. The wash operates with on-off sensors ensuring water is only sprayed when a vehicle is present in the wash platform.

A unique compact side sump, removable grids and improved wash down pipework make it the easiest system available to clean and maintain. Removable guide rails are supplied in sections for easy replacement in the unlikely event of damage. The water recycling tank is divided into three sections by baffle and weir plates to aid particulate settlement and water quality. Each chamber is fitted with valves for easy sludge removal. A high capacity header tank is supplied to ensure there is always sufficient clean water for use on demand. A mechanical ball valve enables automatic top-up from a mains water supply, when required. This system is supplied with a hand lance as standard for additional, mobile washing.

As well as a large range of equipment solutions, Wheelwash also operate the largest fleet of rental wheelwash units across the UK. For more information: please visit www.wheelwash.com or call +44 (0)1270 214886.



www.hub-4.com/directory/900



HERE, THERE & EVERYWHERE

WHEREVER YOU ARE EXHIBITING THIS YEAR...

**Bauma
2016**

**Hillhead
2016**

**RWM
2016**

**MINExpo
2016**

**AND
BEYOND...**

TSP SHOWBUSINESS CAN HELP YOU SHOW OFF!

- ✓ Exhibition Stand Design & Construction
- ✓ Roadshow Organisation & Management
- ✓ Graphic Panel Design & Production
- ✓ Corporate Events & Promotions
- ✓ PR & Marketing Support
- ✓ Mobile Exhibition Units
- ✓ ShowStructures
- ✓ ShowTents



WHAT YOU SAY ABOUT US...

TSP ShowBusiness has been working with us on the Hillhead Show for more years than either of us care to remember.

Over this time Tim and Jack have developed a detailed and practical understanding of how the show works through having experienced almost every build/breakdown challenge that can be encountered on an outdoor exhibition site!

This knowledge of the special nature of the site means that, as organisers, we have every confidence in their ability to get their stands built both in a safe and professional manner and we are happy to recommend them as one of our preferred suppliers.



**The Hillhead
Management Team**

CALL US ON: +44 1924 271500

OR EMAIL: info@tspshowbusiness.com

FOR A CHAT ABOUT YOUR NEEDS



Investing in troubled times



Chris Cox, JCB's General Manager for the Waste & Recycling Sector, looks at how economic uncertainty can affect the industry and how the machine manufacturer faces up to economic downturns.

While plummeting crude oil prices have their advantages for many people, the complex effects a low oil price has on the economy - affecting everything from plastic production to pensions - means that it's not all good news for those involved in waste and recycling, many of whom are seeing the value of their materials undercut by cheap oil.

Crude oil prices declined to a seven-year low at the end of 2015, with US crude trading near to \$30 / bl, and prices have gone lower still since the beginning of 2016. Increased production in the Middle East to counter the USA's production of shale oil, the release of post-sanction Iranian oil, and a lower than expected demand from China have all contributed to the depressed prices. The oil price isn't the only factor driving economic uncertainty, but it is so central to our economy that it affects almost every aspect of our lives.

Investment uncertainty

In the short term lower crude oil prices can be good news for machine owners and operators as running costs and overheads are markedly reduced. In the longer term though, there is no doubt that any economic uncertainty can inhibit investment and affect trading conditions. For example, analysts predicted a boom in the US steel industry on the back of the success of shale and the expected expansion of operations, but that hasn't materialised and investors are understandably nervous about future ventures.

Less investment and changing commodity prices can have a real impact on waste management businesses. A low oil price means it is cheaper to produce new plastic than recycle existing material so there is an inevitability about the direction buyers will choose to go, unless the wider picture is taken on board and our environmental responsibilities acknowledged.

Weather the storm

To be a successful business you have to be able to weather the many storms that come with economic cycles and maintain, or where possible grow, your market share even in the tough times. JCB has always continued to invest in new products and innovate with new technology whatever the economic outlook, so that it can be ready for the inevitable market upturns.

JCB, founded by Joseph Cyril Bamford, was established just after the Second World War - using surplus military supplies such as air-raid shelters and turning them into agricultural tipping trailers - so the company knows a great deal about making the best of a situation and has seen its fair share of economic cycles over the past 70 years.



Better resource management a certainty

Having now worked in the waste and recycling industry for over 30 years, JCB has invested heavily and developed its Wastemaster machines - the widest range of machines for the industry - because it believes that this sector will continue to grow in size and importance over the coming years.

We need to manage our resources more effectively with a growing population, dwindling natural resources and less space available for landfill. A successful circular economy is a must; no matter what economic uncertainties there may be. It is central to the way resources are managed in the future and JCB plans to play its part in that movement.

www.jcb.com



www.hub-4.com/directory/458

TRIO®

TRIO® Engineered Products offers world class design, engineering and manufacturing to provide high value solutions for your crushing, screening, washing and material handling requirements.

We strive to provide the most rugged, robust, and reliable equipment for the most demanding applications. We provide customised high value solutions, from single machines to stationary or portable plants, including turnkey projects.



Our product line includes an extensive array of vibrating, crushing, screening, washing, electrical control centres and material handling equipment. We also provide a broad range of conveyor components for replacement parts and new OEM manufacturing. In addition, we are the leading solution provider for modular plants and customised portable plants in the industry.

WARMAN® WRR®

The Warman® WRR® pump combines a simple design using few components with thick walled castings, a recessed impeller and vortex technology to provide unequalled strength and reliability. Materials are selected to suit specific applications. Weir Minerals markets Warman® WRR® pumps solely in Europe, North Africa and Kazakhstan.



13-14 July
2016

Supported by



The Complete Auto Recycling and Secondary Materials (CARS) trade show is Europe's leading event dedicated to auto recyclers and material processors.



25+

Countries have
representatives visiting

95+



Exhibitors showcasing
the latest equipment



2k

Industry professionals
under one roof

Register for your free ticket: www.cars-expo.com

CARS 2016 will take place at Donington Park Circuit, Derby, United Kingdom

Zen Robotics announced as headline speakers at this Year's W.A.S.T.E.'16



Zen Robotics, the leading supplier of robotic waste separation technology have been announced as headline speakers at this year's W.A.S.T.E.'16.

The Finnish company will come to the UK to deliver a presentation on the role and development of robotics and related technologies within the industry.

The robots will be on display and representatives will be there to talk to delegates about the rise of artificial intelligence in expert waste systems.

With just 12 weeks to go, this year's event will be held at the AJ Bell Stadium on June 9th and will bring together exhibitors, local authorities and industry innovators for what is now referred to as THE waste show of the year.

The Waste And Skip Trade Exhibition, now in its third year promises to be bigger and better than before with more stands, seminar topics and the very first social media presentation specifically for the waste, skip and recycling industries.

After the phenomenal success of last year's show, organiser Debbie Higham decided on a different theme to run alongside the day's running order, "After visiting Eindhoven last year and seeing the robots working at a wood recycling plant, I decided there and then that exhibitors and guests at W.A.S.T.E.'16 would benefit from seeing how these robots and artificial intelligence are making considerable changes to the industry.

"Working with waste companies on a daily basis, it is clear to me, that the industry is going through a transition period.

"As a show that prides itself on highlighting innovation, if we can show our visitors and guests something different, then we will have delivered what we set out to do - educate and inform.



"After last year's event and the amount of positive feedback from exhibitors and visitors, it was a no-brainer to plan another event for 2016.

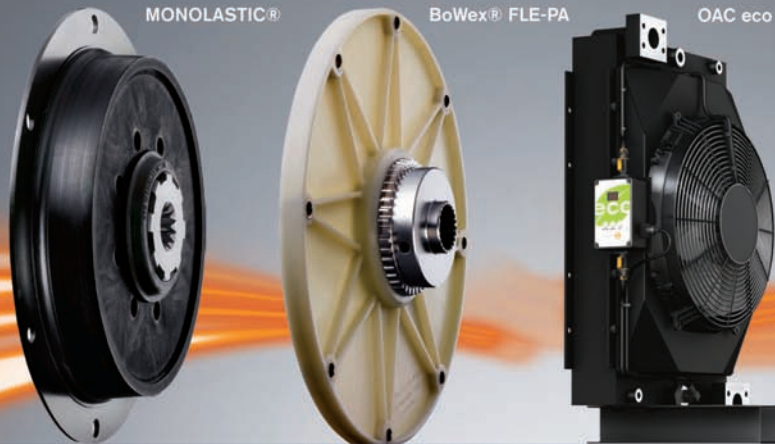
However, we wanted to deliver something with a bit of a twist, and we are delighted that Zen Robotics have agreed to come to the UK to show us their engineering and technology."

Zen Robotics, CEO Timo Taalas commented, "The international reaction to our Zen Robotics' sorting technology has been phenomenal and we are looking forward to WASTE '16 and the opportunity to share these developments with our industry colleagues in the United Kingdom."

It is free to visit WASTE '16.

Register here: www.wastexpo.co.uk/visitors

ZENROBOTICS®



Diesel Hydraulic Solutions

KTR manufacture high quality flexible shaft-to-shaft and flywheel couplings for diesel engine and hydraulic pump connections: standard and bespoke flanges and housings available for SAE standard and non-standard dimensions. KTR also manufacture a range of oil/air blast coolers and hydraulic power pack components. .

www.ktr.com



MASTER MAGNETS LTD

INCORPORATING METAL DETECTION LTD

BURNT MEADOW ROAD, NORTH MOONS MOAT, REDDITCH, WORCS B98 9PA



TEL: +44 (0)1527 65858 FAX: +44 (0)1527 65868 EMAIL: info@mastermagnets.co.uk

www.mastermagnets.com

www.metaldetection.co.uk

Discover the Latest Innovations at CARS & the Metals Recycling Event!

Over 2000 visitors will descend on Donington Park Race Circuit in Derbyshire on 13 & 14 July 2016 to learn, share and ultimately find solutions to reduce their costs, increase efficiency and widen those all-important margins.

Held biennially, CARS (Complete Auto Recycling & Secondary Materials) is Europe's leading event for the auto recycling sector and MRE is the first of its kind in Europe - an event where metals recycling takes centre stage.

Amongst all of the features you would expect to find at a typical trade show, including an international conference programme, skills lab and indoor exhibition, a key feature of the two shows is the outdoor live demonstration area.

Visitors get to see equipment in a working environment enabling them to make informed decisions about which products are best suited to their operations. With equipment from Hammell, Powerhand Attachments and E.H Hassell & Sons being demonstrated in a working line, and indoor exhibitors including Blue Fuchs, ZB Group, WBG and McIntyre, the two shows stand out as the leading events in Europe for their respective sectors.

There's no two ways about it, the current state of the metals market is making life difficult for scrap merchants and those connected with the sector but it's crucial to remember that it's not going to remain this way forever and savvy operators know that CARS & MRE are an opportunity to futureproof and come out the other end stronger.

The international conference programme features a line-up of expert speakers including Jaguar Land Rover, Novelis, Anbakam Metals and UK Steel. CARS & MRE provide the chance for attendees to see pioneering technology in a working environment, be able to network with the industry's finest and what's more, the events are both FREE to attend.

If you're in the business of turning metals or vehicles back into products or materials then CARS & MRE is the must attend event of the year.

To register for a FREE ticket or book at stand visit either www.cars-expo.com or www.metalsrecyclingevent.com, call 0207 633 4518 or email info@cars-expo.com





WORSLEY PLANT

LEHNHOFF VARIOLOCK FULLY AUTOMATIC QUICKCOUPLER SYSTEM

Changing any attachment is effortless, safe and fast

- Change large hydraulic attachments without changing hoses
- Save time changing between hydraulic attachments
- No need to leave cab (more safety and comfort for the operator)
- No possibility of oil spills while changing hoses
- Reduced possibility of dirt entering the hydraulic system

from grab to shear in just 15 secs



EASY CLEANING ● EASY SERVICE ● MAXIMUM OIL FLOW



THE ATTACHMENT SPECIALIST

SEPARATION/CRUSHING/MIXING/WASHING/SCREENING/RECYCLING/DEMOLITION

01606 83 55 44
www.worsleyplant.co.uk





Worsley Plant Expand with the grand opening of their New Southern Depot

Expansion for Worsley Plant is in full swing currently. Brian Carroll has recently been appointed General Manager Southern to head up the brand new Worsley Plant depot based in Witham, Essex. Brian's most recent role was as General Manager at Kocurek Excavators in Ipswich, which made him the ideal candidate to help Worsley Plant grow their presence in the demolition, construction and recycling markets in the South of the UK. This expansion means that all southern based clients will now be serviced fully from Witham, allowing for a faster service and quicker product, parts and spares dispatch. The facility is ideally located close to the M25 and so provides a highly effective base for the South of the UK.

Brian commented: "I was very impressed with how I saw the company being run and the team ethic was clear straight away. I am very excited about the role and the opportunity. I am looking forward to setting it up, generating sales and being part of the Worsley team. I truly believe that the potential is huge and that if we can be successful in London then it will be massive for Worsley Plant."

We also spoke with Sean Heron, Managing Director of Worsley Plant "Now in its 20th year, Worsley Plant has seen good organic growth over the last few years, and is now looking to increase its team across both its Middlewich and Witham depots from 18 up to 24 and will be taking on new sales people, parts and spares managers and service engineers to enable smooth development of the business. 2015 saw a turnover of £5m for us and by 2017 will be at around the £7m mark."

"Both Rotar and REMU have been unbelievable product ranges for us, right at the top end of the market, and we will see big percentage growth next year. Lehnhoff also is a key brand for us, and in two years we have seen huge growth with their product range in the UK. Our core product is MB who provide Crushing and Screening Buckets. We've been with them as dealers since 2004, making us the longest established worldwide dealer. This year sees us taking possession of the biggest crusher bucket in the UK from MB,



which we will have on display at Hillhead in June. This 8 tonne crusher bucket attaches to a 50 tonne machine and we have great hopes for this piece of kit."

"We are all about quality and we want to work on getting bigger market share across the brands that we represent, we don't want to be badge collectors and increase brands just for the sake of it, but want to concentrate on these niche brands to provide high quality products coupled with excellent service."

"Currently we have over 400 customers across the UK and we see this growing steadily over the coming years. It's all about our people, and we have some great staff. With people like Brian Carroll on board, I have complete faith in my team in driving the business forward."

For more information please visit www.worsleyplant.co.uk



EVENT ORGANISER



THURSDAY 9TH OF JUNE 2016, AJ BELL STADIUM, SALFORD

REGISTRATION NOW OPEN!



HEADLINE SPONSOR



SEMINAR SPONSOR



MARQUEE SPONSOR



LANDYARD SPONSOR



MEDIA PARTNER



MEDIA PARTNER

BOOK THE DATE NOW!
www.wastexpo.co.uk



QUICK TOOL CHANGING

EC-Oil allows you to automatically and effortlessly change hydraulic attachments such as breakers, grabs and tree shears without getting out of the cab.

Q-SAFE™

THE WORLD'S SAFEST QUICK HITCH

The Engcon tiltrotator allows your excavator bucket (or any other attachment) to rotate 360° and tilt 45° - enabling you to do jobs you simply couldn't do before. Rotating the bucket makes tasks like backfilling and offset digging quick and easy. Tilting allows grading to be carried out precisely and in tight spaces.

Three safety locks, visible and audible warnings and the option to disable boom and slew functions on the excavator when the hitch is open make Q-Safe the world's safest quick hitch. Simply, it enforces the manufacturer's safety directives.

www.engcon.com | uk@engcon.com | Phone 01684 297168

engcon®

Safety and efficiency with Engcon's Q-Safe Quick Coupler for excavators.

Changing excavator tools and attachments is quick, simple and safe with Engcon's Q-Safe, an S-type quick coupler with high flow hydraulic connection. As well as reducing downtime when switching tools, Q-Safe has a triple safety system to prevent accidents and costly delays caused, for example, by incorrect tool connection or a tool coming loose during operation. In fact, Engcon claims excavator owners/operators can recoup their investment in a Q-Safe system in a matter of months by maximising operational efficiency and safety on site.

With an S-type coupler like Q-Safe, all the digging forces are distributed through the coupler frame, regardless of angle and rotation of bucket, and not through the locking mechanism as with the conventional UK pin-grab type couplers. Additionally, the build height of an S-type coupler is much lower (around half) and it weighs much less than alternative coupler systems, resulting in potential cost savings for owner/operators.

The development of Q-Safe reflects Engcon's belief that profitability goes hand-in-hand with a safe workplace. Products like Q-Safe are specifically designed to meet or even exceed site safety standards and to reduce the risk of injuries and/or project delays due to misuse of equipment. For example, with Q-Safe fitted to an excavator the bucket or tool must have ground contact that exerts a given pressure before it can be removed, which means attachments cannot be detached whilst suspended in the air. Also, unlike some manufacturers' coupling devices, Q-Safe will not allow tool connection or removal unless the quick hitch coupler is fully locked on both axes. In the event of incorrect connection audible and visual warning signals are activated. The system also provides the option of limiting the boom and dipper function when the hitch is in an unsafe condition.

Q-Safe is available for all excavators in the 6 - 32 ton weight class and is part of a total solution for Engcon's new generation of tiltrotators which let the operator twist, tilt or rotate the excavator's bucket (or any other attachment) for maximum machine utilisation. Q-Safe is factory-prepared for use with Engcon's newly upgraded EC-Oil which enhances safety and efficiency even further by enabling automatic hydraulic and electrical connection of hydraulic tools and attachments. Designed for even the most demanding site conditions, EC-Oil has no visible hoses or electrical cables and tool and attachment changes can be made quickly and safely directly from the cab.

Engcon's commitment to the UK market is second to none, the company has recently made a significant investment in establishing a sales, service and spares operation in Tewksbury, boasting an expert team of 5. It is the only tiltrotator manufacturer to offer such a comprehensive UK service.



VULCAN BURNERS

Efficient Green Performance

- Proven fuel costs & emission reduction
- Raising the standard in asphalt production
- The new burner range from Asphalt Burner Services Ltd

Asphalt Burner Services

Unit 3B, Loves Hill, Castledawson, Magherafelt
Northern Ireland, United Kingdom, BT45 8DP

T: 084 5519 3033 Int T: +44 28 9095 0007

E: sales@vulcanburners.com

www.vulcanburners.com



TEE HAS YOU COVERED

MOBILE EQUIPMENT FOR EVERY APPLICATION



LEARN MORE AT:

www.terex.com/environmental-equipment



Mobile Access Towers: finding relevant training at the right level



With an ever-expanding variety of towers available for a diverse range of purposes, ensuring that your staff receive relevant training on how to use them is more important than ever. Raising awareness of the specific risks and equipping tower users with the relevant skills and knowledge to work at height is a vital step towards a safer workplace. But the right training doesn't just benefit your staff, it benefits you, and your business as a whole.

Aside from providing piece of mind, practical benefits and legal compliance, well trained staff actively contribute towards your bottom line. Don't underestimate the financial gains to be made by developing a safe, efficient workforce. If they can get the job done safely and in good time, you can avoid costly accidents and disruptions and save thousands in damage repair bills, compensation claims and - perhaps most invaluable - preserve your company's reputation.

PASMA accredited training

So how do you make sure you get the right training for your tower users? A good start is to look for a course accredited by the Prefabricated Access Suppliers and Manufacturers Association (PASMA), who provide the industry standard training scheme for Mobile Access Towers. Courses are only available from registered training providers, meaning that anyone offering PASMA accredited training meets their high standards.

PASMA have developed a full range of courses on all types of mobile access towers, be they full size, low level or even used on stairs. Each course covers tower components and key principles specific to the equipment type, alongside relevant best practice guidance. Delegates are trained in safe assembly and dismantling, tower stability, inspection and common hazards associated with their type of tower.

Not sure which course you need?

We've put together a quick and easy reference guide to finding the right access tower training course...

Top tip: On-site training

You can further ensure training is kept relevant and beneficial to your delegates by holding courses at your own site. By training in their own working environment, we've found that delegates are put at ease faster and instructors are able to ensure training is more applicable to their everyday roles, applications and site procedures. Training companies like Mentor can arrange for their instructors to come to you to carry out training, rather than you having to organise for delegates to attend an off-site facility, and even save you money in the process.

For further guidance on choosing the right training for your tower users, call Mentor on 01246 555222 or visit www.mentortraining.co.uk.



<p>For those who need to use full size mobile scaffold towers...</p> <p>Towers for Users</p> <p>PASMA's flagship course covers the fundamentals of assembling, moving, using and dismantling full size mobile access towers, and includes both 3T ('through the trap') and AGR (Advanced Guard Rail) tower systems.</p>	<p>For those who use low level access towers...</p> <p>Low Level Access</p> <p>The low level course covers best practice for the safe use of low level tower units and folding steps under 2.5m.</p> <p>Combined Towers & Low Level</p> <p>For those who use both low level and full size towers, the combined course offers Towers for Users and Low Level training in one condensed training day, delivered to a smaller group of delegates.</p>
<p>For those required to work on stairs...</p> <p>Towers on Stairs</p> <p>Developed for those who need to access areas positioned over stairs, Towers on Stairs provides specific guidance on the use of stepped access towers and the hazards associated with working at height in this challenging environment.</p>	<p>For those who work from assembled platforms...</p> <p>Work at Height Essentials</p> <p>The Work at Height Essentials course is designed for those required to work from the platform of a tower but not responsible for its assembly/moving/dismantling, providing delegates only the relevant fundamentals they require to work safely at height.</p>
<p>And for those who oversee the use of towers...</p> <p>Towers for Managers</p> <p>This course provides those responsible for overseeing the use of mobile access towers, with the skills and knowledge required to ensure towers are used safely and in line with relevant legislation and best practice.</p>	

COME TO THE HOME OF CRUSHING & SCREENING

IRELAND'S CONSTRUCTION & QUARRY MACHINERY
SHOW WITH OVER 200 EXHIBITION STANDS

21-22 APRIL 2017

Factory visits after the show.
Ireland is one of Europe's most exciting
countries to visit. Why not stay longer, come
to the show and our factory visits and then
enjoy this stunning country and everything
that Ireland has to offer. Only 1 hour's
motorway drive from Dublin Airport
to Molloy's quarry, Tullamore, offers a great choice of high
quality accommodation



CQMS'17

April 21st - 22nd 2017
Molloy's Quarry, Tullamore, Co. Offaly, Ireland

For more information contact Brian Coogan:
Email: brian@machinerymovers.ie Tel: +353 8343 35968

Brought to you by



Innovative
level-measurement
technologies



NivoRadar®

Intelligent radar technology

- ✓ Narrow 4° beam angle
- ✓ Measurement distance 100m
- ✓ Process-Intelligence-Software
- ✓ 78Ghz technology
- ✓ Integrated lens cleaner

1 Million
applications
solved
worldwide

Mononivo®

Compact vibration probe

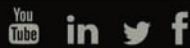
- ✓ Connection thread from 1"
- ✓ All-Rounder for all industries
- ✓ Very light bulk material >20g/l
- ✓ Universal voltage
- ✓ No calibration necessary

UWT - The Level Measurement
Expert



UWT (UK) Ltd
Tel: +44 (0) 1743 718883
sales@uwtuk.com
www.uwtuk.com

ANACONDA®
CRUSH | SCREEN | STACK



Quality Products...
Competitive Prices



EXTENSIVE RANGE OF QUALITY PRODUCTS AVAILABLE

**SCOT
Plant
2016**

22ND - 23RD APRIL 2016
STAND: AVENUE A - NO.5

Bauma 2016
11-17. April, München

HALL B2 - STAND 131



PASSIONATE ABOUT MAGNETS

VISIT US AT
**Bauma
2016**
HALL B2
STAND NUMBER
123



www.conveyortek.com

Another Record Year for SN Engineering - Interview with Mark Osborne, Sales Director



David Roberts (HUB): Congratulations on another successful year. How did your performance compare with previous years?

Mark Osborne (SNE): Thanks. We [SN Engineering] have been able to sustain strong growth for the past several years, in fact almost year on year since formation back in early 2007, and we will finish 2015-16 with sales up by over 50% on 2014-15 and 250% on 2013-14. We are grateful and believe, actually know that there is more to come!

David Roberts (HUB): What do you believe is the reason behind the sustained growth?

SNE: We cannot say that it is just down to one initiative or product. Our success can be attributed to a wide variety of factors and growth in different areas. Certainly, our expertise in dry bulk materials handling equipment, design & supply continues to open up new opportunities, but we are also breaking into new markets with our dust filtration & bulk storage products. In addition, it may sound a little predictable, but our success would not be possible without our dedicated and professional team.

David Roberts (HUB): Are there any particular success stories in 2015?

SNE: I would love to talk in detail about some of the projects we have been or are currently involved in but we are often bound by NDA's. It is the nature of the industry sectors we are heavily involved with and our working closely with a client in developing a solution is where we excel and is one of our strengths. Suffice to say that our top performances over the past 18 months have been in our Filtration ; Loading & Bulk Storage divisions with our Conveying (mechanical screw & pneumatic) playing a leading supporting role. However, it does mean that we often cannot talk about it and that frustrates our marketing and sales team!

David Roberts (HUB): Do you believe that this rate of growth can be sustained in 2016?

SNE: That's the million-dollar question! Of course maintaining growth is always challenging, but we continue to innovate & diversify and that is a major factor in our success. We are in the fortunate position of carrying forward a very healthy order book into the coming 2016 - 17 year & actually believe that there is potential growth right across our product range. Also, export business has always been of low priority to date, however we are seeing a marked increase in interest for our products overseas, we see a huge potential to grow our customer base outside of the UK and that is one of several key initiatives for 2016.

David Roberts (HUB): Are there any particular projects or plans for 2016?

SNE: Over the past 18 months, we have worked hard to improve our identity as a UK manufacturer of dust filtration systems & loading bellows and our marketing team is going to use this as a springboard for 2016. It is an exciting time.

David Roberts (HUB): Good luck for 2016!

SNE: Thank you and I hope that our plans and strategies mean that we do not have to rely on just 'good luck' to hit our 2016 targets. There is a great amount of work still to be done, but we are ready to face up to the exciting challenge.



Bulk bag filler triples capacity at Netherlands mineral supplier

One of the world's major producers of hydrated alumina ($Al(OH)_3$) is TOR Processing & Trade B.V., a branch of TOR Minerals International (www.torminerals.com). From its specialty mineral processing plant in Hattem, TP&T refines and ships hydrated alumina in bulk bags for applications such as flame retardants and fillers for laminates, solid surface, ceramics, plastics and composites.



Twin-Centrepost™ design strengthens bulk bag filler frame as material is filled directly from the mixer above. Fill time has been cut by two thirds by automation and a densification deck that deaerates and densifies the bulk hydrated alumina material.

"Our special processes produce hydrated aluminas in particle sizes ranging from 1 to 110 μm (0.00004 - 0.004 in.)," says Jack Baars, Manager, Maintenance & Technology. "We ship them worldwide in 850, 1000 and 1250 kg (1870, 2200 and 2750 lb) bulk bags."



The operator slides the bag spout onto the inflatable collar and attaches bag straps to retractable hooks that support the bag during filling.



He says filling a bulk bag previously spanned one hour due primarily to the time required for the fine alumina particles to settle.

To overcome dust, air entrainment and filling delays, TP&T installed a Twin-Centrepost™ bulk bag filler from Flexicon Europe Ltd. (www.flexicon.co.uk) that deaerates and densifies the bulk hydrated alumina. Fill time has been cut to 20 minutes, tripling capacity, while filling bags with a greater amount of material and containing dust. The process is automated and safe, and the unit readily fits into the existing plant layout.

Fill more material, faster

Prior to installing the filler, blended material flowed from the mixer through a funnel hopper into a bulk bag suspended on ropes above a scale. The hopper's outlet was manually opened and closed with a slide gate valve. The process was labour intensive and slow, and bags could fall when the ropes were detached.



Operator activates the inflatable collar to form a secure, dust-tight connection, and then actuates the bag inflation blower to remove creases in the bag prior to filling.



Manual effort is now minimised, and filling (directly from the mixer) is fast, precise and automated. The operator hangs the bulk bag loops from the filler's retractable bag hooks, and then slides the bag inlet spout over an inflatable collar. He pushes a button to inflate the collar, creating a positive seal which prevents dust from escaping during the filling cycle. The operator then activates the filler's bag inflator to and pre-expand the bulk bag and liner to eliminate folds and creases which results in a more stable bag once filled.



At the control panel, the operator programs the weight to be filled, and initiates the filling cycle. Load cells supporting the filler frame transmit weight gain information to the PLC, which closes a pneumatic slide gate valve when the bag achieves its target weight.



Forklift truck removes palletised filled bag.

At the PLC control panel, the operator programs the weight to be filled, and initiates the filling cycle. During filling, the densification deck raises and vibrates to deaerate and densify the finely powdered material. An air vent connected to a filter sock captures airborne dust displaced by material entering the bag.

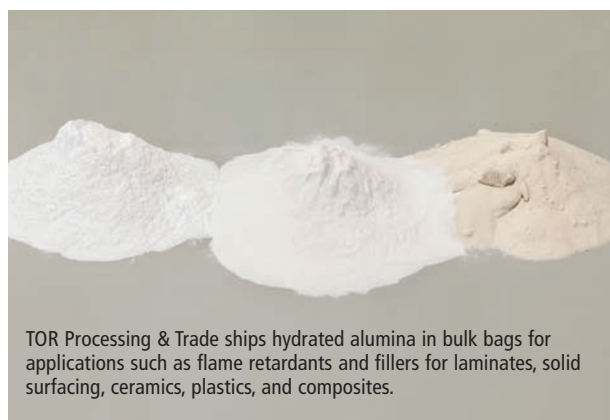


View from below shows the fill head, forklift sleeves for adjusting the fill head height, retractable bag hooks for supporting the bag, and vent for capturing displaced air and dust.

Load cells supporting the filler frame transmit weight gain information to the PLC, which closes the pneumatic slide gate valve at the mixer's discharge port when the bag achieves its target weight.

The operator then deflates the collar, ties the bag spout, and removes the palletised bag with a forklift.

Mr. Baars adds that suspending the bag securely from hooks instead of ropes has also improved the safety of TP&T's bulk bag filling operations.



TOR Processing & Trade ships hydrated alumina in bulk bags for applications such as flame retardants and fillers for laminates, solid surfacing, ceramics, plastics, and composites.

Cubby Construction Ltd Invest In A New Portafill 3000 Screening Plant

Riverside Machinery Ltd, have recently delivered a new Portafill 3000 to Cubby Construction Ltd

Cubby Construction Ltd, a Carlisle based company, are a multi disciplined organization specializing in construction, civil engineering and housing since 1968.

The decision was made to purchase a Portafill 3000 after Cubby Construction were successful in winning several high profile jobs to supply top soil and single sized aggregates.

The Portafill 3000 ticked the box in a number of areas. The benefits of this machine include the compact nature of the machine weighing only 12 Tonnes. The ability to fit a washing system to the screenbox as and when required. Last but not least the ability to use the machine in a 2 - fraction format.

John O'Neill comments "this is Cubby Construction's first screening plant and we are delighted they were able to see the huge benefits the Portafill machine offers. We look forward to a great relationship with them"



www.hub-4.com/directory/12459

INTRODUCING THE CITYEQUIP JAW CRUSHER

700 x 500 Jaw Opening / Diesel/Electric / 15 Tonne Weight
Available As Hook Lift or Tracked / Made In Germany

**FROM
£125,000
+ VAT**

Sole UK Distributor For:

cityequip
mineral processing

**RIVERSIDE
MACHINERY**

Riverside Machinery
Email: sales@riverside-machinery.com
Web: www.riverside-machinery.com

Main: +44 (0) 800 689 9024
Mob: +44 (0)7766 405688 - John (Southern UK)
Mob: +44 (0)7500 048985 - Ciaran (Northern UK)

Vulcan Asphalt Group leading the way in Asphalt Combustion



2016 has started off with a roaring start, with 3 burners commissioned in January and the recently launched LPG burner, 2016 is looking to be Vulcans biggest year to date.

Vulcan have successfully installed & commissioned a new Vulcan burner at JV North Kent Roadstone to replace its old TJ type burner to increase efficiency & productivity. Due to the customer's previous success with Vulcan upgrades, the Vulcan burner range was the burner of choice for this bespoke upgrade contract.

What makes the Vulcan experience stand out above the rest, is the additional assistance & advice that the customer receives to gain additional savings across the plant, this can range from dryer re-configurations that can increase mix varieties, increase the dryer efficiency to plant operation training and full site evaluations, making a Vulcan installation a full bespoke package to the individual user. The Vulcan engineering team have been commended for the help and assistance that is offered during the whole process from quotation stage, site preparation and utilising site downtime effectively to the aftercare service provided.

Vulcan are also happy to announce the official launch of the Vulcan L-B range, a highly efficiency multi-fuel burner specifically designed with the use of LPG. LPG is another fuel alternative for those who do not have access to the Natural Gas grid and want to cut emissions and reduce their fuel bill. Please get in touch for more information
jodie.mccann@burnerservices.net or Tel: +44 (0) 28 79469501

 www.hub-4.com/directory/11981

BULKOS Bucket Elevators for Vertical Transportation of Bulk Materials

RUD Chains Ltd is one of the world's largest manufacturers of round steel chains, producing top quality chain components and systems for a wide variety of markets and applications. They supply the bulk materials industry with a range of: complete bucket elevators and spare parts, complete conveyor systems and drive systems for bulk materials handling.

RUD BULKOS complete bucket elevators are typically suited for vertical conveying applications for powdery, granular, lumpy and high temperature bulk materials. They are used across a range of industries for the vertical transportation of goods such as: fertiliser, potash and salt, cement, sand and gravel, among other materials.

The bucket elevator range consists of BULKOS round steel chain type bucket elevators, high performance central chain bucket elevators and belt type bucket elevators. Due to RUD's wealth of experience transporting cement, lime, gypsum, salt and fertiliser, all their bucket elevator components are perfectly coordinated to provide a reliable, long-lasting system.



BULKOS round steel chain bucket elevators enables handling of materials under the toughest of conditions, such as high temperatures or bulk flow rates. The elevator offers multiple link bucket attachments which are extremely robust and ensures a high level of safety during the transportation of goods.

High performance central chain bucket elevators are used to provide maximum conveying capabilities in extreme conditions, and to meet high speed conveying requirements.

BULKOS belt type bucket elevators are reinforced with textile or steel inlays. They ensure easy transportation of materials, even at the highest of conveying heights.

The transportation of bulk materials is a major challenge, system availability and reliability are often overlooked and quick solutions are used which only secures limited success. RUD are a valued supplier and experienced manufacturer supplying a selection of conveyor and conveying systems for the bulk materials industry.

 www.hub-4.com/directory/743

Exhibitions & Events Diary



BAUMA 2016

11-17 Apr 2016
Munich, Germany
www.bauma.de



CARS

13-14 July 2016
Donington Park Circuit
Derby



SCOTPLANT

22-23 April 2016
Royal Highland Centre, Edinburgh
www.scotplant.com



RWM

13-15th September 2016
NEC Birmingham
www.rwmexhibition.com



IFAT

30 May - 3 June 2016
Munich, Germany
www.ifat.de



POLLUTECH 2016

29 Nov - 2 Dec 2016
Lyon, France
www.pollutech.com



WASTE'16

9th June 2016
AJ Bell Stadium, Manchester
www.wastexpo.co.uk



CONEXPO

7-11 March 2017
Las Vegas, USA
www.conexpoconagg.com



HILLHEAD 2016

28-30 June 2016
Buxton, Derbyshire
www.hillhead.com



CQMS 17

21 -22 April 2017
Co. Offaly, Ireland
www.machinerymovers.ie



HUB Features 2016

Global News & Information on the Quarrying, Recycling & Bulk Materials Handling Industries'

The HUB magazine is posted out to 6,000+ individually named recipients, and it is delivered to place of work, not their home address. This means that we get to end users and sites, and our 'pass-on' rate is currently at around 3 meaning that our estimated readership is 18,000 each quarter. Plus, our readership don't have to pay any subscription to receive the Magazine.



March 16

BAUMA 2016

Show Preview

QUARRYING - Dump trucks, excavators & wheeled loaders. Tyres and tyre chains, wheel washing equipment.

RECYCLING - Excavator

Attachments, Screening Buckets, Crushing Buckets, safety couplers, Grabs, Pulverisers and Shears.

BULK HANDLING - Storage & handling, level measurement & control - hoppers, feeders and chutes.

Editorial copy deadline 5th March 2016

Advert copy deadline 15th March 2016



May 16

HILLHEAD 2016

Show Preview

IFAT 2016

Show Preview

QUARRYING - Tier 4 Engine Technologies and Associated Equipment, Dual Power Technologies. Health & Safety equipment and technology. Vehicle Reversing and Camera Safety.

RECYCLING - Waste sorting and separating equipment and solutions for the waste industry.

BULK HANDLING - Conveyors, stackers, stockpilers, elevators, feeders, chutes & hoppers.

Editorial copy deadline 5th May 2016

Advert copy deadline 15th May 2016



July 16



RWM NEC BIRMINGHAM

RWM 2016 Show Preview

QUARRYING - Mobile and static crushing and screening equipment.

Crusher spare and wear parts. Screens and screen media.

RECYCLING - Shredders, Grinders & associated technology. Recycling of plastics.

BULK HANDLING - IBCs and FIBCs - technology for weighing, filling and processing screw, pipe and pneumatic Conveyors, silos, blowers, valves and discharge systems.

Editorial copy deadline 5th July 2016

Advert copy deadline 15th July 2016

September 16

QUARRYING - Construction and quarrying machine control systems, survey & positioning equipment and associated technologies. Pumps & associated technology. Dust Suppression and Control.

RECYCLING - MRF's and associated equipment in the waste process line, including trommels, magnets, air and ballistic separation technology. Recycled secondary aggregates.

BULK HANDLING - Port equipment, logistics, railways & associated technologies in the movement of bulk materials.

Editorial copy deadline 5th September 2016

Advert copy deadline 15th September 2016

November 16

IRISH Special -

Spotlight on Ireland

POLLUTEC 2016 Show Preview

QUARRYING - Asphalt & Concrete plant + associated equipment. Concrete retaining walls & storage solutions.

RECYCLING - Compaction, baling and wrapping equipment - waste compactors, cardboard balers, waste balers, vertical balers, horizontal balers, baling twine, balers, mill balers, baling equipment.

BULK HANDLING - Biomass industry equipment and technology. Processing of Energy from Waste.

Editorial copy deadline 5th November 2016

Advert copy deadline 15th November 2016



NOW RECRUITING

BUSINESS DEVELOPMENT MANAGER EUROPE

BUSINESS DEVELOPMENT MANAGER AFRICA

SALES ENGINEER CRUSHER PARTS

SALES ENGINEER ASPHALT PLANT PARTS

COMPETITIVE SALARY, BENEFITS & OPPORTUNITIES FOR CAREER DEVELOPMENT

CMS Cepercor are Europe's leading aftermarket supplier of crusher, screen and asphalt plant spare parts supplying mining, aggregate, demolition and recycling industries worldwide.

We are seeking candidates looking for a long term career move (with opportunity for progression) with a growing and successful business based in Coalville, Leicestershire.

Remuneration packages will be competitive and commensurate with role and experience

If you believe that you have the skills and industry experience in any of the following roles we would encourage you to send us your CV to recruitment@cmscepcor.com



1 Vulcan Way, Coalville, Leicestershire LE67 3AP T. +44 (0) 1530 817 000

www.cmscepcor.com

The Genuine Alternative

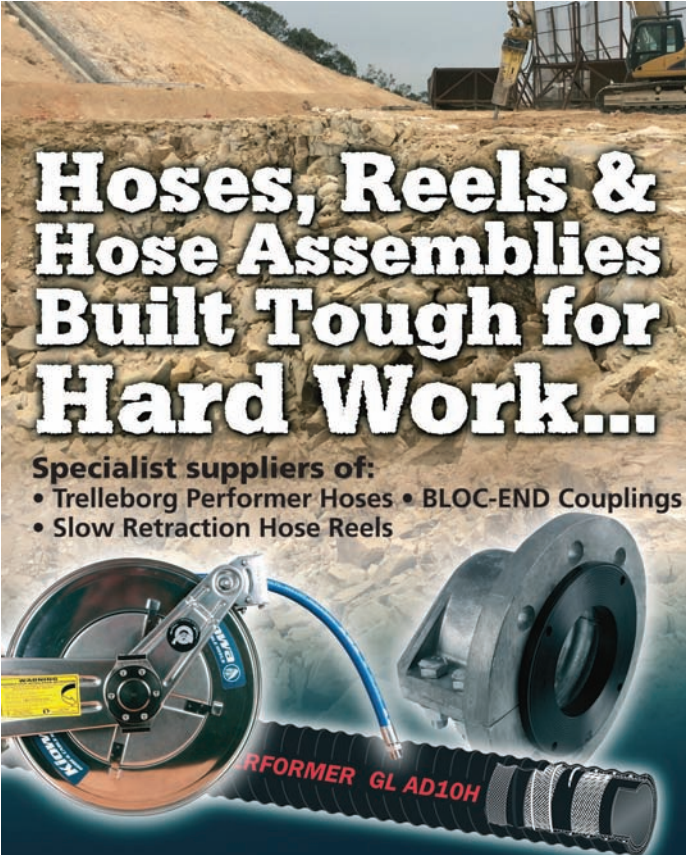



INCREASE YOUR TRAFFIC

TRY THE HUB 'COMBO' PACKAGE

- Full Enhanced Business Entry in the HUB Business Directory
- Includes Enhanced Entry + six 1/4 page classified adverts in magazine, just £1100
- Optional design of advert £95

Prices exclude VAT

Hoses, Reels & Hose Assemblies Built Tough for Hard Work...


Specialist suppliers of:

- Trelleborg Performer Hoses • BLOC-END Couplings
- Slow Retraction Hose Reels

Kiowa

Industrial Hose | Hose Assemblies | Fluid Power

T: 01529 416200 E: sales@kiowa.co.uk www.kiowa.co.uk



RIVERSIDE MACHINERY

Tel: +44 (0)800 689 9024 Mob: +44 (0) 7766 405688
Fax: +44 (0) 800 471 5099 Web: www.riverside-machinery.com
Email: sales@riverside-machinery.com



**OVERBAND
MAGNET**
BRAND NEW,
Large Selection
In Stock, from
£3,550
+ VAT



**FINLAY
393
SCREENER**
Year 1997
£15,000
+ VAT



**POWERGRID
800**
Year 2002
£12,850
+ VAT



**CITYEQUIP
HOOK LIFT
JAW
CRUSHER**
Year 2016, NEW
£136,000
+ VAT
£500 PER DAY
+ VAT



POWERSCREEN 615 TROMMEL
Year 2002, 40mm Punch Plate
£23,500 + VAT



VIBRATING GRIZZLY Year 2015
£5,250 + VAT



**POWERSCREEN
TRIDENT
X2 DEWATERER**
Refurbished,
2 Sands
£17,500
+ VAT



PORTAFILL 3000 WASH PLANT
Brand New **£138,000** + VAT

- ▶ Guaranteed Performance Results
- ▶ Electric or Hydraulic Drive
- ▶ High Strength Magnets
- ▶ Fast Deliveries
- ▶ Competitive Prices

CONVEYOR MAGNET MANUFACTURERS

THE CONVEYOR PEOPLE

ConveyorTek Ltd

NI: 028 92 652666

ROI: 048 92 652666

E: sales@conveyortek.com

www.conveyortek.com

conveyortek



MASTER MAGNETS LTD

INCORPORATING METAL DETECTION LTD

BURNT MEADOW ROAD, NORTH MOONS MOAT, REDDITCH, WORCS B98 9PA

TEL: +44 (0)1527 65858

www.mastermagnets.com

www.metaldetection.co.uk

Transform site liabilities into environmental and financial assets

Do you have land that has been subject to mineral
extraction, waste disposal or severe disturbance?



The 4R Group excel at providing cost effective
site restoration schemes which can provide an
income to the site owner

To find out more contact Paul Whyatt,
Land Restoration Manager

T: 0113 232 2400

E: info@4r-group.co.uk

A wide range of crushers for processing all types of friable and fibrous materials



BJD Crushers Ltd

T: +44 (0)1226 241 425

F: +44 (0)1226 296 713

E: sales@bjdcrushers.co.uk

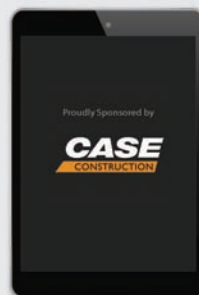
www.bjdcrushers.co.uk

DOWNLOAD THE **FREE** HUB APP TODAY



Available on the iPhone
App Store

ANDROID APP ON
Google play



Introducing the NEW Terex® Finlay I-140 Impact Crusher

The Terex® Finlay I-140 shapes the future through innovation. This new generation impact crusher with redefined style and advanced technological design gives improved material flow and production capabilities in quarrying, mining, demolition and recycling applications.

Incorporating the Terex® CR032 impact chamber with direct drive and advanced electronic control system the machine provides operators with high material reduction ratios and produces a consistent product shape.

The high productivity, ease of maintenance and operation makes the machine an ideal solution for large scale producers and contact crushing operators.

Key Features:

- ▶ The ease of material flow through the machine has been greatly improved with each component increasing in width as the material moves through the machine.
- ▶ Fully hydraulic assisted apron setting features makes adjustment of the aprons convenient and efficient.
- ▶ Optional under crusher vibratory plate feeder with wear resistant liners aids material discharge flow.
- ▶ NEW chamber design boasts a larger crushing area giving greater product throughput and higher reduction ratios



TEREX | FINLAY



www.terexfinlay.com

Terex® Finlay, Drumquin Road, Omagh, Co. Tyrone, Northern Ireland. BT78 5PN T: +44 (0) 28 82 418 700 F: +44 (0) 28 82 244 294 E: sales@terexfinlay.com

All rights are reserved. Terex® is a registered trademark of Terex Corporation in the USA and many other countries. Copyright 2016 Terex GB Ltd.