

DOWNLOAD THE **FREE**
HUB APP TODAY

Available on the iPhone
App Store

Available on Google play



Issue 36

HUBTM4

**Global News &
Information** on the Bulk
Materials Handling,
Recycling & Quarrying
industries

Check out the very latest industry news at www.hub-4.com

The Complete Quarry Solution

New and used static &
mobile quarry plant, spares
and on-site maintenance



CMB International Limited

LITTLE ALTON FARM, THE ALTONS, RAVENSTONE,
LEICESTERSHIRE LE67 2AA UK T: +44 (0) 1530 563600

www.cmb.uk.com

Introducing the **NEW** **Terex® Finlay I-140** **Impact Crusher**

The Terex® Finlay I-140 shapes the future through innovation. This new generation impact crusher with redefined style and advanced technological design gives improved material flow and production capabilities in quarrying, mining, demolition and recycling applications.

Incorporating the Terex® CR032 impact chamber with direct drive and advanced electronic control system the machine provides operators with high material reduction ratios and produces a consistent product shape.

The high productivity, ease of maintenance and operation makes the machine an ideal solution for large scale producers and contact crushing operators.

Key Features:

- ▶ The ease of material flow through the machine has been greatly improved with each component increasing in width as the material moves through the machine.
- ▶ Fully hydraulic assisted apron setting features makes adjustment of the aprons convenient and efficient.
- ▶ Optional under crusher vibratory plate feeder with wear resistant liners aids material discharge flow.
- ▶ NEW chamber design boasts a larger crushing area giving greater product throughput and higher reduction ratios



Visit Us at:

Bauma 2016
April 11-17, Munich

FM.711

I-140



TEREX® | FINLAY



www.terexfinlay.com

Terex® Finlay, Drumquin Road, Omagh, Co. Tyrone, Northern Ireland. BT78 5PN T: +44 (0) 28 82 418 700 F: +44 (0) 28 82 244 294 E: sales@terexfinlay.com

All rights are reserved. Terex® is a registered trademark of Terex Corporation in the USA and many other countries. Copyright 2016 Terex GB Ltd.

Finlay Scotland and Jim Jamieson quarries - a perfect match!



Supplying the Aberdeenshire region from the Ardlethen quarry near Ellon, Jim Jamieson's 100 acre operation is one of the busiest in Scotland. The HUB were given full access and a complete tour of this immaculate facility, one of the most impressive quarries visited. Jim Jamieson has been a leading figure in the quarrying, construction, civil engineering, waste handling and recycling industries across the Grampian and Aberdeenshire regions for 40 years, and this family run business continues to go from strength to strength, having recently been awarded Scotland's Transport News Top Tipper Operator for 2016.

Left to right: Jim Jamieson, Managing Director of Jamieson Quarries, Tom McNeill, Managing Director of Finlay Scotland and Gemma Jamieson, Office Manager for Jamieson Quarries

Supplying superb weathered granite, this vast quarry demands high quality machines and minimum downtime. To allow for maximum productivity and flexibility the quarry operates a fleet of tracked mobile crushing and screening equipment, a very high percentage of which are Terex® Finlay product. Finlay Scotland have a strong relationship with Jim Jamieson and have been supplying machines for over 20 years. Early on, Jim first hired a Finlay mobile screen from Tom McNeill at Finlay Scotland to experience mobile quarrying, and this led to a long-lasting partnership.

Currently Jim has nine Terex® Finlay machines powering his quarry production train and over the years has purchased around 20 in total. Jim Jamieson was the first in Europe to take delivery of the Terex® Finlay C-1550 cone crusher, the Terex® Finlay J-1480 jaw crusher and the Terex® Finlay 893 heavy duty screener when launched, and other machines in the line-up include the Terex® Finlay J-1175, and more recently the Terex® Finlay 893 screen, the Terex® Finlay 883+ Spaleck screen and the Terex® Finlay 694+ inclined screen.

Current Terex® Finlay line-up at Ardlethen quarry:

- J-1480 jaw crusher
- C-1550 cone crusher
- J-1175 jaw crusher
- 883+ heavy duty screener
- 893 heavy duty screener
- 694+ inclined screener
- 683 inclined screener



Jim Jamieson commissioned a high quality model company to replicate his fleet of lorries

We went down into the quarry to see the machines working, and also saw a new machine being tested by Jim Jamieson, the new Terex® Finlay C-1554 Cone Crusher. The Terex® Finlay C-1554 is the ultimate mobile solution for any aggregates producer or contractor looking for a high output capacity machine that provides large reduction ratios and an excellent cubical shape. This aggressive machine incorporates the proven Terex® MVP450x cone crusher that can accept an all in feed and features direct variable speed clutch drive, automatic tramp relief and hydraulic closed side setting (CSS) adjustment.

Jim Jamieson's fleet of trucks



The large hopper/feeder on the plant has an automated metal detection and a purge system designed to protect the cone and reduce downtime by removing metal contaminants via the purge chute. The Terex Finlay C-1554 is the highest capacity machine in the current range of cone crushers. The plant has been specifically developed for quarry operators, construction companies or contractors producing large volumes of aggregates.



Terex® Finlay 893 heavy duty screener (forefront) with an extensive selection of Terex® Finlay kit

The plant can accept an all in feed from a primary crusher, excavator or shovel to provide high reduction ratios and produce a product with excellent cubicity. It also features a fully hydraulic CSS Adjustment with electronic monitoring system ensuring ease of operation, fuel efficient direct drive transmission through wet clutch, and hydraulic tramp relief system with automatic reset which protects the chamber and minimises downtime. A metal detection system on the feed

belt with 'auto-stop' protects the cone from tramp metal and the purge system removes contaminants from the machine.

Another important machine is the Terex® Finlay J-1480, this work-horse incorporates the Terex Jaques JW55 single toggle jaw crusher which boasts a throughput capacity up to 750mtph depending on application and material. The machine is available with the optional direct drive which offers improved fuel efficiency and greater power utilisation or the standard hydrostatic drive which offers reversible operation for clearing blockages and for use in demolition applications. The large 10m³ hopper has hydraulically folding sides and hydraulic wedge clamp system providing faster machine set up time. The machine features a vibrating pan feeder and an aggressive independently driven pre-screen which provides optimum separation of dirt, fines and difficult materials.

The Terex® Finlay 893 has been on site for approximately two years now and has certainly proved its worth. The Terex® Finlay 893 is a highly versatile and aggressive machine engineered and built for working in large scale quarrying, mining, construction and demolition debris, topsoil, recycling, sand, gravel, coal, ore and aggregate applications. The plant has the capacity to process at a rate of up to 800 tonnes per hour and can be fed either by a tracked mobile crusher, shovel or an excavator. Depending on the application the working angle of the aggressive screenbox can be hydraulically adjusted to between 14 - 18°. A key feature of the machine is the capability to change the working angle of the hopper/feeder. The working position can be lowered so that it can work with ease with a mobile crusher. The hopper/feeder working position can be raised to provide a reduced feeder angle when operated in direct mode from an excavator or shovel.





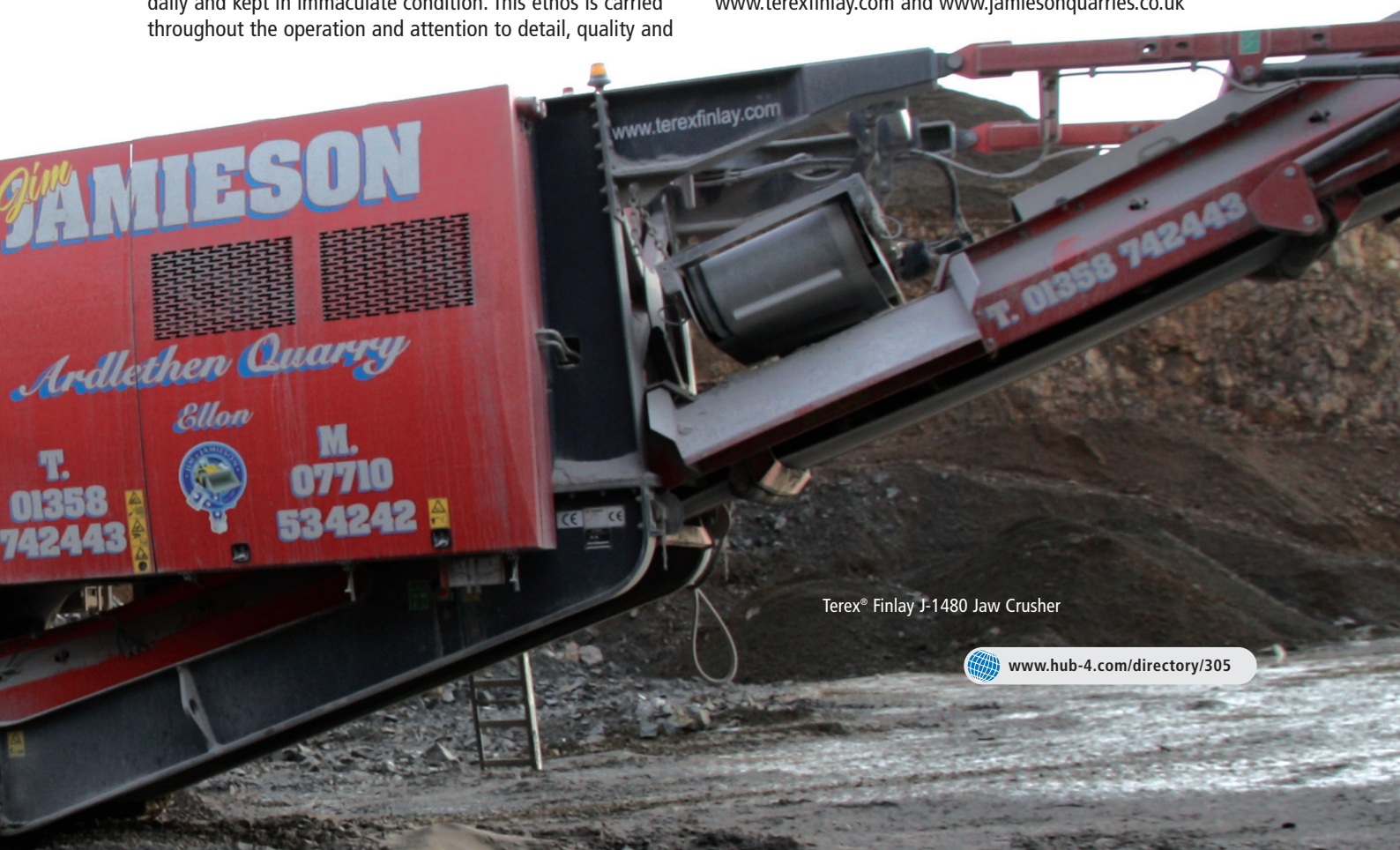
Terex® Finlay J-1480 Jaw Crusher and the C-1554 Cone Crusher

The screenbox top deck can be fitted with a variety of screening media including; Mesh, Punch plate, bofar bars & Tines. The bottom deck can be fitted with mesh, punch plate & cascade fingers. This fully self-contained plant can be hydraulically folded and ready for transport in less than 30 minutes making it the ideal machine for large scale contract screening projects where a highly productive and dependable screen is paramount.

As well as Ardlethen quarry, Jim Jamieson operates two other sites at nearby Whitecairns and Newmacher employing over 60 staff, many who have been long-term employees. Jim runs a fleet of 26 lorries across the three sites and all are washed daily and kept in immaculate condition. This ethos is carried throughout the operation and attention to detail, quality and

cleanliness is abundant to see in the quarry. Jim Jamieson is also a great supporter of local charities and believes in giving things back to the community. Jim's daughter, Gemma is heavily involved in local charities, and they have raised over £70,000 for Peterhead & Aberdeen Maternity Hospitals, including the Neo Natal Unit within Aberdeen. Gemma lost twin boys back in 2009 and went on to have daughter Molly, who was born premature in 2011 where she spent some time in the unit. The Special Nursery in Aberdeen holds a very special place for the Jamieson Family. We wish Gemma all the best in achieving her £100,000 goal.

For more information please visit www.finlayscotland.co.uk, www.terexfinlay.com and www.jamiesonquarries.co.uk



Terex® Finlay J-1480 Jaw Crusher



www.hub-4.com/directory/305

Introducing the NEW Terex® Finlay C-1545 Cone Crusher

The Terex® Finlay C-1545P incorporates the Terex 1150 cone crusher driven through by direct clutch drive with variable speed, automatic tramp relief and hydraulic closed side setting (CSS) adjustment.

The machine features an on-board forward facing pre-screen module with a 2.1m x 1.52m (7' x 5') single deck screen for removal or bypass of fines from the feed material. The fines material can be discharged from the machine using the optional on-board by-pass conveyor or reintroduced onto the main product conveyor. Both methods improve the overall plant throughput capacity, product flexibility and liner wear reduction.

In applications where pre-screening of the feed material is not required the module can be hydraulically repositioned beneath the hopper/feeder. This provides a more compact working envelope as the feeder/hopper can hydraulically adjusted to feed directly into the cone chamber.

Key Features:

- ▶ NEW Terex TC1150 cone crusher provides high reduction and productivity ratios and gives excellent product cubicity.
- ▶ The forward facing pre-screen module maximizes production and reduces wear on the chamber by removing fine materials before it enters the cone.
- ▶ The large hopper/feeder on the plant has an automated metal detection system to protect the cone and reduce downtime.
- ▶ The pre-screen module can be used to produce a roadbase product from the on-board side conveyor.



www.finlayscotland.com

Finlay

In this issue

SPECIAL FEATURE	3
COVER STORY	8
NEWS	11
QUARRYING	18
WASHING & SCREENING	37
RECYCLING	55
METAL SEPARATION	73
BULK HANDLING	77
BULK WEIGHING	82



Hub Digital Media Limited
27 OLD GLOUCESTER STREET, LONDON WC1N 3AX

Issue 36 - Winter 2016

Sales & Advertising Enquiries:
+44 (0) 20 3637 0385

Global Sales Manager
David Roberts
david@hub-4.com

Editor
John Edwards
john@hub-4.com

Advertising Accounts Manager
Sophie Morgan
sophie.morgan@hub-4.com

GB aggregates markets in 2020 expected to get back to 2007 levels

Aggregates markets in Great Britain are forecast to get back to the levels seen in 2007 by 2020. Currently, demand is nearly 20% lower than 10 years ago. Author of the report, Andy Sales said 'The aggregates industry can expect encouraging market growth for the next few years. Yet by 2020, this will only bring the industry back to 2007 levels, which at the time, was regarded as a fairly typical year'.

These are some of the conclusions of a new BDS report on the aggregates industry entitled: 'The primary aggregates producing industry in Great Britain - Its structure, markets and prospects'. This 47 page report brings together in one document, an analysis of the current market and trends. It will be of invaluable use to all aggregates companies and others such as suppliers of equipment and services, that rely on the industry for much of their business. The aggregates industry represents a market of around £2 billion and is key to the Government's plans to boost infrastructure spending. BDS has identified the importance of added value asphalt and concrete markets to aggregates companies. Over 40% of aggregates are now sold into these sectors.

There have also been noticeable trends within individual aggregates sectors. Markets for lower grade materials have largely been lost to recycled and secondary aggregates. Difficulties of replenishing aggregates reserves have seen volumes of concreting gravel decline. These have been replaced by increasing sales of crushed rock concreting materials.

Despite the growth in alternative materials, BDS estimates that primary aggregates continue to represent over 70% of the total aggregates market. 'We do not expect this to materially change' said Andy, 'Most demolition and construction waste is already being recycled. There are some exciting developments taking place with secondary aggregates, but these will have only a limited impact on total aggregates demand'.

The BDS report also reviews the current market position of the six largest aggregates companies and assesses how these businesses are likely to develop. Information is also provided on company market shares and the current reserves situation of the industry.

www.bdsmarketing.co.uk



Magazine Subscriptions - the HUB magazine is available free of charge within the UK, please send an email to admin@hub-4.com stating your name, title, company, full postal address and email address. We will then review your application. The HUB Magazine is also available in Europe, Ireland, the USA and Worldwide on a paid subscription basis at £115 (+ VAT per year where applicable) for six issues, please email admin@hub-4.com for more details or call +44 (0)20 3637 0385.

CMB continue to provide leading edge crushing and screening services....

CMB International continues to provide leading edge crushing and screening services with their range of innovative and efficient processing machinery. Combining advanced technology along with mineral processing fundamentals, CMB can now offer a comprehensive range of mobile and static crushing and screening equipment. CMB have created an impressive family of processing plant, including Jaw Crushers, Cone Crushers, Screens and Feeders all manufactured at the Leicestershire operation.

New developments:

With modern asphalt plants demanding high capacity production of closely sized aggregates Leicestershire based CMB International have added a range of asphalt screens to their existing screen portfolio. Within excess of 20 years' experience the philosophy of CMB International has always been and remains customer driven.

Continually evolving CMB aim to meet and exceed the requirements and expectations of the aggregates market.

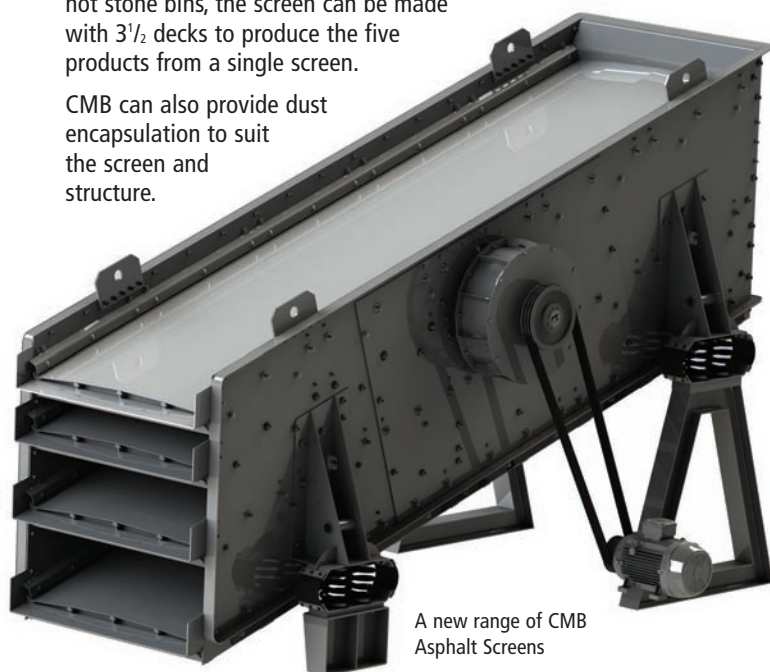
Specifically designed to meet the demanding requirements of asphalt plant operations the new range of CMB asphalt screens offer an in-house bespoke replacement of an existing screen. CMB insist on critical measurements of the existing envelope, ensuring a good 'fit' and consequently minimising extra structural work required to accept the new screen.

To assist with the high temperatures generated within the screen bearings, CMB use high temperature grease that works with an auto-grease unit, which constantly "drip-feeds" the bearings with the high temperature grease. All high temperature seals are used within the vibrator unit.

Size ranges from 1.2 x 3m - 2.7 x 7.2m single, double or triple deck, depending on capacity requirements.

Where five products are required to supply five hot stone bins, the screen can be made with 3½ decks to produce the five products from a single screen.

CMB can also provide dust encapsulation to suit the screen and structure.



A new range of CMB Asphalt Screens



Yarrow Aggregates Ltd

Keeping the industry moving:

CMB have recently supplied a RS150 Cone Crusher to Yarrow Aggregates Ltd who are based at Little Catwick Quarry, near Beverley, East Yorkshire.

Recent developments within the company have included the establishment of a recycling plant for aggregates which will enable the current extensive reserve of aggregates to be conserved further into the future.

The decision to purchase an RS150 Cone Crusher came from a meeting at the Hillhead Quarry exhibition in 2014.

John Bird of Yarrows, commented, "We were in the process of producing sand utilising a 10mm feed material and we had several crushers on hire but with little success. We met CMB at the Hillhead show and discussed our processing issues with them and they came up with the ideal solution."

Producing sand from a 10mm feed is quite a tricky process due to the small size of feed material and the small size of the product required. It is common for crushers to "pack up" when crushing such small material on a tight crusher closed side setting.

Liam Holland - General Manager of CMB, commented, "We had a long discussion with John about his process, and as he also wanted to perform normal crushing operations we suggested the RS150 would be the ideal cone crusher for his requirements,"

Subsequently a modular RS150 on a skid structure was supplied and installed. This features an on-board electrical starter panel, lubrication and hydraulic systems which allowed for easy installation on site, just requiring connection to the site's electrical supply.

John further commented, "We are delighted with the results, the RS150 is doing exactly what is required. It has been a very smooth process from our initial discussion to installation and commissioning earlier this year."

A new screen from CMB International resolves long standing production issues at Leamouth Wharf.

Owned and operated by CEMEX UK, Leamouth Wharf is a busy operation that is situated in Southampton. It's a busy riverside operation that like any other processing plants relies on efficient and dependable processing equipment to maintain the regular flow of sold materials supplied to the local construction industry.

With on-going screen issues that have lasted for a lengthy period a decision was made to replace the malfunctioning primary aggregate screen that had continually affected production.

Peter Lamb - Wharf Manager, commented, "I have run the unit for 6-7 years and the screen has been problematic. We spent a lot of time working with it and eventually decided to replace it (CMB didn't actually quote at this time). So we went to the market and selected a new machine. The new suppliers were told that the screen had been historically problematic as had the screens before that. We looked at resonance on the plant and the structure and found the resonance running on the structure itself was close to what the new screen was going to be. We knew that these need to be as far apart as possible so consequently we did a lot of structural work before the new screen was installed."

"After installation we experienced all the same problems, so a decision was made to go to market again and as CMB provided a very competitive quote and had also successfully installed screens at CEMEX UK - Northfleet and Angerstein plants we gave them the order."

Production back on track

Having won the order to supply and install a new 2.4 x 7.2m double-deck screen CMB engineers discovered that the existing screen was running at a high level of G force.

Martin Brough - Director CMB, commented, "We found that the high level of G force was putting a lot of force on the screen cross members and side plates. We therefore decided to supply a heavy-duty screen that would not only solve the issues but cope with any future production increase within the plant."

The new screen was subsequently installed using S.P Services who completed the removal and installation over 4/5 days which also included removing the roof and conveyor above the screen.

With a constant feed of dredged material the screen has to cope with a variable mix which can change from sand to stone overnight. Unlike a quarry where the feed is pretty



much the same, the screen at Leamouth has to contend with 80-90% sand and then 50% shingle and when the crusher comes into play then 70% stone. As the screen has to constantly cope with this mix it can have all the weight on the top deck and then all the weight on the bottom deck so it's essential that the screen can handle all the variables and maintain the production without breakdown.

Martin further commented, "We did have some minor issues with material building up and forming 'dead spots' however with a few tweaks this was quickly resolved and the screen can quite happily take 250tph of dredged material."

Peter further commented, "It was only a very slight adjustment but it certainly did the trick and we immediately achieved the tonnage we required! The screen has now been running approximately four months and it hasn't missed a beat."

With full support from CMB International the replacement has been a total success and Leamouth Wharf is now back in constant production.

Dewatering screen at J Clubb Ltd



CMB International Ltd

Leading Edge Crushing and Screening
www.cmb.uk.com



www.hub-4.com/directory/185

PRECISE PAVING PERFORMANCE



The P5770C ABG, P5870C ABG and P6870C ABG wheeled pavers from Volvo Construction Equipment are built to maximize productivity and deliver precise control on any paving project. The C-Series pavers feature a smart power setting which reduces fuel consumption by up to 30% as well as three drive modes to match different paving conditions. With Volvo's unique hydraulic self-leveling suspension system and industry-leading screeds, you'll experience excellent traction control and a smooth and uniform mat. Volvo C-Series wheeled pavers: paving the road to success.

Volvo Construction Equipment Division
Volvo Group UK Ltd
Duxford, Cambridge CB22 4QX
Telephone: 01223 836636 Fax: 01223 832357
sales.vcegb@volvo.com www.volvoce.co.uk

Volvo Construction Equipment



New Rapid Trakmix: A Successful International Launch Event



The international launch of the Rapid Trakmix was marked by a week of events on November 9 - 12, at Cenin cement factory in Bridgend, South Wales. Cenin's headquarters provided optimal conditions for the series of concrete & hydraulically bound materials demonstrations using the company's highly sustainable, consistent range of cements. A variety of activities took place, including, demonstration of 'Cendri' in Ground stabilisation applications improving load bearing strengths in a variety of soil types. 'Cendri' is a process or pre mixed material used to improve material recovery and drastically improve screen productivity when handling wet materials. Attendees were also provided with tours of Cenin's ultra low carbon cement factory, laboratory and on site renewable energy resources. The open event was attended by a number of delegates from approximately 30 major concrete, construction and environmental companies.

Rapid's latest innovation, Trakmix, is a track mounted, totally mobile and self-contained, fully weighed high volume mixing plant. Trakmix was designed in response to the growing demand for a mobile continuous mixing plant which provides easy, cost effective transportation and eliminates the need for special transportational permits. Customer demand also indicated a need for a machine providing more options on outputs on a different platform, offering flexibility for a wide range of site types and applications.

Trakmix features a number of innovative, patent pending features, including a superior controls system that weighs all materials and double hopper cement weighing system. Other cutting-edge features include low friction surface lining on hoppers, bottom conveyor for

easy cleanout and out-loading conveyor for easy discharge. Trakmix offers outputs of up to 250 tonnes per hour via a high volume continuous Rapid Twin Shaft mixer and 12.0m³ aggregate hopper, which includes a division plate for two different types of aggregates. The Rapid designed continuous twin-shaft mixer (pugmill) is the largest and fastest continuous mixer on the market, with specially phased shafts and paddles ensuring a homogenous mix for a variety of applications within the concrete, construction and environmental industries.

The Trakmix has been designed with ease of mobility and set up in mind. The machine possesses an entirely self-contained design mounted on tracks including on-board genset, providing mobile flexibility.

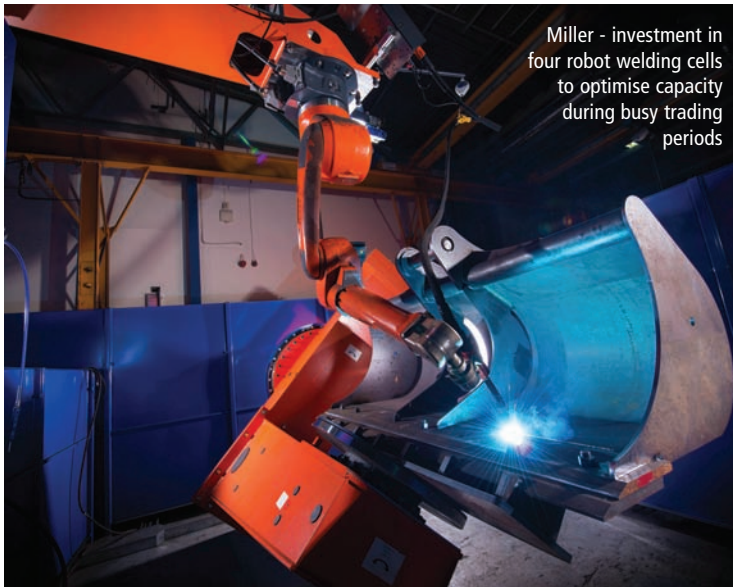
Full weighing capabilities are provided via an integral fully automated control system. Adjustable feeder gates from the aggregate bins are provided in addition to a variable speed belt feeder to aggregate weigh belt. Powders are fully weighed via a twin hopper system with twin-screw discharge and flow-meter provides metering of the water. An integral 600 litre water tank and provision for admixtures is also included.

Trakmix is recommended for applications where all types of binders or neutralising powders are required in the mixing process, including road construction, road paving, ground works/civil engineering, environmental stabilisation projects, aggregate recycling and many more.

Further UK mainland demonstrations are expected to take place in the new year. More information can be found at www.rapidinternational.com.



www.hub-4.com/directory/5066



Miller - investment in four robot welding cells to optimise capacity during busy trading periods

Miller's million pound UK factory investment

Global earthmoving attachments specialist, Miller, has invested almost £1.5 million overhauling its UK manufacturing plant.

The substantial investment has focussed largely on three key areas - productivity, service level and lead time reduction, which centralised on competitive bucket manufacture. This will ensure that the industry will continue to be serviced by a UK company with an absolute commitment to maintaining the highest standards of bucket manufacture here in the United Kingdom.

Following the initial investment this summer, some areas have already seen a significant increase in productivity; this is set to increase further as three additional new robots will be installed in the factory before Christmas.

The implementation of the latest robotic equipment to optimise capacity during busy trading periods, two plasma cutting machines and a dynamic parts storage system designed to increase manufacturing productivity are just a few of the improvements that have been made. This, coupled with planned stock building during quieter periods, ensures industry leading availability is guaranteed on all fast moving products.

To ensure the business remains a leader in groundbreaking products designed to meet customer needs, Miller continues to invest in research and development for both the home and overseas markets, providing a wide range of innovative products suited to an ever-changing global market.

Mike Askew, managing director at Miller, said: "This initial investment, which is part of a major long-term plan designed to guarantee that we can continue to provide high quality, competitively priced attachments. It demonstrates our commitment to manufacturing in the UK. Continual investment in our product range and manufacturing processes is vital to ensure we're able to meet the needs of our customers while remaining competitive in a global marketplace.

He added: "We're looking firmly ahead now and by creating a lean and efficient manufacturing process, we are confident that we're ready to tackle any future challenges head on."

 www.hub-4.com/directory/570



New addition to the Hewitt Robins team

With a recent growth in business in the last 12 months, Hewitt Robins International has strengthened its already successful team with the recent addition of Peter Lockwood.

Peter has joined Hewitt Robins as a Sales and Spares Administrator. He has over 9 years' experience within the industry having spent time in aggregate & asphalt sales with major blue chip companies.

His sales and customer service abilities will be an asset as Hewitt Robins look at expanding and growing sales around the world.

About HRI:

Hewitt Robins International Ltd has been supplying vibrating equipment for over 100 years to a wide range of industries all over the world. The company have developed wide range of vibrating screens and feeders for the quarrying, mining, recycling, iron, steel and foundry industries. Their product range provides an extensive selection of vibrating equipment including all types of vibrating screens, vibrating feeders, vibrating grizzly feeders and foundry equipment

 www.hub-4.com/directory/1901

New Hercules HT182C heavy duty trommel launched



Stelex Construction Equipment Limited, the worlds' only supplier of the original 'Hercules' range of heavy duty trommels is pleased to announce the launch of the new HT182C heavy duty trommel as part of their standard product range.

The HT182C gives an extra choice to the customer looking for a heavy duty trommel at a reduced cost. The HT182C uses a chain drive system for the barrel rotation in place of the standard 'live drive' system that was introduced back in 2005. The 'live drive' system has been a huge success and extremely reliable but the reduced cost of the chain drive will hopefully make it an attractive alternative to customers on a tighter budget while still seeing the benefit of a heavy duty trommel.

The company is committed to continuous product development and the HT182C includes many of these improved design features to ensure customers of the reliability and efficiency that they have come to expect.

The HT182C still maintains the 'heavy duty' tag and offers a range of hopper options, product chute options and barrel options to suit the customers project requirements. The trommel is designed to be mounted on concrete walls or on a steel frame.

The HT182C is perfect for all rip-rap, armour stone, cleaning and sizing projects.

The length of the barrel can be designed to suit the project and the number of products required.

Chutes can be added under the trommel to separate the products or to feed a conveyor for example.

The reciprocating feeder is designed to prevent 'bridging' of large stone sizes and also prevent spillage. Liner plates are fitted to extend the life of the machine.

Access is provided to the rear of the machine and also for routine inspection of the barrel rollers.

'We moved away from the traditional designs of the trommel to include important changes that improve the operation and also keep the machine at the right market price. It was clear that some customers still wanted the option of a chain drive system over the newer 'live drive' system and now they have that option'.

With the quarry industry still not back at the levels before the financial crash it is necessary to offer more machine options to the customer who is looking to maximise their existing quarry reserves or has a new rip-rap type project.

'Customers are keen to get everything they can from their existing reserves and a trommel can definitely help to minimise waste and produce an extra income. Customers also want to fulfil their sustainability obligations for the future'.

The options are limited for a machine that can handle large input sizes and large product sizes at high tonnages but the HT182C can achieve both of these.



www.hub-4.com/directory/11736

An EcoHog Windshifter & HogMag Working Together For
Optimum Results



SPECIALISTS IN AIR SEPARATION AND METAL RECOVERY



CONTACT US:

Warwick Ward (machinery) Ltd
Blacker Hill Sidings
Blacker Hill
Barnsley
S74 0RE

T: 01226 747260

E: ecohog@warwick-ward.com
www.warwick-ward.com

Ecohog Ltd
www.ecohogwindshifters.com

ABOUT ECOHOOG

Ecohog are a family owned waste equipment manufacturing company operating on a global scale, with over 20 years experience supplying equipment to the waste and recycling sector. Through extensive market research, research and development and concept design in finding waste sorting problems Ecohog have developed the Ecohog Windshifter and HogMag Eddy Current Separator, the most efficient separation technology in today's market.

Why an EcoHog Windshifter?

- Mobile hook loader unit for ease of movement around or between sites
- Integrated vibrating pan for controlled infeed material
- Precisions settings to suit application
- Integrated fold down conveyors suitable for heavy materials and de-stoning
- Hydraulic powered to raise and lower machine and conveyors
- 99% separation efficiency depending on material
- Protects other equipment in processing cycle eg shredders
- Low maintenance & operational costs
- Low dust emission due to controlled and recirculated air flow
- Easily integrated with existing systems
- On board Generator optional

Why a HogMag Eddy Current?

- Mobile hook loader unit for ease of movement around or between sites
- Integrated vibrating pan for controlled infeed material
- 3 integrated stockpiling conveyors
- High throughput
- Hydraulic powered to raise and lower machine and conveyors
- Heavy duty abrasion resistant belts
- Sealed shell bearings
- Low maintenance
- Low operational costs
- Easily integrated with existing systems
- On board Generator optional

KUBOTA launches a new range of wheel loaders

Held at the Heart of England Conference Centre in Warwickshire, Kubota invited the UK's press to take a close look at their new range of wheel loaders and tracked carrier products. In the medium wheeled loader range the focus was on the new R065 and R085 models. This is the first time that Kubota have launched a range of wheel loaders to the UK market in the company's history.

We took a closer look at the R085. The R085 is powered by a robust Kubota-built 62.5 PS diesel engine. The eco-friendly engine is fitted with a diesel particulate filter (DPF) muffler, complies with Stage III B regulations for exhaust gas emissions, and features low noise, low vibration, and low fuel consumption. As always, security is paramount. A key based anti-theft system keeps the R085 secure when you're not around. The all-new designed cabin features a fully enclosed glass to improve visibility in all directions. The full-glass left-side door and wide-opening right side window provide clear views of the conditions outside. The rear of the cabin features rounded glass corners that, combined with the sloped bonnet, provide excellent visibility when reversing. Up front, a wide view and a redesigned Z-bar linkage configuration give you unobstructed views of the pallet fork tips from the driver's seat.

A full-size, full-suspension adjustable seat enhances operator comfort. The padded seat can be moved forward or back for optimum comfort. With the flick of a lever, the steering wheel can be tilted up or down to the most comfortable and efficient position for drivers of all sizes. More than just a place to put your arm, the right-side wrist rest is an important factor in comfort during wheel loader operations. It reduces fatigue by reducing arm movement and allowing you to more easily operate the hand lever. A long dumping reach and high dumping clearance make all types of dumping jobs easy. The long dumping reach and high dumping clearance lets you dump into truck beds with ease, while the long dumping reach makes pallet fork operations faster and more efficient.



Servicing the Kubota R085 is a snap, helping to reduce downtime and maintenance costs and letting you get back to work as quickly as possible. The engine bonnet at the rear opens wide, providing quick and easy access to the machine's main service areas. Items that require routine maintenance and service, such as the dual-element air cleaner, engine oil refill, fuel filter, and water separator are within easy reach for fast and simple servicing. Quick-open panels on the right and left sides provide speedy access to the fuel refill (right side) and battery (left side). Other areas of the R085 are also easy to service and maintain.

For more information visit www.kubota.co.uk



www.hub-4.com/directory/488

Terex® Finlay to unveil NEW I-140 impact crusher at Bauma 2016

The NEW Terex® Finlay I-140 direct drive 1270mm x 1240mm (50" x 48") horizontal impact crusher with variable speed gives operators unprecedented levels of production in both recycling, mining and quarrying applications. The robust and proven Terex® CR032 chamber gives excellent reduction ratios and high consistency of product shape.

A significant engineering approach being introduced in this model is the material flow through the plant. The flow of material has been significantly improved by increasing the width of components as the material moves through the machine.

The machine features an advanced electronic control system that monitors and controls the speed of the rotor and regulates the heavy duty vibrating feeder (VGF) with integrated pre-screen to maintain a consistent feed of material into the impact chamber for optimal crushing conditions. Material from the integrated pre-screen can be diverted to a stock pile via the optional by-pass conveyor, or it may join the crushed product on the main belt. The standard hopper capacity of 6m³ (7.5yd³) places the machine at the forefront in this competitive market sector.

"The introduction of the Terex® Finlay I-140 represents a significant step change in our family of impact crushers. Our



field test results of extensive testing have recorded significant productivity increases depending on the application, over the model that it replaces. The enhanced material flow process of the plant represents a significant step change to our engineering ethos and in due course will be extended to encompass our range of impact crushers" said Alan Witherow, Product Manager.



www.hub-4.com/directory/305

Key Features:

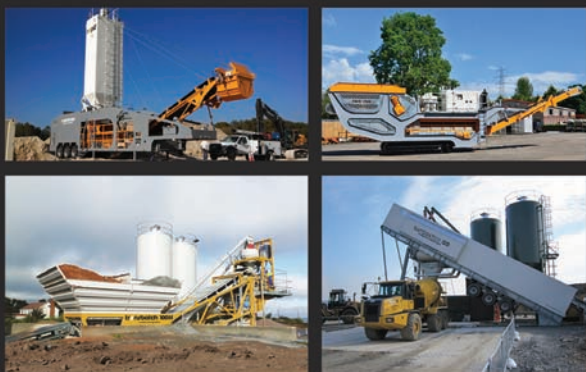
- The ease of material flow through the machine has greatly improved.
- Hydraulic apron setting assist provides convenient and efficient adjustment of the aprons.
- Full hydraulic assisted apron setting features makes adjustment of the aprons convenient and efficient
- Heavy duty vibrating feeder (VGF) with integrated prescreen removes dirt fines and sizes bypass material for reprocessing.
- Optional under crusher vibratory plate feeder with wear resistant liners aids material discharge flow.

Exhibiting at:
UKCS 2016
The UK CONCRETE Show
Wednesday 17 & Thursday 18 February 2016 Hall 5, NEC, Birmingham
Stand #B34

rapid

A PRODUCT FOR EVERY PROJECT

UK's Leading Mixing Technology
Experts Since 1969



RAPID INTERNATIONAL LTD. 96 Mullavilly Road, Tandragee, County Armagh, Northern Ireland, BT62 2LX. T: +44 (0)28 3884 0671. E: marketing@rapidinternational.com



Valley Spring is a member of the Springmaster® Group

**SPECIALIST PRODUCER OF MEDIUM AND LARGE
DIAMETER COMPRESSION, EXPANSION
AND TORSION SPRINGS.**



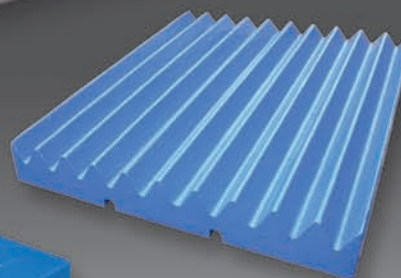
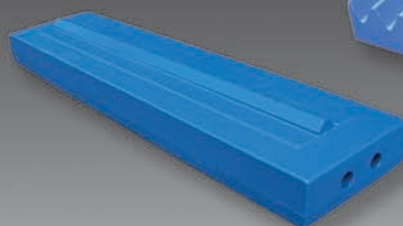
Pottery Lane East, Chesterfield, Derbyshire S41 9BH
Tel: +44 (0)1246 451981 Fax: +44 (0)1246 454327
E-mail: sales@valleyspring.com www: <http://www.valleyspring.com>

crusher spares ...



THE QUEEN'S AWARDS
FOR ENTERPRISE:
INTERNATIONAL TRADE
2012

Europe's leading aftermarket manufacturer and supplier of precision crusher spare parts and premium manganese wear parts for the Quarrying, Demolition and Recycling Industries.



Ccms
Ccepcor™

Crusher Manganese Steels Limited

Vulcan Way, Hermitage Industrial Estate, Coalville,
Leicestershire, LE67 3AP, United Kingdom.

T. +44 (0) 1530 817 000

F. +44 (0) 1530 817 111

E. sales@cmscepcor.com



The Genuine Alternative

www.cmscepcor.com



HARDOX - only by SSAB

Hardox is a registered trademark for quenched, and quenched and tempered steels produced by SSAB.

Originally Hardox was only available in plate form in thicknesses of 3.2mm and upwards, and was only produced in Oxelösund, Sweden.

Hardox is now also available from other SSAB manufacturing sites in Sweden and the SSAB facility in Mobile, Alabama.

Hardox is also available as round bar, tube and in thinner gauges.

As Hardox is a registered trademark, the use of the name should only be used when referring to steels produced by SSAB. Make sure that when you are being offered Hardox, that it is the genuine article.

How can I be sure that I am being offered Hardox?

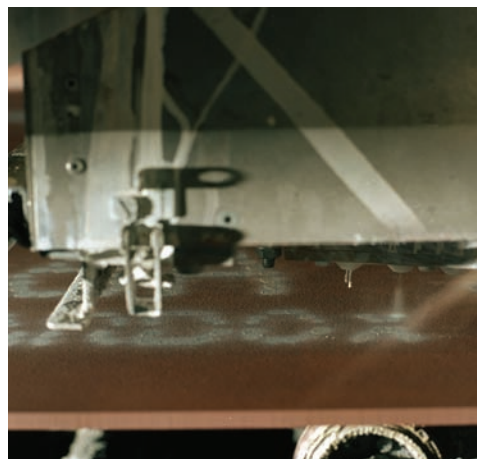
- Confirm who the manufacturer is.
- Ask to see a mill certificate.

If I see a mill certificate, what do I look for?

- Name of manufacturer: SSAB
- Product description

SSAB												Page: 1 (7)
SSAB EMEA AB, SE-411 89 ÖXELÖSUND, Sweden												
Inspection certificate EN 10204 - 3.1	A02	Issuing department Quality inspection	A03	Purchaser order no.	A07	Our order no. XXXXXXXX	A08	Invoice no.	A10	Certificate on and date XXXX-XX-XX / 2016-01-01	A03	
Purchaser	A11	Product Abrasion resistant steel plate	B01	Marking (Drawing) Steel grade, Manufacturer, MATERIAL ID					B06	Standard(s) EN 10204:430	B02	
Company name delivery note or date		Quantity B08 1	Dimensions [mm] T 4 W 2500 L 8500	B05-B11 E09	Weight [kg] G09			B12	Dish. Code B04 XXXXXX	Internal code XXXXXX	B16	
		Consignor Company name and address		A06	Customer marks XXXX						B15	
MATERIAL ID T14571-333401											B07	
Chemical composition										C71-C82	Carbon equivalent CEI-CR CIV (Wt%)-C (Mn) + C (Pb)+Mo+V+N + (Nb+Ti) C14 + CEI + C = (Mn/Mo)/N + (DIN-DIN2) (H&N)	
Heat no T14571	H6	C	Si	Mn	P	S	Cr	Ni	Mo	Sr	EW	C14
	16	32	130	008	001	20	03	017	200	37	074	
Tenotype	G04	G06	G01	G02	G03	G05	G07	G08	G09	G10	G11	Test results
	Mildness	Specimen position	Direction	Treat-ment	Specimen type	Temp [°C]						
Hardness test (HRC)	H0506	Fall end		Delivery condition							C32	
											A47	
Customer article no: XXXX												

	It is hereby certified that the material 202 described above complies with the requirements of the order.		This certificate is produced with ESP - 201 and valid without signature	A21	 www.harden.com
	Quality Inspection Department / R Tscherngöppel / A Badstuber				



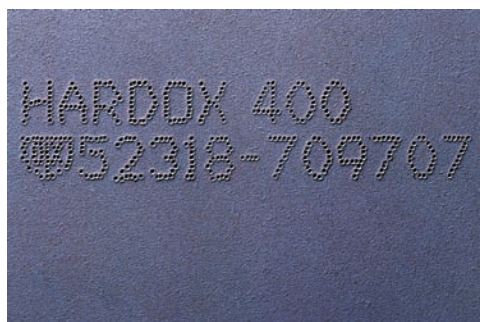
In addition there are ways of identifying the actual material.

All wide plates have a unique number

The plate number.

Each plate produced by SSAB, has a unique number.

- This consists of a heat number followed by a plate serial number e.g. 12345 - 123456.
- Each plate is marked with this number either with white paint or black ink jet.
- This number corresponds with the number on the relevant mill certificate.



- Plates over 5mm thick are also hard stamped with the grade and plate number, and is placed at right angles to the rolling direction in the corner of the plate, to be found between 2 white dots, if marked with white paint.
- The plate number allows for full traceability to the production route, day of production and the customer.

ent ction		A05		Purchaser order no		A07		Our order no xxxxxx -xxx		placed at right angles to the rolling direction in the corner of the plate, to be found between 2 white dots, if marked with white paint.		A08 Invoice no		A09 Certificate no and date xxxx 2016-01-01							
product Abrasion resistant steel plate				B01		Marking (Stamping) Steel grade, Manufacturer, MATERIAL ID				• The plate number allows for full traceability to the production route, day of production and the customer.				C06 Standard rules OX HARDOX 450 Steel grade HARDOX 450							
uantity		B08		Dimensions [mm] T 4 W 2500 L 8000				B09-B11		Weight [kg] 628				B12		Deliv. Cond. Q		B04		Internal code xxxxxx	

How to identify Hardox tubes.

Tubes have a white ink jet marking with the brand and dimension. The number is a combination of the heat and the production sequence.



How to identify Hardox bars.

The bars are marked with SSAB "steelgrade" "dimension" and "id which starts with SSW.

For example "SSAB HARDOX400 70 mm SSW123456"

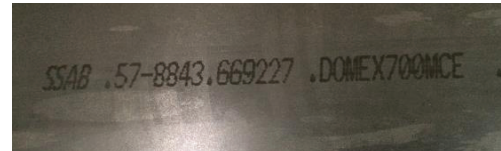


How to identify Hardox in thinner gauges, maximum 1500mm wide.

This material can be identified by:

- Manufacturer: SSAB
- Heat or cast number: e.g. 57-8843
- Coil number: e.g. 669227
- Product name: e.g. Domex 700MCE, (or as HARDOX450)

There are a number of features which tend to distinguish Hardox plates from other brands of wearplate.



Are all Hardox plates supplied with red primer?

All Hardox plates supplied through SSAB stocks for general sale are supplied with a low zinc red primer suitable for outside storage up to 6 months. For customers ordering direct from production it is possible to specify material without primer. All material will have the relevant markings.

Is Hardox only produced in stock sizes?

It is also possible to purchase bespoke dimensions direct from production, subject to a 3t minimum order per dimension.

What is Hardox Wearparts?

This is a network of customers who specialise in making parts from Hardox, and as such deliver certain guarantees linked to the material used and their capabilities. There are over 150 such companies worldwide of which 10 are in the UK.

How many grades of Hardox are there?

There are 7 grades of Hardox from 400 up to Extreme. The number designation is the hardness in Brinell. There are 2 grades that do not have a number:

- Hardox HiTuf is produced in thicknesses over 40mm, where toughness is a priority in applications such as demolition shears and thick bucket edges. It has a hardness of around 350 HBN.
- Hardox Extreme has a hardness of around 60 HRC (Rockwell) which is off the Brinell scale.

Availability.

Hardox is available from over 30 SSAB controlled stocks around the world, as well as supply direct from production. Contact information for the relevant countries is available on www.ssab.com.

SSAB will continue to develop new and existing grades. The Hardox 450 that you buy today will not be same as the one from 10 years ago. The steel today is cleaner with improved toughness, with increased resistance to cracking and easier to use in the workshop.

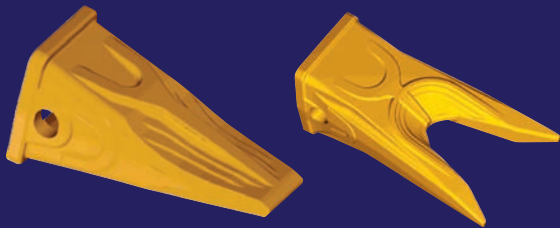
For more information visit www.hardox.com



www.hub-4.com/directory/17074

NEED NEW TEETH?

- Cost Effective direct replacement teeth available from stock
- 24/7 online ordering at www.mstpartgroup.com
- Full range of sizes & styles available.



NEED URGENT ASSISTANCE?
CALL 0845 838 0706



UK sole authorised distributor



Producing manufactured sand with HPGR high-pressure grinding rolls

The Brazilian Incopel quarry is turning excess gravel to a profitable product: manufactured sand.

The most consumed construction material in the world is concrete. Sand - one of its components - represents 30% of the volume. The extraction of this raw material, however, faces strong environmental constraints, especially in metropolitan areas.

In the case of Incopel, located in Estância Velha, in the metropolitan area of Porto Alegre, Brazil, the subject is more than current, and the company decided to invest in the production of manufactured sand.

Two years ago, the company faced a production excess of gravel with particle sizes of 7/8 and 3/8. With customers consisting of construction companies and concrete artifact manufacturers, Incopel identified a business opportunity. Due to the limitations of natural sand extraction in the region, the price of this raw material has risen from R\$40 / m³ to R\$100 / m³.

"We were evaluating how to use the excess of 7/8 and 3/8", explains Jorge Felipe Gewehr, director of Incopel. "But the combination of environmental restrictions on the exploitation of natural sand with the consequent increase in price made us decide on the installation of a manufactured sand production plant," he summarizes.

Relying on HPGR technology

With the decision, Incopel evaluated several alternative techniques, deciding on the activation of a unit consisting of Metso's HRC™ 800 High Pressure Grinding Roll (HPGR), combined with a Nordberg® TS3.3 banana screen. "It is a vision that is starting to become real thanks to the quality of the final products and customer evaluation," explains Gewehr.

Started in May 2014, the new unit is fed by a mix of 7/8 gravel (70% of volume) and 3/8 gravel (30%). The material transported by 18-ton trucks travels 200 meters to the feeder opening that supplies - via conveyor belt - the HRC. With a nominal capacity of 120 tons / hour, the equipment can have its settings (pressure and speed) quickly changed. Pressure adjustment directly influences the final particle size, while speed influences the amount of material processed by the crusher.

The energy efficient HRC 800 consumes on average about 48% of the power provided by two 150 cc engines, sending the crushed material to a TS3.3 screen with three decks, which runs classification as specified in the project. In trials, Incopel has reached production peaks of 126 tons / hour. This corresponds to a consumption of 0.84kW / ton of final product in the crusher. With elliptical motion, this screen is characterized by excellent stratification and high screening efficiency. Due to its decreasing transport speed (not continuous as in conventional equipment), the unit submits

the crushed product to classification where time and surface are greater resulting in a selection of particles with similar sizes.

Metso laboratory provides support

The Incopel plant produces three final products. The first is 1/2-inch gravel used to manufacture concrete poles and road paving. 1/4 gravel is the second classified product used mainly to manufacture concrete pipes for basic sanitation and in the concrete artifact market such as interlocking blocks. "With the advantage of saving cement, according to my own clients," adds Gewehr. On the other hand, manufactured sand, the third product, supplies the concrete producer market, and tube and concrete manufacturers, among the main segments.

The definition of the three products manufactured in Incopel's new line not only involved the company's own knowledge, but also Metso crushing laboratory resources, located in Sorocaba, São Paulo. In addition to basalt mined by the quarry, Metso technicians evaluated the initial mixture feeding the HRC 800 and the three final products. The result was a graph showing the particle size in the classification stage.

Operationally, the line is controlled by a single professional. Alexandre Erthal, who has been working for Incopel for 15 years, is responsible for equipment activation, HRC 800 and screen inspection and system controls. The brain of the process is the control center, enclosed in a concrete room with windows. It is from there that Erthal triggers the circuit and monitors the indicators from the plant via a touch screen.

"It works like a cell phone screen. It's easy and intuitive", he says. Today the biggest concern is the inspection of the conveyor belts that transport the crushed material, mainly the roller alignment. "Noise is minimal," he adds.

Better concrete consistency

Jorge Felipe Gewehr identified the potential market of manufactured sand, but the proximity of the demand was a surprise. A neighboring concrete producer is the most active customer, purchasing four trucks a day of manufactured sand for the production of concrete pipes and interlocking blocks used in the installation of floors. "He complained about natural sand inconsistency that led to the production of concrete with highly variable strength," explains the director of Incopel. Since the adoption of manufactured sand, the customer, and neighbor, praises the consistency in particle size and cubicity, factors that increase concrete strength.

Even more surprising was the evaluation of another buyer focused on the acquisition of 1/4 gravel. When visiting the HRC 800 line, he picked up a handful of gravel and amazed by its quality, summarized: "This material is pure gem".

TESAB

Engineered for Power. Built to Last.



Phone: +44(0)2882 252781

Email: sales@tesab.co.uk

Web: www.tesab.com

Contact: **Paul McGoldrick**
07710 058066
paul@crushers4sale.com

Crushers/Screens/Conveyors Available in Stock
Hire/Lease/Buy Options Available
National Sales & Service Support

1012TS Crushing Primary Rock



TS1860 Screening Sand



13042T Stockpiling Iron Ore



CLEARER SOLUTION TO WASHING

FOR OVER 55 YEARS

Bruce Engineering Services (NI) Ltd.
33 Lindsayville Road
Cookstown, Co. Tyrone BT80 8UH

tel: +44 (0) 28 8676 3684
email: sales@bruce-eng.co.uk
web: www.bruce-eng.co.uk
www.hardoxireland.com

UK Distributor
SCG Supplies Ltd

Paul Thorne

mobile: 07711 224181
tel: 01698 828683
email: sales@scgsupplies.co.uk

BRUCE

MATERIALS PROCESSING SOLUTIONS

› FEEDING/SCREENING/WASHING/RECYCLING/ENGINEERING/WEAR PARTS

Filter division benefits from productivity evaluation

SN Engineering like to consider themselves as a dynamic client focused company specializing in the dry bulk materials handling sector. Over the years, their filter division has enjoyed a remarkable growth & loyal client following.

Although over this period of substantial growth, only small tweaks & various enhancements had taken place across the range of in-house designed & manufactured units, however we are always looking at ways to improve the assembly staff &/or client interface. This need for greater appreciation become more emphasized & focused when Q4 of 2015, alone, saw filter order intake surpass the £1/2m barrier. The directors immediately instigated & fast tracked an evaluation process across all aspects from conception to arrival @ site. In tandem with the in-house appraisal, implementation of a detailed & targeted survey with existing clients also ensued.

£0.5M+ ORDER INTAKE . . .

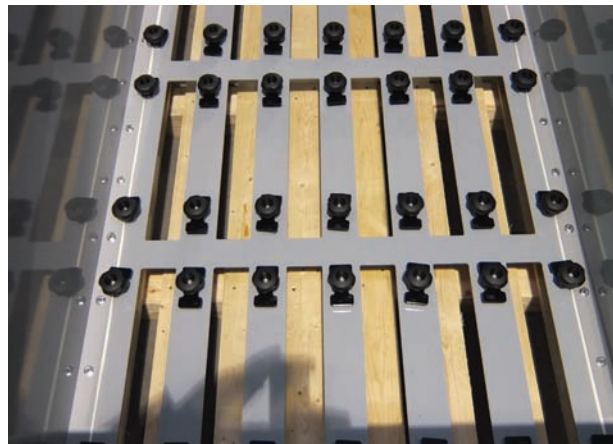
With order intake, in the past 3 months alone, for our well respected filter range surpassing £0.5m the need to evaluate improvements to manufacturing & assembly times became even more focused than ever. With detailed consultations with all in-house departments, and existing client feedback taken into account, it became apparent certain areas needed re-designeering.

Some, relatively small, time saving aspects that could aid in reducing total lead times thus aiding in achieving some tight client timeframes on some orders were highlighted & implemented. However, one area that stood out from all the rest and influenced by feedback from existing users, was that of the cell clamping arrangement.

“ . . . extremely impressed with the overall robustness of SN filter units, but changing the filter cells can be quite time consuming, especially on our larger units . . . ”

Having carried out a true timeline for the manufacture & assembly of the cell plate alone, of a medium sized unit (18), and then combining with actual on-site timeline for full change over some datum's were set. Engineering were then tasked with designing a new system that could dramatically reduce the manufacturing & assembly timeline and also offer the clients an improved operating experience yet without compromising durability & robustness that are the bywords of SN filter units.

Having evaluated various proposals, and in consultation with the cell manufacturers, a new design was approved for trial. With manufacture of the new design cell plate initiated and a side-by-side assembly trialed, the net result was a time saving of 64%. Next was a site trail, again, a relative time saving of 58% was achieved. On the right track and with a few minor changes - primarily to make the new design toolfree - implementation & roll out of this new design across the full range was approved. 1st builds are well under way and all units supplied from Jan 2016 will incorporate this new design. A noticeable difference in shop floor productivity is being witnessed.



Everything has the potential to be improved upon!!

Q: How can you improve manufacturing & build times?

A: Identify areas of slow productivity, re-evaluate and if possible design out cause.

Q: How can you improve client experience?

A: Identify areas of concern from user's perspective, re-evaluate and if possible design out.

“It's all too easy to sit back and enjoy the fruits of your labour, especially when those labours' have resulted in a product that is extremely well received and is recording good & steady sales growth, from repeat & new clients . . .SNE”

Not true, really, are you sure!

Companies should ensure that they carryout regular evaluations of their production program and carryout detailed & specific Q & A's with clients using their equipment. Only then, can you have a true picture throughout the process and make changes where possible to further improve the overall experience.



www.hub-4.com/directory/16525

Developing our product range in partnership with our customers

That's how we make the big difference, the Metso Way.

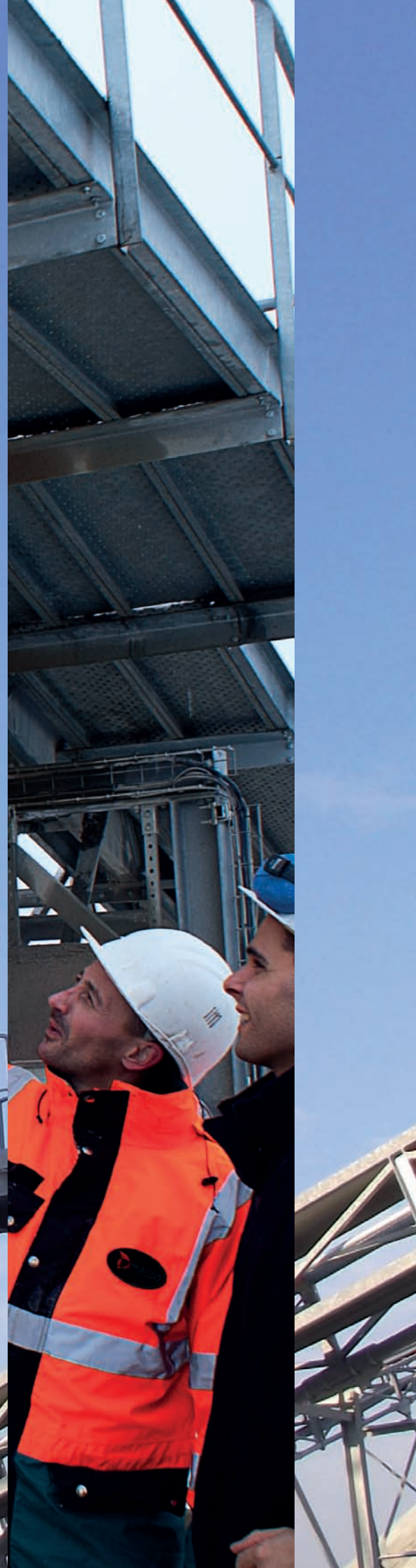
Metso offers a full range of robust and reliable screens including the ES high-energy elliptical motion screen and the CVB inclined circular motion screen. Working in partnership with our customers we have continuously developed our range to provide maximum performance, easy and reliable operation, maximum operational flexibility while achieving safe and simple maintenance.

Find more about our two screen series at metso.com/screens

#TheMetsoWay



Contact us at +44(0)1788 532100 or
minerals.info.uk@metso.com



The new Volvo A40G's bring rationalisation and increased production at Paterson Quarries' Burrowine Moor facility

Volvo A40G's increase production at Patersons Quarries Ltd

Three new Volvo A40G articulated haulers have been supplied to Patersons Quarries as production output is increased at the Company's Burrowine Moor Quarry located near Bogside in the Kingdom of Fife.

The trio of A40G haulers replace two five year old A35F's and an A30E bringing fleet rationalisation and a significant increase in production output to the Burrowine facility. "Over the years we've had a good experience operating Volvo articulated haulers in our quarrying and landfill operations and their pedigree is sound in terms of reliability and performance with good residuals when it's time to trade," comments Managing Director Tom Paterson. "We have high expectations for these latest A40G haulers from Volvo as they take over at Burrowine Moor Quarry."

Besides their main duty of hauling silica sand from the dig zones in the quarry to the processing plant, the new haulers will also be utilised to move overburden and rock as fresh seams of material are exposed ready for extraction. All three A40G's have been supplied complete with Volvo's Silver Customer Support Agreements that provides Patersons Quarries with a tool to budget for and track, with full visibility, the running costs of each truck. Regular reviews with Volvo's local support centre at Stirling ensure each machine is monitored to ensure its performance is managed in a cost effective way.

With a carrying capacity of 39 tonnes and a heaped capacity of 24m³, the Volvo A40G has a maximum speed of 57kph. Powered by the latest Tier IV final Volvo 16 litre engine developing 347kW net horsepower, it features high torque at low engine speeds, resulting in good fuel efficiency, high performance, quicker engine response and less wear, i.e. long service life. The whole powertrain is designed and purpose built ensuring the best use is made of the available power and torque, even in tough working conditions. The engine in the drivetrain is matched to a torque converter with built in lock-up function and fitted with a fully automatic fast adaptive transmission. The drivetrain features Volvo's Automatic Traction Control (ATC) system as standard, which prevents operators leaving their haulers permanently set in



all-wheel drive mode, even when not needed, for example on good or paved roads, when only 6X4 drive is required. ATC automatically disengages the rear axle when not needed; eliminating tire skid when cornering and reducing tire wear. However, when ATC system does sense slippage, the longitudinal differential lock and the 6X6 clutch are engaged together: this gives the hauler the optimum traction in all conditions.

Established in 1973 with a quarry located to the south east of Glasgow, Patersons Quarries Ltd has become one of the largest independent extractive companies in the UK providing a whole range of products including sand and aggregates, recycled aggregate, and silica sand for the glass making industry. In addition the company has block and brick manufacturing facilities and ready mixed concrete plants. It also specialises in the waste handling industry with landfill and recycling sites all supported by a large comprehensive transport fleet.



www.hub-4.com/directory/876



The Bucket Dentists

MST Parts Group, a nationally contracted supplier to some of the UK's biggest companies, are fast becoming the 'go to' name for replacement wear parts for thousands of customers in the UK and beyond. With over 15,000 bucket teeth supplied in 2015, here's why the next time your teeth need some attention, MST should be the first choice for your replacement parts.



Size and Style for every application

No one knows your machine like you, but being in business since 1971, MST have 45 years worth knowledge and experience behind them to help you choose the right parts to keep your machines working at their best. Offering exclusive systems from Combi and ITR, and as authorised suppliers of ESCO systems they have the product range to match the experience. From general purpose, forestry, demolition, rock quarrying and more, MST have you covered with a wide range of range of sizes, styles and fitments from stock to suit all your application needs.

Cost Effective Caterpillar Teeth

As well as being authorised dealers of ESCO and Combi Systems, MST have a full range of direct replacement Caterpillar teeth and are proud to be exclusive UK suppliers of ITR teeth and Wear Parts. With the range topping high quality ESCO Max DRP tooth and two great ranges of ITR teeth, MST are certain to have the product in the to suit your needs. The ITR Classic design offers the perfect balance of great value and performance for increased wear life in general purpose applications. For more demanding environments, yet still offering great value, the ITR Unik tooth range is designed with a strengthened profile for increased impact strength and wear resistance to offer on average a 30% increase in wear life over the classic tooth.

Keep downtime to a minimum

MST understand that time is money, and when you suffer a broken tooth getting you up and running again as quick as possible is just as important as the quality of the parts and service on offer. With a large selection of stock, several next day delivery services available and the option to collect from depots in Birmingham, Glasgow and Durham you can choose the best way to get your parts quickly and easily.



Knowledge and Support

With such a wide range of teeth and wear parts only a call or click away, MST offer free of charge site visits from skilled local sales engineers and have an experienced internal sales team at your disposal to help identify the right product for you. With several ways to get in touch by phoning 0191 410 5311, emailing sales@mstpartsgroup.com, or the ability to buy 24/7 online at www.mstpartsgroup.com. MST offer the products, flexibility and service to match the demands the industries day to day challenges.



www.hub-4.com/directory/2334

QMS AGGREGATE PROCESSING EQUIPMENT



Delivering results, reliability & rock solid dependability



- Crushers
- Screens
- Feeders
- Conveyors
- Complete Modular Plants



CONTACT US: T. +44 (0) 1530 811 081 | F. +44 (0) 1530 510 960 | E. sales@qmsupplies.co.uk

Quarry Manufacturing & Supplies Ltd Grange Road, Bardon Hill, Coalville, Leicestershire, LE67 1TH



VISIT US: www.qmsupplies.com

KOMATSU

Call the experts® for free energy.



KOMATSU
CARE

HB215LC-2 Hybrid: It makes a difference

Komatsu's latest Hybrid excavator is a product of in house technology and of 90 years' experience in construction manufacturing. The patented hybrid components harness free kinetic energy, convert it to electricity for a powerful and quiet performance to help reduce your carbon footprint and fuel consumption by up to 40%. Unrivalled on the market, the thousands of Komatsu Hybrid excavators working around the world have logged millions of fuel-saving hours for our customers. With the HB215LC-2 Hybrid excavator, you will enjoy a new experience, and the most reliable and advanced technology in the industry today.

Komatsu. For the people and the planet.



Marubeni

KOMATSU

Marubeni-Komatsu Ltd, Padgets Lane, Redditch, Worcestershire B98 0RT
Tel: 01527 512512 · Fax: 01527 502310 · www.marubeni-komatsu.co.uk



Hewitt Robins keep the production rolling for Summerleaze

Leading manufacturer of quarry processing equipment, Measham based Hewitt Robins International - a TATA Enterprise, has recently supplied a replacement screen for Summerleaze at their Bray Quarry.

Founded in 1928, Summerleaze is a privately-owned company, whose origins are in the field of mineral extraction.

The extraction of sand and gravel has been at the core of Summerleaze's operations since its foundation and has provided the financial base for subsequent business developments. Today, the Company's principal gravel processing operations are based in the Thames Valley at sites in Maidenhead, Bray, Burnham and more recently Denham.

Over the last 80 years, sand and gravel from Summerleaze quarries has played a major part in supplying the aggregate needed for the construction of many thousands of homes, offices, schools, hospitals and roads in the Thames Valley. Over this time almost 8 million tonnes of aggregate have been processed and supplied to projects such as these.

The installation:

The new bespoke screen was supplied to replace an ageing secondary screen at the Bray wash plant. Darren Thomas, QM, commented, "We had a lot of quotes on refurbishment but in the end it made sense to invest in a new screen. We already had a very reliable Hewitt Robins primary screen installed a few years ago so we were very happy to talk to them about a replacement secondary screen."

Following a successful tender Hewitt Robins engineers visited the site and subsequently designed a bespoke retrofit Hewitt Robins LPE11 1.5m x 5.0mm single deck screen with carry deck. Two motors and two shafts ensured that no additional electrical work would be required. On-board motors allow complete access around the screen which is fitted with PPL Trelleborg screening media.



The whole project was subsequently completed and the new screen commissioned in a short shut-down period over Xmas by Hewitt Robins engineers.

Darren, further commented, "We scheduled the work for the Xmas period and allowed a couple of days for installation. Everything went very smoothly and the new screen was installed and commissioned within the time frame."

The process:

With a feed of 150-200tph/hr the primary screen splits out the +10 and +20mm material and feeds oversize reject material onto the new secondary screen where the +40mm is then recirculated back into a cone crusher and +44mm fed into a jaw crusher; all crushed material is then fed back onto the primary screen ensuring that no material is lost.

The plant which has been operating since the sixties is a busy operation processing approximately 275,000 tonnes/annum of sand and gravel for the on-site concrete plant and supplying local demand.



www.hub-4.com/directory/1901

HARDOX®
WEAR PLATE



THERE IS ONLY ONE HARDOX®

Genuine Hardox only comes from the Nordic steel company SSAB. Hardox has for more than 40 years set the standard for extreme wear resistance and extreme toughness.

You can always tell it's an original Hardox wear plate from the marking printed over every plate's surface.

The marking will also tell which steel batch it comes from, the serial number, its length, width and thickness. It's like each Hardox wear plate having its own passport. Just by looking, you know you are getting the real thing.

Learn more about the world's only Hardox wear plate at hardox.com

SSAB Swedish Steel Ltd
Suite 6, Cranmore Place
Cranmore Business Park, Solihull
West Midlands, B90 4RZ, Great Britain
T +44 (0) 121 704 7300
E sales.uk@ssab.com

SSAB



Avoiding unintended movement in plant equipment: risks and recommendations



Currently at the forefront of mobile plant equipment news is the unintended movement of machines and what can be done to reduce the risk. Mentor Training Solutions consider the risks and give their recommendations for limiting the chance of an incident.

Risks

Let's take a look at some of the hazards that can lead to unintentional operation of plant equipment.

Unintentional operation often occurs when the operator is entering or exiting the machine's cab. If they are not careful, by standing up or maneuvering around in this restricted area, operators can run the risk of inadvertently catching and activating one of the machine's controls with their body or by snagging it on their clothing. Good housekeeping is a must, here; if operators don't take care to keep their cab clean and tidy and enter/exit carefully, a simple slip could activate a control lever, or debris could roll under the foot pedals, stopping them from working to full effect.

But it's not just unintentional activation of the controls that we need to watch out for; it's possible for intentional operation to lead to unintended movement. Imagine an untrained or newly trained operator of a 360 excavator working from a stable operating platform. Unfamiliar with the nature of the machine, they might slew 180 degrees, then mistakenly believe they are going to track backwards but, in fact, track forwards, putting themselves (and others) at risk of a falling machine.

Even experienced operators are sometimes prone to using machine controls in a dangerous manner, whether it's due to complacency, tight deadlines or ignorance of the risks. Shortcuts and lapses in concentration breed bad practice and any kind of distraction, whether it be using a mobile phone, tuning the FM radio or setting the machine controls whilst driving, presents a real risk of unintended operation.

Recommendations

So how do we reduce the risk of unintended operation? Well, numerous safety devices and procedures have been devised to reposition, guard or deactivate machine controls. These can offer a useful way to limit the risk but it's important to ensure that any additional levers etc don't present the same risk of unintended operation as



the controls they were installed to protect.

The danger is that operators may become reliant on technology to keep them safe. It's important that we don't class 'unintentional' operation as 'unavoidable'. There is plenty we can do to help reduce the risk, and we don't need to rely solely on additional devices. We can proactively limit our operators' chances of an incident by targeting their skills, knowledge and behaviour - raising awareness, eliminating complacency and ensuring they are provided the right level of support.

A lack of responsibility for safety, combined with the repetitive nature of tasks operators are often required to complete during a shift, can lead to complacency and reduced concentration, as the job becomes second nature and deadlines loom. Whilst efficient operations are obviously a top priority

for any business, it's vital to ensure that they don't come at the expense of safety. The two can co-exist. By ensuring that our operators are properly trained, we can help avoid unnecessary accidents.

To be effective, training provided should cover 3 elements: basic, job-specific and familiarisation. This ensures that operators are equipped with the relevant skills and knowledge to safely carry out their role on their machine, in their working environment. Training plans should also include regular refresher courses to reinforce key fundamentals and ward off any bad habits, and additional guidance should a change in controls, processes or job roles occur.

In addition to training, we mustn't underestimate the importance of providing operators the right support. And this is where you come in. Raising awareness is a great start but it's the role of the manager or supervisor to ensure that this remains at the forefront of their minds throughout every shift. Managers need to be able to identify the pressures on their team and be confident enough to recognise and rectify bad practice should it occur. This will help achieve the kind of long term change we're aiming for.

And if the worst does happen, operators must be encouraged to report any accidents or near misses because, with all the facts, the severity of the issue can be demonstrated and given the attention it deserves. That way we, as an industry, better protect ourselves in the future. For further guidance, contact Mentor on 01246 555222.



**Available
early
February**



**With over 12,000
hydraulic components
inside, it's the only
little black book you'll need**

Pre-order *your copy now:*

online www.stauff.co.uk

email publications@stauff.co.uk

or call **your local sales office:** Sheffield 0114 251 8518

Aberdeen 01224 786166

Ireland 02892 606900

Southampton 023 8069 8700

PRODUCT CATALOGUE



The New QE241 - Compact in design yet big in capability

Sandvik Construction is expanding its range of scalpers with the launch of the new QE241 heavy duty scalper. Compact in design and easy to transport, you will benefit from the same outstanding, user-friendly features from our Premium range of scalpers, yet in a smaller scale version.

We have developed the QE241 based on customer feedback. Although targeted primarily at the European market, it will be the ideal solution for our smaller end users where performance, versatility, transportation & setup times are most important. The QE241 also benefits from Sandvik's long history of mobile scalper development as well as sharing common characteristics from its larger siblings including a two way split configuration option and sequential start-up.

Capable of scalping before or after a small crusher, the QE241 features a heavy duty variable speed belt feeder and a highly aggressive 11' x 4' / 3500 x 1240 mm double deck screenbox. This offers the largest scalping area in its class, which combined with the banana-type bottom deck arrangement, will provide a highly effective and efficient screening solution like no other. The impressive 1200 mm / 47" wide conveyor can handle the toughest oversize material and two hydraulically folding side conveyors handle the fines and midsize products.

With a wide choice of screen media available, the QE241 offers customers a highly versatile unit which can be configured to suit the specific requirements of the application. Its robust chassis has been designed to be compatible for two-way or three-way split versions, a unique feature in this product category.

The safety and comfort of use is of paramount importance for our operators. A key benefit to our customers is the easy to use control system and user interface with sequential start, a common feature across our 1 Series screens and scalpers. The model also comes with two speed tracking which helps to reduce travel time between jobsites.

Designed for ease of transport, the 17,500 kg / 38,580 lbs model comes complete with hydraulically folding tail and side conveyors, together with a rigid one-piece hopper for quick set-up times. These features, combined with its compact footprint make it ideal for contractors requiring the need to travel quickly from site to site.

Ease of maintenance is ensured through the hydraulic jack up facility on the screen box, also common with its larger siblings. This allows easy access to the bottom deck for service and screen media changes.

Key customer benefits include:

- **Ease of mobility** - Its compact footprint means it is easy and economical to transport. Two speed radio remote controlled tracks for faster relocation between sites
- **Massive throughput** - Wide oversize conveyor with variable speed to handle more oversize product
- **Ease of operation** - Unique color-coded control panel with one touch start/stop
- **Versatility** - Choice of different screen media available for different applications. Compatible for 2-way or 3-way split configurations
- **Ease of maintenance** - Screenbox jack-up facility with easy access to bottom deck media
- **Massive stockpiling capacity** - Integrated hydraulic conveyors
- **Safety** - Fully compliant with current safety regulations
- **Highly efficient** - Machine designed for efficient fuel economy, and low operating costs

Key Dimensions

Screen Size	3500 x 1240mm / 11' x 4' (4.3m ² / 44 ft ²)		
Engine	CAT C4.4 Acert 74 kW / 100 hp (Stage 3A / Tier 3) CAT C3.4 55 kW / 74 hp (Tier 4 final / Stage 4)		
Hopper Capacity	4.2m ³ / 5.5yd ³		
Transport Length	9.98m / 32' 9"	Working Length	12.23m / 40' 1"
Transport Height	3.1m / 10' 2"	Working Height	3.9m / 12' 10"
Transport Width	2.5m / 8' 2"	Working Width	14.5m / 47' 7"
Estimated Weight (Standard)	17,500 kg / 38,580 lbs		





NEW QE241 SCALPER BIGGEST SCREEN SIZE IN ITS CLASS

Understanding your needs and requirements has helped us develop the latest addition to our heavy duty scalping range. Our new QE241 features a massive 11' x 4' / 3.5 x 1.24 m double deck screen box, the largest in its class, to increase screening efficiency and maximize your throughput. Compact in design and easy to transport, our new QE241 will offer you a highly productive, versatile and user-friendly mobile scalping solution like no other.

Bigger is better, so don't compromise on productivity!

Call a member of our team:

UK: +44(0) 1283 818400 IRL: +44 (0) 28 8556 7799

info.smcuk@sandvik.com

CONSTRUCTION.SANDVIK.COM



40 years of abrasion resistant linings from ARL

Applied Rubber Linings (ARL) have been supplying abrasion and chemical resistant rubber linings to UK and overseas industrial customers for forty years.



Within the mining, quarrying, aggregates processing, materials handling and waste recycling industries we provide high quality abrasion resistant linings and coatings from 3mm to 50mm thick. Items that we rubber line for many different industrial customers include slurry pipes, sand washing plant, mixing tanks, conveyor chutes, discharge buckets, separators, cyclones, wear plates, trommels, dredger pipes, paddles and mixers.

A valuable and cost effective part of our service at ARL is the relining of used plant and equipment. Rubber lined pipes, cyclone parts, chutes and tanks etc can all be relined, and metal repairs can be included at the same time to provide fully refurbished equipment at a fraction of the cost of new.

For further information call Robert Travell on 01452 381849, or Keith Travell on 01628 762716, or email keith@applied-rubber.co.uk



www.hub-4.com/directory/16029

CQMS'17 - bigger and better



Following the highly successful launch of CQMS - the Construction & Quarrying Machinery Show - in 2015, work is now well under way on CQMS'17. The show will take place at Molloy's Quarry, Tinnycross, Tullamore, Co Offaly on April 21st and 22nd 2017 and will be the ideal event for machinery users and buyers to view the widest range of the latest equipment working in authentic surroundings. With over 40 stands already booked the 2017 show is already promising to be bigger and better than the inaugural event with the organiser making more space available for an expanded line up of top brands and their dealers.

CQMS was launched by Machinery Movers Magazine in 2015 to meet the Irish industry's requirement for a trade event where prospective buyers could check out construction and quarrying machinery in its natural environment. The response to the first event was overwhelmingly positive with a large number of exhibitors signing up for the 2017 event before the 2015 show closed.

More details at: www.machinerymovers.ie/cqms/

CRUSHING & SCREENING EFFICIENCY

Gipo R170FDR, 1,000 tph tracked impact crusher

www.AGG-PRO.com

J45 Tracked Jaw Crusher + S190 Vibrating Tracked Screener

McCloskey

Aggregate Processing & Recycling Ltd
Hedging Lane, Wilnecote, Tamworth B77 5EX

www.agg-pro.com

T. +44 (0)1827 280139 F. +44 (0)1827 287770 E. info@agg-pro.com



Screening...

behind every passion there is a driving force — this is ours **WS85**

We aim to offer the most successful screens. Whilst constantly searching for new and better solutions we do not follow short-lived trends, but build on our experience.



TEMA ISENMANN Ltd.

Industrial
Screening Systems

T. 01327 264227 F. 01327 264228 Email: screendecks@tema.co.uk

Customers world wide enjoying world class products

www.temaisenmann.co.uk





R2500

The R2500 is a primary screening unit allowing direct feeding, screening and stockpiling of materials up to a capacity of 500tph.

- Crushed Rock
- Topsoil
- Scalpings
- Iron Ore
- Other Mineral Ores
- Construction & Demolition Waste Material

Find out more at
cdeglobal.com/r2500



Creagh Concrete, N.Ireland

MEP designs, builds, installs and commissions processing plants to the sand, gravel industry and mineral-processing industry World-wide

Their plants classify, de-contaminate, de-water, blend, stockpile and separate silt from water. The company supplies compact, modular and fixed plants to suit all requirements for processing both 'as dug' and recycled minerals. MEP also builds compact style or modular plant with capacities from 10 to 250 t/h.

Based in the UK, the company has operational experience in many challenging environments around the World.

MEP plants process difficult deposits that do not readily fall into the required specification. They work well with bunter and glacial deposits where the silt contents vary widely, and where there are deficiencies in the raw material grading.

These are significantly more efficient than other so-called "multi-sand and classifying tanks", which are unable to accurately classify and blend these materials.

MEP plants are designed to produce the required grades of sand without generating large quantities of waste or filling lagoons.

Other products available from MEP include the Hydrolig, which is a hybrid version of the TBS Hydrosizer. This machine has been adapted to treat and remove contamination from < 40mm gravel. It is ideally suited to work in tandem with the TBS Hydrosizer to remove contaminants from both gravel and sand products.

Over the past few years MEP have also supplied plants and equipment producing specialist sands - including glass, foundry, tile and block.

Their de-ligniting plants work on deposits of peat, lignite, coal and shale-bonded lignite. Such plants can also be used in the marine environment to process dredged aggregate where wood, sand eels, coke and other deleterious matter is contained within As Raised Ballast.

Water treatment systems incorporate MEP thickeners from 2-40 metres in diameter with final de-watering using Diemme® Filter Presses.

Plants are fully automatic and can be radio-controlled or remotely controlled. MEP's water re-circulation systems minimize the process water requirement.

Based only an hour from Heathrow Airport, MEP supplies plants across the World directly to the customer, or through a network of approved distributors.

The comprehensive list of MEP products is impressive. Proprietary equipment produced by the firm includes:

- Cyclones
- Hydrosizers
- Hydroligs
- Sieve Bends
- Thickeners
- Flocculant Plants

The company also has agency agreements with manufacturers to supply:

- Pozzato Log washers and Screens
- Diemme® Filter Presses

The company's Managing Director, Steven Hyde, says he is proud of the company's World-wide reputation: "MEP have a long list of customers - including all of the major producers and many smaller companies too.

"We pride ourselves on the very high level of repeat business that we have gained from satisfied customers.

"We are happy to work with other plant producers, engineering companies and end-users."

Mr Hyde attributes the company's success to five things:

1. High standards
2. A real commitment to health and safety
3. Quality management
4. Investment in people
5. Customer service

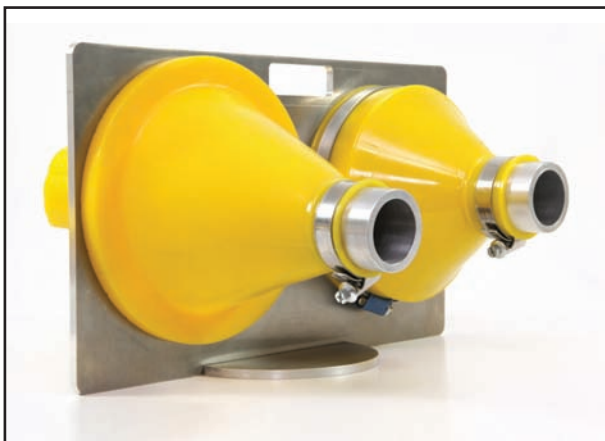


"High standards are central to everything the company does," he says.

"Health and safety is at the forefront when it comes to all of our processes and equipment. As a result, we have an excellent health and safety record, which is increasingly important across all markets.

"We are also proud of our commitment to Quality Assurance. MEP holds a BSI Certificate and we have developed a Quality Management System conforming to the requirements BS EN ISO 9001:2008.

"We are committed to continual improvement by training our people now and for the future. By continually improving our processes and procedures we are becoming ever more efficient in what we do. The ultimate goal at MEP is to continuously improve the service to our customers."



Exceptional service life with the Isepren Spray Bar Gaiter

Designed and patented by Isenmann the special Conical Isepren Spray Bar Gaiter is a flexible sealing component that is attached to the side plate of a screening machine through which a spray pipe is passed. It is used to protect and seal the spray water system in wet applications.

The conical shape tapers in an outward direction and is securely fixed at both ends offering a tight leak-proof seal. Due to the use of polyurethane, it is naturally flexible and will move in tandem with the screening machine vibrations.

The gaiter features exceptional service life with no leak tightness and flexibility. This is possible due to the conical nature of the gaiter returning material and water to the screening area.

Harder PU material at the connecting flange provides a secure fixing to the machine side plate.

Tema Isenmann can provide numerous different designs in size, diameter, thickness, attachment, as well as hardness which allow the user to adapt the gaiter to the screening machine and spraying system.

There are many advantages:

- Deposits material and water on the screen deck, no leakage outside of the screening machine.
- Reduced wear.
- High service life.
- High residual strength.
- Snap-in or 'Jubilee Clip' bolt fixing system.

Tema Isenmann is a market leader in delivering screening solutions, not a piece of plastic with holes. In other words, we do not merely apply standard design products to non-standard requirements.

We offer a complete line of screening systems designed for efficient, productive separation of materials ranging in size from fine powder to primary scalping all of which are made to your specifications with apertures from 0.1mm to 250mm.

The right solution is just a phone call away 01327 264227.



www.hub-4.com/directory/816



UK Filter Press Manufacturer Latham International Ltd to supply (Unique Design) - Mobile Jack-On-Jack-Off Filter Press

This equipment is to be used on a lagoon silt dewatering application also giving flexibility to our customer to visit a number of locations, this enables short set up times to produce high quality filter cakes into 12 metre cubed roll-on-roll-off skips, for disposal or capping of landfill sites.

Latham's based in Stoke on Trent have specialized for over 30 years in the manufacture of high quality filtration equipment, with an excellent reputation for personal after sales service. Latham Filter Presses maintain a presence in the field of filtration covering a wide range of industries including the quarry, mining and recycling sector. Driven by environmental concerns, their wide model range of recessed and membrane filter presses have proved to be very reliable.

Latham International Filter Presses easy to service, giving high performance, with long life, and a project management team that will design a system to match the customer's requirements. We supply high quality, proven design textile filter cloths, with feed pipes to withstand 20 bar feed pressure. This helps you achieve maximum efficiency in performance of your operation with cheaper labour cost.

Latham International Ltd have their own research and development division for specialist testing of client's slurry and sludge, to prove viability of existing and new proposed installations in the market place. Thus offering high efficiency dewatering solutions, and working enthusiastically with our customers in the United Kingdom and Overseas.



www.hub-4.com/directory/1955

WORLDWIDE SPECIALISTS IN MINERAL PROCESS ENGINEERING

MINERAL ENGINEERING PROCESSES LTD

MEP specialises in mineral process engineering and provides sales and service for specialist products such as Thickener/Clarifiers, Hydrosizers, Hydro-cyclones and other allied equipment as required.

MEP develops, designs and delivers equipment and solutions for the beneficiation and classification of quality products from raw minerals using well designed user friendly, low maintenance machines.

Our Products:

- TBS Hydrosizers
- Mul -Spigot Hydrosizers
- Hydro-cyclones
- Sieve Bends
- Thickeners and Clarifiers
- Fine Coal Treatment Plants
- Sand Plants
- Filter Presses



MEP
Mineral Engineering Processes

Contact Us:

6 Wilton Business Centre, Kingsway, Wilton, Salisbury, SP2 0AH, UK.

Tel: +44 (0) 1722 744799

Email: enquiries@ukmep.co.uk

www.ukmep.com



Duo delivers the closest aggregate production plant north of the river to central London for CEMEX UK

Now officially opened at Dagenham, the latest CEMEX aggregate processing plant is the closest aggregate production north of the river to central London. The processing plant which has been designed and installed by DUO plc can produce 500,000 tonnes per annum with capacity for more, most of which will go into concrete for construction in the capital city.

The whole site took six months to convert into a fully operational wharf with DUO Manufacturing completely upgrading the ship to shore system.

Ship to shore:

All sea dredged aggregate is delivered by a marine chartered ship which has a 10,500 tonne capacity with the ability to discharge at 2000tph.

The brief therefore called for the supply of a 2000tph ship discharging system with associated conveyors feeding the marine aggregate to stockpile for the processing plant.

Duo Manufacturing subsequently designed and manufactured a ship discharging system incorporating a powered traverse feed hopper which was mounted on the existing rails. The sea dredged material is fed onto a short jetty conveyor which delivers the material to the end of the jetty where it is then transferred to a 207 metre long ship to shore conveyor, where material is then fed onto a radial stockpiling conveyor.

Dudley Lloyd - Director - Duo Manufacturing, commented, "Installation of the ship to shore and the barge loading conveyors was not a straight forward job for us as we were required to design and manufacture the conveyor gantry sections so that they landed exactly on the existing concrete pontoons, all of which was completed satisfactorily."

DUO Manufacturing also supplied a 400tph barge loading system which consisted of a feed hopper with associated conveyor to the jetty and a radial barge loading conveyor.

Belt weighers were also supplied for the ship to shore and barge loading conveyors.

As well as the design, manufacture and installation DUO Manufacturing were also tasked with the removal of all the existing ship to shore equipment.

The washing plant:

With a brief to provide end products of a concrete sand, 10mm and 20mm, with the +20mm being crushed in a closed circuit, DUO designed a 250tph plant that incorporates the Terex® Aggresand 165 Processing System which features a rinsing screen, sand plant, stockpilers and all associated pipework and electrics on one modular chassis.

DUO also supplied a water and silt management system and a re-circulatory system which feeds a crusher to reduce the oversize gravel to -20mm.

Fintan McKeever, Director at DUO, commented, "The Terex® AggreSand system combines aggregate washing and screening with sand processing on a modular chassis which was the ideal solution for the Dagenham operation. It brings together tried and trusted Terex Washing Systems components in an innovative modular design, setting itself apart from other washing systems in the marketplace."



The aggregate washing process:

Stockpiled material is fed into 9m³ feed hopper which features a remote control tipping grid. Material is then fed onto an inclined conveyor which delivers the material to the first processing stage of the Terex® Aggresand 165 - a 4.8m x 1.5m triple deck rinsing screen.

Utilizing individually controlled spray bars on each deck, the two bearing screen is fitted with polyurethane modular media on all three decks. The top deck acts as a protection deck removing any material above 20mm which is delivered to the crusher feed conveyor.

The middle deck is a 10-20mm passing deck while the bottom deck produces 0-10mm and the required sand. Integral to the chassis are two conveyors which deliver the 10mm and 10-20 gravel to stockpile respectively.

Re-circulatory crusher feed system:

With oversize material delivered off the primary rinsing screen this is fed up the inclined crusher feed conveyor and delivered into a surge bin and feeder which delivers the oversize into a TC1000 cone crusher. After crushing this is then fed back onto the rinsing screen for further processing.

Sand plant:

Sand is then delivered to the 200tph sand plant for processing. This consists of a 4.3 x 1.8 sand dewatering screen, one 250/200 Linatex centrifugal pump and two G4-660mm cyclones which produce the clean in specification concrete sand which is then delivered to a radial sand stocking conveyor.

The sand plant features:

- Polyurethane modules and side protection bars
- Moulded central division plate (double grade only)
- Rubber lined cyclones
- Ceramic lined inlet bends
- Rubber lined underflow boxes - c/w quick release lid
- Rubber lined blending box
- 5.5m (18') dirty water discharge height
- Rubber lined catch box for screen underflow
- Spray bar in catch box
- Polyethylene wear board in discharge chute
- Adjustable discharge blending chute - double grade only
- Pressure gauge to monitor cyclone inlet pressure
- High specification cyclone inlet hoses c/w flanges



Plant Control:

The whole plant is safely controlled by a 'cutting edge' control panel which features:

- Robust full colour graphic HMI (Human Machine Interface)
- Automated Start / Stop sequence of all plant items
- Automated sequence shutdown on fault detection
- On-screen display of all key Parameters inc:
 - Cyclone feed pressure
 - Hydraulic oil level and temperature
 - All motors load currents and voltages
- Radio control of:
 - Plant Start/Stop
 - Sand Conveyor Radial Drive
 - Tipping Grid Raise/Lower
 - Plant Lighting On/Off

The water and silt management system:

The water treatment plant at Dagenham receives dirty water from the washing plant where it clarifies and recycles the water and concentrates the sludge which is done by the addition of a polymer. The whole process involves conditioning the dirty water from the cyclone overflow involving a prepared flocculent solution which once prepared is directed into the central feed shaft. At this stage a flocculent controller takes a sample and measures the settling speed.

This information is transferred to the PLC which automatically adjusts the flocculent dosing pump's flow (according to the settings entered during the commissioning stage) in order to optimise the flocculation efficiency and consumption. After each measure, the glass tube is automatically rinsed. (Samples taken with a vacuum system avoid the use of a pump which would distort the measure by breaking the 'flocs'). The optic cells also determine the turbidity of the recycled water and therefore adjust the coagulant dosing accordingly.

Sludge concentration and evacuation:

The sludge settles quickly at the bottom of the thickener where it is concentrated and gathered into the pumping cone due to the slow movement of the scraper. The sludge is then



drawn by a pump located alongside the thickener tank. The sludge pumping cycles are controlled according to the measure of the resisting torque applied on the scraper and interpreted by the PLC. This gives reliable information about the quantity and consistency of the sludge at the bottom of the thickener and also offers a safety in case of "building up" inside the thickener. If an overload is detected by the inverter, the scraper is automatically and fully lifted to its upper position and then progressively lowered down to dilute the sludge.

The recycled overflowing waters are discharged into the water storage tank, where the plant feed water pump installed alongside the tank sends it back to the washing plant.

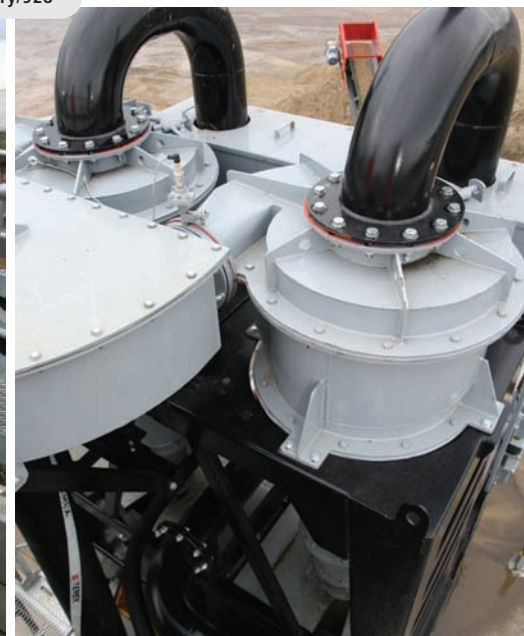
The technical room and static bridge:

The whole plant is controlled by the PLC with touch screen to display the synoptic and to give access to the settings. The main switch and control panel are located inside the technical room which is sited on the static bridge. This room also contains the flocculent preparation and dosing unit, the flocculation controller and the main switch and control panel, as well as the scraper driving unit and fresh water box.

David Whitby, CEMEX Unit Manager, commented, "The new fully automated water treatment system at Dagenham supplied by DUO has stopped the need to landfill silt and eliminate any waste that is produced from production. Having used many different water treatment systems in my 30 years of wharf production I have been so impressed with the ease of use and the elimination of any waste from production."



www.hub-4.com/directory/928



YOUR STRENGTH, OUR DEPTH.

INCREASE CAPACITY | INCREASE EFFICIENCY, RECOVERY & PURITY | REDUCE LABOUR COSTS



FOR OVER 20 YEARS, KIVERCO HAVE DELIVERED ROBUST MOBILE AND STATIC RECYCLING PLANTS AND PARTS TO EVERY CORNER OF THE GLOBE. With all material designed, engineered and assembled at Kiverco, we guarantee that equipment fits and works together 100%, every time.

CALL +44 (0) 28 8773 8811 | KIVERCO.COM | SALES@KIVERCO.COM

KIVERCO 26 Gortnaglough Road, Dungannon, Co. Tyrone, Northern Ireland BT71 5EE

**BUILT WITH
BACKBONE**

QMS provide washing screens for two of Scotland's leading aggregate groups

Leith Aggregates and Tillicoultry Quarries both took delivery of SVI wash screens in December.

Leith Quarries based in Aberdeen required a screen to replace a worn out powerscreen. QMS were able to custom design a replacement engineered to fit the existing structures, saving valuable time and money.

The screen supplied SVI-F02M 1.52 x5.0m 2 deck was manufactured to reuse the existing Scandura Module 600 polyurethane screen media.

The screens are of bolted construction for ease of maintenance and incorporate replaceable bolt on feed and discharge lips. The specification included a support frame complete with integral rubber lined belly chute and twin discharge. Support springs, spring bases, pivoting rosta motor mount, motor, v belt drives and pulleys. The screen was manufactured in 6 weeks and installed and commissioned by QMS engineers.



Louie Gray (Project Manager, Leith Aggregates) commented: "The screen box frame was designed to be supported from existing steelwork thus retaining original platforms and handrails. The simplicity of the bearing units allows them to be removed from the screen box and refurbished in workshop conditions or having a rebuilt bearing unit in stores for a quick change over. In general it is a very quiet and smooth running machine "

Tillicoultry Quarries required not only a screen but also a complete modular steel support structure, rubber lined discharge chutes, a 20m long x 750mm wide discharge conveyor with walk way and a 10m³ feed hopper with a 900mm wide belt feeder.

The slightly larger screen 1.83x5.0m 2 deck screen was configured to take wire mesh on the top deck and Isenmann WS85 Polyurethane modules on the lower deck.

Fully galvanised walkways completed the specification.

Again the plant was installed and commissioned by QMS service engineers.

Andrew Shakeshaft (Area Production Manager, Tillicoultry Quarries) commented: "The process has provided the perfect replacement for the old screen and comes with much improved access facilities. Its new orientation now provides a

facility to process the remainder of existing reserves and also future new reserves over many years to come. It has delivered what we expected. QMS engineers working closely with TQ staff on site decommissioned the old plant and re installed the new during very adverse wintry conditions safely to achieve an all-round excellent end result."

All QMS SVI Inclined screens come fitted with modular vibrator units. The extremely compact and interchangeable units make maintenance far easier compared to a conventional solid shaft design. With two bearings per vibrator pod (4 per screen) they offer exceptional long bearing life.



The 2 pods are connected through the centre of the machine using a cardan shaft. This can easily be disconnected during maintenance. The vibratory mechanism is located at centre of gravity, giving circular motion in all points of the screen.

QMS offer a service exchange on Modular Vibrating Units in the event of a breakdown.

QMS range of aggregate processing equipment includes jaw & Cone crushers, Inclined & Horizontal screens, Conveyors, feeders, complete modular plants. 100% manufactured by QMS in the UK All equipment is backed up by exceptional customer service and parts support.

BRUCE LAMELLA - providing the 'Clearer Solution to Washing'

Bruce launch new version of their 'Lamella - Fines settlement system'

This is the next step in the washing process and compliments the successful BRUCE -WASHPOD (Scrubbing, Rinsing, Sizing & Sand Production) system with its mobility, minimum setup times and simple site installation.

The Lamella Clarifier / Fines settlement system can be used in a range of industries including Primary & Secondary Sand & Aggregate Washing, C & D Waste Recycling, Sweeper or Gully Waste Recycling, Glass Recycling or Reclaimed Aggregate facilities.

The Bruce Lamella offers substantial reduction in floor space / footprint in comparison to conventional Clarifier / Thickener tanks and with this in mind the current Lamella system with rectangular design has a similar footprint to a 40ft shipping container. It is capable of providing Sludge treatment in a normal 60 - 100 TPH washing application.

The modular design of the unit enables it to be easily transported from site to site on a standard 45ft flat trailer without any oversize transport requirements. The Lamella can be supplied on Jack Legs so it can be demountable without any expensive crane or lifting equipment on site.

The Lamella system comes assembled & prewired ex factory for minimum site setup time and units currently in use have demonstrated that little site preparation is required. So with its compact size & footprint the system does not require any complicated concrete base or groundwork's.

The Lamella offers probably one of the most efficient compact thickening & clarification solutions with many advantages such as reduced water usage, shorter cycle times, retention of fines and entrapment of suspended solids in Slurry Wash water.

The process is simple where the incoming slurry from cyclone overflow enters the unique anti-turbulence system at the rear of the Lamella Tank thus enabling the settlement process to begin immediately and the incoming slurry is unobtrusively dispersed evenly into the main tank chamber.

BWR300 Washing System
(scrubbing , rinsing & sizing)



Lamella

The suspended sediment then enters the main body (approx 50M3) of the tank where a series of uniquely designed rows of Lamella plates entrap the suspended solids. These plates have a special inclination angle optimised through years of development which allows the solids to settle efficiently by gravity to the bottom of the tank. The plates are built into a series of cassettes which can be easily removed for maintenance & cleaning. Once the solids settle downwards to the bottom of the tank they are conveyed by two variable slow speed screw conveyors running full length along the base of the tank to an exit flume at the rear. In the usual BRUCE manner these screws are manufactured from HARDOX Wear resistant steel giving longer lifespan. These screws being the only moving parts in the system provides operators with ultimate reliability and low maintenance. The clarified water is displaced in the opposite direction upwards into weirs along the side of the tank into the exit chamber prior to its return to the Water Ballast tank.

With the simplicity of design and operation the Lamella clarifier is primarily designed to operate without chemical flocculants however the performance can be further improved by the addition of flocculants on suitable applications.

The model shown in the illustration has clarified water feeding from the Lamella system weir via an inclined Sieve system, ('Fine particle interceptor' for floating organics, polystyrene, plastics etc) with the clarified water flow going back to the Clean Water Ballast Storage tank. This Clarified water is then reused to wash material in the Wash-plant and then begins its cycle again.

The illustration shown has an inclined screw conveyor for removal of sludge from the rear of the Lamella for stocking or further treatment.

The lamella is designed to operate in conjunction with the BRUCE Wash-Pod or BWR300 Washing System which have an average throughput of 60- 100 TPH although with its versatile design this can be adapted to operate with other existing wash plants or many other silt recovery operations.



The BRUCE Lamella System can also be supplied with-

- Sieve (Fine particle interceptor)
- Clean water Ballast Tank
- Walkways, access steps etc
- Inclined Sludge extraction screw
- Chassis
- Jack legs (dismountable option)
- Flocculent Dosing plant
- Clean water Pump
- Slurry Pump
- Skelly Trailer
- Centrifuge or Press system

For further information on this System or any other of the Products in the BRUCE 'Washing' range visit our website www.bruce-eng.co.uk

T: +44 (0)2886763684

E: info@bruce-eng.co.uk

For UK Enquires -SCG Supplies

<http://scgsupplies.co.uk/new-equipment/bruce-engineering/>

Phone 0845 2576500 (Paul Thorne) 07711 224181



www.hub-4.com/directory/7470

The **bmi** group

has now expanded its product range to include Tipping Trailers

There are a number of models available, **with customers having a choice** of both body construction and cover options



- **Excellent build quality**, backed up by a **highly trained team** for service and aftercare

+44 (0)28 8775 3999 info@thebmigroup.com

www.thebmigroup.com

the
bmi
group

Increase your Marketplace Flexibility and Maximize Production



Minimise fine sand losses to the ponds thus maximising production of saleable product.

duo
Equipment



Call us to discuss your specific Washing, Crushing and Screening, Aggregate Processing and Bulk Handling requirements.

DUO Equipment Limited, 4 Rye Hill Office Park, Birmingham Road, Allesley, Coventry, CV5 9AB, UK.

T +44 (0) 845 22 22 386 E enq.hub4.m@duopl.com W www.duopl.com



Designing screening Technology for C&D Waste Applications

The European Commission have identified C&D waste accounts for approximately 25 - 30% of all waste generated in the European Union. As many of these materials can be recycled and re-used in applications such as construction projects and road drainage there is a great demand of systems which can effectively remove the valuable materials from the waste materials.



Materials washing specialists CDE Global have identified the need to create a pre-screening unit designed for processing C&D waste materials.

The outcome of this is the R1500 primary screening unit with up to 250tph capacity. The R1500 combines a feed hopper, P1-36 Infinity screen and conveyors and can be fitted with either a belt feeder or apron feeder.

Lead designer for the R1500, Stewart Cusick, R&D Engineer explained, "An essential element of an efficient plant is getting the feeding system right so we have spent a number of years developing the R-range of screens. We identified that more challenging materials such as C&D waste needed an advanced system to handle the demands of the heavy materials."

In early 2015 the R1500 was put through extensive site testing on eight sites across the UK trialling a wide range of C&D materials and heavily clay bound hard rock from quarries. This stage of development included G meter testing, Amp readings, stress analysis and modal analysis. The motors were also all verified under maximum load conditions.

The 5.5 tonne apron feeder has been designed to accept excavator waste including metals, heavy rock and rebar concrete. There is also the option to increase this to 7 tonnes when fitting the optional extendable hopper sides. To adapt to confined sites the hopper can be loaded from three sides. While the oversize screen has a chevron belt ideally designed for C&D waste.

The high energy screen 1.2m x 3m screen box with apertures up to 100mm is equipped to handle all C&D waste materials. Another common issue for the industry is pegging, this is not an issue for the R1500 P1-36R infinity screen as the design



process and testing have ensured the screen does not peg.

The R1500 has been designed with safety in mind with all nip points covered with guarding meeting British Standards. The side walls have also been raised to prevent materials falling from the top deck screen. The 800 mm walkways ensure it is safe and easy for operators to carry out inspections and maintenance.

There are low running costs with only 24.5 kilowatts of power needed for initial start up. Stuart Cusick, Lead Designer comments, "The R1500 is a very efficient system, in reality the plant runs on 16.5kw for a 200tph plant."

The R1500 incorporates CDE's patented Infinity screen technology which eliminates welds and results in a stronger and lighter screen which results in less power needed to provide the same acceleration as a traditional screen, reducing operational costs. The R1500 includes the Infinity P1-36R screen which measures 2.4m x 1.5m (8x5ft).

Lead designer on the Infinity range is Neil Mullan, Senior R&D Engineer, who describes some of the features of the screen, "The infinity screen includes design features such as the Rosta suspension mounts which deliver 98% vibration isolation ensuring protection for the supporting structure and the most efficient transfer of energy to the screening material. We also eliminated welds from the side walls and the screens are galvanised as standard. It's our patented design of the side walls that allow us to ensure the screen is strengthened where it needs to be without including unnecessary weight. This allows us to produce a screen that requires less power to run."

For more information about the R1500 or other CDE products please visit www.cdeglob.com



www.hub-4.com/directory/163



A Rotar Cleaner Provides Money Spinner

A Rotar Cleaner bucket helped a Nottingham-based company overcome a 17-year old materials processing problem, converting a tricky and sticky waste into a saleable commodity.

The company produced a huge amount of waste material from its construction and utility work that needed to be processed and recycled as a result. However, because the majority of the geology in the Midlands has an overlaying cover of heavy clay, the processing of groundwork material proved difficult. They said, "We can remove stone and brick from the waste easily enough. We bring in a muncher to deal with rebar. We can screen and trommel the vast majority of the material whilst it is dry. But the moment it gets wet, the trommel blocks up and the screener simply isn't efficient enough to warrant trying to separate the waste," he says. "As a result it gets stockpiled until it's dry enough to process again. Except it rarely is. As a result we had a yard full of a highly sticky waste product we simply couldn't separate."

Help came in the form of a Rotar Cleaner from Worsley Plant, highly suitable for aggregate washing.

It proved so effective that it never left, and after a two week hire, it was purchased outright.

"The Rotar worked through the top layers of the stockpile quickly because it was fairly dry and uncompacted. We removed the top quarter of the stockpile, processed and washed it without problem. After this we had the most sticky mess left, which was more akin to thick mud with stones; a totally useless material that was destined for landfill."

"But we stuck with the bucket but, because of the high wet fine content, we started to use it in a different way. We took to pre spinning the material before washing. This took out quite a bit of the fines. We then did a prewash, which took out the majority of the mud, before a final clean wash, this was simply to prevent having to constantly empty the skips that were used as the washing bays.





The resulting material makes an excellent Type 1 product and we've since discovered that it also makes excellent clean drainage material, which the local farmers love, so we have yet another market for the aggregate."

Whilst the real money-spinner, the clean aggregate can be recovered easily. We've opted for quality over speed and it's paid off," he concludes.

"We have found the only machine capable of processing such a sticky product. Our operators love it for its ease of use, simple maintenance and the fact that we are stating to get our yard back. It is a brilliant solution to a problem that has plagued this yard for too long."

A Rotar Cleaner is a rotating screening drum, which separates, mixes and cleans various materials in one continuous motion. With the Rotar Cleaner, a simple physical principal is translated to a useful attachment for the recycling, demolition and earthmoving industries.

A Rotar Cleaner can be installed on wheeled loaders, excavators, backhoe loaders etc. Loading and unloading is easy with the Rotar Cleaner. By means of a hydraulic cover, the drum can be opened and easily used as a standard digging bucket.

During the rotation, the fine's fall out of the drum and the bigger sizes stay in. By use of various sizes of changeable screens, different effects can be realized. With the rolling effect of the material, which stays in the drum, a cleaning reaction is realized by scouring.

The Rotar Cleaner is available in two models and various sizes - the HPL series and the HEX series.



WORSLEY PLANT

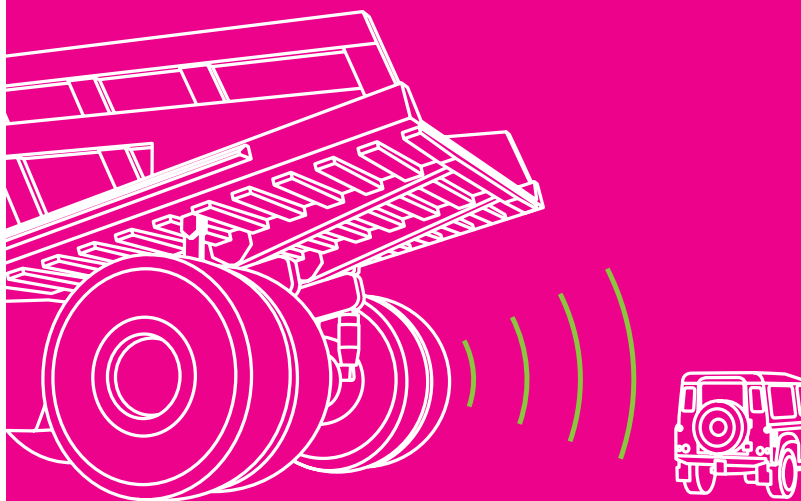
For more information contact us on
01606 83 55 44 or visit
www.worsleyplant.co.uk.



www.hub-4.com/directory/7833

NEW Backsense™

Everything you
expect from a
premium obstacle
detection radar...



...except the price

Backsense® is a new affordable radar system from Brigade designed to help reduce collisions in tough working environments. It offers a controlled beam pattern that ensures targeted detection with fewer false alerts than alternative radar systems.

Available in 3 fixed-length models and a fully configurable version for bespoke areas of up to 30m.

ALL NEW radar. Built by Brigade.



BRIGADE®

brigade-electronics.com

Call 01322 420300 or visit your stockist



Paul McWilliams of TWS Engineering presents the new AggreStac



Terex Washing Systems are making waves! - Global Dealer Conference & Product Launch in Ireland

The HUB were recently invited to the Terex Washing Systems Global Dealer Conference in Co Kildare, Ireland to get an update on developments from this growing Terex business. The conference was held at the stunning Carlton House Hotel and hosted around 80 dealers from around the globe who enjoyed the 2 day event along with a VIP visit to the World famous Guinness Storehouse. TWS had lots to shout about as well, with not one but four key important news updates for the press and their dealers. These included the launch of a brand new product line in the AggreStac, the launch of their own project management service 4Site, and the opening of two new huge production and spares facilities in Northern Ireland.

New Product Launch - AggreStac

The all new AggreStac was introduced by Paul McWilliams of TWS Engineering "We are delighted to launch the AggreStac range which is a containerized, tracked and hydraulically driven high quality range of stacking conveyors, available in three models, 50, 65 and 80. They are self-powered diesel units featuring a full hydraulic set-up, so no crane is required and are all tier 3 or 4 compatible, dependant on what is required for the region. Another key benefit is transport, all the range can be shipped in a container, the AggreStac 50 in a standard 40ft container and the AggreStac 50 and 65 in a high cube container."

"The 50ft version has a 42" wide belt, a maximum discharge head of 7.6m, and a capacity of 400 tonnes per hour. The 65ft

version again has a 42" belt with a maximum discharge head of 10m and a capacity of 400 tonnes per hour. The 80ft version has a 42" wide belt, a maximum discharge head of 11m, and a capacity of 400 tonnes per hour. The new standard 42" belt is very important in the design, and allows us to harmonise all the controls across the range as well as keeping parts to a standard size."

"The range incorporates easy access for service and maintenance, a steel lined feedboot as standard with extended and rubber lined options, light weight dust covers to enclose the whole length of the conveyor and a head drum guard. The underside and roller guarding are also fully enclosed and there is an option for disk rollers for the chevron belt. All in all, we anticipate this to be a very popular product range."



Left to right: Iain Walker - Global Sales Director, Elaine Donaghy - Marketing Manager and Sean Loughran - Director of TWS

Brand New Development of TWS Washing Facility & Global Spare Parts Facility

Garry Stewart, explained about the new development at the TWS washing facility, where Terex have invested £2m in a brand new facility for TWS. "A few miles down the road from the main Dungannon production site, this new 23,000 sq ft facility will allow for sub-assembly, final assembly, and full testing of fully assembled machines, as the building has been designed with maximum height and effective crane lifting ability in mind. It features four 40ft high 20tonne gantry cranes and a tandem lift which can lift up to 32tonnes easily. This now means that TWS will be able to build their AggreSand® range in its entirety within this new facility, fully set-up and tested inside."

"The new facility will have much more storage and allow more flexibility for global dealers wanting to change the specification of any factory ordered machines up to 2-3 weeks before the machine is due to be delivered - a huge benefit to be able to offer."

"Also, as part of this new production facility a new office complex is also being built, which will feature a complete testing lab for client projects, where samples can be put through a host of tests. Miniature sand plants will also feature in this lab environment for complete and thorough testing purposes. This high tech environment will allow us to attract the best in graduates who wish to join the already strong team of 650 people employed across both the Dungannon and Farlough sites by TWS."

Garry then went on to explain about the new Global Spare Parts Facility "Terex have also recently invested £4.7m in a brand new Global Spare Parts Facility at Granville Business Park, which has a high tech picking system allowing for quick selection and dispatch of parts and operates over a 58,000sq ft warehouse operation. This facility will allow us to improve our spare parts services across all of the Terex brands."

4-Site Launch

Terex Washing Systems now have a new complete installation project management service, Garry Stewart told us more

"We're launching TWS '4Site' as a complete installation project management service for our dealers. The feedback we have received in the past has told us that our dealers sometimes need more assistance in the field in installing TWS plants across the world, so we have decided to come up with a service that gives several options in the amount of support required on-site."

"The project management service is divided into four key stages, appraisal, project plan, support and installation. There are three levels of plan, silver, gold and platinum dependant on the dealers' requirements and level of installation support required. Platinum for instance will give the dealer a full turnkey package with a team of experienced TWS engineers on-site to install the plant."



Elaine Donaghy, Marketing Manager of TWS pulling a well-deserved pint of Guinness at the dealer evening event

Iain Walker, Sales Director of Terex Washing Systems was on hand to give us a little more insight into how the business has developed "We created Terex Washing Systems back in 2012, and since then we've grown 30-40% year on year. We started at just under \$10m and by close of business this year we will be at \$30m. Our target for 2020 is to have achieved \$100m, so you can see that we have an aggressive plan to drive the business forward. Currently we have 80 global dealers, and we are looking to expand this to take advantage of certain territories and we are also committed to developing our product range to assist in this growth. As a business unit globally within the Terex Corporation we have big plans, but we also see TWS as very important to the economy in Northern Ireland and will continue to support that ethos."

For more information on Terex Washing Systems visit www.terex.com/washing



www.hub-4.com/directory/15386

Experience the Progress.



Material handling equipment

- Maximum efficiency through progressive technology
- Sophisticated machine concept for maximum productivity
- Quality components manufactured by Liebherr
- Ergonomic workspace for consistent high performance

Liebherr-Great Britain Ltd.
Normandy Lane, Stratton Business Park
Biggleswade, SG18 8QB
Phone: +44 1767 60 21 00
E-mail: info.lgb@liebherr.com
www.facebook.com/LiebherrConstruction
www.liebherr.co.uk

LIEBHERR

The Total Mobile Solution - Warwick Ward Introduce the Ecohog Product Range to their Recycling Equipment Fleet

Ecohog Ltd, specialists in Air Separation and Metal Recovery has joined forces with Warwick Ward, to fully service the UK and Ireland Waste recycling markets with the total mobile solution.



Warwick Ward were established in 1970 and over the last 45 years have established themselves as world renowned experts in the sales and service arena of earthmoving equipment and more recently waste recycling equipment. They are currently the UK flagship dealer for CASE construction equipment; a newly announced dealer for the full Terex Environmental Equipment range and the sole UK distributor for TANA Shark slow speed waste shredders and landfill compactors.

The Ecohog Product Range comprising of the Ecohog Windshifters, HogMag Eddy Current Separator and Scraphog Magnetic Separator are designed with quality at the forefront. The Ecohog units are all equipped with vibrating pan feeders to ensure a controlled and evenly distributed level of material enters each machine minimising blockages and further improving the quality of separation achieved.

All units are fitted with energy saving motors which have a lower slip than standard motors and generate a higher level of speed achieving increased productivity, reducing maintenance and operation costs. The motors are more robust and reliable improving overall operations.

The hook loader feature of the units adds the benefit of the units being mobile creating flexibility for ease of movement from location to location. The unique design to the unit means it can be easily integrated with existing systems.

Air Separation

The Ecohog Windshifter unit allows processors to incorporate air separation into new or existing processing configurations that experience contaminants in the materials. The technology provides an alternative to manual sorting which is both exhausting and expensive. The Windshifter operates on the principle of opposing densities and the precision settings and powerful integrated fan design ensures the highest quality separation is obtained. The Windshifter range has been designed for both mobile and static installations incorporating low energy consumption, low noise levels, and low dust emissions whilst meeting the latest law regulations and promoting the environment at a more affordable price.



Ferrous and Non Ferrous Metal Separation

The HogMag Mobile Eddy Current Separator introduces the use of a powerful magnetic field to separate non-ferrous metals from waste, post removal of all ferrous metals which are removed by a magnet arrangement. The application is fed onto a vibrating pan feeder to control the feed. The ferrous metals are directed from

the magnetic drum to the metal ferrous conveyor and the non-ferrous metals to the eddy current separator.

The remaining material, ferrous metal free then enters the high speed magnetic rotor inside the HogMag Eddy Current Separator where a strong magnetic field causes the non-ferrous metals to be propelled in a slightly different direction than the metal free material on the belt, warranting a clean separation.

The Scraphog Magnetic Separator tackles applications with large heavy scrap metal such as steel that needs to be separated in advance of further processing to protect equipment and ensure better separation downstream. The large heavy scrap metal can also yield significant cash value depending on the type of material being processed.

The Ecohog Units have been designed to work in conjunction with a range of waste separation equipment which complements the Warwick Ward existing range.

Warwick Ward

"The partnership with Ecohog is a very exciting one indeed. The product is superbly well engineered and has many uses in a variety of waste streams and applications. It fits perfectly with our other product offerings from our recently announced partnership with Terex Environmental Equipment and also our continuing partnerships with both Case Construction and Tana. We are now able to offer a total mobile solution to the waste recycling industry - loading and material handling machines at the front end of a process; a full shredder range; recycling and trammel screens to suit all applications and air and metal separators at the back end in the form of the Ecohog range. It already looks like being a very busy and exciting 2016" says Ashley Ward, Managing Director of Warwick Ward

For all enquiries within the UK and Ireland contact Warwick Ward directly on 01226 747260.

BlueMAC supply Irish Waste with a new MRF

The HUB recently visited Irish Waste in Carryduff near Belfast, where BlueMAC have completed the installation of a brand new bespoke MRF. Operating two busy facilities across Northern Ireland, this 26 acre Irish Waste site supplies many environmental services including commercial Waste treatment and recycling, waste transportation, hazardous waste treatment and recycling and full disposal. The newer skip-waste part of the business is offered to compliment all of their other services for clients, and this is where the need for a bespoke MRF plant came about.



Left to right: Jason McPolin, Managing Director of Irish Waste with Daniel Tomlinson of Blue

BlueMAC were tasked with building a plant that would be capable of handling increasing amounts of skip-waste from the surrounding greater Belfast area, and to recover as much recyclable material as possible. Jason McPolin, Managing Director of Irish Waste was on hand to give us a full tour of the facility 'To maintain control over our feedstock, all incoming waste material is put through a Doppstadt DW 3060 pre-shredder and then into a feed hopper, which is carried up to a trommel, and then separated into a +40mm fraction and -40mm fraction. The -40mm leaving the trommel is then put through a processing line which includes an overband magnet taking out any metal, a Spaleck flip-flow screen screening out a 12mm and 15mm fraction, and a GK density separator which blows off the lights.'

"This gives a very dry light material coming off the GK separation which is suitable for cement kilns, and then two grades of fines, which are then processed further. The +40mm fraction is sent up to a manual picking station, allowing for separation by up to eight fully trained operatives. Hard plastics and wood are picked off here along with any non-recoverables."

Daniel Tomlinson from Blue explained a little more about the picking station "There is a lot of thought and planning that go into the build of the picking stations, from rubber mats to make standing-up easier over a long period, to recessed foot space under the picking belt, to improve the operators posture. We really have taken these units to another level within the industry."

We handed back to Jason McPolin, Managing Director of Irish Waste "When the material leaves the picking station it goes under another over-band magnet and through another GK density separator, the resulting material is then sent into another separation unit and finally onto an eddy current / rotary magnet process taking out any aluminium and ferrous metals. The end product material can then be processed further as RDF."

"We made an investment of over £2m in the plant and associated equipment, and looked initially at four potential suppliers. After much research and visits, we decided to go with Blue. They have given us very good advice on what we should have in place and they have been able to supply and install the full package including the complete plant, the shredder and material handler, making things much easier, and I have to say, Blue deliver. The install team was excellent from BlueMAC, the quality was second to none, and the whole build only took around 5 weeks from start to finish, and no-one knocked on my door with any issues."

Irish Waste standards are high and the impressive plant is kept immaculate with a daily cleaning routine at the end of each day, and by the use of two on-site mini road sweepers.

From Irish Waste, we made the trip over to the BlueMAC manufacturing facility in Killyman, Dungannon, Co. Tyrone. This is where the design, production and testing is carried out for all BlueMAC projects. The BlueMAC manufacturing facility is 90,000 square feet and operates some of the largest steel cutting and press folding equipment in the UK and Europe. BlueMAC is also focusing heavily on more robust engineering that will give a longer lifespan to MRF plants. For example, all cutting is carried out by lasers allowing a much more accurate finish.



The Spaleck flip-flow screen



Terex FUCHS material handler and the Doppstadt DW 3060 Shredder



The BlueMAC manufacturing facility

Oliver McShane from BlueMAC was on hand to give us a little more background "The partnership between DMAC and BlueMAC brings together over 20 years of manufacturing expertise coupled with extensive market knowledge and enviable reputation of the Blue Group. We have traditionally been heavily involved in manufacture and engineering in the crushing and screening industry and this joint venture has allowed us to expand even further into the recycling industry with BlueMAC. Our plans for the factory allow us to maintain our growth and develop new plant and equipment for our range, whilst ensuring that we can build on the engineering quality that has been such a vital factor in our success since we launched last year."



The new BlueMAC plant

"Through BlueMAC, all aspects of the manufacturing of our systems are controlled in-house. We offer the full manufacturing process, from handling the initial enquiry, to final designs, cutting and folding of steel, painting, installation and commissioning. BlueMAC employ our own fully qualified design engineers who use the latest design software to make the most economical use of the raw steel, reducing waste and driving down costs for our customers without compromising on quality."

For more information please visit www.bluemacmanufacturing.com



www.hub-4.com/directory/2260



Innovation at Work

"Equipment built to work as hard as you do"

DEMO DATES NOW AVAILABLE

BUY

Hire

Lease

**SHRED
SCREEN
SEPARATE
STOCKPILE**

The EDGE brand is intrinsically linked to the material handling, mining and recycling industries. With an extensive product range, EDGE offers high quality, robust products from stockpilers, slow speed shredders, trommels to fines recovery plants. All of which have been designed to improve productivity and minimising operator costs. Call us today to find out more...

BOOK A DEMO TODAY...

+44 (0)28 8774 0525

www.edgeinnovate.com

info@edgeinnovate.com



ORGANIC WASTE



DOMESTIC WASTE



WASTE WOOD



C&D WASTE



EDGE TOP SOIL



AGGREGATE



W T Clarke & Son expand with a new Neuenhauser Star



W T Clarke & Son based in Leicester have taken delivery of a Neuenhauser Star Screen from UK dealer Riverside Machinery Ltd.

W T Clarke & Son operate a compost and wood recycling facility at their farm in Leicester where they shred and screen wood for use in biomass and compost for use on their farm

Until recently they have had to make do with a Backers star screen, but with their tonnages increasing year on year discussions began with Riverside Machinery to replacing their existing screening plant.

John O'Neill of Riverside Machinery comments "for ultimate throughput and excellent separation of material, nothing will touch a Neuenhauser star screen. They really are the ultimate tool for screening wood, compost and skip waste at high tonnages"

This particular Neuenhauser star screen model is fitted with a 7 metre x 1.25 metre star deck and has 300mm diameter stars which allow for screening down to 0-20mm and out to 0-60mm depending on the speed of the stars.

In addition the machine is fitted with automatic lubrication, screw auger to agitate the material, the facility to fit a windshifter at a later date.

The power unit is a 6 cylinder Perkins diesel engine and all controls are hydraulic driven. One of the main features of the Neuenhauser star screen is the engine bay is placed over the front of the hopper. This has several benefits. Servicing of the machine is much simpler. The engine is placed far from the hydraulics and the machine is much more stable on the roads due to the majority of the weight being over the fifth wheel transport pin.



www.hub-4.com/directory/12459

The bmi group has now expanded its product range to include Tipping Trailers



There are a number of models available, with Customer having a choice of both body construction and cover options. Excellent build quality, backed up by highly trained team for service and aftercare.

The bmi group, recognised as the leading manufacturer of Walking Floor® Trailers in the UK, has now expanded its product range to include Tipping Trailers.

"This is a market sector that interested us, when we recognised the substantial overlap between it and the waste processing & recycling sectors. There is a growing need for Tippers throughout the UK for fines or heavy organics, recycling/demolition and general quarry materials." General Manager, Richard Ogle explained. "With the close relationship between tippers and the ejectors we already specialise in, it makes perfect sense to offer a larger range of trailers to our customers."



These vehicles will exhibit the excellent build quality we are well known for and are available in a choice of models in Aluminium or Steel construction. We will also be introducing a HalfPipe-Ejector to the range in January 2016, based on the proven success of the hydraulic operating system our benchmark waste ejectors have set. Each trailer has a number of different cover options and can be painted with your company colours and artwork.

Enquiries have been coming in steadily even ahead of our official product launch; which is planned for Tipex 2016, in Harrogate in May 2016; with quite a few orders secured for the new year.

The bmi group has branches in Northern Ireland, Willenhall & Brierley Hill, West Midlands. With its service centre, bmiPL (Pit Lane Services) based in the W. Midlands, we provides a central base for the GB market. As well as trailer manufacture, our highly skilled team provide a variety of services, including PTO installation, trailer repair, bodywork & hydraulic installation.

bmiVH, the Vehicle Hire division of the group, can offer any of the tipping trailers; alongside the full Walking Floor® & Ejector range; for medium and long term hire.

info@thebmigroup.com T. 00 44 (0) 28 8775 3999
www.thebmigroup.com



www.hub-4.com/directory/12203

the
bmi
group

Liebherr launch the new Xpower® wheel loader range to the international press



Tom Reilly of Reigart with Brian McGrane of Liebherr

Over thirty of the world's press were on hand to see the official media launch of the new Liebherr Xpower® wheel loader range in Scotland. After a full tour of the 'Forth Crossing Project' which features five impressive Liebherr cranes, the group arrived at the Reigart Recycling Facility in Coatbridge near Glasgow to see the Xpower® machines put through their paces.

The new Xpower range features six machines from the 550 up to the 586, and on hand at Reigart's were the 550 and 566 wheel loaders. The Xpower® range features a new innovative Liebherr XPower® driveline system which considerably increases working efficiency, tipping loads, machine availability and quicker working cycles leading to

increased handling capacity throughout the range.

The Liebherr XPower® driveline brings together the hydrostatic and mechanical drive. The interaction between these two different drives is continuously adjusted automatically to the given application. As a result, XPower® offers the optimal level of efficiency during material loading and travelling, providing maximum acceleration and performance along all loading cycles - including both short and long haul. All components are also ideally adapted to each other. XPower® stands for maximum efficiency.

The Liebherr XPower® driveline allows continuous regulation of acceleration in all speed ranges, without noticeable gear shifting or interruption in tractive force. Greater performance and excellent operator comfort increase your productivity. The requirement for unnecessary counterweight can be avoided through the unique component mounting position at the rear of the machine. Ideal weight distribution results in high tipping loads and greater handling capacity per hour of operation. The Liebherr XPower® travel drive accelerates quickly, allowing high travel speeds. Time savings can be made on flat terrain, as well as on inclines resulting in considerable gains in productivity. The Liebherr XPower® driveline with Liebherr Power Efficiency (LPE) achieves a reduction in fuel consumption of up to 30%. XPower® efficiency reduces operating costs and increases profitability.



The Xpower® range features a new innovative Liebherr XPower® driveline system which considerably increases working efficiency



The cab design is optimally adapted to the operator's day-to-day requirements. The roomy and ergonomic operator's cab offers perfect conditions for comfortable and productive work.

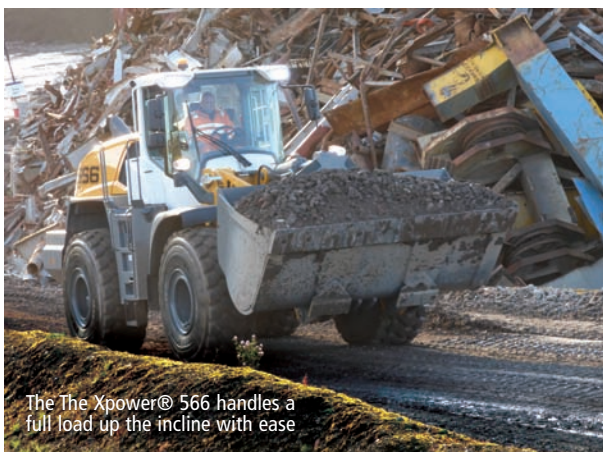


The Xpower® 550



High working loads

The Xpower® 566



The Xpower® 566 handles a full load up the incline with ease

Lift Arm variants are available to help optimise production and reliability whatever the application. The standard Z-bar linkage provides a large torque in the lower region of the lift arm, the ideal prerequisite for conventional wheel loader applications - simple, quick filling of the bucket leads to high handling capacity. An alternative is available in the form of the industrial lift arm for L 550 - L 566 and L 580 wheel loaders at no extra charge.

The industrial lift arm boasts a parallel guide arrangement and especially high torque in the upper lifting range, the best solution for industrial use as it allows large attachments to be fitted for transporting heavy loads. The new sturdy bucket design from Liebherr allows the bucket to be filled quickly and efficiently, fully filled attachments increase productivity. The bucket's excellent penetration and simple filling mechanism result in lower fuel consumption.

The wide range of attachments available means the right tool is always to hand. As a result, a multitude of uses can easily be covered which increases utilisation of the machine and raises productivity. Liebherr wheel loaders can manoeuvre quickly and efficiently thanks to their compact design - the best choice for high handling capacity.

Lee Palmer, Managing Director of Liebherr-Great Britain Ltd outlined more about the brand "Over the past ten years Liebherr-Great Britain Ltd has seen steady growth across all our product lines. The material handling side of our business has achieved market leader status for a number of years in the wheeled excavator product sector. These machines are specifically designed to suit scrap and waste applications and have many USP's which set us apart from our competitors. We will deliver over 100 machines to our customer base during 2015.

We have also seen growth in the earthmoving product sector of the construction industry. Sales of wheel loaders and crawler excavators have increased based on the quality and performance of these machines. The crawler excavator is a huge market sector with lots of opportunity but is very price sensitive. The wheel loader market is also buoyant and

Liebherr-Great Britain Ltd has increased its market share on these products over the past two years. In this product sector we will deliver over 80 units to UK customers this year.

Although the earthmoving sector of the construction industry is highly price sensitive, it is vital that we capitalise on this growth opportunity and exploit every sales opportunity across these products.

What has caused the increase in demand in the UK market? The first reason is the backlog of demand for fleet renewal. During the recession years between 2008 and 2012 earthmoving customers retained older machines in an attempt to stabilise costs throughout their businesses. This meant the market for new and used earthmoving machines was low. As confidence returns, and new projects get underway, investment has grown in new equipment which has also increased the amount of used equipment available as customer's trade in old machines for new.

Although some of the major projects were started or at least announced during the recession, there has been an increase in demand for construction plant. There is a national shortage of new homes throughout the UK as developers struggle to supply to demand. Projects such as Cross Rail, Mersey Gateway, and the Forth Crossing have supplemented the many road building and government funded construction projects throughout the UK. New large infrastructure builds, such as HS2 and Hinkley C Power Station will continue to drive demand in the coming years.

Our used equipment business deals with machines which are coming in from a number of different sources. A trade in against a new machine being the most popular. Second, operating lease's which have recently matured. The last being disposal of older Liebherr rental machines.

Our division's aftersales staff is made up of 122 employees, working from eight UK depot locations. This aftersales team consists of 67 engineers, 55 of which are field based while twelve are workshop based. We have 31 office based administration staff as well as in house technical experts who assist our engineers to diagnose and repair. With this labour force, Liebherr's aftersales service for earthmoving equipment in the UK has reached an outstanding level ensuring on which high performance can be delivered to our national customer base.

Last but not least, our rental activities are a key part of our total operations. Our UK rental fleet owns 190 machines and is targeted to grow to 300 machines in the coming years. Each year, the rental division will purchase approximately 60 new machines to strengthen its fleet, as well as disposing of older machines. One of the key advantages of the rental division is that new sales can utilise rental machines to deliver product demonstrations. This is an excellent way to promote the features and benefits of Liebherr machines prior to sale.

Before I close, let me try to give you an outlook: Recent market statistics suggest that the earthmoving sector of the construction industry in the UK will continue to grow in the future - albeit such prognosis needs to be seen with caution. Market pricing and total cost of ownership is critical as customers look for more cost effective solutions to move earth. At the same time, scrap prices appear to remain low and this will affect investment and sales of equipment into this market sector. To summarise, our overall projection is quite optimistic and we look forward to new equipment coming up towards Bauma 2016."

For more information visit www.liebherr.com



www.hub-4.com/directory/504

Applied Rubber Linings Ltd

Process Plant Liners



Serving the Mining, Quarrying,
Aggregates, Materials Handling,
and Recycling Industries



Rubber lined components for a sand washing plant.

Abrasion and chemical resistant rubber linings for slurry pipes,
sand washing plant, mixing tanks, conveyor chutes, cyclones,
discharge buckets and dredger pipework.

Tel: 01452 381849
www.applied-rubber.co.uk

COME TO THE HOME OF CRUSHING & SCREENING

IRELAND'S CONSTRUCTION & QUARRY MACHINERY
SHOW WITH OVER 200 EXHIBITION STANDS

21-22 APRIL 2017

Factory visits after the show.

Ireland is one of Europe's most exciting
countries to visit. Why not stay longer, come
to the show and our factory visits and then
enjoy this stunning country and everything
that Ireland has to offer. Only 1 hour's
motorway drive from Dublin Airport
to Molloy's quarry, Tullamore
offers a great choice of high
quality accommodation



April 21st - 22nd 2017

Molloy's Quarry, Tullamore, Co. Offaly, Ireland

For more information contact Brian Coogan:

Email: brian@machinerymovers.ie Tel: +353 8343 35968

Brought to you by



Get the Metal Out!

Protect your equipment and keep your product pure

Eddy Current Separator

Separation of small aluminum chips from
shredded and ground plastic flake materials



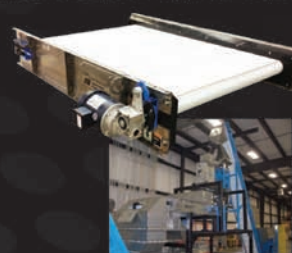
Overband Magnet

Separation of ferrous metal
contamination from non-ferrous products



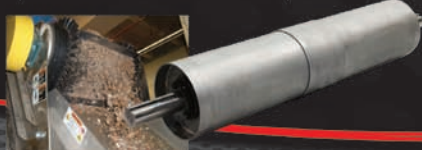
High Intensity Conveyor

For the separation of work hardened
300 stainless and para magnetic chips



Magnetic Separation Pulleys

Continuously remove discharging tramp
metal from the product flow for both product
purification and materials separation



BUNTING
Magnetics Europe Ltd.

Tel. +44 (0) 1442 - 875081

Fax +44 (0) 1442 - 875009

www.magneticseparation.co

Tom Prichard Contracting Limited: Bringing Hybrid technology to Wales



Tom Prichard Contracting Limited became the first construction business in Wales to take on a brand new Komatsu HB215LC-2 Hybrid machine recently, adding to the 25 plus Komatsu's already in their fleet. This follows a trend that Marubeni Komatsu have been following for some time - Hybrids are turning up everywhere. Not only have they entered the mainstream marketplace, they're beginning to show up on job sites too.

Established as a plant hire company in 1995, Tom Prichard Contracting Limited are now the first in the industry to add a Hybrid to their fleet. Over the last 20 years, they've diversified immensely and now offer a wide range of services including demolition, bulk earthworks, site clearance, ground remediation, recycling, drainage, infrastructure services and waste management.

We spoke to Chris Goodfield, Contracts Manager at Tom Prichard who talked us through a few of the problems we had with the current set-up; "Our fuel usage on our own recycling plant was far too high. The way we were doing it before just wasn't feasible, it just ends up eating into our profits."

We had an excellent solution for Chris. For those not in the know, Hybrids are the moulding of hydraulic and electric power. We've already seen the eco-friendly switch from fuel to electric in the conventional car, but it's the fusion of hydraulic and electric machines that has given birth to a brand new breed of ecological and sustainable machinery. We've seen on average 30% lower fuel consumption, (compared to a standard PC210LC-8 Excavator) and less CO₂ emissions, making it a greener machine.

We're very flexible with allowing our machines out on demo, including our Hybrid. Chris quotes; "Marubeni-Komatsu and



Carole Nicholls, our Area Sales Manager were the only distributors to suggest a Hybrid. No one else came to us and told us we could have a machine on demo, so that was a huge factor during the decision making process, as we actually got to put it through its paces first".

The Komatsu Hybrid joins Tom Prichard's ever expanding Komatsu collection, with over 25 plus in the fleet. They're already looking forward to the potential cost savings. Chris went on to say; "We'll be running the Hybrid for around 10 hours a day, or 60 hours a week. So, obviously the cost savings were an important issue for us. There is a definite need for us to be more sustainable! We're hoping for around a 50% cost saving on the Hybrid"

It's widely regarded that the construction industry has been subject to heavy scrutiny, and as a result, a litany of regulations intended to promote a more sustainable industry have been introduced. With more restrictions set to be introduced, the most cutting-edge, innovative and low emission vehicles will be the difference between a customer winning or losing a contract.



www.hub-4.com/directory/537

BORN TO RECYCLE



721F WASTE HANDLER

1. RECYCLING IS ITS JOB

Heavy Duty Cooling Cube
Heavy Duty Axles
Heavy Duty Guards (x 14)
Best-in-class payload

2. LESS FUEL AND WEAR

Fuel saving engine: SCR
Fuel saving transmission:
ProShift
Extended tyre life with open
diff with 100% diff lock

3. A SAFE CHOICE

SCR technology
arrests sparks*
Ground maintenance
from the rear

* Case 721F meets spark arrester criteria 5100-c of USDA Forest Service Standard

CASE Customer Assistance
00800-2273-7373

www.casece.com

EXPERTS FOR THE REAL WORLD
SINCE 1842

CASE
CONSTRUCTION

The engine of innovation



Fred Bell, JCB's business manager for the waste and recycling industries, looks at what machine manufacturers are likely to be focusing on in 2016.

Whether for materials handling, recycling, or quarrying, machine manufacturers - like

JCB - are always looking to innovate to meet the changing requirements of their customers and ensure they conform to all relevant legislation. That might mean developing engine performance and reducing emissions, or looking to improve operator comfort and safety.

Lowering emissions

Stage IV/Tier 4 Final - the engine emissions regulations for off-highway machines - aims to reduce the hazardous exhaust emissions of new vehicles sold in the EU and North America. The regulations have been driving engine development for some time now and will continue to be a primary focus for many machine manufacturers in 2016. The standards introduced a very stringent Nitrous Oxide (NOx) limit of 0.4 g/kWh, which has triggered the widespread use of NOx after-treatment (typically urea-based Selective Catalytic Reduction) on affected categories of engines.

At JCB we are proud of our record in innovation and we are happy to report that most of our machines are now Stage IV/Tier 4 Final compliant. The new JCB EcoMax Stage IV/Tier 4 Final engine range requires no Diesel Particulate Filter (DPF) to meet the latest standards. This offers real advantages for users, as there are reduced operating costs with no DPF components to maintain and service. The lack of bulky DPF components also mean a smaller engine package, hence a more effective machine design.

The EU is already preparing for the next stage of engine standards, so further innovation will be required in order to meet these new challenges. . Proposals for Stage V emission limits for engines in off-road mobile machinery are being developed with a provisional planned introduction date of 2019. These standards will be applicable to diesel engines from 0 to 56 kW and to all types of engines above 56 kW. These stretching targets give manufacturers operating in the EU further impetus to develop engine performance and reduce emissions in the coming months and years.

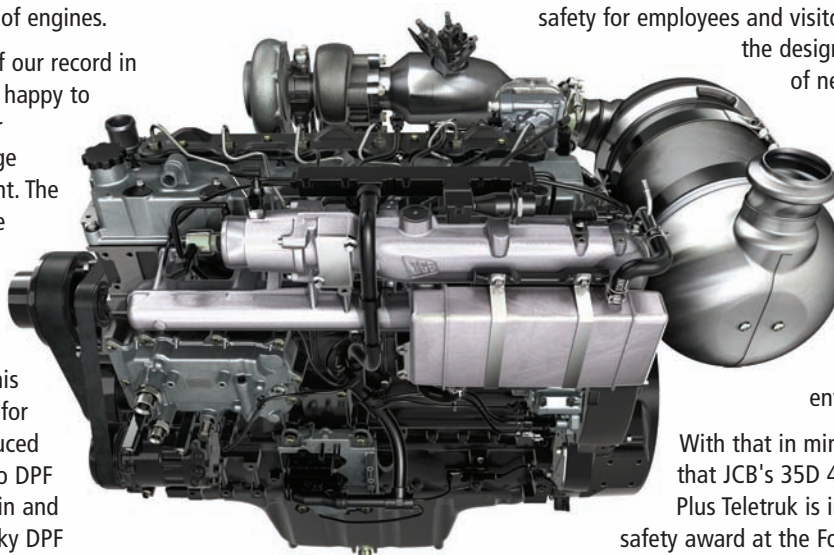
Keeping safe

As well as the environmental benefits of reducing emissions, the health and safety of those working in the materials



handling, recycling, or quarrying industries is of paramount importance. Whether it is loose materials or large containers; hazardous substances or heavy machinery; slips, trips or falls, there's a lot of potential danger at work sites.

Manufacturers play a vital role in helping to increase safety for employees and visitors to sites through the design and development of new machinery. There are many protection features that can enhance operator safety and minimise any damage to machines, even when working in harsh environments.



With that in mind, we're delighted that JCB's 35D 4x4 Wastemaster Plus Teletruk is in the running for a safety award at the Fork Lift Truck

Association's Awards for Excellence 2016. Voting closes on 15 January 2016, so if you haven't already and want to vote, please don't delay! The versatile Teletruk features a range of new safety features, including greater operator protection and better visibility.

You can be sure that there will be further developments in the field of health and safety throughout the year.

Whichever machines you use, you need to know that the manufacturer is meeting its legal requirements, listening to your needs and keeping your employees safe, so that you can concentrate on running your site and business to maximum effectiveness.

www.jcb.com



www.hub-4.com/directory/458

Kiverco unveils its backbone in waste composting



Kiverco and EnVar, two waste and recycling experts in their respective fields, have joined forces to help to protect the environment and create resources for future generations as a new Kiverco waste screening plant is installed at EnVar's organic waste treatment site in Cambridgeshire.

EnVar and Kiverco

EnVar is the UK's largest waste in-vessel and windrow composting facility and currently recycles: food waste and green waste, co-mingled food and green waste and specific organic waste. With 30 years' experience in composting, EnVar now works with a number of Local Authorities throughout the UK.

Kiverco consults, designs, engineers and builds uncompromisingly robust recycling plants for the waste processing industry, utilising the latest technology to consistently provide reliable output and recovery, in line with the latest industry developments.

The Woodhurst Site

Regularly operating to full capacity and with 16 full time workers, the EnVar site is incredibly busy. Recycling peak times change and weather impacts on the process too. For example, in the summer, as temperatures increase and the nation gets greener fingers, huge levels of garden waste can be expected. During such times, staff can expect to see 35 loads a day of mixed food and garden waste, each weighing 26 tonnes.

As the waste arrives it is immediately mixed, shredded and blended, then water is added before the material is transported into a tunnel as part of the "in vessel" composting system. During this process, the environment is managed carefully so that the material reaches a temperature of 60° for 48 hours as this eliminates undesirable pathogenic bacteria such as Salmonella, E.coli single protein production and even weed seeds. The tunnels at EnVar can take up to 450 tonnes of waste in one vessel. Once this process is complete, the waste is transferred to a maturation pad outside and exposed to the elements. After 8-12 weeks of turning to achieve aeration and close monitoring, the waste is ready to be transferred to the recycling plant for final processing to produce a top quality soil improver and other similar products.

The Challenge

In order to improve throughput and product quality, EnVar called in Kiverco to review operations. In July 2014, the local Kiverco Area Sales Manager, JP Devlin, met with Neil Pickard, then Executive Director of EnVar, to discuss the company's requirements for a new recycling plant. The Kiverco service always starts with a detailed review of the client's present activities and crucially, further consideration of the outcomes the client is looking for. This approach is critically important and enables Kiverco to gain the best possible understanding of the customers present a future needs. During this process, Kiverco carries out tests on the input material, so as to clearly understand its composition and uses the results gained when making their final proposals.

After detailed discussions, it became apparent that the EnVar site required one purpose designed static plant as opposed to the five separate systems that were currently being used. The workers had experienced problems as the different plants required individual maintenance and management. It was also vital for EnVar that the new plant could easily cope with the increasing daily volumes of waste being handled at the site and be flexible in terms of the different fractions that can be sifted.





The Solution

After listening carefully to the requirements outlined by Envar, Kiverco designed and installed a custom built composting plant, able to separate household organics and recover recyclables with maximum efficiency. This plant was unveiled in September 2015.

Commenting on the design of the plant, JP Devlin at Kiverco said "When engineering this plant, we were not afraid to do something different to ensure the client had the best solution for their specific needs. This involved us working closely with third parties throughout the process to ensure every element of the plant was perfect for EnVar."

The plant has eight different systems within it that ensure maximum uptime and therefore maximum output. These include:

1. Dosing feeder- giving a consistent and metered flow of material into the plant
2. Waste screen- separating material with measurements of less than 150mm
3. Picking station- manually removing any contaminants such as plastic films from the material, leaving a clean wood fraction to be re-used as a bulking agent for the composting process

4. Combi station- screening out products of 0-10mm and stockpiling it, and splitting material of 10-30mm & 30-150mm using a vibrator screen
5. Density separation- conveying the material left (10-30mm & 30-150mm) and removing light contaminants, such as papers and plastics
6. In-line magnets - passing the material beneath in-line magnets for the removal of ferrous metals
7. De-stoner - removing the stone from the two fractions
8. Quality control- manually removing any remaining contamination from the material to leave clean, organic product either for re-use as a bulking agent or biomass outlets

The plant also boasts an electrical control room, generator, and a large capacity fuel tank.

The Results

Ultimately, the Kiverco plant enables the EnVar site to produce a quality, PAS 100 & CQP certified soil conditioner for the agriculture and amateur horticultural markets. Now operating fully, the plant is contributing towards the site processing 105,000 tonnes of co-mingled food and green waste per year.

Richard Adcock, EnVar Site Manager said: "Kiverco has provided a robust solution with the lengthy lifespan we need. We have locally recruited 5 additional members of staff to assist with the plant, demonstrating how the system will increase our capacity levels. Working with Kiverco, EnVar can confidently look forward to a successful future."

John Lines, Sales and Marketing Director of Kiverco said: "It is always a pleasure to work with our customers and see in action the differences that our plant can make to the waste management process. As a company we strive to minimise the amount of waste that is sent to landfill and we hope to help EnVar continue to reach its full potential in the composting industry."



www.hub-4.com/directory/15003

INTRODUCING THE CITYEQUIP JAW CRUSHER

700 x 500 Jaw Opening / Diesel/Electric / 15 Tonne Weight
Available As Hook Lift or Tracked / Made In Germany

FROM
£125,000
+ VAT

Sole UK Distributor For:

cityequip
mineral processing

Riverside Machinery

Email: sales@riverside-machinery.com

Web: www.riverside-machinery.com

Main: +44 (0) 800 689 9024

Mob: +44 (0)7766 405688 - John (Southern UK)

Mob: +44 (0)7500 048985 - Ciaran (Northern UK)

**RIVERSIDE
MACHINERY**



RUD Chains Ltd Conveyor & Drive Systems for Bulk Materials Handling

RUD
Tradition in Dynamic Innovation

- BULKOS Conveyor systems: scraper, screw, drag chain conveyors & apron feeders
- Standard & tailored conveyors, bucket elevators & spare parts available
- Horizontal & vertical bulk handling capabilities
- BULKOS drive systems for lifting, moving, telescoping & sliding
- CRATOS conveyor systems: fuel handling: coal feeders & de-ashing systems

www.rud.co.uk 01227 276611

RUD Chains Ltd, Units 10-14, John Wilson Business Park, Thanet Way, Whitstable, Kent, CT5 3QT

TDS V20 - One pass shredding with application flexibility is the perfect combination



Terex Environmental Equipment's drive to introduce new technology to the waste processing market is shaping the industry for years to come. This is no more evident than the partnership between Terex and leading German Shredder manufacturer Vecoplan, creating an industry first mobile medium speed shredder. This double shaft machine with shaft speeds of up to 168rpm and a highly accurate cutting action creates minimal fines, while replaceable sizing screens control the maximum size of the product generated. The intelligent tramp material protection system gives operators the necessary confidence when unsuspected contaminants appear in the feed material. This unique combination of features have helped launch this machine to the market place with great results.

Terex Environmental Equipment's dealer network have undertaken an aggressive demo tour schedule to let customers see first-hand the machines capabilities and fully appreciate the benefits it can bring to their businesses. Terex fully understand that customers want the security of seeing the machine function in their own surroundings and have the chance to operate the machine before making an investment.

A growth market within the UK, which is creating a lot of interest for the machine, is biomass production from pre-sorted waste wood. Traditionally operators have used a slow speed shredder for pre shredding, a high speed shredder for accurate size reduction and a trommel to remove unwanted fines. The features of the TDS V20 allow this process to be performed in a single pass greatly reducing the creation of unwanted fines and operating overheads.

The versatility of the TDS V20 to perform equally well in RDF and SRF production, green waste shredding, tyre shredding, hard plastic shredding is another key advantage to the machine. Operators need to know that they can get maximum productivity from their equipment and ultimately run a more cost effective and efficient business.

To find out more about the TDS V20 and find your nearest dealer please visit www.terex.com/environmental-equipment



www.hub-4.com/directory/17072

New Trackstack 6542TPS Tracked Picking Station

A new Trackstack 6542TPS has recently been installed in France. The 6542TPS is a Tracked Mobile Picking Station designed for recycling operators needing mobility between various sites. This new upgraded model is now under 3.4 metres for easy transport across European markets.



Based on the design of the proven 6542 the new generation 6542TPS is designed for greater capacity, lower operating costs, with the added benefits of being transport friendly with an even quicker setup time. This model includes a direct feed hopper that can be fed by wheeled loader or excavator. With a covered 4 person picking bay and variable speed belt, operators can work in a safe and clean environment.



Summary of Key Features:

- Cast Iron pump and Internal drive gearbox at conveyor head, providing 3.5 times more torque than standard setups.
- Can Start Belt When Full
- High Powered Caterpillar 130HP Engine
- Large Capacity Hopper
- Long Conveyor Giving Greater Stockpile Capacity
- Excellent Mobility and Quick Setup Time.

Summary of Key Benefits:

- Flexibility to Move Picking Station Where Demand Requires.
- Ability to Use for Stockpiling Duties.
- Reduced Operator Costs
- Improved the Consistency of Material
- Cleaner Stockpiles



www.hub-4.com/directory/819



TEREX
Environmental Equipment

Ecotec

TDS V20

MEDIUM SPEED SHREDDER

*Product Sizing Screen • One Pass Production
Reduced Operator Costs*



REVOLUTIONISING MOBILE SHREDDING

www.terex.com/environmental-equipment



THE PORTAFILL 3000 TRACKED SCREENER NORTHERN IRISH ENGINEERING AT IT'S FINEST

10ft x 4ft Screenbox / Available with full washing system / Deutz Power / Transports in a standard shipping container



**FROM
£68,000
+ VAT**

Sole UK Distributor For:



PORTAFILL

**RIVERSIDE
MACHINERY**

Riverside Machinery

Email: sales@riverside-machinery.com

Web: www.riverside-machinery.com

Main: +44 (0) 800 689 9024

Mob: +44 (0) 7766 405688 - John (Southern UK)

Mob: +44 (0) 7500 048985 - Claran (Northern UK)

High volume project calls for Terex Finlay 883+ at John F Hunt Remediation.



A leading South East-based land remediation specialist has taken delivery of a new Terex Finlay 883+ to power through high volumes of material produced from a major project.

John F Hunt Remediation has a long-standing relationship with Finlay Group and has hired Terex Finlay 883's for a number of years.

Now the company - which has its headquarters in Grays, Essex - has opted to purchase the new plant, based on the past performance of the machinery and the service and support received on site.

Supplied by Finlay Plant South East, part of the Finlay Group of companies, the machine is already proving its worth - recording high output levels and powering through 200,000m³ of soil.

Ben Williams, MD of John F Hunt Remediation, said: "It made commercial sense to purchase the 883+ after we secured a significant contract.

"The machine is currently handling high volumes of soil, which it is processing down to 20mm.

"It's a robust piece of equipment that comes with a solid aftersales service from Finlay Plant South East.

"It's working very well on site."

John F Hunt Remediation offers a comprehensive service that includes ground contamination solutions, as well as environmental and remediation contracting and site remediation.

It is part of the John F Hunt specialist group of construction-related companies, a multi-disciplinary organisation that provides additional specialist services and resources including demolition, concrete cutting, asbestos surveying, removal and management, lifting equipment, power services, heavy plant and tool hire.

The scope and scale of the company enables it to continuously invest in high performance machinery.

Leon Sheehy, MD of Finlay Plant South East, helped John F Hunt Remediation specify the 883+. He said: "The 883+ is a versatile machine, which is renowned for its reliability and power.

"It is meeting the demands of the contract and proving an important asset to the company's operations."

The Terex Finlay 883+ has the capacity to process at a rate of up to 500 tonnes per hour and has been designed to work on its own or after a primary crusher.

Applications include quarrying, mining, topsoil, recycling, sand, coal and aggregates, as well as construction and demolition debris.

The plant features a modular configuration screen box with a 16'x5' top deck and bottom deck screen, with additional features such as a cassette option and tines and mesh for the top deck.



www.hub-4.com/directory/1824

The Haas installation



CRS Ltd Purchase a Haas Tyron Shredder



Marty Morris Trade Balers Ltd MD (left) & Sean Conlon CRS Ltd MD.

CRS Ltd has recently purchased a Haas Tyron Slow Speed Shredder from Irish authorised dealer, Trade Balers Recycling Machinery Ltd based in Dungannon Co.Tyrone.

CRS Ltd facilities are located in Carrickmore, Co. Tyrone, Northern Ireland which is in the heart of Europe's leading Engineering hub. CRS specialise in the innovative design and manufacture of Material Recycling Facilities (MRF).

Sean Conlon, CRS MD, explains: "I had been hearing more and more about the Haas shredder and decided to go and see it perform when it was in Ireland recently on demonstrations. Straight away I knew there would be a hire market for the machine, due to its high adaptability."

Trade Balers Ltd, provide a complete range of new and refurbished recycling equipment throughout Ireland and the UK.

Marty Morris MD Trade Balers added: " This is the second sale in Ireland for the Haas range, adding to the Tyron 1500 Shredder and full hammer mill installation at R.T.D. Crawford's , Irelands largest machinists of imported timber who also produce animal bedding and heat logs"

The Haas Tyron 2000XL is a slow speed shredder, designed for a large variety of waste streams. The Tyron differentiates itself from other shredders in the market mainly due to its independent shaft drive mechanism. Each shaft is driven by a separate hydraulic motor with a separate hydraulic gear box, meaning the shafts are driven separately with respect to RPM, as well as shaft direction. Shredding the most stubborn of material, whilst keeping the shafts clean from wrappage, is therefore made possible.

Ben McQuaid, Matpro Machinery Ltd, business associate and fellow Haas distributor commented: "Our Anglo-Irish strategy continues; low overheads, low margins and high volume of sales and here it is in black and white."

For more information on Haas products or any waste processing equipment, please visit www.tradebalers.com (Ireland) www.matpro.co.uk (UK)



www.hub-4.com/directory/12773

Auto recycling steps up a gear at CARS 2016

The Complete Auto Recycling and Secondary Materials (CARS) trade show, Europe's premier event for auto recyclers and material processors, comes to Donington Race Track in 2016.

Auto recyclers, materials processors, transport companies and professionals working in the recycling and waste management sector, are among over 2,000 key players set to attend the CARS trade event on 13-14 July 2016.

Taking place at Donington Park Circuit, Derby, the Complete Auto Recycling and Secondary Materials (CARS) trade show is Europe's premier event for auto recyclers and material processors. Free to attend, it is the only event of its kind, asked for by the industry, and covering all aspects of the sector.

Exciting features include the indoor exhibition showcasing the latest machinery and services, live outdoor demos, circuit racing, a Skills Lab with practical advice from expert trainers, and access to the Conference Theatre to share best practice with a line-up of influential speakers.



Steve Eminton, editor with show organiser, Environment Media Group, said: "Tailored for all those involved in the process of turning vehicles back into products or materials - including auto dismantlers, transport companies, trade associations, materials processors, and salvage yard operators - CARS has it covered!"

The CARS show provides an excellent opportunity for all those working in the auto sector to find out what products and services are available to make their business more successful. Co-located with the Metals Recycling Event, it's the ideal platform to network and boost the efficiency and performance of the auto recycling sector."



Held biennially, the CARS show is always a huge success, furthering attendees' knowledge and creating new opportunities. In 2014, the event attracted over 75 exhibitors and more than 1200 attendees from across 25 countries including India, Japan, Germany, Australia and the USA.

Live Demonstrations

A key feature of CARS 2016 is the outdoor demonstration area, featuring practical applications of products and machinery in their intended environment. Products on show will include machines involved in CAT recycling, engine cracking, wiring loom granulation, wheel ripping and car baling. Visitors will find the latest technology designed to make operations easier and more efficient.

Conference Theatre

Visitors are invited to attend the packed itinerary of sessions covering hot topics such as:

- Increasing Profits by Engaging and Selling Online
- The Impact of Market Forces
- The Direction of the Second Hand Parts Market
- The Future of Material Technology
- The Salvage Code of Practice.

Skills Lab

Meet likeminded peers, improve techniques, increase your knowledge of best practices and gather ideas to inspire you to improve your programmes. Sessions will cover:

- Dealing with Airbags
- LPG Recovery from End of Life Vehicles
- Hybrid Batteries: Safety Checklist
- Depolluting Air Conditioning Units.

Donington Park Testing Day

Visitors who hold an MSA competition licence are invited to bring their car and race around Donington's world famous circuit on 13 July. Those signing up for this spectacular experience also receive VIP parking at the CARS trade show.

On the night of 13 July, a Gala Dinner provides a relaxed, friendly atmosphere to meet friends and colleagues, make some new contacts and perhaps open doors to new possibilities. Tickets for the dinner cost £75.

To register for a FREE ticket, book a stand or explore sponsorship packages for CARS 2016, visit www.cars-expo.com, call 020 7633 4500 or email info@cars-expo.com



TWO SHOWS, ONE VENUE.
SECURE YOUR FREE PLACE AT EUROPE'S PREMIER EVENT FOR AUTO AND METAL RECYCLERS.



INDOOR AND OUTDOOR EXHIBITION

INTERNATIONAL CONFERENCE PROGRAMME

LIVE DEMONSTRATIONS

GALA DINNER

SUPPORTED BY



REGISTER FOR YOUR FREE TICKET

020 7633 4500 | INFO@CARS-EXPO.COM | INFO@METALSRECYCLINGEVENT.COM

WWW.CARS-EXPO.COM | WWW.METALSRECYCLINGEVENT.COM

OPTIMUM METAL RECOVERY



MAGNETIC
DRUMS



OVERBAND
MAGNETS



METAL
DETECTORS



EDDY CURRENT
SEPARATORS



WWW.ERIEZ.COM

ERIEZ MAGNETICS EUROPE LIMITED

Bedwas House Industrial Estate, Greenway, Bedwas, Caerphilly, CF83 8YG, UK

T: +44 (0)29 2086 8501 | E: info@eriezeurope.co.uk

Suspended Overband Magnets separate Eriez Europe from the competition



Unwanted and potentially damaging tramp iron is a widespread problem throughout the recycling and material processing industries. Eriez Magnetics Europe is able to provide a rapid, cost-effective solution with their range of popular suspended overband magnets, which are available for immediate dispatch to customers.

Eriez Europe supply over one hundred robust, competitively-priced suspended magnets every month to customers throughout Europe who have a need to successfully remove tramp iron and for maximum protection of downstream machinery - all manufactured at their European headquarters in South Wales, UK.

Eriez' CP magnets offer the ideal solution for general tramp iron removal, whilst the innovatively-designed TP range offers improved separation performance and ensures that ferrous material is lifted horizontally to provide maximum protection against long, thin, sharp metals, such as nails and screws, that could potentially cause unwanted damage to the self-cleaning belt. All models in the Suspended Magnet range require minimal maintenance and allow for ease of installation into both new and existing plants.

Available in both CP (Centre-Pole) and TP (Twin-Pole) configurations to meet a range of varying belt widths and configurations, customers are able to order from stock for immediate dispatch to prevent prolonged operation downtime.

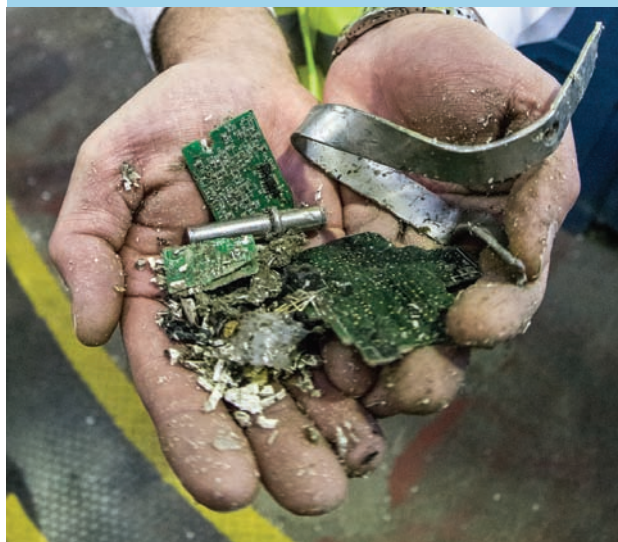
Eriez offer a complete range of ferrous and non-ferrous metal separation solutions for the recycling industry, including Eddy Current Separators, Drum Magnets, Pulley Magnets, and Metal Detectors. With over 40 years of experience, Eriez work with some of the largest recycling companies in Europe as well as many smaller MRF site operators to provide metal separation equipment. The purpose-built Recycling Centre at the European Headquarters is fully-equipped with the company's full range of recycling products to allow customers to visit with bulk samples of material to determine which combination of machinery is the best fit for their waste processing needs.



www.hub-4.com/directory/280

New Magnetic Separator Recovers Printed Circuit Boards

Bunting Magnetics has developed a new Magnetic Separator that separates and recovers Printed Circuit Boards (PCBs). The High Intensity Separation Conveyor (HISC) has an exceptional strong magnetic head pulley and was originally designed to separate very weakly magnetic materials such as abraded and shredded stainless steel. During on-site tests at a UK plastics recycling company, the HISC was also found to efficiently separate and recover PCBs.



The separation of Printing Circuit Boards is an issue for many recycling companies, especially those involved in WEEE (Waste Electrical and Electronic Equipment). PCBs contain a number of components mounted on a non-conductive substrate including capacitors, resistors and active devices. A PCB will contain gold, palladium, silver, copper and different hazardous materials, and cannot be disposed of in landfill. Once recovered, there are companies who specialise in recovering the precious metals from the PCBs, but firstly, these need to be recovered from a waste stream.

Bunting's HISC Magnetic Separator is commonly installed after primary Magnetic Separation and Eddy Current Separation and is used to either remove weakly magnetic materials from the primary product to produce a clean recycled material (eg UPVC window frames, recycled plastics, etc), or recover valuable materials (eg stainless steel and PCBs).

The strength of the magnetic field is far greater than standard magnetic separators, extending the separation capabilities from just removing ferrous and strongly magnetic materials to materials that have a very low magnetic susceptibility.

For further information on Magnetic Separators please visit contact our technical sales team on: sales@buntingeurope.com, call us on 01442 875081 Visit www.magneticseparation.co



www.hub-4.com/directory/15595



UK Designed & Built

Dry Bulk Materials Handling Equipment

Design & Supply Specialists

Quarrying | Cement | Minerals
Processing | Biomass
Water Treatment

THE BRITISH
ASSESSMENT
BUREAU
ISO 9001
Certification No.
197534

Unit 10 Brunel Court, Waterwells Business Park, Quedgeley, Gloucester, GL2 2AL United Kingdom
www.sneng.co.uk | sales@sneng.co.uk | +44 (0)1452 725210



DUST
FILTRATION



SCREW
CONVEYING



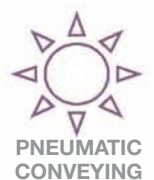
STORAGE
SILOS



LOADING
BELLOWS



MIXING &
BLENDING



PNEUMATIC
CONVEYING

Cubby Construction Ltd invest in a new Portafill 3000 Screening Plant



Riverside Machinery Ltd, have recently delivered a new Portafill 3000 to Cubby Construction Ltd

Cubby Construction Ltd, a Carlisle based company, are a multi-disciplined organization specializing in construction, civil engineering and housing since 1968.

The decision was made to purchase a Portafill 3000 after Cubby Construction was successful in winning several high profile jobs to supply top soil and single sized aggregates.

The Portafill 3000 ticks the box in a number of areas. The benefits of this machine include:

- The compact nature of the machine, weighing only 12 tonnes.
- The ability to fit a washing system to the screenbox, as and when required.
- Last but not least the ability to use the machine in a 2 - fraction format.

John O'Neill comments "this is Cubby Construction's first screening plant and we are delighted they were able to see the huge benefits the Portafill machine offers. We look forward to a great relationship with them".



www.hub-4.com/directory/12459



The Importance of High Quality Fall Protection Anchorage Points

Ultimate Safety working at Heights with RUD Fall Protection Anchorage Points

According to RIDDOR falls from height were the most common cause of fatalities from 2013/2014, accounting for nearly three in ten (29%) fatal injuries to workers than any other injury kind. The importance of safety working at heights and the use of top quality fall protection equipment is clear to see from the figures above.

As a leading manufacturer and supplier of over 500 different tested and certified lifting/lashing points, RUD take the safety of their products very seriously and are continually innovating and developing their products to meet the highest safety standards.

Safety is imperative when working at heights and across potentially hazardous working environments. RUD fall protection anchorage points provide an ultimate safety factor by permanently attaching to structures where frequent fall protection is required. They are used across a wide range of industries when working at height from; the rail sector to bridge construction, construction and wind tower installation and maintenance to name a few.

The RUD fall protection anchorage point range consists of the PSA-VRS (STAR-POINT) and the PSA-INOX-STAR. These anchorage points are not lifting points of the traditional type; they are designed as fixing points which means that they can be used as personnel protection equipment.

RUD Chains Fall Protection Anchorage Points have been certified successfully by the Employers Liability Insurance Association and the Building Industry (BG Bau). The components correspond to the European Directive for "personnel protection equipment" (89/686/EEG) and are marked with the CE-Stamp as well as with the number of person (1 or 2 persons) which can be carried.

The INOX-STAR RUD lifting point offers many distinctive features to the user. It can be used as an anchor point for personal protective equipment acc. to DIN EN 795, certified by the German BG BAU (Employer's insurance association of the building industry). It offers an impressive 50% higher working load limit than the DIN eye bolt and can be turned and adjusted to any load direction 360°. The INOX star is 100% crack detected and offers a high resistance to corrosion.

The PSA STARPOINT is also used as an anchor point for personal protective equipment acc. to DIN EN 795. It offers a safety factor of 4:1, made from forged material 1.6541, is high tensile quenched and tempered and 100% electromagnetic crack inspected according to En 1677-1.

RUD are continually innovating and developing their extensive product range to stay at the forefront of their customers' demands and safety requirements. Help ensure your workers safety when working at heights with RUD's Fall Protection Equipment.



www.hub-4.com/directory/16614



RUD Chains Ltd Tyre Protection Chains Offer Maximum Traction & Resistance

- Reduce operating costs, decrease downtime & increase productivity
- Maximum traction & resistance due to robust chains three wear levels
- RUD chains help extend tyres life by a factor of ten
- Sideflex NEW Sidewall Protection device offers ultimate sidewall protection
- Wide range of TPC for Quarrying & bulk materials handling

www.rud.co.uk 01227 276611

RUD Chains Ltd, Units 10-14, John Wilson Business Park, Thanet Way, Whitstable, Kent, CT5 3QT



WORSLEY PLANT

LEHNHOFF VARIOLOCK FULLY AUTOMATIC QUICKCOUPLER SYSTEM

Changing any attachment is effortless, safe and fast

- Change large hydraulic attachments without changing hoses
- Save time changing between hydraulic attachments
- No need to leave cab (more safety and comfort for the operator)
- No possibility of oil spills while changing hoses
- Reduced possibility of dirt entering the hydraulic system

from grab to
shear in just
**15
secs**



EASY CLEANING ● EASY SERVICE ● MAXIMUM OIL FLOW

THE ATTACHMENT SPECIALIST

SEPARATION/CRUSHING/MIXING/WASHING/SCREENING/RECYCLING/DEMOLITION

01606 83 55 44
www.worsleyplant.co.uk



Rapid Gears Up for a Busy Tradeshow Season.

February marks the start of an exciting tradeshow season for Rapid with World of Concrete in Las Vegas, 2-5 February 2016. World of Concrete attracts approximately 1,450 exhibitors and occupies more than 675,000 square feet of indoor and outdoor exhibit space. Exhibitors include original equipment manufacturers from around the world and exclusive U.S. distributors of equipment, tools, products and services for the commercial construction, concrete and masonry industries.



Following on from World of Concrete is The UK Concrete Show at the NEC, Birmingham, 17-18 February 2016. The UK Concrete Show is Europe's largest specialist concrete show, with over 200 exhibitors from across the globe.

Next is the world largest tradeshow, Bauma, which takes place at Messe Munchen, Munich, 11-17 April 2016. Bauma unites all branches of the construction industry in one venue with over 75,000m³ of exhibition space and 3,421 exhibitors from 57 countries.

Rapid's trade show season finale takes place at Hillhead, at Tarmac's Hillhead Quarry, near Buxton on 28-30 June 2016. Hillhead is a large outdoor show featuring exhibitors from mineral products, construction and recycling industries. Hillhead is renowned for its live demonstrations, offering a unique opportunity to view a wide range of heavy plant and machinery not typically on display at traditional trade shows. Rapid's latest innovation, Trakmix, will make its official tradeshow debut at Hillhead. Launched in July 2015, Trakmix is a track mounted, totally mobile and self-contained, fully weighed high volume mixing plant and was designed in response to the growing demand for a mobile continuous mixing plant that provides easy, cost effective transportation and eliminates the need for special transportational permits. Customer demand also indicated a need for a machine providing more options on outputs on a different platform, offering flexibility for a wide range of site types and applications. TRAKMIX is recommended for applications where all types of binders or neutralising powders are required in the mixing process, including road construction, road paving, ground works/civil engineering, environmental stabilisation projects, aggregate recycling and many more.



www.hub-4.com/directory/5066

New ICE-LBG-SR Safety Turning & Rotating under full load without any chance of a bolt opening

Ultimate Safety in Lifting with RUD Chains:



When undertaking heavy lifting projects it is important to use top quality lifting points, as well as it being a legal requirement. Quality lifting points enable a range of lifting processes to occur safely and smoothly from production, assembly, to the end customer. Without the appropriate lifting equipment projects can experience costs in potential damages to the goods and accidents to the operator, all resulting in overall additional costs.



RUD is known for their innovative lifting points which are used across a wide range of industries from construction, manufacturing, materials handling to engineering and offshore to name a few. Product development and innovation is key at RUD which can be seen in one of their latest innovations, the new ICE-LBG-SR load ring.

VLBG load rings offer the advantage of an unsymmetrical force introduction, meaning it always adjusts itself to the pulling direction of the load. Consequently, avoiding any unintentional opening of the load ring, which can occur with DIN 580 / standard eye bolts.

RUD VLBGs adjust themselves in the force direction without loosening to the bolt. However, lifting points are often used for turning, rotating and tilting which adds a considerable risk to the lift. When lifts are turned under full load it results in high friction between the bolt head and the rotating connecting element, which subsequently can lead to the opening of the bolt mid lift.

The NEW "ICE-LBG SR" load ring offers an innovative double ball bearing technology which means that lifting, turning or rotating under full loads, vertically or horizontally can now be done safely without any chance of the bolt opening mid lift. The "ICE-LBG SR" therefore offers an ultimate safety factor to the user and the equipment.

The demand for safety lifting and turning at high working load limits resulted in the creation of the completely new bolt quality, the RUD "ICE bolt". RUD developed the revolutionary patented fine grain steel, which offers an unbelievable impact strength of 56 Joule at temperatures as low of -60°C. It also offers the same insensitiveness against hydrogen embrittlement as an 8.8 bolt.

The RUD ICE-LBG-SR load ring with its ground breaking double ball bearing technology and robust ICE bolt has solved a real problem in the industry. It has provided an ultimate safety factor when lifting, turning, rotating and tilting under full loads. The bolt will securely stay firmly fastened under full loads, vertically or horizontally. Ensure safety to your goods.



www.hub-4.com/directory/16614



The original + still the best



Bespoke
chain for
any industry



Fast turnaround
in breakdown
situations



Over half a
million feet
of chain in stock



Thousands of
cast & steel sprockets,
slats & attachments



Technical
expertise provided
as standard



Shipping
across the
globe

For over 25 years Chain + Conveyor has delivered innovative solutions in conveyor & elevator chain. We've met the challenges of many industries, and we're still doing it today. So for the industry's best chain products, delivered by the very best in the business...

call **01565 830747**, e-mail sales@chainandconveyor.com or visit www.chainandconveyor.com

Waste & Recycling + Solids & Bulk Handling + Mining & Quarrying + Asphalt & Cement +
Grain & Milling + Bakery + Automotive + Agriculture + Water Treatment + Swarf Handling

@chain_conveyor
 chain-conveyor

VULCAN BURNERS

Efficient Green Performance

- Proven fuel costs & emission reduction
- Raising the standard in asphalt production
- The new burner range from Asphalt Burner Services Ltd

Asphalt Burner Services

Unit 3B, Loves Hill, Castledawson, Magherafelt
Northern Ireland, United Kingdom, BT45 8DP

T: 084 5519 3033 Int T: +44 28 9095 0007

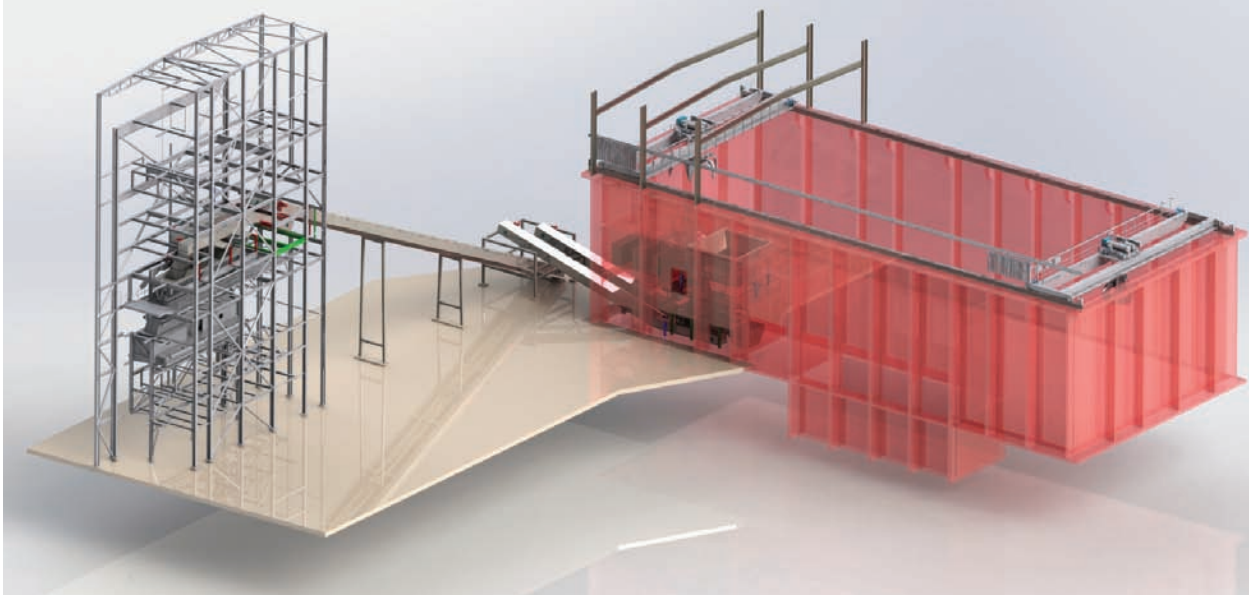
E: sales@vulcanburners.com

www.vulcanburners.com



Saxlund Takes 4 M EUR Order for Biomass Handling System in Sheffield

3D drawing of proposed Saxlund biomass fuel storage and feed solution at Templeborough Sheffield



Matt Drew, MD of
Saxlund International

Southampton, 14 December 2015: The Saxlund Group, has received yet another high profile order from Babcock & Wilcox Volund A/S, Denmark. The order is for the delivery of a state-of-the-art biomass handling system to the Templeborough Biomass Power Plant in Sheffield, UK.

The scope of Saxlund's order is the design, manufacturing, delivery and commissioning of a dual automatic fuel handling system with reception and transport lines to the boiler, complete with cranes.

The entire fuel feeding system, including wood storage and conveyor systems will be designed for multi-fuel waste wood, designed for efficiency, minimum maintenance and high availability as well as low emission of dust and noise. Total order value is over 4 million EUR (close to 40 m SEK) with commissioning and take-over in 2017.

Matt Drew, European Sales Director and UK Managing Director Saxlund International commented: "Biomass fired combined heat and power (CHP) solutions using low grade waste wood have a real part to play in meeting the UK's 2020 renewable energy targets and Templeborough Biomass Power Plant in Sheffield is a great example. With extensive operations in Germany, the UK and Sweden and with some 60 years of experience, we can offer innovative and well-tested solutions within most applications."

Drew continued: "Saxlund has been contracted to design and install the fuel handling solution which will provide fuel reception, storage and conveyor systems to handle 260,000 tonnes per annum of locally sourced waste wood, to feed the combustion processes. This is our second UK biomass fuel handling contract this year with Babcock & Wilcox Volund, and once again this demonstrates our ability to deliver collaborative international projects combining our engineering and design disciplines in Germany, Sweden and the UK. Due for completion in 2017 the new plant is expected to produce 41MW of green electricity, enough to supply 78,000 homes."

Drew added: "The Templeborough Biomass Power Plant has a multi-million pound long term deal with Stobart Biomass Products to source, process and supply the biomass feedstock for the plant. Schemes like these have the potential to tick all the boxes - contributing to UK renewable energy targets and a balanced energy economy, as well as waste recycling targets."

Within the bioenergy sector, Opcon offers everything from the design of complete combined heat and power (CHP) plants to handling systems and incineration plants under the Saxlund brand. Under the SRE brand, systems are supplied for treatment and improved energy efficiency for bioenergy-powered district heating plants, sawmills, pellets producers and commercial greenhouses. The offer also includes flue gas condensation equipment for industrial activities.



www.hub-4.com/directory/10149



Precia-Molen provides faster and more efficient weighing for the Southampton Grain Terminal

Precia-Molen has recently installed a new ABS-XI14 hopper scale and associated software which has increased efficiency in a busy grain operation situated within Southampton Docks in the UK.

History:

The first grain silo at Southampton was originally constructed in 1982 by a consortium of five members who initiated the project in response to the increasing surplus of UK produced cereals. This original silo comprised of 8 concrete silo's with a capacity of 11,000 tonnes and was commissioned in July 1983 in preparation for the harvest that year.

In 1986 a second storage capability was constructed, providing an extra 9 cells comprising of 15,400 tonnes which was operational from 1987.

In 1992 one of the original consortium, Soufflet took control of what was then Southampton Grain Silos and it became a wholly owned subsidiary. At this time Soufflet were the largest procurer of farm sourced grain in France and also the main supplier of fertilizer to French farmers.

The final chapter of the story came in 2004 when Banks Cargill purchased 50% of the business from Soufflet in a joint venture with the operation being renamed as Southampton Grain Terminal (SGT). Banks Cargill subsequently became Frontier Agriculture.

The replacement:

The existing mechanical Hopper Scale AB12 was supplied by Precia-Molen in 1982 and designed to operate at a maximum throughput of 950tph, which over time, as the conveyor system has been upgraded to operate at greater than 950tph, the AB12 became increasingly un-reliable.

David Coleman - Silo Manager, commented, "We had a lot of issues with the old scale and made a decision to look for a replacement. We looked at the market and chose Precia-Molen and decided after consultation to invest in an ABS-XL14 model which would give us around 1000tph flow."



With the order placed and a time constraint with the harvest taken into consideration, the bulk scale had to be fitted into a production window with a lead time of around 16 weeks in the French factory.

With the physical size of the new ABS-XL14 being smaller than the old mechanical one, on-site changes had to be made on-site to accommodate the new scale. This meant that a large hole had to be cut in the side of the concrete silo.

As a result a specialist contractor - Grintec of Melksham was awarded a joint contract for the civil and mechanical installation.

Dave further commented, "Grintec had to cut a 4 metre square hole, 15 metres up through a foot of concrete to allow the old 5 tonne machine to be extracted. The project required scaffolding and a crane to remove the old machine, which in itself is quite unique in the UK and certainly a feat of engineering. As we already had a good working relationship with Grintec we had the utmost confidence in giving them the project."

Operation:

The weighing cycle is broken down into 4 phases. When the cycle starts, the electronic system checks that all start-up conditions are satisfied.

A 45 tonne hopper directly above the scale feeds into the upper bin of the weigh hopper. This upper bin provides a constant supply of product to the scale and can feed up to a total of 7.5 tonnes when the feed gate then closes and the gross weight is saved

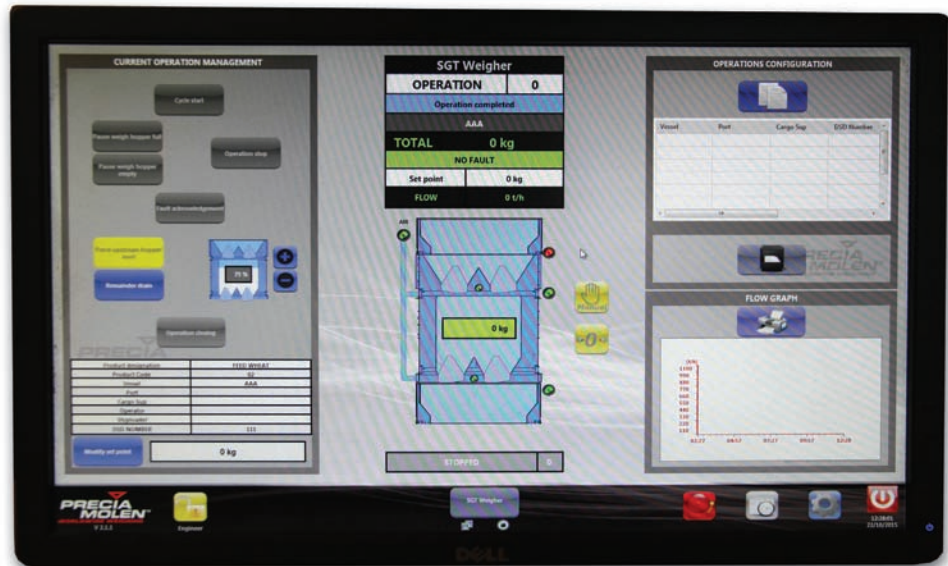
The ABS-XL14 feed into the weigh hopper is fitted with bellows to facilitate the removal of air from the chamber whilst loading. When the sensor feels it is getting 'fluffy' it then weighs whatever is caught inside at that time.

Batching is ideally 5.3 tonnes which is recorded by the four load cells. This takes seconds and then the grain is discharged by opening the gates below into the bottom section. Here the net weight is calculated, updating the totaller displayed on the I 410 ABS terminal.

The grain is then discharged; the bottom gates close and the process starts again. All weighed material then feeds into a 15 tonne bottom hopper which feeds onto a conveyor belt, which in turn feeds the ship loader.

The I 410 ABS system at SGT is a I 410 TB ABS transmitter fixed to the scale, which completes the Analog/Digital conversion of the signal from the load cells and transmits the weight measurement to the I 410 ABS terminal via a CAN OPEN fieldbus.

Since the installation, the new ABS-XL14 has improved the silo efficiency and reliability. The ABS-XL14 incorporates Precia-Molen's unique electronic self-checking scale system.



The SCS system involves the use of a second independent weighing system with four load cells and A/D Converter. The weighing are measured by the slave weighing system and are compared with the weights measured by the master weighing system, removing any risk of gradual drift. This provides an absolute guarantee of constant weighing precision for the entire duration of the operation.

David, continued, "The whole system supplied by Precia-Molen is faster, more accurate and more efficient. Loading can be anything from 1200-50,000 tonnes and as an example we would start to load a 4,500 tonne vessel at 7.00am finishing around 2.00pm. Every 16-22 seconds it will weigh 5.5 tonne which in real terms means we are saving an hour compared to the old machine."

A total success:

David, continued further, " It took us some time to agree on a schedule, but once we had accurately determined the length of each stage and the lead time of the new machine we managed to complete the installation before harvest and it was delivered on time and installed within budget. Commissioned on a Friday and operational on the Monday, it is a credit to the engineers from Precia-Molen and Grintec."

With a short term storage capacity of 30,000 tonnes the terminal can be a very busy place when a vessel is being loaded. All of these deliveries arrive from inland farms and stores and each truck is weighed on a 32 year old Precia-Molen EBV weighbridge's which since installation has completed around 20 million tonnes of accurate weighing!

Exhibitions & Events Diary



11.-17. April, München

BAUMA 2016

11-17 Apr 2016
Munich, Germany
www.bauma.de



CARS

13-14 July 2016
Donington Park Circuit
Derby



SCOTPLANT

22-23 April 2016
Royal Highland Centre, Edinburgh
www.scotplant.com



POLLUTEC 2016

29 Nov - 2 Dec 2016
Lyon, France
www.pollutec.com



resources. innovations. solutions.

IFAT

30 May - 3 June 2016
Munich, Germany
www.ifat.de



CONEXPO

7-11 March 2017
Las Vegas, USA
www.conexpoconagg.com



HILLHEAD 2016

28-30 June 2016
Buxton, Derbyshire
www.hillhead.com



CQMS 17

21 -22 April 2017
Co. Offaly, Ireland
www.machinerymovers.ie



HUB Features 2016

Global News & Information on the Quarrying, Recycling & Bulk Materials Handling Industries'

The HUB magazine is posted out to 6,000+ individually named recipients, and it is delivered to place of work, not their home address. This means that we get to end users and sites, and our 'pass-on' rate is currently at around 3 meaning that our estimated readership is 18,000 each quarter. Plus, our reader-ship don't have to pay any subscription to receive the Magazine.



March 16

BAUMA 2016

Show Preview

QUARRYING - Dump trucks, excavators & wheeled loaders. Tyres and tyre chains, wheel washing equipment.

RECYCLING - Excavator

Attachments, Screening Buckets, Crushing Buckets, safety couplers, Grabs, Pulverisers and Shears.

BULK HANDLING - Storage & handling, level measurement & control - hoppers, feeders and chutes.

Editorial copy deadline 5th March 2016

Advert copy deadline 15th March 2016



May 16

HILLHEAD 2016

Show Preview

IFAT 2016

Show Preview

QUARRYING - Tier 4 Engine Technologies and Associated Equipment, Dual Power Technologies. Health & Safety equipment and technology. Vehicle Reversing and Camera Safety.

RECYCLING - Waste sorting and separating equipment and solutions for the waste industry.

BULK HANDLING - Conveyors, stackers, stockpilers, elevators, feeders, chutes & hoppers.

Editorial copy deadline 5th May 2016

Advert copy deadline 15th May 2016



July 16



RWM 2016 Show Preview

QUARRYING - Mobile and static crushing and screening equipment. Crusher spare and wear parts. Screens and screen media.

RECYCLING - Shredders, Grinders & associated technology. Recycling of plastics.

BULK HANDLING - IBCs and FIBCs - technology for weighing, filling and processing screw, pipe and pneumatic Conveyors, silos, blowers, valves and discharge systems.

Editorial copy deadline 5th July 2016

Advert copy deadline 15th July 2016

September 16

QUARRYING - Construction and quarrying machine control systems, survey & positioning equipment and associated technologies. Pumps & associated technology. Dust Suppression and Control.

RECYCLING - MRF's and associated equipment in the waste process line, including trommels, magnets, air and ballistic separation technology. Recycled secondary aggregates.

BULK HANDLING - Port equipment, logistics, railways & associated technologies in the movement of bulk materials.

Editorial copy deadline 5th September 2016

Advert copy deadline 15th September 2016

November 16

IRISH Special -

Spotlight on Ireland

POLLUTEC 2016 Show Preview

QUARRYING - Asphalt & Concrete plant + associated equipment. Concrete retaining walls & storage solutions.

RECYCLING - Compaction, baling and wrapping equipment - waste compactors, cardboard balers, waste balers, vertical balers, horizontal balers, baling twine, balers, mill balers, baling equipment.

BULK HANDLING - Biomass industry equipment and technology. Processing of Energy from Waste.

Editorial copy deadline 5th November 2016

Advert copy deadline 15th November 2016



To reserve space or ask a question! **+44 (0)20 3637 0385** | sales@hub-4.com

NOW RECRUITING

BUSINESS DEVELOPMENT MANAGER EUROPE

BUSINESS DEVELOPMENT MANAGER AFRICA

SALES ENGINEER CRUSHER PARTS

SALES ENGINEER ASPHALT PLANT PARTS

COMPETITIVE SALARY, BENEFITS & OPPORTUNITIES FOR CAREER DEVELOPMENT

CMS Cepercor are Europe's leading aftermarket supplier of crusher, screen and asphalt plant spare parts supplying mining, aggregate, demolition and recycling industries worldwide.

We are seeking candidates looking for a long term career move (with opportunity for progression) with a growing and successful business based in Coalville, Leicestershire.

Remuneration packages will be competitive and commensurate with role and experience

If you believe that you have the skills and industry experience in any of the following roles we would encourage you to send us your CV to recruitment@cmscepcor.com



1 Vulcan Way, Coalville, Leicestershire LE67 3AP T. +44 (0) 1530 817 000

www.cmscepcor.com

The Genuine Alternative



INCREASE YOUR TRAFFIC

TRY THE HUB 'COMBO' PACKAGE

- Full Enhanced Business Entry in the HUB Business Directory
- Includes Enhanced Entry + six 1/4 page classified adverts in magazine, just £1100
- Optional design of advert £95

Prices exclude VAT



Transform site liabilities into environmental and financial assets

Do you have land that has been subject to mineral extraction, waste disposal or severe disturbance?



The 4R Group excel at providing cost effective site restoration schemes which can provide an income to the site owner

To find out more contact Paul Whyatt,
Land Restoration Manager

T: 0113 232 2400

E: info@4r-group.co.uk

A wide range of crushers for processing all types of friable and fibrous materials



BJD Crushers Ltd

T: +44 (0)1226 241 425

F: +44 (0)1226 296 713

E: sales@bjdcrushers.co.uk

www.bjdcrushers.co.uk

RIVERSIDE MACHINERY

Tel: +44 (0)800 689 9024 Mob: +44 (0) 7766 405688
Fax: +44 (0) 800 471 5099 Web: www.riverside-machinery.com
Email: sales@riverside-machinery.com



OVERBAND MAGNET

BRAND NEW,
Large Selection
In Stock, from
£3,550
+ VAT



FINLAY 393 SCREENER

Year 1997
£15,000
+ VAT



POWERGRID 800

Year 2002
£12,850
+ VAT



CITYEQUIP HOOK LIFT JAW CRUSHER

Year 2016, NEW
£136,000
+ VAT
£500 PER DAY
+ VAT



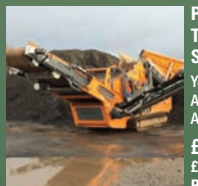
POWERSCREEN 615 TROMMEL

Year 2002, 40mm Punch Plate
£23,500 + VAT



VIBRATING GRIZZLY Year 2015

£5,250 + VAT



PORTAFILL 5000 TRACKED SCREEN

Year 2014, 500 Hrs,
As New Condition,
Available To Hire
£68,000 + VAT
£1,000 + VAT
PER WEEK



BACKERS STAR SCREEN

Year 2006
Refurbished
£38,000
+ VAT

SCG SUPPLIES Ltd

Quality Spare Parts for Crushing,
Screening, Recycling, Washing
& Shredding Equipment ..

www.scgsupplies.co.uk

- ▶ Guaranteed Performance Results
- ▶ Electric or Hydraulic Drive
- ▶ High Strength Magnets
- ▶ Fast Deliveries
- ▶ Competitive Prices

CONVEYOR MAGNET MANUFACTURERS

THE CONVEYOR PEOPLE

ConveyorTek Ltd

NI: 028 92 652666

ROI: 048 92 652666

E: sales@conveyortek.com

www.conveyortek.com

[conveyortek](http://conveyortek.com)

Clean wheels every time from the UK's No.1

- High pressure spray wash systems
- Cleartec water treatment
- Drive through baths
- Dry ramps
- Bespoke solutions
- Local support & aftercare

Celebrating
25 years
1990-2015

For sale or hire



01606 592044
www.wheelwash.com

wheelwash
wheel cleaning solutions

MASTER MAGNETS LTD

INCORPORATING METAL DETECTION LTD

BURNT MEADOW ROAD, NORTH MOONS MOAT, REDDITCH, WORCS B98 9PA

TEL: +44 (0)1527 65858

www.mastermagnets.com

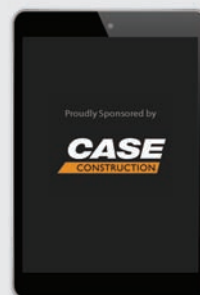
www.metalDetection.co.uk

DOWNLOAD THE **FREE** HUB APP TODAY



Available on the iPhone
App Store

ANDROID APP ON
Google play



Elite interlocking blocks

Now available with both short and long term finance options

Indicative 12 month Hire Purchase deals - £88 per month per £1000 which is 5.6%



Elite are the UK's premier manufacturer of the revolutionary Interlocking Block System as used throughout the UK in a wide variety of applications. The clever design (which incorporates a cast-in lifting pin flush with the concrete surface) allows the blocks to be easily dry laid onto any firm surface, creating bay dimensions to suit almost any site. Then they can be relocated or re-configured as your business needs dictate.

The blocks are also excellent in many varied applications and provide a more simple, robust and cost-effective solution than conventional L or A-shaped thin-walled panels.

Our Jersey and Temporary Vertical barriers are designed specifically as interlocking security barriers for use when there's a need to secure your premises against unwanted visitors or to manage site traffic.

Elite's devotion to exceptional customer service means that you can be assured of a next-day nationwide delivery service.

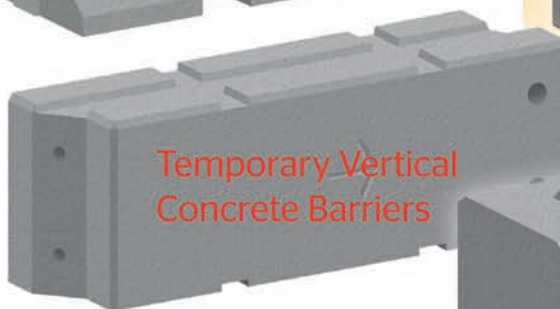
Please contact us today for more information or to get a quote.



Elite Precast Concrete Limited
Halesfield 9, Telford, Shropshire TF7 4QW
Tel: 01952 588 885 Fax: 01952 582011
www.eliteprecast.co.uk



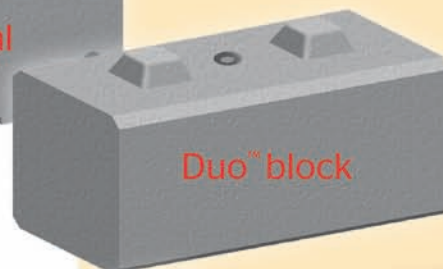
Jersey barrier



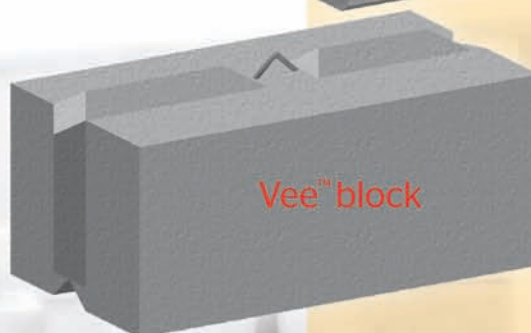
Temporary Vertical Concrete Barriers



Legato™ block



Duo™ block



Vee™ block



British made



Applications include...

Bay walls & bunkers

Push walls

Salt storage

Silage clamps

Radiation shielding

Kentledge/counterweight blocks

Embankment retention

Site security

Workforce protection

Ground safety