



Global News & Information on the
Recycling & Waste Management
industries

Recycling

Check out the very
latest industry news at
www.hub-4.com

RWM Preview 2012

See Bell at
RWM
Stand OA142
11-13 Sept

Bell Wheeled Loaders.

Exceeding your
expectations by the
bucket load.



BELL

0800 915 7700
sales@bellequipment.co.uk
www.bellequipment.co.uk



Strong Reliable Machines
Strong Reliable Support

New for
2013

HUBTM

Recycling magazine

Due to the on going success of the HUB magazine, we are increasing the coverage we offer the recycling and waste management industries.

Starting in February 2013 we will be producing a new quarterly magazine specifically showcasing equipment used in the recycling & waste management industry. This magazine will be in addition to our current magazine, which will then be focusing on the Quarrying and Bulk Materials Handling industries. For further information on this new magazine, including features and advertising please contact.

info@hub-4.com



In this issue

Chain + Conveyor	page 4
STAND 19Y43	
Bell Equipment	Page 5
STAND OA142	
Worsley Plant	Page 6
STAND 17B25	
RDS Technology	Page 7
STAND 19T58	
Pakawaste	Page 8
STAND 18H09	
John Moore	Page 10
STAND OA266	
Saxlund	Page 10
STAND 20J54	
Impact Air	Page 11
STAND 18J35	
Glen Creston	Page 12
STAND 20K74	
Bosch Rexroth	Page 14
STAND 17E48	
Mogensen	Page 14
STAND 18N09	
Mentor	Page 18
STAND 20D38	
Blue Group	Page 20
STAND OA160	
Master Magnets	Page 22
STAND 19V15	
Presona	Page 23
STAND 18M69-L68	
Middleton Engineering	Page 24
STAND 18K59-J58	
Duo Manufacturing	Page 25
STAND 17B39	
Max Solutions	Page 25
STAND OA196	
Eriez	Page 26
STAND 19P19-N18	
Kingfisher Industrial	Page 27
STAND 19N38	
Riverside Machinery	Page 28
STAND 20L05	



Hub Digital Media Limited

27 OLD GLOUCESTER STREET, LONDON WC1N 3AX



Recycling RWM Preview

Jane Layberry

Editorial & Operations Manager

Email: editorial@hub-4.com

Debbie Hodgetts

Sales & Admin Assistant

Email: sales@hub-4.com

Sarah Oldfield

Sales & Admin Assistant

Email: info@hub-4.com

Tel: 0845 680 0024



**RESOURCE EFFICIENCY & WASTE
MANAGEMENT SOLUTIONS**

NEC Birmingham, UK 11-13 Sept 2012

RWM in partnership with CIWM is the European event for resource efficiency and waste management.

Over 14,000 visitors, more than 650 exhibitors and 100-plus expert speakers meet to explore the latest industry developments that affect everyone from local authorities and landfills to retailers and recycling consultants.

Visitors also benefit from the largest collection of FREE and CPD accredited content, see What's On for more information.

A partnership for growth

In December 2010, answering calls from the industry, the Chartered Institution of Wastes Management (CIWM) and the Environmental Services Association (ESA), the organisers of Futuresource, and Emap, the organisers of RWM, joined forces to give the international recycling and waste management market this one major new exhibition.

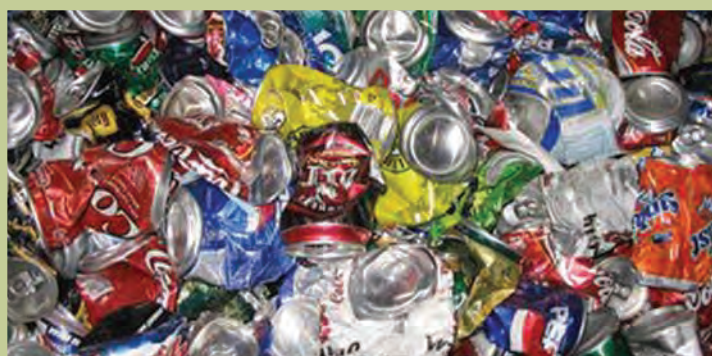
What's On

Visitors can benefit from a host of features related to waste and resource management taking place throughout the three days at the event. New to the event this year are the Materials Village and Social Enterprise Zone as well as an excellent networking opportunity in Speed Networking with RWM Connect.

The Conference Programme

RWM in partnership with CIWM hosts the most comprehensive conference in the industry, completely free to attend. The sessions are succinct, strategic reports and discussions from major opinion leaders and fully CPD accredited by the CIWM. Crucially, they are delivered in an objective and usable format, catering to seasoned experts as well as less experienced waste professionals. We have over 60 hours of CPD certified content.

Please view the sessions and full details on the RWM website.





Wheel of fortune at RWM

Chain+Conveyor's 'Sprocket of Fortune' game was such a crowd pleaser at Hillhead, will be used for the first time at RWM. Players will have the chance to win a number of prizes and be entered into a raffle to win the star prize.

Sponsored by Donghua, the Sprocket of Fortune game which attracted immense interest at Hillhead, will be used for the first time at RWM. Players will have the chance to win a number of prizes and be entered into a raffle to win the star prize.

This will be Chain+Conveyor's sixth year running at RWM and the show is a firm favourite with the company. Helen Stott, partner at Chain+Conveyor, explained: "RWM continues to be a key part of our events calendar providing a superb opportunity to talk to many of our existing OEM customers in this sector. It's an ideal venue to further demonstrate that Chain+Conveyor is the leading chain and sprockets supplier to the Waste & Recycling industry."

Chain+Conveyor is the UK's largest independent stockist carrying over 400,000 feet of British Standard and Metric conveyor chain and

thousands of cast and steel sprockets.

Together with an enviable reputation in the market for its customer service, their technical knowledge, and their extensive range of stock, Chain+Conveyor can provide a 'total solution'.

Damian Swindells, partner and general manager at Chain+Conveyor, said: "Over recent years, we've seen a growing requirement to provide re-engineering solutions. Using the technical knowledge and practical experience we've gained from over 15 years in the industry we help customers upgrade or change the use of their machinery or equipment."

Chain+Conveyor recently launched their new look website at Hillhead - www.chainandconveyor.com. The company is developing the website further to include a comprehensive, searchable product database and a Customer Area where registered users can access useful How To Videos and product information.

To find out how Chain+Conveyor can directly fulfil your chain requirements visit www.chainandconveyor.com or visit them on Stand 19Y43 at RWM in September.

Bell raises the bar at RWM 2012



Bell Equipment UK will challenge the industry at RWM to match the benchmark it has set with its ground-breaking range of wheeled loaders.

This year marks only the second time Bell has exhibited at RWM, having introduced its six-strong wheeled loader range to the UK only three years ago. The manufacturer will be exhibiting an L1204E and an L1506E loader, both with Hi-Tip buckets, on outdoor stand OA142.

Bell will be pushing three core benefits of its product, which it believes redefine wheeled loaders for the waste and recycling industry. These are:

QuadCool: The industry-leading cooling system which is unique to Bell loaders in the UK. Developed by John Deere for the US agricultural market, QuadCool has proven outstanding within the UK waste & recycling sector, particularly in indoor waste facilities and environments with high levels of airborne debris. The system prevents the engine from overheating, reduces downtime and significantly reduces the frequency of cleaning routines.

High-Spec machines: Bell wheeled loaders are widely recognised as offering the highest "as standard" specification on the market. This means that Bell not only supplies all machines with its unique design elements but its machines are also factory-fitted with items that other manufacturers typically include only as optional extras. Examples include the reversing camera

and reverse radar detection system, embedded payload system and keyless start with lock-out codes for added security.

Bell Assure: This is a package of Bell's added-value offering, which have been formalised with measurable levels of service and guarantee and pulled together under a single umbrella. Bell Assure provides customers with a transparent menu of services far beyond the supply of yellow metal. The package includes flexible finance, multiple servicing and R&M packages, market-leading parts availability and service exchange programmes and the industry's most advanced offering in terms of satellite-based fleet management systems and plant security.

Neville Paynter, managing director of Bell UK, said: "Our inaugural RWM show last year proved to be a major success, with our loaders attracting huge interest from many potential customers who didn't know us previously. We're very excited to be returning this year."

"We've made enormous headway over the past 12 months in achieving sales through successful on-site demonstrations in the waste and recycling industry."

"Bell is confident that it supplies the very best wheeled loaders on the market, and we believe that message is getting through to our target customers."

Paynter said that the presence of QuadCool and the fact that Bell offers such a high "as standard" specification with its loaders, meant that other suppliers would have difficulties in matching the benchmark.

"We've redefined what customers expect of wheeled loaders," he said. "And when we make the purchasing process, maintenance and general after-sales support so customer-friendly with our very clear and comprehensive Bell Assure package, we believe we have genuinely raised the bar."

DRAMATICALLY REDUCE TROMMEL FINES

MAX XTRACT DENSITY SEPARATOR

- TROMMEL FINES IN, - SALEABLE PRODUCTS OUT!
- FERROUS AND NON FERROUS METAL RECOVERY
- DON'T SEND EXTRA WEIGHT TO LANDFILL - MAX XTRACT IT!



Worsley Plant Limited

Road Beta · Brooks Lane Ind. Est. · Middlewich · Cheshire CW10 0QF
T: 01606 835544 · info@digacrusher.com · www.digacrusher.com



The brand that defined performance now redefines it.

Introducing the WARMAN® WBH® Centrifugal Slurry Pump

Large capacity bearings for higher pressure loads.

New bearing frame design for truer alignment.

Grease or oil lubrication.

Optimised impeller and liner design for low turbulence operation and enhanced performance.



Single-point throatbush adjustment for rotational and axial movement while the pump is running.

Encapsulated rubber liners for high pressure operation.

WARMAN HI-SEAL® expeller for better sealing at higher inlet pressures.

Not since the introduction of the WARMAN® AH® pump more than half a century ago, has there been anything quite as pioneering.

The new WARMAN® WBH® centrifugal slurry pump improves on the legendary performance and reliability of its predecessor with more than a dozen new high-performance features for improved efficiency and wear life. With the arrival of the WBH® pump, a new standard has been set - again.

For more information on the new WBH® pump, please contact a Weir Minerals representative or visit www.weirminerals.com/WBH

Weir Minerals. Expertise where it counts.

Copyright ©2012, Weir Slurry Group, Inc. All rights reserved. WARMAN, WBH, AH and WARMAN HI-SEAL are registered trademarks of Weir Minerals Australia Ltd.



Excellent
Minerals
Solutions



RDS presents Loadmaster iX at RWM

RWM 2012 will see RDS Technology exhibiting the recently introduced Loadmaster iX range of on-board weighing instruments for wheeled loaders.

Loadmaster iX benefits from additional standard features including temperature compensation enhancing system performance particularly on machines with a wide variation in operating temperature and angle compensation providing an additional level of precision beneficial on most sites and not only those with obvious slopes.

In addition, the Loadmaster iX range offers effective management of weighing data. The Loadmaster 8000iX has an integral SD card port for the fast and efficient transfer of data between loader and weighbridge or office PC and enables pre-registered customer reference data to be uploaded directly to the instrument.

Also available is the trade-approvable Loadmaster 9000i. When fitted to a wheeled loading shovel, this on-board weighing scale effectively transforms the loader into a mobile weighbridge which conforms to MID Class Y(b) levels of accuracy.

The company has recently gained approval via the UK National Measurements Office to self-verify its instruments. Subject to formal training by RDS, this approval extends to all EU RDS distributors. This will dramatically speed up verification times and reduce end user costs.

Also on show at RWM will be the new WEIGHLOG a10 on-board weighing system. Incorporating a 4.3" colour, hi brightness resistive touchscreen display and additional physical keys, it provides a user-friendly on-board weighing system that can be used for truck loading or check weighing.

Suitable for use with up to 10 different attachments e.g. buckets or forks, the



system can be retrofitted onto telescopic handlers, skidsteers and compact loaders.

The system measures hydraulic pressure using up to 4 sensors at a certain position on the lifting cycle compensating for pressure changes in the system.

Enhanced stores capability comprising 30 products, 30 customers and up to 5 different recipes enable accurate record keeping and traceability.

The system provides communication and data storage via SD card reader and USB 2.0 host allowing quick, safe and efficient uploading and downloading of data.

Pakawaste at RWM 2012 - Stand number 18H09

Based in Preston, Lancashire, Pakawaste Ltd offers the largest range of waste handling equipment in the UK. Product range includes static & portable compactors, vertical & horizontal balers, Rotokrush compaction systems, waste transfer stations, industrial & office shredders, bins and bin equipment and a variety of other specialist waste handling systems.

In addition to the comprehensive range of standard waste handling products, Pakawaste's expert technical team can engineer bespoke and turnkey solutions to any waste problems which your company may be facing.

Pakawaste will once again be present at the RWM Exhibition at the NEC Birmingham between the 11th and 13th of September. This year Pakawaste will have an industrial shredder and a range of vertical balers on display. The Sales Team will be on hand to greet visitors, offer hospitality, give free advice and answer any enquiries regarding the range waste handling products. Information packs and support literature will also be made available to all visitors to the Pakawaste stand 18H09.

Pakawaste supplies a wide range of market sectors including food processors and manufacturers, hotels and restaurants, supermarkets, shopping centres, hospitals, the pharmaceutical industry, logistic companies, manufacturing industries, educational establishments, waste contractors and recycling companies to name but a few.

Pakawaste also has three sister companies. System Rental, which offers Pakawaste's premier waste handling equipment on rental or hire purchase agreements. Pakawaste Engineering Services Ltd which has one of the largest networks of strategically placed mobile service engineers which operate from fully equipped vehicles and can provide maintenance and service packages including third party coverage. Pakawaste Municipal Hire has a wide range of municipal vehicles available on flexible contract agreements.

Pakawaste has also been instrumental in several major individual projects including a development in Hong Kong. In total Pakawaste has supplied over 7,000 waste handling systems throughout the UK and worldwide.

www.pakawaste.co.uk
Email: sales@pakawaste.co.uk

 www.hub-4.com/directory/6570




PAKAWASTE
WASTE HANDLING SYSTEMS



Come and visit us on stand 18H09 at this year's Exhibition

Balers & Compactors ~ Rotokrush
Bins & Bin Equipment ~ Municipal Hire ~ Industrial Shredders
Waste Transfer Stations ~ Consumables & Accessories

Quality Assured | Service Guaranteed
WWW.PAKAWASTE.CO.UK
T: 01772 796688 | E: sales@pakawaste.co.uk



A drive towards competitive advantage

The modern production environment demands reliability and flexibility from plant equipment, allowing it to cope with the wide range of variables which may occur. This is essential if high productivity is to be sustained and profit levels to be maximised.

Rexroth puts you in touch with leading engineers in heavy systems engineering incorporating hydraulic drive systems and controls, servo drives and controls, pneumatics, linear and factory automation. The scope of Rexroth products for heavy engineering projects is unrivalled and thanks to its expertise in applications, provides a comprehensive service and unique solutions to all heavy industries.

Bosch Rexroth is renowned in heavy industries with its hydraulic systems technology and other products, enhanced now with unique Hägglunds direct hydraulic drives. This brings significant benefits such as starting with full load, low inertia fast response and accurately controlling torque to prevent overloads. This wide range of products and its formidable engineering knowledge, ensures the best drive and control solution for your plant.



▲ A typical drive consists of a Hägglunds motor which will provide the torque required. A power unit with a variable displacement pump/motor set and necessary tank, filters and instrumentation is also included in addition to a control and monitoring unit and the inter-piping. The arrangement is versatile and flexible which enables customisation to suit the exact requirements of the application and environment.



Hammermills and press/shears processing scrap metals

Metal recycling employs large heavy duty machinery for pressing, shearing, ripping up and fragmentising arisings which include cars, white goods and general scrap. Hydraulic components and systems manufactured by Rexroth provide an ideal, robust technology for this process, smoothly controlling these massive forces. Safety and reliability is assured through good professional design gained from many years of experience.



Large rotating drums for processing waste

Digester drums for waste biodegradation, autoclaves for processing waste with heat and pressurised steam or trommel screens to clean and sort materials. Direct hydraulic drive provides a solution for infinite variable speed whether driving with a pinion, a friction wheel or indeed on the central axis. Start smoothly fully loaded and the drives share the load inherently without complex synchronising electronics.



Shredders for domestic waste, tyres, cables, wood and green waste

Shredders need to shred effectively but to get the best life and reliability the forces need to be controlled. High speed drives with a large gearbox cannot provide this due to the high inertia and therefore they often get jammed or damaged causing production losses and high maintenance. Direct hydraulic drives have negligible inertia and full torque in both directions to give optimal cutting performance.

Materials handling experts commence latest MBT project

Saxlund, one of the UK's leaders in providing innovative solutions for bulk materials handling and biomass combustion, is currently working on a Gasifier project for New Earth Solutions. The project is designed to convert waste-derived biomass-rich fuel, consisting of materials otherwise destined for landfill, into hot gases to drive electricity-generating turbines.



The project will see the construction of a Gasifier at a mechanical and biological treatment (MBT) facility at Avonmouth, with Saxlund providing the materials handling and feed components including their Push Floor machines, specifically designed to function with non free-flowing and difficult to handle bulk solid materials.

Saxlund will control the total project operation of the materials handling component, including the design, drawing, project management, spare parts and administration with supervision from its own site supervisor and engineers, in addition to a prompt back-up service.

Saxlund is an acknowledged leader in the international bulk solids handling and storage industry and has an enviable track record in the handling of solid recovered fuel/specified recovered fuel (SRF) and refuse-derived fuel (RDF) both in the UK and worldwide, enabling the team to provide expert advice to New Earth Solutions for this project.

In addition to Avonmouth, Saxlund is also currently involved in the landmark biomass fuel handling project at Tullis Russell Papermakers in Scotland.



John Moore (Tractor Parts) Ltd - Serving the Recycling Industry

John Moore (Tractor Parts) Ltd has an enviable track record in the recycling industry built up over many years and will again be exhibiting at this year's RWM show.

Offering unrivalled service, the largest range of supplies and the very fastest delivery times, the company is supplier of choice for many in the recycling and waste management sector.

John Moore has a simple philosophy, always keeping their customers' spare parts costs down, whilst providing the best possible customer service.

The company also carries greatly increased stock levels of cutting edge section materials, abrasive resistant steel plates and non-OEM spares of the very highest quality, all of which are backed by a reputation which is second-to-none.

Always investing in the very latest technology, John Moore have recently invested in a state-of-the-art measuring capability, including FARO portable measuring arms, which makes measuring complex parts and component assemblies very straight forward. This technology is used by John Moore engineers to complete alignment, calibration, inspection, product development and reverse engineering tasks for customers.

Also available are hammers for shredding machines made from Boron up to a hardness of HB550, with or without carbide particle weld or solid carbide inserts.

Screens manufactured from hardox plate are also a popular choice for recycling companies from John Moore's inventory.

The company always carries greatly increased stock levels of non-OEM spares of the very highest quality for recycling applications.

With access to the largest supplies of non-OEM spare parts anywhere, recycling customers have no need to chase around for parts. One call to John Moore will solve the problem.

Ask John Moore to demonstrate the difference they can make to your recycling or waste management operations. An overview of their 40,000 plus product range is also available. Please contact the sales team on 01785 282705 or email: sales@johnmoore.co.uk



Impact Air Systems at RWM 2012 - making an impact

Impact Air Systems, the premium supplier of air separation systems for the recycling industry, are looking forward to pulling in the crowds at RWM this year.

Following the unprecedented success of last year, Impact has decided to showcase even more of their most popular solutions. New for this year is a model of the Filmvac, a plastic film extraction system which conveys film to a single screw compactor which improves the ability to bale the bags and film collected.

They are also showcasing their simple, but effective pneumatic transfer lines, which provide automatic conveyance of recyclables,

a more flexible and space saving alternative to traditional conveyors, ideal for transporting plastic containers from optical sorters or aluminum and steel cans from magnets and eddy current separation to storage bunkers prior to baling.

Impact's Airknife will also be on display for a wide range of material applications, significantly improving the performance of downstream processes by removing unwanted contaminants. Impact's high capacity drum airknife system is also proving to be a popular choice thanks to its advantageous separation efficiency and high hourly throughput rates. The zig-zag separation system will also be running for the second year to demonstrate how Impact can improve the value of recyclable materials such as glass and plastic by removing the dust, fibres and lights, although this year it has a money spinning twist! To keep abreast of Impact's latest developments, visit stand 18J35.

 www.hub-4.com/directory/6743

Glen Creston - Leaders in Size reduction

For preparation of larger laboratory samples or for light industrial applications, Glen Creston, (Endecotts sister company) offers a range of machines that can cope with high throughputs whilst still producing reasonable particle sizes.

From a Jaw crusher, for primary sample breakage prior to further processing, and a slow speed deagglomerator for de-lumping and coarse crushing to the McCrone Mill, which will grind to analytical fineness, these machines can cope with a wide range of materials from rocks to edible grains.

Glen Creston strives to improve their machines as well as manufacture and design bespoke special machines to customers' specific requirements for grinding and crushing applications.

These machines are suitable for processing a wide range of materials such as chemicals, minerals, pharmaceuticals, soil, cement, coal, aggregates, agricultural products, plus many more.

Several of the machines can be used either as stand-alone machines in the laboratory or incorporated into process lines for in-line processing of material.

Glen Creston will be presenting the following products at RMW Exhibition 2012:

Roller Crusher - Features include:

- Robust construction
- Minimal maintenance
- Single, double or multiple shaft versions
- Compact design allows retro-fitting into existing process lines.
- Parts easily removed for maintenance/repair

This rugged, slow-running mill is equipped with either a single or double roller shafts fitted with crushing cams. The cams rotate between crushing and stripping combs. Different shaped crushing elements are available depending on material.



Operating principle /construction - The crushing cams of wear-resistant steel are mounted on the roller shaft in staggered positions, accurately spaced so that they pass between the crushing and stripping combs which are mounted laterally on opposite sides of the inner housing. Both sets of combs are identical in design but have different functions.

Swing Hammer Mill - Features include:

- Large inlet hopper - ideal for bulky material
- Easily interchangeable screens
- 180° full-width screen area
- Choice of support stand height
- Bottom or blower discharge versions
- Easy access for cleaning
- Collection receptacle
- Time delay safety feature
- Choice of screens

Operating Principle

Material is fed into the inlet hopper where it falls into the grinding chamber. It is then ground by the action of freely rotating hardened steel hammers against a serrated face. The ground material then passes through a mild steel screen and into a receptacle.

Construction

Durable mill body constructed from cast iron with carbon steel inlet hopper and hardened steel hammers. Mounted on heavy steel motor rails complete with belt drive, guard, and starter. Hammers have four grinding edges which can be rotated in turn to give maximum life.

**For further details on Glen Creston products please contact-
enquiries@glencreston.com Tel: +44 (0) 208 545 9140
www.glencreston.com**

Turnkey Waste Systems

Bespoke Engineering Projects for the Waste Recycling Industries

DESIGN - MANUFACTURE - INSTALL - SUPPORT

MRFs, RDFs, Feeders, Trommels, Picking Stations - static & mobile, Screening, Air Separation Systems, Conveyor Systems, Waste Transfer Stations, C&D Waste Crushing & Washing.



Visit Our Stand:
17B39



DUO Manufacturing

Mendip Works, Leigh Road, Chantry, Nr. Frome, Somerset, BA11 3LR

T: 01373 836 451

F: 01373 836 879

E: sales@duopl.com

W: www.duopl.com

Which One's For You?



Eriez Eddy Current Separators are effective at removing non-ferrous metals in a wide variety of applications.

RevX LT & LT2 or RevX-E LT & LT2

Ideal for removal of large particles

RevX ST & ST2 or RevX-E ST & ST2

Ideal for removal of small particles, especially below 12mm

LC

Ideal for beverage can separation

1000's in operation globally

*Eriez service team are available for site visits to determine **which one's** for you!*

Concentric & Eccentric rotors kept in stock!!!



RevX RevX-E

Eriez Magnetics Europe Limited
info@eriezeurope.co.uk



Manufacturing Affiliates in Australia, Brazil, China, India, Japan, Mexico, South Africa & USA.

T: +44 (0)29 2086 8501
F: +44 (0)29 2085 1314

@eriezeurope
www.eriez.com



Bosch Rexroth at RWM 2012

Frankly it's hard to envisage a recycling industry without drives and controls and hydraulics in particular because all the major recycling equipment could not operate without it. Bosch Rexroth is the leading manufacturer of hydraulic products and systems used on mobile equipment, on presses and shears, on hammermills and shredders and on digesters and autoclaves & etc.

We will be exhibiting at RWM, NEC Birmingham, stand number 17E48, Hall 17 with relevant products and applications on show.

Bosch Rexroth is one of the world's leading specialists in the field of drive and control technologies. Under the brand name of Rexroth the company supplies more than 500,000 customers with tailored solutions for driving, controlling and moving. As 'The Drive & Control Company', Bosch Rexroth develops, produces and sells components and systems in more than 80 countries in the technology fields Electric Drives and Controls, Industrial Hydraulics, Mobile Hydraulics, Linear Technology, Assembly Technology and Pneumatics.

 www.hub-4.com/directory/372

Mogensen at RWM 2012: Stand Number 18NO9

The Mogensen stand at this year's RWM Show will feature a 1700mm x 1000mm wide trash screen, Type SRSL 1700/1000, a type of machine widely supplied to the recycling industry for scalping and "policing" duties such as the removal of bulky, low-density materials, e.g. paper, cardboard, plastic bags and fibrous matter, from heavier, smaller-size feed components.

The screen is driven by an Invicta rotary electric vibrator, Type BLz30-23/6, offering a maximum centrifugal force output of 2300kg. The vibrator may be rotated either forward or in reverse in order to vary the speed of travel of materials over the screen surface.

Mogensen is a leading manufacturer of vibratory equipment for the solids and bulk handling industries, and has more than 40 years of experience in the field both in the UK and abroad. The recycling and waste management sector has featured prominently in the company's activities for several years. Both standard and custom-designed machines have been delivered to solve the wide variety of problems encountered in the industry.



Mogensen prides itself on its willingness and ability to provide bespoke solutions to individual processing problems. Its screens, feeders and conveyors are in widespread use in the recycling industry: they are handling various materials including used tyres and scrap rubber; miscellaneous scrap glass; wood waste; bone meal and other biomass materials; compost; aerosol cans, other scrap metal; recycled concrete and aggregates; plaster board and mixed textile and plastic waste.

 www.hub-4.com/directory/583



DEMOLITION COMPANY LTD

“Kent Demolition is a full service demolition company that applies mechanical methods for safe, rapid and cost effective demolition for all types of brick, concrete and steel structures.”

- 
- **Dismantling**
 - **Salvage, recycling and disposal**
 - **Site clearance**
 - **Site rehabilitation by conventional mechanical methods**
 - **Site survey - developing recommendations for a project that is customised to your needs**
 - **Job pricing - competitive quotes with no hidden extras**
 - **Demolition - excellent reputation for safety, dependability and quality from selective demolition to entire buildings**

MGI House, Monson Road, Tunbridge Wells, Kent TN1 1LH 07778 377 919
www.kentdemo.co.uk
enquiries@kentdemo.co.uk

Ellen Padgett
Communications Manager
epadgett@kentdemo.co.uk





KENT

DEMOLITION COMPANY LTD

Concrete Crushing,
Soil, Sand & Screening



On Site Recycling



MGI House, Monson Road
Tunbridge Wells
Kent. TN1 1LH

07778 377 919

www.kentdemo.co.uk

MAKE MASSIVE COST SAVINGS WHEN YOU RECYCLE ON-SITE

In order to reduce construction cost, Kent Demolition recycle existing materials on-site. This can involve the crushing of concrete slabs, footings, brick and blockwork to produce materials for oversites and piling mats etc. and the screening of soil to produce the top soil.

Kent Demolition operates specialised machinery to carry out these operations safely and efficiently. Our experienced staff in waste and environmental policies will offer advice regarding the recycling of 'waste' on-site.

The option of on-site recycling can offer significant cost savings on your next project.



Crushing hardcore creates extensive reduction in cost on skip hire, landfill charges and prevents having to purchase new aggregates for piling mats etc.

Our crushers can separate ferrous metals while crushing:

- Bricks
- Tiles
- Concrete
- Paving Slabs
- Kerb Stones
- Rocks & Stones
- Cold tarmac



PLANT HIRE



4x4 DUMPERS



DRIVE THROUGH WHEEL WASHING

SOIL SCREENING



DEMOLITION COMPANY LTD

Provides turnkey services to a prestigious customer base

Mentor to showcase waste specific training courses at RWM

Mentor are returning to the NEC this September for Resource and Waste Management event, RWM, with a new range of courses for the waste industry.

EU Skills PLUS

Mentor are working alongside Energy and Utility Skills, the Sector Skills Council for the gas, power, waste management and water industries to ensure that the waste industry has access to a full range of sector specific courses. Following consultation with Mentor and FCC Environment, EU Skills recently relaunched the scheme which, supported by the Recognition of Learning Programme (RLP), ensures that operatives receive relevant training to the highest standard and fit for purpose. The scheme will also help companies keep track of operator skills as all delegates are registered under the programme and secure records kept up to date and accessible 24/7 from anywhere simply by logging into the website.

Waste specific courses

Mentor already deliver training to some of the largest companies in the utilities and waste recycling sectors. This experience, alongside consultation with industry representatives and course mapping to the National Occupation Standards (NOS), has enabled the following operator courses to be recognised under the PLUS umbrella:

- 360° Excavators - Wheeled or Tracked
- Materials Handler
- Agricultural Tractor with Trailer / Bowsters
- Articulated / Rigid Dumper
- Backhoe Loaders
- Compactors
- Dozers
- Mini Diggers
- Skid Steer Loaders
- Telescopic Handlers
- Wheeled / Tracked Loaders



The new courses will be showcased at RWM 2012; visit stand 20D38, RWM, Birmingham NEC, from the 11th-13th September 2012 for a viewing or to discuss any training requirements. For further information on training under the Plant for Utilities Scheme, please see the team at the show or visit www.mentortraining.co.uk

Mentor will be exhibiting alongside QCF provider Serac UK; for more information on the waste-specific qualifications they can provide, visit www.serac.co.uk



Freightliner Heavy Haul Leading Specialist for Waste Haulage by Rail

Specialising in bespoke rail solutions for the movement of bulk freight, demonstrating market leading flexibility, punctuality and exceptional service delivery.

Utilising our fleet of flatbed wagons we transport containerised waste to landfill sites and also move substantial waste spoil tonnages using bulk box wagons.

Speak to us about your waste haulage needs:

E: enquiries@freightliner.co.uk

T: +44 (0)7734 496 662

Freightliner
www.freightliner.co.uk

WASTE PROCESSING AT ITS BEST



Worsley Plant Ltd

Road Beta · Brooks Lane Industrial Estate · Middlewich · Cheshire CW10 0QF
01606 835544 · info@worsleyplant.co.uk · www.worsleyplant.co.uk



REMU

WASTE SYSTEMS

Blue Group at RWM 2012

Waste processing, recycling and materials handling equipment distributor, Blue Group, is exhibiting at the RWM Show again on their usual stand number OA 160, located just outside the main hall.

Blue Group is a total solutions provider, offering the waste management industry a wide range of waste systems, materials handlers, shredding, composting, screening, crushing, recycling and conveying equipment for the efficient and cost-effective processing of all waste streams. The Group has also developed and invested in after sales product support with an impressive off-the-shelf stock-holding, increased under-cover storage capacity and an automated system that is widely considered to be the ultimate in state-of-the-art computer controlled parts storage, selection and picking.

Blue's portfolio of distributorships includes TEREX Fuchs materials handlers, Doppstadt shredders and chippers, Kiverco recycling plants and waste processing equipment, TEREX Powerscreen crushing, screening, washing and recycling equipment, Telestack static, mobile and telescopic conveyors and CRS flip flow screens. In the domestic and commercial solid waste fields, Blue Group is also a distributor for the Cesaro Tiger pre-AD separator and the Marathon ranges of two-ram and channel balers.

UK Show Debuts for TEREX Fuchs: Two specialist, long-reach materials handlers distributed by Blue Fuchs are on show for the first time in the UK.

The new MHL350E offers excellent reach, height and lifting capacities throughout the duties chart, together with unrivalled fuel efficiency from the Tier 4 compliant diesel engine. The newly designed cab is an ideal work station, with even greater comfort for maximum productivity and minimum operator fatigue for efficient materials handling.

The new MHL820 is electrically powered and ideal for under-cover waste processing plants, with zero exhaust emissions and virtually silent operation.

Both models feature four hydraulic outriggers to provide optimum stability for static loading work. The infinitely variable hydraulically height adjustable cabs give operators a raised line-of-sight, which is a distinct advantage for processor feeding and contributes to operational safety with enhanced visibility during the working process.



The Doppstadt DW-3060 K Bio Power Shredder:

The highly mobile, crawler-mounted Doppstadt DW-3060 K Bio Power heavy-duty shredder is capable of handling large bulk timber and woodwaste, mixed construction waste and industrial refuse. This single shaft shredder has numerous beneficial features, which include: Optimum tooth arrangement on the roller, reversible fan wheel, modified hopper shape for easy loading, electrically controlled roller reversing and a large return conveyor. Additionally, the DW-3060 K is equipped with an overband magnet at the front end, which safely removes tramp metals from the incoming raw waste. The DW-3060 K Bio is equipped with a 430HP Mercedes-Benz diesel engine which has power to spare for heavy duty applications and processing multiple raw waste material types, producing recyclables to exacting specifications and enabling significant volume reductions - all with a reliability, productivity and fuel economy which belie its size. An additional benefit is the shredder's mobility, which allows operators to easily and quickly relocate the machine to the waste material for treatment throughout the site, rather than the costly and time-consuming process of taking the material to a static machine.

UK Debut for the Kiverco ASU Fines Clean-up System: The latest development from Kiverco, for which Blue Group is a main distributor, is the mobile Kiverco ASU. Utilizing air-separation and air recirculation technology, the Kiverco ASU is capable of separating clean fines from aggregates, biomass, building and demolition debris and other commingled wastestreams.





Clean, high quality fines can be produced for soil enhancement, further composting and biomass fuel while, at the same time, reducing tip-to-landfill volume and producing additional saleable products through efficient separation.

The Kiverco ASU is compact, self-contained and easily assimilated into an existing recycling plant to add an extra dimension to its processing capabilities.

CRS "Flip Flow" Technology: Blue Group is experiencing considerable success with the CRS KF 44-18 Kinetic Flow Screen for which they are an appointed distributor. "Flip flow" technology allows waste management and recycling specialists to extract even greater volumes of recyclable fines material from waste streams, after primary screening, for blending or further separation as single size saleable material. A Flip Flow screenbox is displayed to illustrate this innovative technology.

Maximising recovery of valuable useable material, the Kinetic Flow Screen has a range of applications, including: Fine mixed C&D Waste (0-80mm); mixed organic waste; damp and sticky materials such as powders, soils and sand; shredded mulch or organic materials.

The Cesaro Tiger Food Waste De-packaging Machine: Designed for the effective separation and processing of organic waste from selective collection or expired packaged foodstuff, the Cesaro Tiger can form an integral part of an anaerobic digestion, composting or organic waste treatment plant. Plastic and processed packaging is separated, with wet or dry systems producing the organic fraction for secondary processing.

The Marathon Gemini Xtreme Baler: Blue Group is the appointed distributor for the successful range of horizontal 2-ram and channel balers in England, Scotland and Wales. Featured on the stand at this year's RWM Show is the Gemini Xtreme, displayed complete with conveyor. This is a mid-capacity, closed-end, multi-material baler with a vertical tie system, which is ideal for baling light alloys, paper, plastics, PET and similar waste stream materials, producing a standard 762mm X 1219mm X 1524mm bale with an average cycle time of 34 seconds. The full penetration ram ensures optimum compaction and full bale ejection. The programmable controller allows both manual and semi-automatic operation and the twin cross cylinders have power to spare from the 20HP motor. Wire guides ensure quick and efficient bale tying and the guide design allows easy clean-out. The Gemini Xtreme also features a reversible and adjustable bolt-on shear blade, is also available with an hydraulic bale door release system and can be installed with an optional above floor or pit conveyor as required.

After Sales Product Support: Blue Spares - the essential provider of genuine OEM spare parts for the main distributorships of Blue Group - is well represented on the stand at RWM. With established spares holdings exceeding £1.5 Million and approximately 13,000 line items available off the shelf at any one time, Blue Spares is dedicated to ensure that their product support is second-to-none. The company has developed a "24/7" network spares service for UK customers and provides a genuine 24 hours parts turnaround.



www.hub-4.com/directory/2260



Master Magnets Look To Increase Global Sales Success at RWM

The European debt crisis has had a detrimental effect on the manufacturing industry recently. Having affected the majority of Europe's countries, the financial downturn has lead to many companies having to put their projects on hold.

Despite Europe's troubles, Master Magnet's equipment sales have continued to thrive with an ever-increasing amount of Magnetic Separators and Metal Detection equipment being sold to Asia, the Middle-east and Australasia.

Recent international projects have included the manufacture of four Eddy Current Separators for an organic fertiliser process in Thailand. Each of the 1250mm wide separators are to be used for the separation of non-ferrous metals such as aluminium from the fertiliser. In addition to the ECS units, the company also asked Master Magnets to supply four Overband Magnets for the continuous removal of any ferrous metals.

Other notable orders include some large Overbands that have been supplied for coal processing applications in Indonesia as well as a large quantity of manual-clean Suspension Magnets that were supplied for a diverse range of applications in Dubai.

Sales Manager, Phil Tree writes: As an active international sales operation, our overseas Agents have collectively helped us to significantly increase our export turnover



outside Europe. In the interest of increasing our export turnover even further, we will continue being proactive by promoting our company's brand and its product range, putting more emphasis on exhibitions and international sales visits in particular.

As part of this plan, Master Magnets will be returning to the Recycling and Waste Management exhibition this September. After the success of RWM 2011, the company has opted to have a larger stand for this year's show and will again be showcasing a range of its equipment on stand 19V15. Located along the front aisle, near the main entrance, Mastermag will be demonstrating an Eddy Current Separator system as well as a Self-Cleaning Overband Magnet.

Mastermag have high hopes for this year's exhibition, especially after the successful combination of RWM and CIWM, which resulted in a much larger number of enquiries last year. Having just posted some very impressive figures reflecting significant growth over the past twelve months, Master Magnets are planning further expansion for the coming year. Notably the development of the Metal Detection brand and the investment in an Apprenticeship programme as well as recruitment of more experienced staff to cope with the ever increasing demand for quality MasterMag equipment.

 www.hub-4.com/directory/541

Visit us @



Stand: 18M69-L68



Presona®

The Right Baler For Your Needs



At Presona we pride ourselves on picking the right baling solution for your needs, big or small

The Presona UK team are always Professional and happy to help you

Our Presona trained service engineers cover all of the UK (excluding Northern Ireland)

Apply for a service contract for your new or existing Presona machine for continuous smooth operation



Contact Our Sales or Service Department

Tel: 01278 444527

www.presona.co.uk

@PresonaUK



MASTER MAGNETS LTD

Incorporating Integrated Recycling Systems Ltd
& Metal Detection Ltd

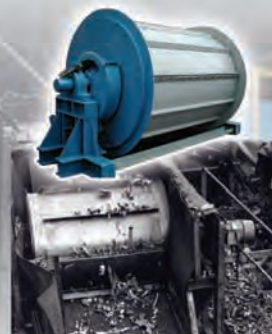
Exhibiting at RWM 2012 on Stand 19V15



Eddy Current Separators



Overband Magnets



Drum Magnets



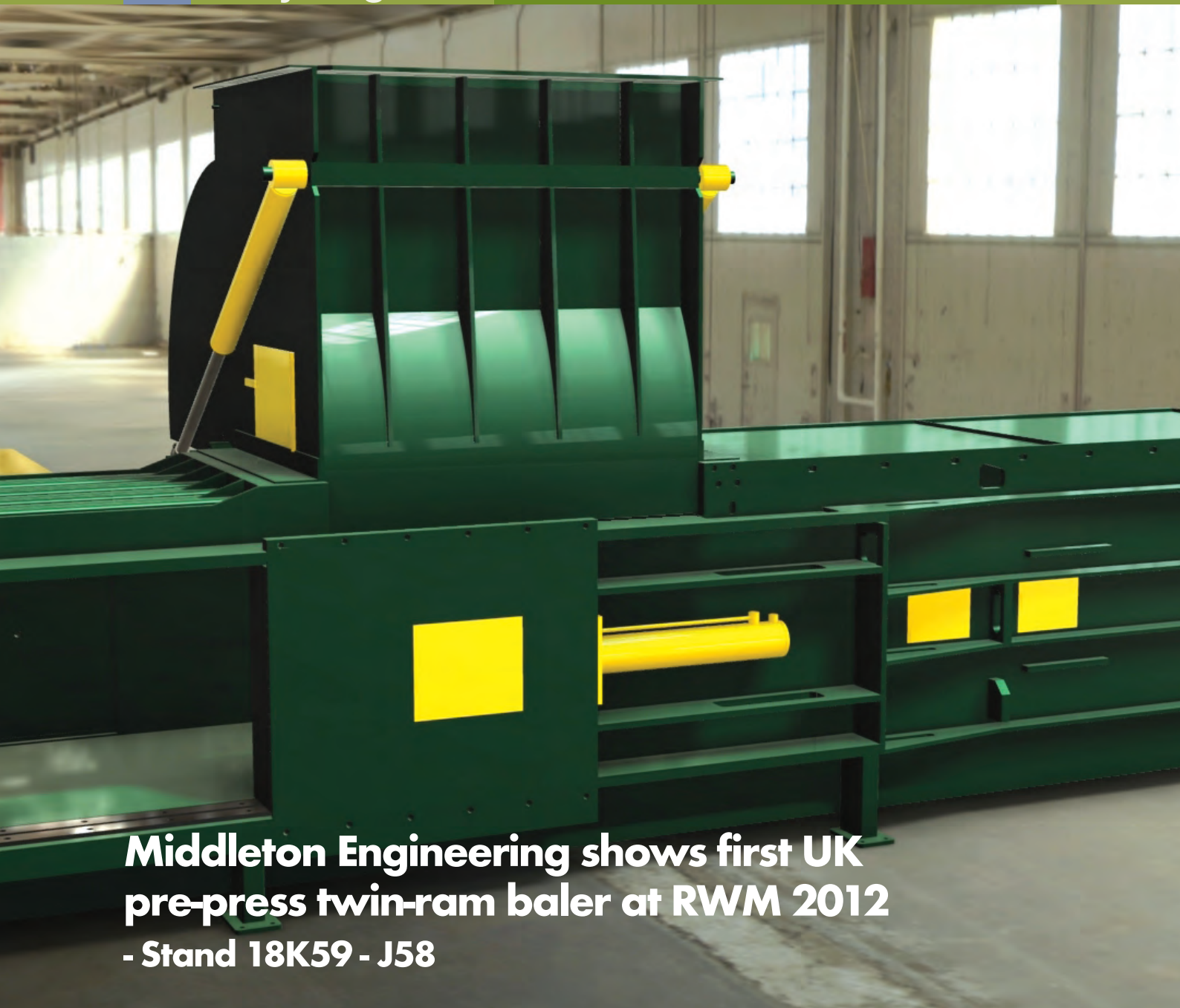
Metal Detectors

Master Magnets Ltd, Burnt Meadow Road, North Moons Moat, Redditch, Worcestershire B98 9PA

Tel: +44 (0)1527 65858 Fax: +44 (0)1527 65868 Email: info@mastermagnets.co.uk

Web: www.mastermagnets.com

We look forward to welcoming both new and existing customers at the RWM 2012 Exhibition and hope to see you there!



Middleton Engineering shows first UK pre-press twin-ram baler at RWM 2012

- Stand 18K59 - J58

Improved bale size resolves issues for containerised transportation of RDF waste.

Leading baler and recycling equipment engineers Middleton Engineering will be showing the UK's first pre-press, twin-ram baler at 2012 RWM. For waste management companies and councils dealing with municipal waste, and exporters requiring optimised container weight, this baler has been engineered to withstand a press force of over 200 tonnes producing very dense bales and building in capacity for upgrading.

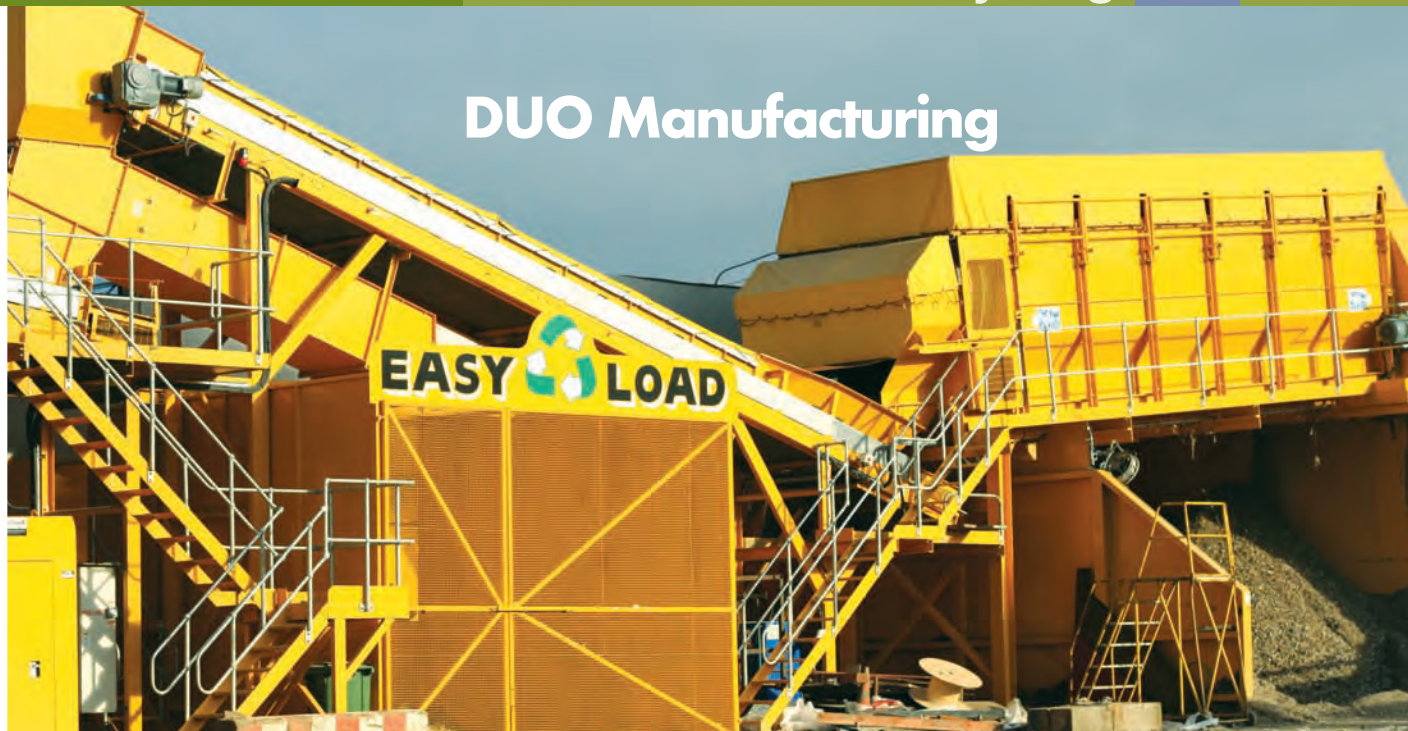
The British-made baler's prepress technology combines the strength of the twin ram with the speed of a channel baler for faster throughput and will be used on plastics, cardboard, paper, cans, hard plastics, some WEEE waste together with aluminium extrusions.

Called the Middleton ME2R150P, it is also the first baler to combine both wire and plastic tie capabilities in the same machine, making it very quick to switch from different waste streams such as cardboard, which requires wire ties, to RDF which uses plastic.

Middletons believe they are the first European manufacturer to produce a square section bale of 1050 x 1050 x 1400mm, designed to cut loading and handling times by a third. The optimised bale size can be more easily loaded and any wrapping protected to provide operators with a cleaner, more hygienic solution, while maximising the payload.

Middletons also manufacture pre-press channel, shear and closed end balers, full MRF systems, conveyors and shredders as well as selling and refurbishing all brands of machines.

Demonstrating that British design and manufacturing can hold its own, the company has also successfully exported products to Ireland, Norway, Denmark and even Malta. Scandinavia's largest recycling company, Ragn-Sells, took delivery of its second Middleton baler earlier this year and Middletons has just won a further two Scandinavian orders.



DUO Manufacturing

Following a successful 12 months since the last RWM show DUO Manufacturing will again be attending the event. Since the last show DUO Manufacturing have been involved in several projects relating to the recycling and waste management industry and are looking forward to discussing the solutions they have provided with visitors to their stand.

Dudley Lloyd - Director, commented "RWM has always proved a successful event for us in the past and we're looking forward to this year's event. We've had a busy year since the last show so the opportunity to catch up with so many of our customers in one place, as well as networking with new contacts, is not one to be missed. I'm looking forward to discussing the benefits that our latest installations have delivered as we've undertaken some interesting projects since last year's show, some of which are the types of recycling facilities we have traditional installed, others more specialist."

 www.hub-4.com/directory/928



Max Solutions Show New Edge Equipment

Max Solutions and manufacturer Edge Innovation will again be co-exhibiting at RWM. With Max Solutions representing Edge in the UK the two companies will be show placing two new products at the event.

The first machine being the new Edge Shredder which, due to Edge's on-going product development, now features a larger shredding chamber; the increased shaft size allows for greater throughput.

The second machine is Edge's all new mobile trommel. The heavy duty trommel combines the latest technology to reduce fuel usage and operating costs. This includes a load sensing drum, low revving engine with auto stop and a remote control for all the main functions so that the machine can be set up by a single operator and managed from the loader.

Commenting on the equipment and the upcoming show, John McGuinness - Max Solutions - commented "Working with Edge enables us to offer equipment which is comparable to the biggest brand names in the market but with lower operating costs and a quicker return on investment. The show is an opportunity for us to show more people the equipment on offer and add to our demonstration schedule.

 www.hub-4.com/directory/13820



Eriez Showcase Latest Magnetic Separators for the Recycling Industry at RWM 2012

Eriez Magnetics Europe Ltd is pleased to announce their presence at RWM 2012 (Stand 19P19-N18) where they will showcase the latest in Magnetic Separation technology for the Recycling industry.

Eriez this year have expanded the size of the stand to accommodate their growing portfolio of equipment. They will use RWM to launch their new range of Electro and Permanent Magnetic Scrap Drums for the automatic separation of heavy ferrous during scrap metal processing such as meatballs or armature assemblies. This will also be the first time that a Traction Plate™ Drum Wrap will be on display in Europe which when

added to an Eriez Scrap Drum significantly improves cleaning action by gripping ferrous, allowing it to agitate on the face of the Drum and releasing fluff and dirt.

Also making an appearance will be the ProSort II Airless Metal Sorter, the FinesSort combined with a RevX-E ST2 Eddy Current Separator for the removal of fine ferrous and non-ferrous metals, a self-cleaning Suspended Permanent Magnet for the automatic removal of ferrous metals and the latest in Metal Detection Technology.

Eriez have a large presence in recycling and waste industries and have experienced technicians on hand to discuss the best methods of separation for any application. Customers are welcome to take samples of material to the show so that tests can be performed on the stand. After all, seeing is believing!

 www.hub-4.com/directory/280

Kingfisher solutions are widely used in MRF (Materials Recycling Facilities) sites to separate fibrous material from glass and other recycled materials, for more information visit us at RWM 2012 stand number N38 Hall 19.



Kingfisher demonstrates reduced maintenance costs and improved operational availability using latest wear protection techniques at RWM

Having saved primary manufacturing industries millions of pounds of expenditure through the introduction of bespoke materials handling solutions used to handle abrasive and hard to handle minerals and fuels, total solution provider Kingfisher Industrial are exhibiting at this year's RWM 2012.

Having followed the trail of materials through to the recycling industry, they have built up a successful portfolio of applications where the alternative prior to their interaction was costly replacement or time consuming repair costs of MRF, glass, wood and aggregate recycling plants. They will be exhibiting a range materials and equipment used to extend the service life of recycling plant by meeting key industry demands for increased throughput and operational uptime, while reducing maintenance and running costs.

As the processing of mixed recycling materials becomes more efficient and mechanised, the ability to maximise earning potentials depends on efficient continual operation of all process critical plant and equipment. Kingfisher has spent over 30 years providing independent advice, engineered solutions and installation of wear protection solutions to suit this equipment, providing up to 20 years of guaranteed service-free use.

Already a leading supplier in the power generation and bulk solids handling sectors, Kingfisher is seeing an increasing demand for its knowhow from the waste and recycling sector, hence the reason for exhibiting at this year's show. This is mainly due to industries target of reducing their operations carbon footprint, as manufacturing industry now utilises a far greater proportion of recycled material within their manufacturing process thus reducing expensive mineral extractive costs and can likewise reduce their fossil fuel costs through the combustion of secondary refuse fuels supplied by the municipal waste processing companies.

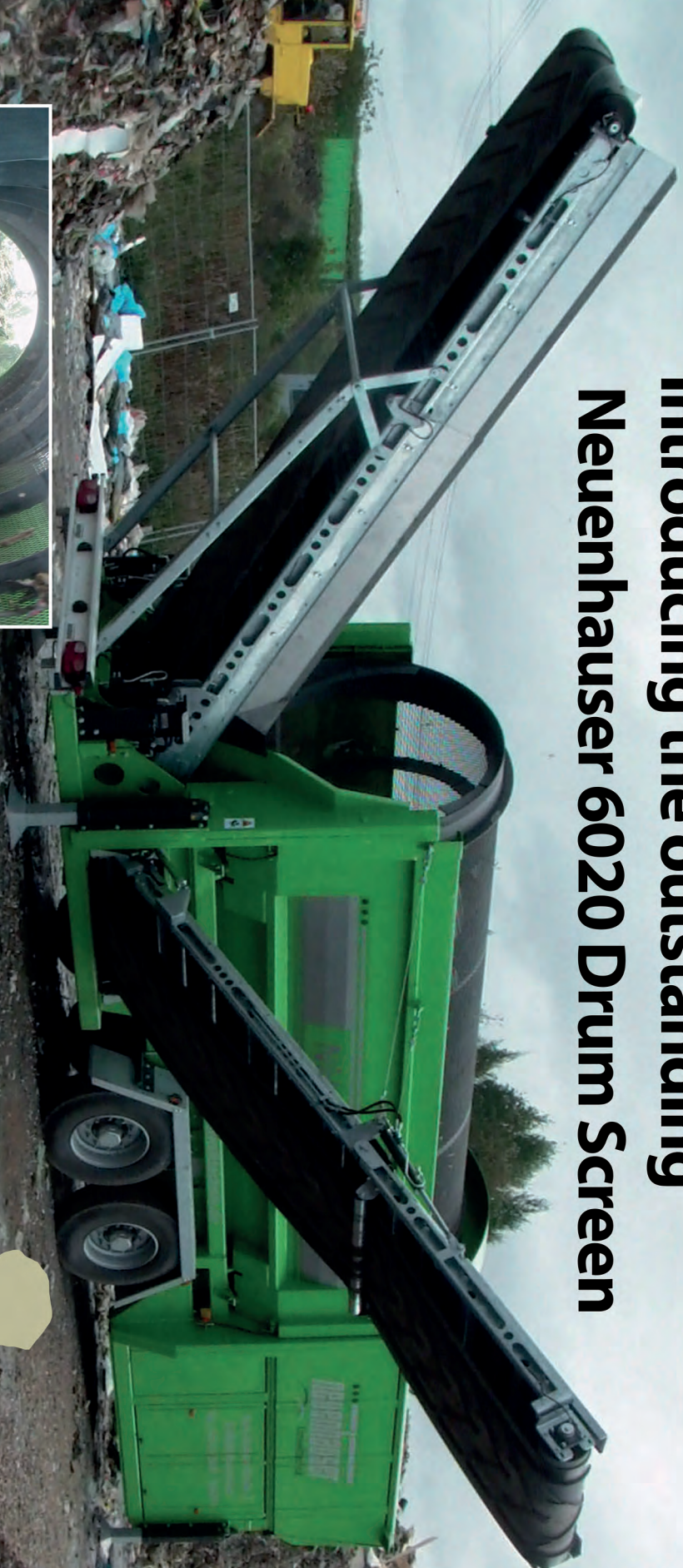
As a whole plethora of materials are now being recycled: including glass, ash, metals, plastics, wood, paper and even stone, these materials are extremely abrasive when transferred; especially so when they are conveyed in greater volumes and in larger automated operations where the process involves mechanical and pneumatic movement. If adequate wear protection is not provided, the inevitable result will be high levels of plant degradation that can cause premature failure such as perforations in pipework systems, transfer chutes, material separators, cyclones, fans, filters, crushing and shredding equipment resulting in spillages that can be difficult and costly to clean-up and if not controlled can result in breach of environmental legislation.

The RWM exhibition is being held at the NEC, Birmingham, UK from 11-13th September 2012. It is running alongside both The Energy Event and The Renewables Event so visit Kingfisher in Hall 19 on stand N38 to see how these issues can be solved and how quickly your ROI can be achieved on both replacement and new process plant and equipment. For complimentary tickets contact Kingfisher directly at www.kingfisher-industrial.com



www.hub-4.com/directory/12641

Introducing the outstanding Neuenhauser 6020 Drum Screen



- Diesel / Electric drive
- Electric plug and play
- Extremely fuel efficient (6L/hr)
- Drum directly interchangeable with a DOPPSTADT 620

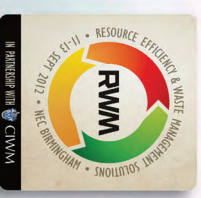
**RIVERSIDE
MACHINERY**

New & Used Machinery / Spare Parts / Servicing & Refurbishment

THINK **GREEN**, THINK

neuenhauser

SOLE UK AGENT



Visit us on
Stand 20L05

Riverside Machinery Ltd | 26 Greenwood Glen | Belfast | BT8 7WE
Tel: +44 (0) 800 689 9024 | Fax: +44 (0) 471 5099 | www.riverside-machinery.com