

www.hub-4.com

Product focus

**Mobile & Static
Crushing, Screening
& Screen Media**



**CMB provides a new
standard in complete
solutions.....**



CMB International Ltd

Tel: 01530 563600 Email: sales@cmb.uk.com www.cmb.uk.com

July 2012

For more information or to book an advertisement in the
next feature please contact: Tel: 0845 680 0024

The CMB Rockmonster & New Rockstar cone crusher

CMB International are passionate about crushed rock as the success of our clients depends upon it. With equal focus on rock crushers, screens and crushed rock, CMB prides itself on providing effective and efficient production solutions with minimum downtime. We understand that these key components are vital to our client's production capability, therefore we produce machines that are purpose built, durable and user friendly, whilst crucially providing the desired output of a high quality product. If you have a tough application requirement, CMB will provide heavy duty crushers and screens, for a safe and affordable investment.



CMB are service focused and provide clients with first class after sales care and continued support. Buying a CMB cone crusher, jaw crusher, screen, feeder and any other product in the CMB range, is also a sound investment into a wealth of knowledge and expertise that will continue to enhance overall performance and productivity.

Latest Addition

The RS225 Rockstar 1350 Cone is the latest addition to the CMB range that also includes the RS150 Rockstar 1000 Cone.

The CMB RS225 Rockstar is a modern, state-of-the-art, all roller bearing cone crusher. The crusher features hydraulic adjustment which enables the operator to rapidly change the discharge setting if necessary during crushing.

The machines hydraulics also incorporate tramp metal release, automatic reset and an unblocking feature that will clear the crushing chamber quickly and effectively.

Re-metalling is carried out with the crushing head in situ. The short shaft configuration, which requires no top bearing, enables all major components to be removed from above and demands minimal headroom for efficient installation and maintenance.

The proven all roller bearing design features lower power consumption, longevity, easy spares availability and the need for a more compact lubrication system.

Product features:

- High outputs of excellent product shape
- Unattended operation
- Fast and simple adjustment
- Minimal maintenance
- Large unobstructed feed opening
- Takes unscreened feed

The CMB Rockmonster

The CMB Rockmonster 1100 x 800 is the jaw crusher that Chris Hall, our Technical Director, always wanted to design, and is a superb piece of equipment in a static and/or mobile application.

The CMB Rockmonster 1100 x 800 jaw crusher features stepless mechanical/hydraulic adjustment enabling the operator to quickly change settings. There are no shims to change or bolts to re-tighten which, streamlines the adjustment procedure. Welding has been kept to a minimum in the design and the massive front wall and cross beam are special heat treated castings that are bolted and pinned into position, therefore CMB have avoided the substantial stress concentrations often found in welded components.

Product features:

- High outputs of excellent product shape
- Unattended operation
- Fast and simple adjustment
- Minimal maintenance
- Large unobstructed feed opening

CMB also provide a comprehensive range of vibrating screens, Horizontal, Inclined and Dewatering Screens and Feeders that are often custom made to best fit your application. CMB specialise in replacing old screens and feeders whilst utilising the existing structure to minimise replacement costs and CMB Screens accommodate whatever screening media is specified by the client, wire cloth, polyurethane, rubber punch plate, etc.

As screen designers and manufacturers, CMB use a proven methodology to ensure correct screen sizing as outlined by the VSMA, Vibrating Screen Manufacturers Association, to determine the correct screen size for any given duty.



The unique design of a CMB screen mechanism maintains that the centre line of the bearing is in direct alignment with that of the screen sideplate, ensuring that all of the exciter forces are sent directly where they should be.

In addition, all CMB mechanisms are selected on the basis of providing an L10 bearing life of 20,000 hrs, most of CMB's competitors only work on 10,000 hrs. From our experience, doubling the potential life of the bearings has proven invaluable to customers, who appreciate this substantial extra life, and they significantly benefit from the increased production time between bearing changes due to the CMB mechanisms.

Neuenhauser provides screening solution for damp materials following the wettest June in history

Following a dismal start to the summer in which June saw the highest levels of rainfall ever recorded, many companies involved in recycling green waste, aggregates, soils and fly ash are now facing an uphill battle to screen their sodden material using conventional trommel screens.

Riverside Machinery, the UK's sole distributor of Neuenhauser equipment, is able to offer a screening solution that processes damp material thanks to the German manufacturer's range of star screens. These machines utilise a deck of rotating stars to screen a variety of material including green waste, trommel fines, soils and fly ash.



Unlike some conventional screening systems the star screen is not subject to blockages or reduced output when processing wet material therefore remaining effective regardless of the British Weather.

The Neuenhauser Star screen is available as a road-going trailer unit, independently mobile tracked unit, or fixed unit and can screen high volumes of material to sizes between 10mm and 80mm.

Commenting on the Neuenhauser Starscreener's capability, Riverside Machinery's sales director John O'Neill said 'The past few months of heavy rainfall have caused a backlog of material for many material processors whose current equipment is unable to screen damp or wet material. As a result, companies that are experiencing high demand for their end-products or have restrictions on storage space may benefit from the Neuenhauser Starscreener'.

Riverside Machinery is also able to offer several tracked and wheeled Star Screens for hire. The full range of Neuenhauser machinery is also available for demonstration. To discuss your screening requirements in more detail please contact Riverside Machinery on +44 800 689 9024 or sales@riverside-machinery.com

 www.hub-4.com/directory/12459



Dealers Required Worldwide. Contact sales@portafill.com



7000IC Crusher



5000CT Direct Feed



4000W Trommel



3000ST Screen



2000CT Scalper



Conveyor Range



Wash Systems



Portafill International Ltd
29 Farriter Road, Dungannon, Co Tyrone, N Ireland BT70 1TL
TEL +44 (0)28 8776 9467 WEB www.portafill.com

INTRODUCING THE **NEW** 684 INCLINED SCREEN!!

The Terex Finlay 684 is a compact easily transportable machine that offers operators rapid set up and tear down times. The **NEW** screenbox features three large 4.3m x 1.7m (14' x 5' 7") inclined screens giving a large screening area of 236ft² to provide efficient screening and high capacity. The screenbox features quick wedge tensioning, access holes and bottom deck hydraulic tensioning system to reduce time required for mesh changes. All four discharge conveyors are adjustable and hydraulically fold for transport. The fourth product 'oversize plus' conveyor has variable tilt and side slew to accurately discharge material for recirculation and stockpiling.

Features:

- ▶ **NEW** triple deck 4.3m x 1.7m (14' x 5' 7") screen with full catwalk access.
- ▶ The fourth (oversize plus) conveyor provides variable tilt and slide slew capability to accurately discharge materials for recirculation to crushers or for stockpiling.
- ▶ Maximum utilisation of three 4.3m x 1.7m (14' x 5' 7") decks provides ultra-efficient screening capabilities even at small aggregate sizes.
- ▶ A combination of quick wedge tensioning, convenient access holes and hydraulic tensioning on the bottom deck ensure mesh set up and change out times are kept to an absolute minimum.




www.terexfinlay.com



TEREX® | FINLAY

WORKS FOR YOU.™

Terex® Finlay, Drumquin Road, Omagh, Co. Tyrone, Northern Ireland. BT78 5PN
Head Office T: +44 (0) 28 82 418 700 F: +44 (0) 28 82 244 294 E: sales@terexfinlay.com
All rights are reserved. Terex® is a registered trademark of Terex Corporation in the USA and many other countries. Copyright 2012 Terex GB Ltd.



ALLU Processing Bucket

The ALLU Processing Bucket is now a familiar sight in many recycling yards, pipeline sites and Remediation projects across the globe as well as on hundreds of different applications from crushing glass or plaster board to screening/shredding animal feed. The ALLU range of processing buckets includes stabilisation buckets, Screener Crushers and fine screening units, which have the advantage over traditional screening in that they can process a wide range of difficult materials. The newest incarnation of ALLU bucket is the D-Series. With the benefit of over 25 years experience and a high standard of engineering that is clear to see, Finlay Hire Ltd are keen to demonstrate on customers sites by supplying bucket, base machine and driver to customers sites in England and Wales.

Recycling; Break the trend

It is feasible for a company receiving excavated trench waste to process 100% of incoming material with the Allu Bucket to go straight out of the door as backfill. Due to the Allu's Screening/Crushing process, much of the material is crushed and broken down leaving oversize material that is often a minimal amount of clean stone.

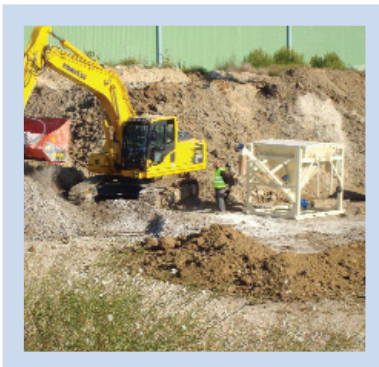
With typical weather in the UK being wet and clay being common in most excavated material, most recycling facilities can expect material coming through their gates to be problematic with traditional methods. A common practice is for material to be put over a deck screen numerous times. A costly process which often leaves large stockpiles of 'reject' material. Chris Bell of Finlay Hire Ltd said: "I'd urge anyone with that growing stockpile of problematic material, such as clay and hard-core that has been over a screen ten times with no results or left to dry for weeks on end to consider the ALLU range". Existing systems can be complimented by an Allu unit to ensure maximum capability.

HBM Reinstatement

ALLU has been a pioneering manufacturer in the process of creating HBM materials for reinstatement, helping many utilities companies reach their 'zero to landfill' goals. Whether mixing manually using the ALLU Bucket, with the ALLU Dosing System or the highly accurate SureMix SM50, a recycling process can be set up close to any project where excavated material is brought for treatment, reloaded into the same grab truck and reinstated back into the trench. David MacLynn of ALLU said "It has tremendous potential, particularly for utility contractors, and there are substantial savings to be made as it eradicates landfill, transportation and other associated costs. HBMs are tried and tested".

Pipeline, In Situ

With the associated costs of supplying virgin aggregate as pipe bedding along the entire length of a pipe laying project, the benefits of creating this product in-situ using the ALLU system is clear. Being arguably the principal use of ALLU buckets, this application is common across the world with ALLU being the original brand and the manufacturer of choice. Where the excavated material is unsuitable for use as pipeline bedding, the ALLU can be utilised to process waste material from recycling yards to achieve suitable pipe surround as



an alternative to expensive virgin aggregate. The Allu is also used to process the backfill above the pipe surround to meet compaction requirements that could otherwise necessitate virgin aggregate. The possible savings in this application by using an Allu Processing Bucket are immense.

Remediation and stabilisation

The ALLU Stabilisation Bucket, is the ideal tool in the application of ground remediation, allowing for the aerating, mixing and addition of compounds (lime, binder, etc.) eliminating the need for static machinery and combining loading and movement activities with remediation. Using ALLU in bioremediation over traditional methods yields better oxygenation in soil, better biological product and increased quality bacteria life. Contaminated ground by its nature is likely to contain a varying level and type of contamination. ALLU units can process material from oily sludge to thick clays with the ability to screen out and tip potentially damaging debris. ALLU Stabilisation Buckets have been used with great success

on project such as the Kingsnorth power station project which involved the excavation of ground, heavily contaminated with bitumen, often still in the barrels. ALLU often remains the only solution for many remediation projects.

The SureMix has the ability to add controlled amounts of lime/cement/Bentonite/PFA into material as well as water and bioremediation agents with production rates in excess of 120 tph. The SureMix SM50 ensures highly accurate and consistently mixed material, creating a detailed summary of its activity. The continuous mixer chamber was designed to break up and mix material thoroughly after initial dosing to ensure a granular product with minimal 'balling'.

Endless applications

With hundreds of possible applications The Finlay Group are keen that customers with problematic material streams take advantage of their ability to demonstrate a wide range of ALLU variants on site. For more information on applications visit finlayscreen.blogspot.co.uk or contact The Finlay Group to arrange a demonstration.

For enquiries about the sale (new, used and ex-demo) or hire of Allu products contact the Finlay Group.

Screening...

behind every passion
there is a driving force
– this is ours **WS85**

We aim to offer the most successful screens. Whilst constantly searching for new and better solutions we do not follow short-lived trends, but build on our experience.



TEMA Isenmann Ltd
4 Great Central Way Woodford Halse
Northamptonshire NN11 3PZ
TEL 01327 264227 FAX 01327 264228
email: screendecks@tema.co.uk
www.temaisenmann.co.uk

Customers world wide enjoying world class products

CRUSHER SPARES LTD

keeping kue-kens crushing

Tel: 0044 1443 228329
sales@crushersparesltd.co.uk



Crusher Spares Ltd are a family run business based in South Wales . Exporting worldwide daily of high quality spares to suit Kue Ken, Brown Lenox, Extec, Pegson plus many more ...

Refurbishments undertaken a wide range of used equipment for sale plus brand new grizzly feeders made to order!

CRUSHER SPARES LTD
Unit 6, East Side
Cambrian Industrial Estate
Coed Cae Lane, Pontyclun
South Wales UK CF72 9EW

Tel: 0044 1443 228329
Fax: 0044 1443 224277
Mobile: 0044 7817326277 - 24hrs
Email: sales@crushersparesltd.co.uk

www.crushersparesltd.co.uk



Powerscreen Launches Warrior 1400X

Powerscreen, one of the world's leading providers of mobile crushing and screening equipment, launches the new Warrior 1400X screen.

Damian Power, Powerscreen Global Product Director said: "The new Powerscreen® Warrior 1400X offers improved performance, lower operating costs, and easier serviceability while building on the reliable foundation of our class-leading Warrior 1400 scalper."

The 1400X has been designed with economy in mind, with reduced engine running speed and enhanced hydraulics, the 1400X offers a reduction in fuel consumption of up to 15% in comparison to its predecessor. This can translate into a substantial financial saving for customers over the lifetime of the machine.

Improved versatility and design specifications are other key achievements of the Warrior 1400X, with the screening angle range increasing by 50% from 4 degrees to 6 degrees. Standard stockpiling capacity on all conveyors has increased by 25 to 30%. With the chassis riser option and the telescopic side conveyor option, the fines and mid-grade stockpiling capacity is increased to more than double that of a standard Warrior 1400.

Time required for set-up and shutdown is faster than the previous model, which will be of particular benefit to contractors. Serviceability features include a class leading screen box raise function and the unique ability to raise the collection conveyor. Optimal chute design in conjunction with the new feeder under-tray slide-out feature will minimise any potential spillage and reduce any harmful material build-up around the machine.

The Warrior 1400X now boasts improved mobility with a two speed tracking system as standard. The high speed mode is further enhanced with automatic engine speed ramp-up making the 1400X the fastest tracked machine in its range.

The Warrior 1400X can be fitted with either a Tier 3 / Stage 3A Caterpillar C4.4 ATAAC - 4 cylinder diesel engine, or a Tier 4i / Stage 3B Caterpillar C4.4 - 4 cylinder diesel engine developing 82kW (110hp) at 1800 rpm.

The Warrior 1400X was exhibited at the Hillhead exhibition June 2012. For more information on Powerscreen® crushing, screening and washing products or Customer Support, please contact your local dealer. Details can be found at www.powerscreen.com

 www.hub-4.com/directory/679

MOGENSEN

Providing Materials Handling Solutions
for over 50 years



Feeders | Sizers | Spreaders | Separators
Conveyors | Screens | Compactors






Tel +44 (0) 1476 566301 Fax +44 (0) 1476 590145
Email sales@mogensen.co.uk Web www.mogensen.co.uk
A Division of Grantham Engineering (Established 1946)
Mogensen Hartnoll Road, Grantham, Lincolnshire, England NG31 7SL





GRANTHAM ENGINEERING

Anaconda launches larger screen at Hillhead

Anaconda Equipment International, the Northern Ireland based manufacturer of compact screening and conveying equipment, has just announced the launch of the DF512 Tracked Screener at the Hillhead exhibition in Buxton, England (June '12). The DF512 is the 'big brother' of the highly acclaimed DF410 model and is a significant move away from the compact range of screens on offer from Anaconda up until now.

The DF512 is considered more 'mainstream' screening as the capability of the machine is up to 350tph. Quarry operators and other users find that this size of machine works perfectly for a lot of the medium sized crushers on the market so the two can work in tandem comfortably. The unit is suitable for applications such as scalping or screening quarry rock, mining minerals, recycling construction and demolition (C&D) waste, soil or compost.



A large yellow Anaconda DF512 mobile screen and conveyor is shown in operation. It is a tracked machine with a large hopper at the front and a conveyor belt leading to a double-deck screen. The screen is discharging material into a large pile of gravel. The machine is yellow with black tracks and has 'ANACONDA' and 'DF512 SCREEN' written on its side.

When asked why the move from compact screens to this larger model, Sales and Marketing Director Con Gallagher highlighted the input from the dealer network around the world was key: *"The DF512 is certainly a move up the scale in terms of machine size but we have a team of highly experienced design and production engineers who have been in this game for anything up to 25 years. The success of our other products has given the market confidence in what we can design, build and export, and, coupled with the high level of sales and service back up from our network of dealers around the globe, end users are requesting larger machines from Anaconda. This feedback from dealers has been instrumental in our R&D plans."*

The DF512 has a 12' x 5' (3.66M x 1.52M) double deck screenbox, a CAT 4.4 water cooled engine (100HP), belt or apron feeder option, three integral stockpiling conveyors and a crawler track chassis for ease of movement around/off site. The unit has hydraulic folding hopper sides as standard, hydraulic screen angle adjustable from 15-19°, hydraulic screenbox raise/lower for ease of mesh change and wired remote as standard (radio remote optional). The machine weighs in at a robust 27 ton with apron feeder.

Using Hillhead as the launch pad for this machine was part of the overall planning process and according to Mr Gallagher, interest in the product has certainly been very encouraging:

"We have been very pleased at the level of interest shown in the DF512 at Hillhead. It is a great show for this type of product and the visitors to our stand were very complimentary about the quality of all the products on show. The FTR150 feeder conveyor generated lots of interest as it is also relatively new to market having been launched at the Intermat show in France back in April, but the DF512 seems to have been a move in the right direction for us as we have taken some orders and have a lot of very good enquiries to follow up on. Overall, we couldn't have asked for a better response."

Anaconda Equipment distributes all products via a dealer network around the world. With exception of the DF512 screen, Anaconda's range of screens and conveyors have been designed to fold, track and offload in 40' containers with little or no breakdown. This concept not only saves substantial sums of money on shipping but also means that the products are commissioned and working within 20 minutes of landing on site.

If you would like more information on the new DF512 or any of the mobile screens and conveyors offered by Anaconda Equipment then please get in touch with your local dealer representative. To find your local dealer, please visit the Anaconda Equipment website www.anacondaequipment.com

High Capacity

Quality End
Product Shape

Reduced
maintenance
down time

HP3

Cone Crusher



HP3 creative performance

Technologically unique, the new HP3 cone crusher offers unprecedented performance. With an output and quality of finished products markedly superior to other machines in its class, it also simplifies the flow and treatment of materials. Its safe and easy maintenance ensures maximum reliability.

HP3, the ultimate cone crusher.



Metso Minerals (UK) Ltd, tel +44(0)1788 532100, fax +44 (0)1788 547883 - www.metso.com

 **metso**
Expect results



£5 Million factory expansion for Harpscreen (GB) Ltd

Harpscreen (GB) Ltd, part of the Quarrytech Ltd group of companies, the largest manufacturer in the UK of screening media, have been successful in their bid for funding from the £2.4bn Regional Growth Fund.

This funding will assist Harpscreen with its £5 million factory expansion plan at their site in Haydock, Merseyside, which coupled with investment in new machinery, will increase their manufacturing capacity within the UK by 100% therefore safeguarding existing jobs and creating up to 70 new employment opportunities within the area.

Harpscreen have gained an enviable reputation over the years amongst quarry managers, aggregate companies as well as machine manufacturers for their range of quality woven wire screens. Their renowned

standing within the industry has been built on offering a fast turnaround service coupled with product knowledge second to none!

This level of service has become even more crucial because of the migration by many large companies away from self operated and managed plant to sub contracted crushing and screening. This results in the sub contractors needing to respond quickly to their customer's needs.

Harpscreen are now gaining the same reputation throughout the recycling industry and with recent proposed increases in landfill tax the level of service they offer will be of even more importance.

As well as their wide range of high tensile/stainless steel wire screening products, Harpscreen also offer punched plate (flat or rolled) and various conveyor rollers. They also offer a range of rubber mats, finger and grizzly systems and other screening/conveyor accessories.

Should you require any further information on any of the products Harpscreen has to offer please do not hesitate to call us on 0845 2020 300 or email salesuk@harpscreen.com us with your enquiry.

 www.hub-4.com/directory/1879

CRUSHING AND SCREENING EFFICIENCY



GipoCOMBI RC130FDR





www.agg-pro.com



150 Jaw Crusher



AGGREGATE PROCESSING & RECYCLING LTD - HEDGING LANE, WILNECOTE, TAMWORTH . B77 5EX
 TEL +44 (0)1827 280139 FAX +44 (0)1827 287770 Email: info@agg-pro.com www.agg-pro.com

Hillhead 2012 the best ever for Sandvik!

Sandvik Construction enjoyed their best Hillhead ever with nearly 3,000 visitors coming to the stand over the three days the show was held. The visitors came from all corners of the globe in order to see a broad selection of Sandvik's world renowned product lines. Additionally the visitors were able to view three brand new products that were receiving their global launch, as well as discuss their aftermarket requirements, watch live machinery demonstrations, and meet key people from within the Sandvik Construction organization.

Hillhead is now seen as the perfect place for Sandvik to show, and vitally to demonstrate, members of its total solutions product range, as it has undoubtedly become the world's leading quarry, recycling and construction exhibition. Nearly 20,000 visitors took advantage of the excellent British weather on the first two days of the show to come to Hillhead, and even torrential rain did not stop many coming on the third day. Thus, Sandvik were able to show the following products to a huge number of people:

- UJ440i - heavy range jaw crusher
- QE440 - tracked scalper / screener
- QA331 - tracked 3 way split screener
- QE140 - highly productive screener / scalper
- QJ341 - best-selling tracked jaw crusher
- QJ241 - compact tracked jaw crusher
- QH331 - new tracked cone crusher
- DI550 - tracked drill rig
- WR media - new, and revolutionary screening media
- CI511 - the brand new horizontal shaft impact crusher
- A selection breakers under the Rammer brand

One of the things which makes Hillhead almost unique amongst trade shows of its ilk is the fact that visitors are not only able to just see static displays of equipment, but also watch live machinery demonstrations. This year was no different, and Sandvik took full advantage of the possibilities presented by demonstrating the following equipment:



- QI240 - new tracked impact crusher with Pri-Sec (primary & secondary) technology
- QJ341 feeding a QH440 - tracked cone crusher
- The QH440 then fed the crushed material for sizing to a QA450 - triple deck tracked doublescreen

Hugh Glandfield, Vice President UK & Ireland, Sandvik Construction, said of the show: "Hillhead has always been the perfect opportunity for us to show case our product lines and meet our customers, but this year we were truly staggered by vast number of potential new customers, and general visitors, who came to the Sandvik stand." Of the Sandvik equipment being shown at Hillhead Hugh explained - "We launched three new products this year (QH331, WR screening media and the CI511), as well as the latest upgrades from our tracked jaw crusher range (QJ241 & QJ341) that now come with many improvements, but vitally a hydraulic operation for the main conveyor. However, the real star of the show was the stand itself; it seemed to act like a magnet to visitors to the exhibition."

Sandvik Construction would like to express a big "thank-you" to the organizers of Hillhead 2012, the members of the press for showing so much interest in Sandvik, but most of all to their customers whether they are new, old, lapsed or those that are yet to be. Without them Hillhead 2012 would not have been the success it was, and all at Sandvik Construction look forward to seeing everyone in 2014.

High Efficiency Siebtechnik Screens



- Screening machines (Linear, circular & elliptical motion designs, Banana screens)
- Liwell Flip Flow Screening Machines
- Centrifuges
- Jigs



- Sampling systems
- Laboratory Equipment
- Crushing and Milling Equipment
- Wire Mesh Conveyor Belts
- Sieve Bends
- Fluid Bed Dryers



TEMA (MACHINERY) LTD

3, Great Central Way,
Woodford Halse, Northants NN11 3PZ
Tel: 01327 262600 Fax: 01327 262571
Email: sales@tema.co.uk

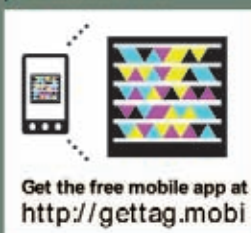


www.tema.co.uk

**Equipment for compost screening, waste recycling,
construction, demolition, road maintenance,
landscaping and wood recycling.**



Watch a video demo
of a Starscreener on
your mobile now!



THINK **GREEN**, THINK
neuenhauser
SOLE UK DEALER

**RIVERSIDE
MACHINERY**

New & Used Machinery / Spare Parts / Servicing & Refurbishment

Riverside Machinery Ltd | 26 Greenwood Glen | Belfast | BT8 7WE
Tel: +44 (0) 800 689 9024 | Fax: +44 (0) 800 471 5099 | www.riverside-machinery.com

New Metso Cone crusher now one step nearer the “Holy Grail” for cones.

(Large reduction, superior quality and high product yield)



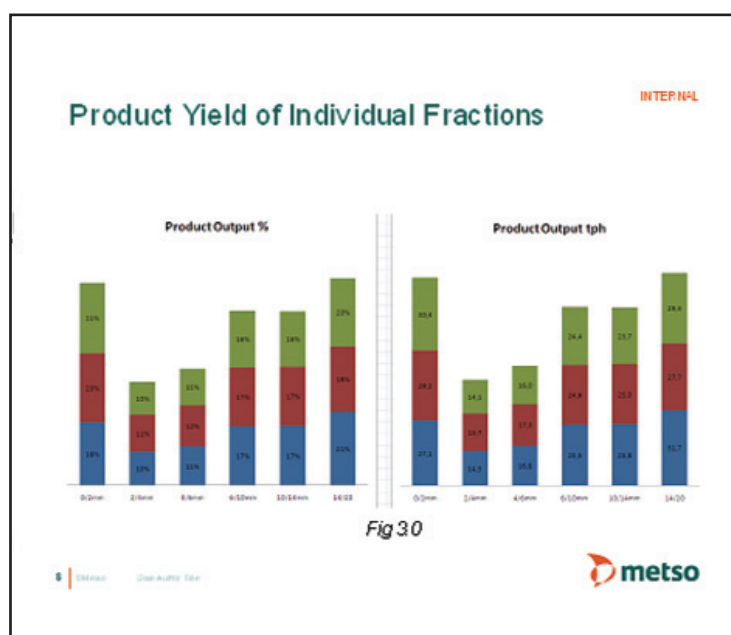
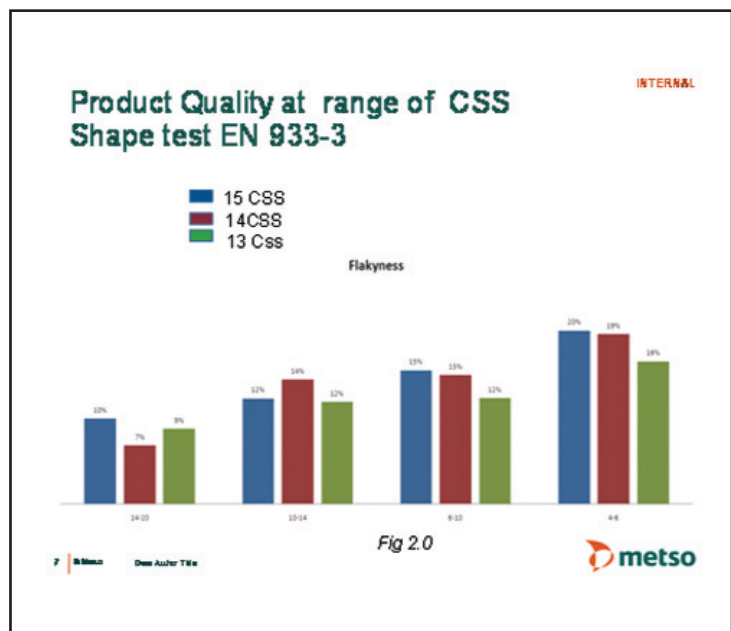
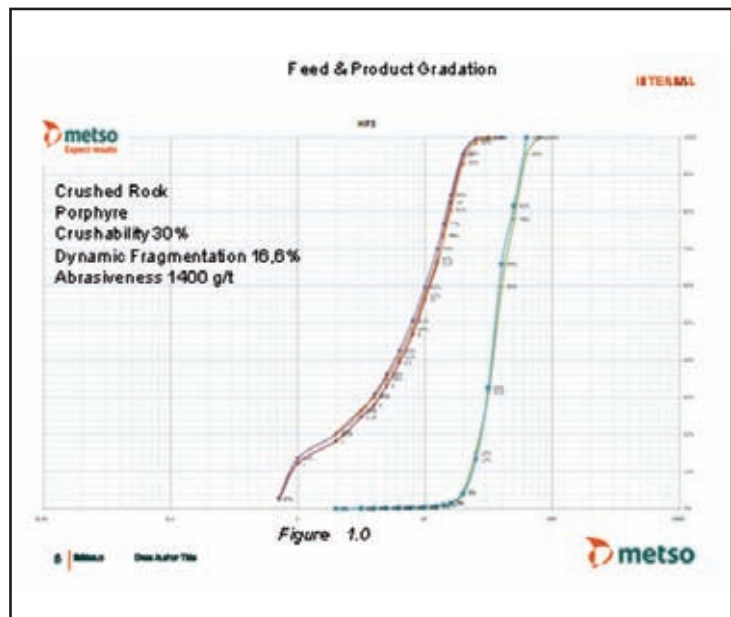
Hillhead 2012 has recently provided the ideal launch pad for the new Metso HP3 high density crusher. However today's

visitor to the UK quarrying exhibition needs more than a change of model designation and good paint finish to get enthusiastic about what the new design of crusher can achieve. This was never more relevant than at this year's exhibition, 3 days at Buxton where the interest in the new HP3 was sustained by visitors asking “what does it do differently and why?”.

However any scepticism was soon answered by the results achieved from a production test from the 1st HP3 installed in a hard rock quarry last year. The benefit was best illustrated by the results of a challenging cone crusher application conducted with one of the first HP3 production machine last year, as part of the new product development validation process.

The gradation opposite top in Fig1 confirms the feed gradation (70 x 20mm nominal feed) and the product gradations from the HP3 set at 15 14 & 13mm CSS. It can be seen that this application with a reduction ratio of 3.12 gains no benefit from fine material ie no 15 x 6mm material in the feed fraction.

The most impressive results of the tests we feel is the shape quality (Flake test) and % yield of 10mm and 6mm fractions, as can be seen from the analysis graphs as illustrated in Fig 2 and 3 respectively, all from first pass through the HP3 crusher. A 15% flake in the 10mm product with a yield of 24% along with 20% flake on the 6mm product would please many quarry managers today. It would be safe to say every hard quarry in the UK would benefit from this impressive performance in their product portfolio and overall cost of processing.

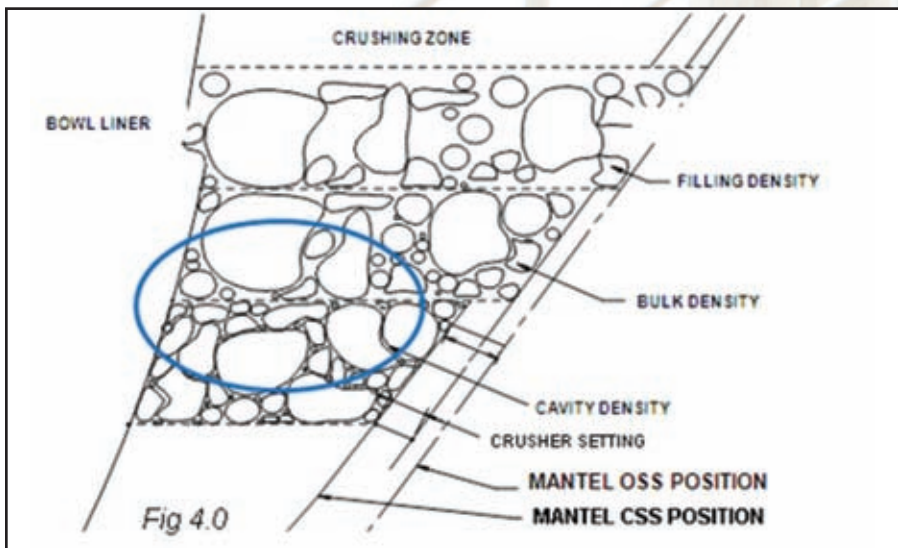


To answer the next logical question how are these results achieved?

Answer: Design of the kinematics of the crusher within Metso. This is a function of head angle, speed, eccentric stroke and chamber profile, now better understood as a result of technological advances of how crushing chambers perform.

In practise the density in the chamber has been increased such that weak stone will find it difficult to survive whereby the chamber retains it choke conditions right down to the CSS.

Figure 4.0 shows the effect of the large eccentric stroke used in the transition for open side to closed side in each gyration cycle of the crusher.



From the outside there are only small areas that have obviously changed, however internally the need for higher crushing forces have imposed many areas of change to the frame and hydraulic system which are now enhanced with thicker section and higher hydraulic clamping force.

The design of crusher is further enhanced with the IC7000 advanced crusher setting control to ensure the crusher is not asked to operated above its safe limits and at the same time maintains a consistent product and a user friendly interface used to "key in" crusher setting.

For sure this new design of high density cone crusher has moved the "horizon" for hard rock aggregate production and is already generating significant interest.

**Mesto UK contact A Orr at Metso UK
Rugby 01788 532100.**



Rockster Recycler teams up with Plant Supply Ltd

South Wales based equipment supplier, Plant Supply Ltd are pleased to announce they have become the sole UK dealer for the range of mobile crushing and screening equipment from Austrian manufacturer, Kormann Rockster Recycler GMBH.

Rockster manufacture a range of fully hydraulic tracked jaw and impact crushers covering a wide variety of applications. Featuring fuel efficient Caterpillar diesel engines the range of four models offer output capacities ranging from the 100 tonnes per hour R700S up to the 39 tonne, 350 tonnes per hour, R1200.

Manufactured alongside the range of crushing equipment at a state of the art facility in Ennsdorf, Austria, Rockster also build a range of screening equipment.

Some of the unique features that Rockster crushers bring to the UK market are:

Hydrostatic Drive

The conventional clutch is replaced with a hydrostatic drive system, which enables a specific adjustment of the crusher speed in line with the feed material and the precise control of the fines percentage. Hydraulically adjustable gap widths also allow individual definition of the final particle size and this is essential in many applications.

Patented Rockster Duplex-exchange-System

Rockster has developed the unique and patented Duplex-system which enables the customer to operate the same machine with different crusher units. The hydrostatic drive system facilitates clockwise or counter clockwise rotation of the crusher it is possible to install both crushing units on one and the same chassis and are changeable from impact to jaw crusher - and vice versa - within a few hours.

Crush and Screen with one machine

The compact vibrating screen RS83/94 is the perfect combination for the compact crusher and can be mounted on the main discharge conveyor belt of the crusher and is driven by an additional hydraulic service on the crushing unit. The screener removes any oversize, and gives customers two alternatives oversize can be discharged via a side belt or - in the case of a closed circuit - sent back for a second crushing process. Particularly noteworthy is the pivoting Return conveyor, which is unique in its design on compact crushing plants. Through the rotating mechanism it is useable either as return conveyor for a closed circuit or as an additional stockpile conveyor with a discharge height of 3.4 m

Plant Supply Ltd commented on the announcement; "We are very pleased to be able to offer our existing and new customers such a high quality range of crushing and screening equipment from such a well established European manufacturer. The level of detail and build quality along with Rockster's commitment to providing a fuel efficient, high capacity range of equipment is an exciting prospect for our company to be able to offer to the recycling and crushing operators of the UK.



www.hub-4.com/directory/13787